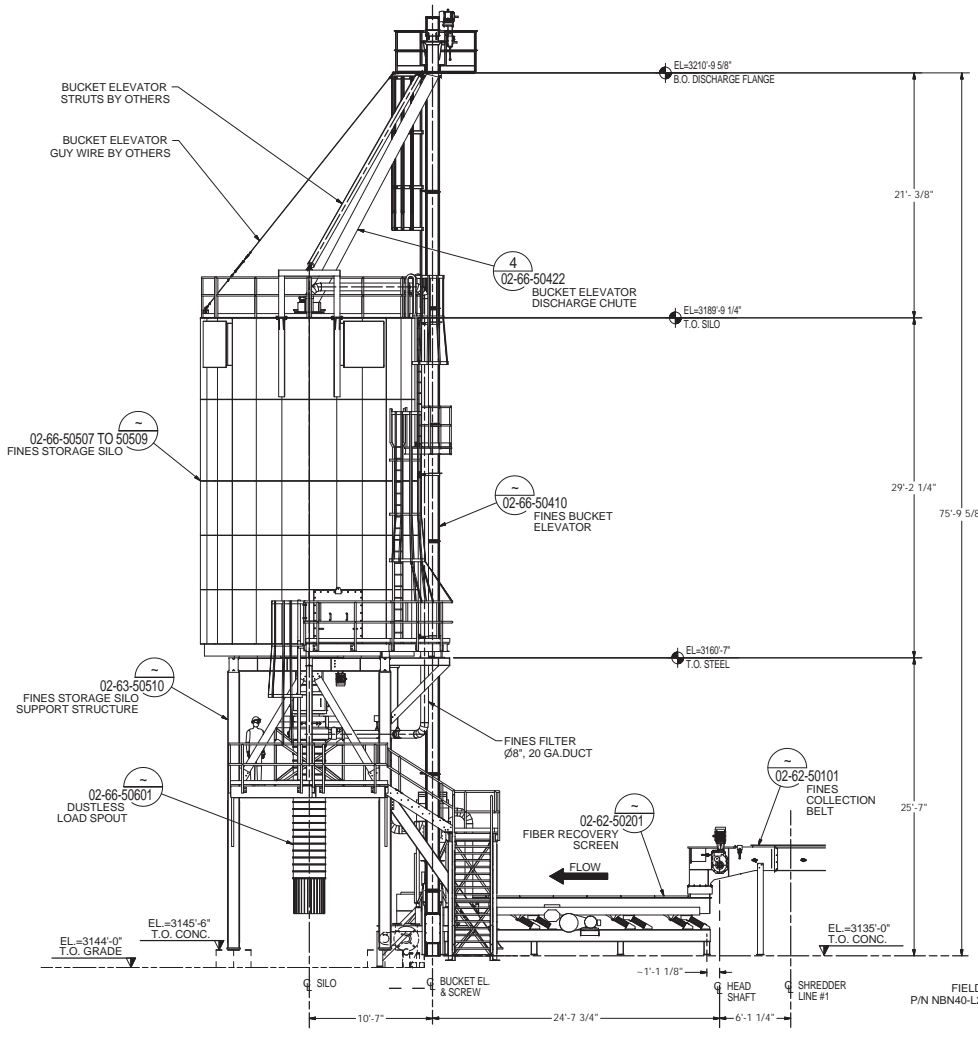
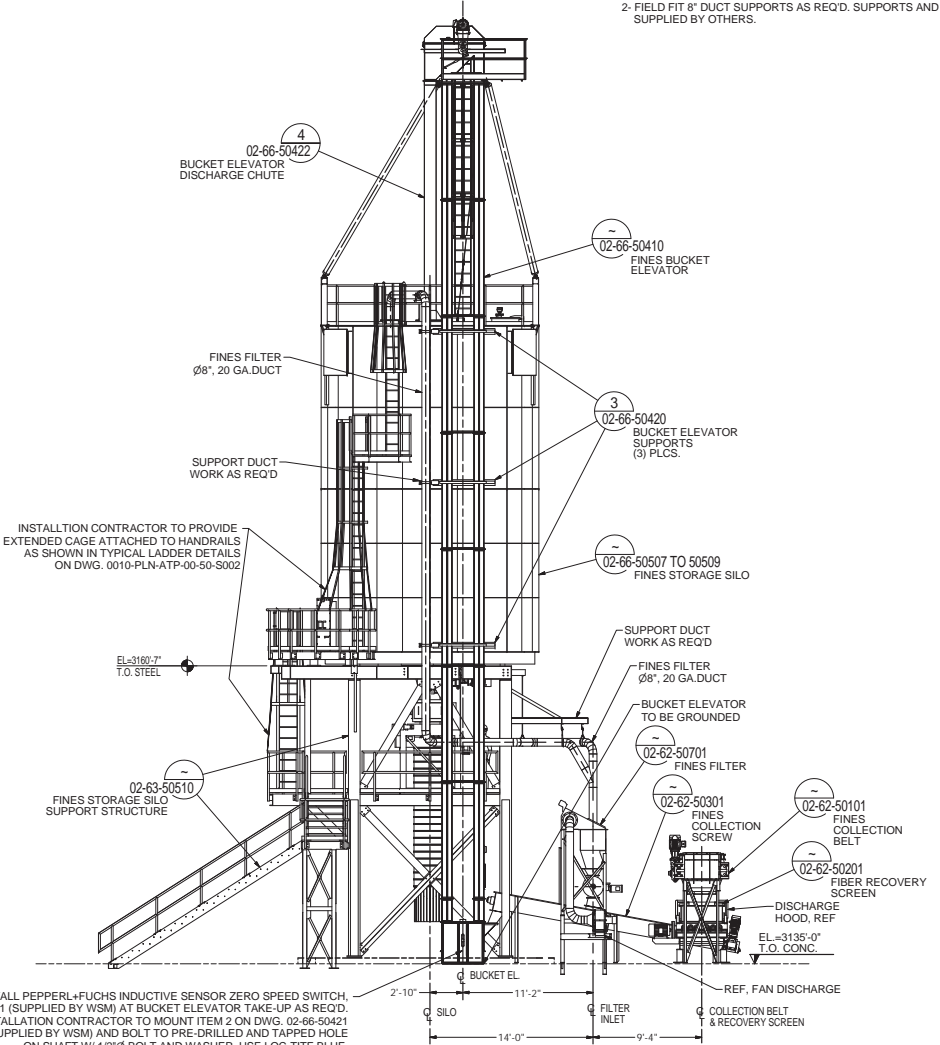


- NOTES:  
 1- WORK THIS DRAWING WITH DRAWINGS 24-62-00008 AND 24-62-00009  
 2- FIELD FIT 8" DUCT SUPPORTS AS REQ'D. SUPPORTS AND DUCTS SUPPLIED BY OTHERS.



**EAST ELEVATION**  
 SCALE 3/16"=1'-0"




**NORTH ELEVATION**  
 SCALE 3/16"=1'-0"

FIELD INSTALL PEPPERL+FUCHS INDUCTIVE SENSOR ZERO SPEED SWITCH, P/N NBN40-L2-Z0-V1 (SUPPLIED BY WSM) AT BUCKET ELEVATOR TAKE-UP AS REQ'D. INSTALLATION CONTRACTOR TO MOUNT ITEM 2 ON DWG. 02-66-50421 (SUPPLIED BY WSM) AND BOLT TO PRE-DRILLED AND TAPPED HOLE ON SHAFT W/ 1/2" Ø BOLT AND WASHER. USE LOC-TITE BLUE. INSTALLATION CONTRACTOR TO FABRICATE MOUNTING BRACKET FOR SENSOR AND LEAVE 1/4" GAP BETWEEN INDUCTIVE SENSOR AND ITEM 2. ALLOW FOR TAKE-UP MOVEMENT. GUARD AS REQ'D. TAG: SS-10504-1

**APPROVED FOR CONSTRUCTION**  
 DATE: February 18, 2013

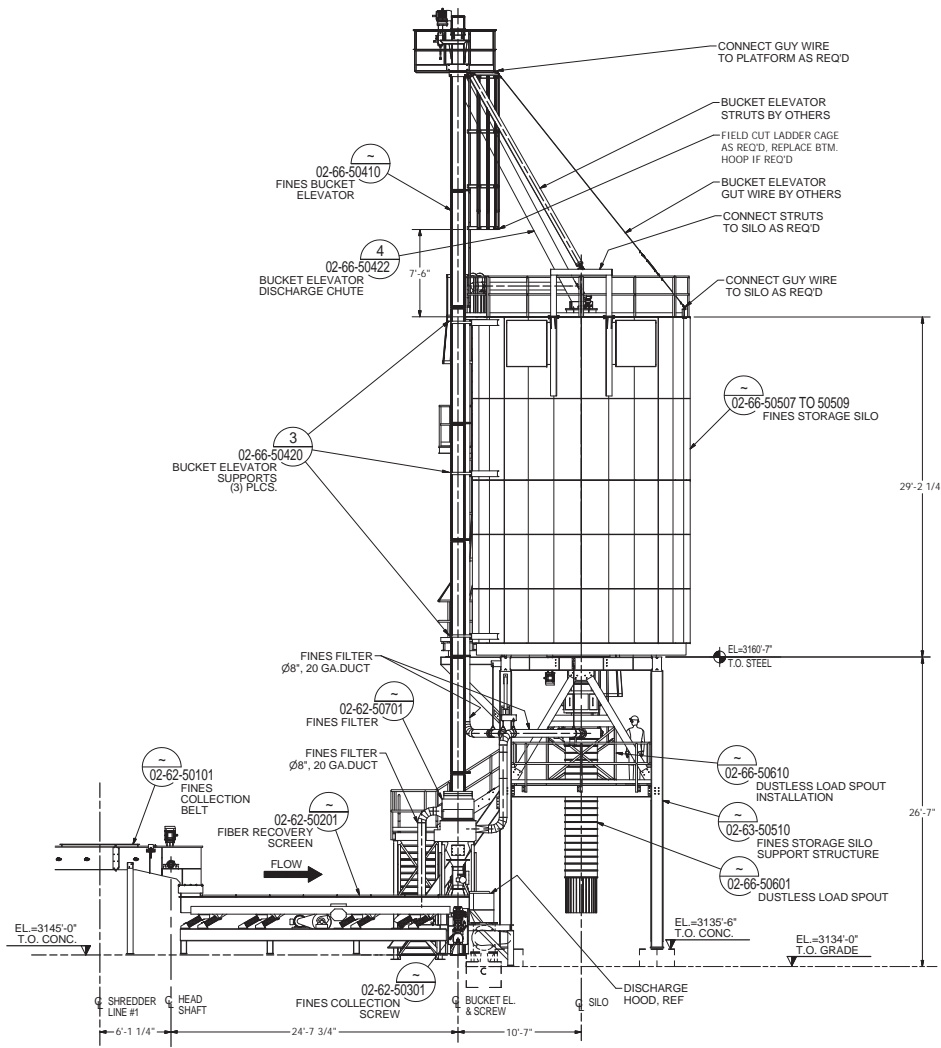
REV	DATE	DESCRIPTION	BWD	BWD
0	2/18/2013	APPROVED FOR CONSTRUCTION		
REVISION HISTORY				
DRAWN BY:	SJM	1/24/2013		
CHECKED BY:	BWD	2/18/2013		
APPROVED BY:	BWD	2/18/2013		
NEXT ASSY:				

	
<b>West Salem Machinery</b> www.westsalem.com	
<b>ABENER TEYMA HUGOTON</b>	
<b>FIBER RECOVERY AREA</b>	
<b>ENLARGED ELEVATIONS</b>	
SCALE:	AS NOTED
WSM PROJ. NO.:	11-001
SHEET OF:	
DWG NO.:	0010-PLN-WSM-24-62-00010
REV:	0

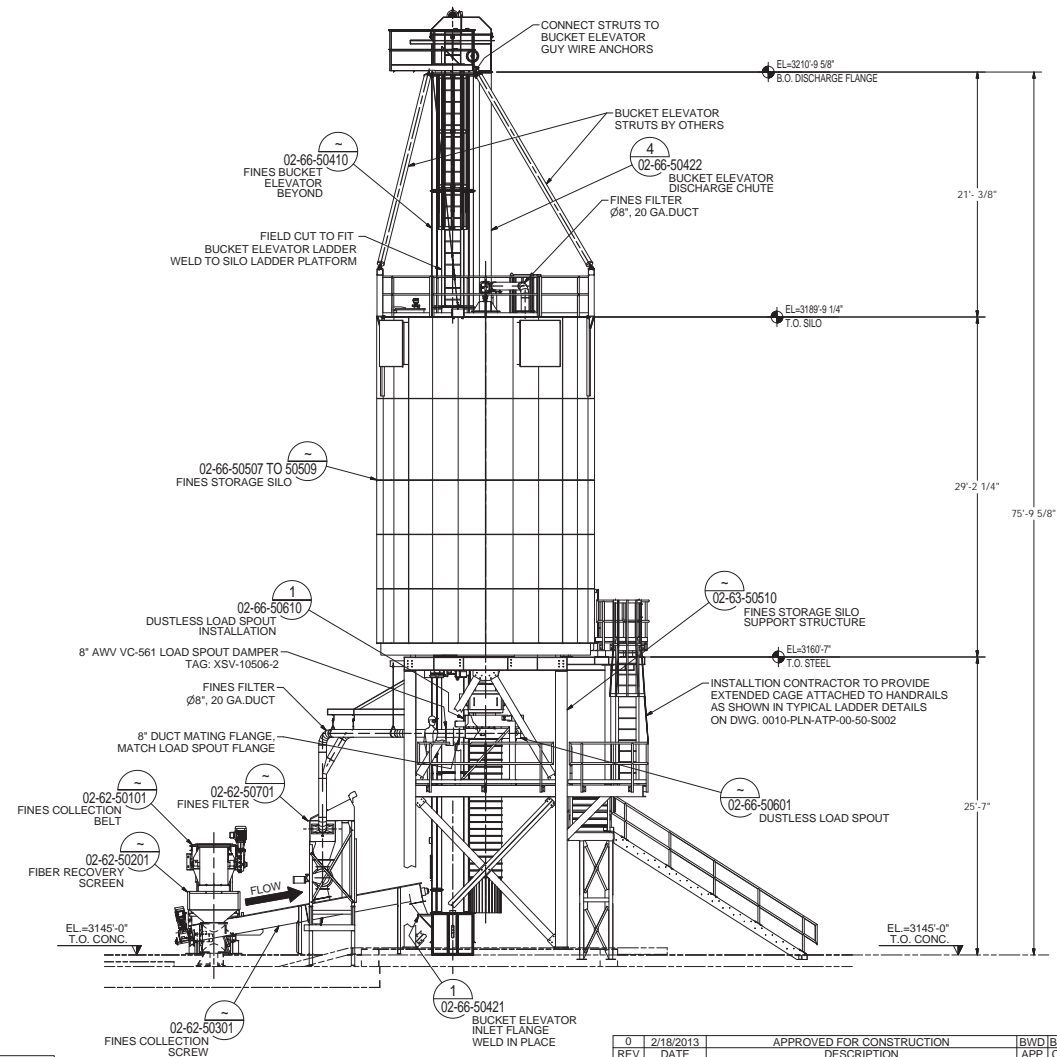
ABENSA EPC  
 Akener - Chesterfield - St. Louis, USA  
 18401 Swingle Ridge Rd, Suite 700  
 Chesterfield, MO 63017  
 PROLOG PACKAGE REF. # 00006P

NOTES:  
 1- WORK THIS DRAWING WITH DRAWINGS 24-62-0008 AND 24-62-0010  
 2- FIELD FIT 8" DUCT SUPPORTS AS REQ'D. SUPPORTS AND DUCTS SUPPLIED BY OTHERS.




**WEST ELEVATION**  
 SCALE 3/16"=1'-0"

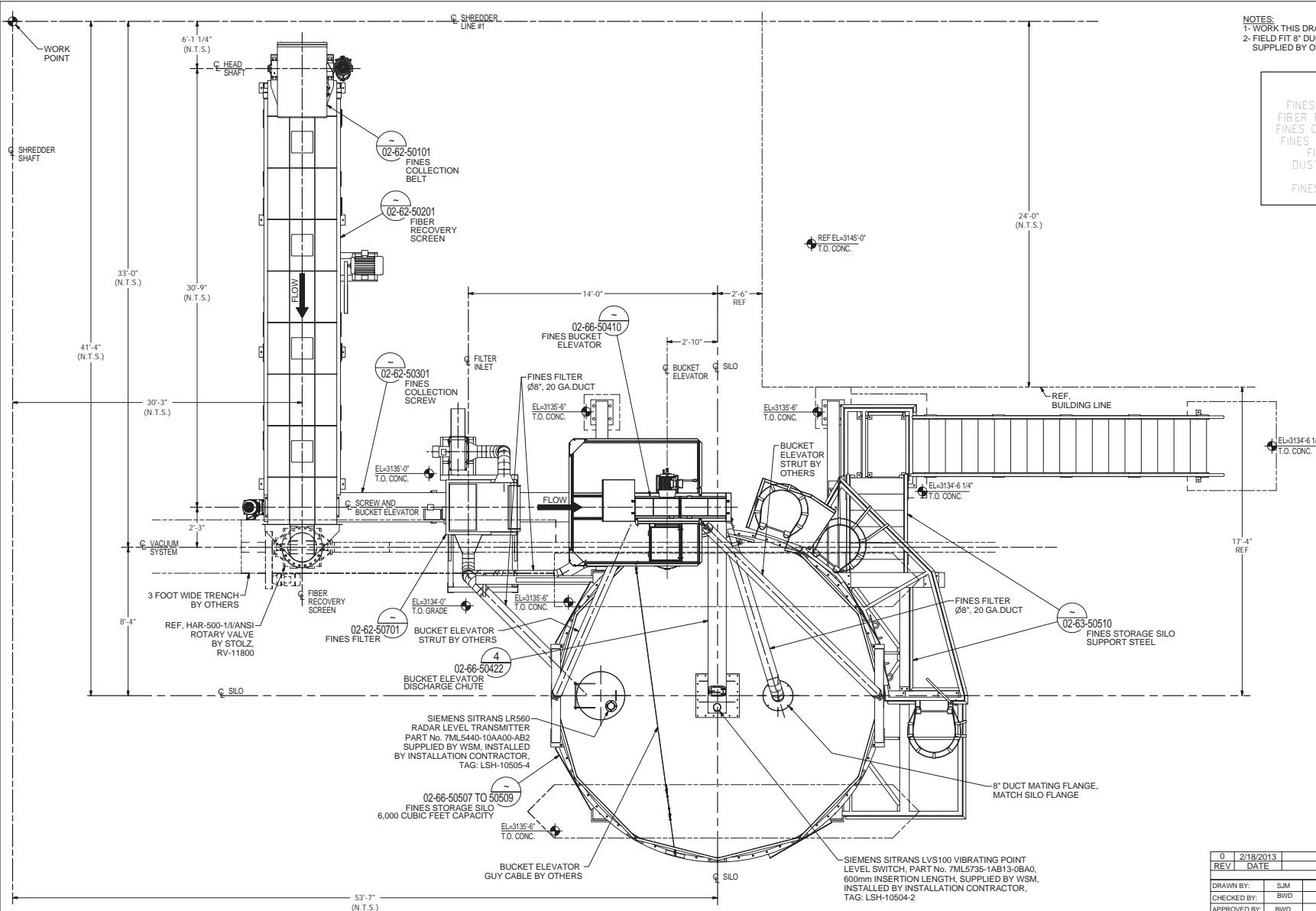
**APPROVED FOR CONSTRUCTION**  
 DATE: February 18, 2013



**SOUTH ELEVATION**  
 SCALE 3/16"=1'-0"

ARENSA EPC  
 Abener - Chesterfield - St. Louis, USA  
 18401 Swingle Ridge Rd, Suite 700  
 CHESTERFIELD, MO 63017  
 PROJ# PACKAGE REF. # 00006P

REV	DATE	DESCRIPTION	BWD	BWD
0	2/18/2013	APPROVED FOR CONSTRUCTION		
REVISION HISTORY				
DRAWN BY:	SJM	1/24/2013		
CHECKED BY:	BWD	2/18/2013		
APPROVED BY:	BWD	2/18/2013		
NEXT ASSY:				
 <b>West Salem Machinery</b> www.westsalem.com			<b>ABENER TEYMA HUGOTON</b> <b>FIBER RECOVERY AREA</b> <b>ENLARGED ELEVATIONS</b>	
SCALE:	AS NOTED	WSM PROJ. NO. 11-001	SHEET OF	REV
			DWG NO.	0010-PLN-WSM-24-62-00009
			REV	0



NOTES:  
 1- WORK THIS DRAWING WITH DRAWINGS 24-62-00009 AND 24-62-00010  
 2- FIELD FIT 8" DUCT SUPPORTS AS REQ'D. SUPPORTS AND DUCTS SUPPLIED BY OTHERS.

EQUIPMENT NUMBERS	
FINES COLLECTION BELT	- CV-10501
FIBER RECOVERY SCREEN	- SC-10502
FINES COLLECTION SCREEN	- CV-10503
FINES BUCKET ELEVATOR	- BE-10504
FINES STORAGE SILO	- T-10505
DUSTLESS LOAD SPOUT	- DLS-10506
FINES FILTER	- F-10507
FINES FILTER AIR LOCK	- RV-10508

**APPROVED FOR CONSTRUCTION**  
 DATE: February 18, 2013

**PLAN VIEW**  
 SCALE 3/8"=1'-0"

ABEINSA EPC  
 Abener - Chesterfield - St. Louis, USA  
 16401 Saingle Ridge Rd, Suite 700  
 CHESTERFIELD, MO 63017  
 PROLOG PACKAGE REF. # 00006P

REV	DATE	DESCRIPTION	BWD	BWD
0	2/18/2013	APPROVED FOR CONSTRUCTION		
REVISION HISTORY				
DRAWN BY:	SJM	1/24/2013		
CHECKED BY:	BWD	2/18/2013		
APPROVED BY:	BWD	2/18/2013		
NEXT ASSY:				

**West Salem Machinery**  
 www.westsalem.com

FILE:  
**ABENER TEYMA HUGOTON**  
 FIBER RECOVERY AREA  
 ENLARGED PLAN VIEW

SCALE:	AS NOTED	WSM PROJ. NO:	11-001	SHEET OF:		DWG NO:	0010-PLN-WSM-24-62-00008	REV:	0
--------	----------	---------------	--------	-----------	--	---------	--------------------------	------	---