

**31-E-234**  
 GAS CLEAN-UP  
 FEED/ EFFLUENT EXCHANGER  
 DESIGN DUTY MMBTU/HR: 0.366  
 SHELL SIDE DESIGN P: 800 PSIG & FV @ 350°F  
 SHELL SIDE DESIGN T: 250°F  
 SHELL SIDE DESIGN MOC: CARBON STEEL  
 TUBE SIDE DESIGN P: 800 PSIG & FV @ 350°F  
 TUBE SIDE DESIGN T: 250°F  
 TUBE SIDE MOC: 304SS

**31-V-180**  
 CHILLED SYNGAS SEPARATOR  
 TOTAL VOLUME: 110 GALLON  
 DESIGN T: 250°F  
 DESIGN P: 800 PSIG & FV @ 350°F  
 T/TDF HEIGHT: 8'-5"  
 OD: 18"  
 MOC: 304SS

**31-FL-19 A/B**  
 GAS CLEAN-UP PRE-FILTER/ COALESCERS  
 PORE SIZE: 1 MICRON  
 DESIGN T: 250°F  
 DESIGN P: 800 PSIG & FV @ 350°F  
 DIRTY DP: 5 PSI  
 MOC: CARBON STEEL

**31-C-196**  
 CO2/ BTEX ABSORBER  
 TOTAL VOLUME: 4154 GAL  
 PORE SIZE: 1 MICRON  
 DESIGN T: 250°F  
 DESIGN P: 800 PSIG & FV @ 350°F  
 T/T HEIGHT: 87'-8" (BOTTOM SEAM T.O.F.)  
 MOC: KILLED CARBON STEEL

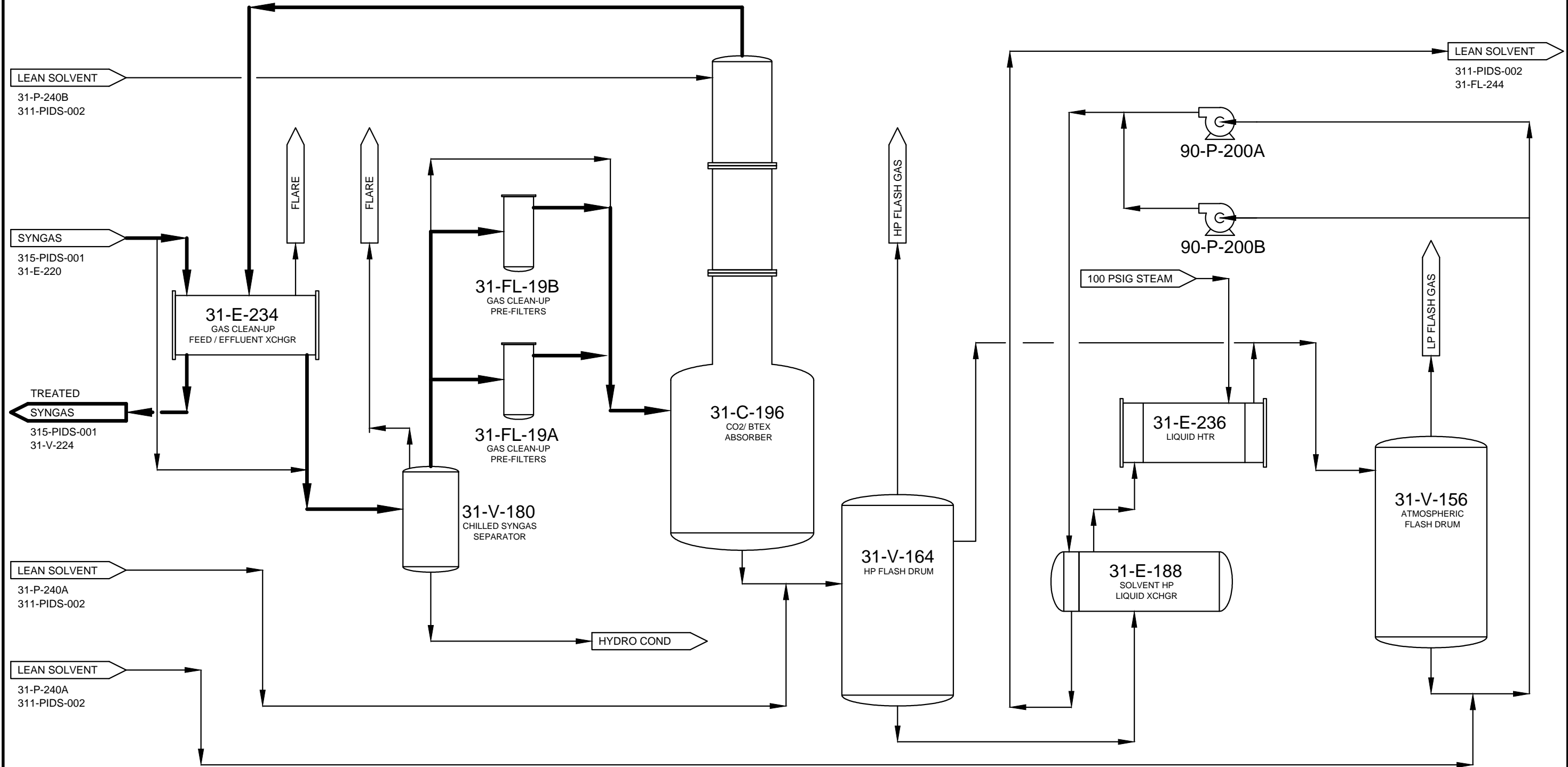
**31-V-164**  
 HP FLASH DRUM  
 TOTAL VOLUME: 3075 GAL  
 DESIGN T: 250°F  
 DESIGN P: 200 PSIG @ 250°F & FV @ 350°F  
 SIZE: 11'-6" T/T x 72" I.D.  
 MOC: KILLED CARBON STEEL

**31-E-188**  
 SOLVENT/ HP LIQUID EXCHANGER  
 DESIGN HEAT LOAD 4.02 MM HR  
 SHELL SIDE DESIGN P: 350 PSIG @ 250°F & FV @ 350°F  
 SHELL SIDE DESIGN T: 250°F  
 SHELL SIDE DESIGN MOC: KILLED CARBON STEEL  
 TUBE SIDE DESIGN P: 450 PSIG @ 250°F & FV @ 350°F  
 TUBE SIDE DESIGN T: 250°F  
 TUBE SIDE MOC: KILLED CARBON STEEL

**31-E-236**  
 HP LIQUID HEATER  
 DESIGN HEAT LOAD 1.44 MM HR  
 SHELL SIDE DESIGN P: 150 PSIG @ 400°F & FV @ 350°F  
 SHELL SIDE DESIGN T: 400°F  
 SHELL SIDE DESIGN MOC: CARBON STEEL  
 TUBE SIDE DESIGN P: 200 PSIG @ 250°F & FV @ 350°F  
 TUBE SIDE DESIGN T: 250°F  
 TUBE SIDE MOC: KILLED CARBON STEEL

**31-P-200A/B**  
 LEAN SOLVENT PUMPS  
 MOTOR HP: 100  
 MOTOR RPM: 3600  
 RATED HEAD, FT: 551  
 RATED FLOW: 212 GPM  
 MOC: KILLED CARBON STEEL

**31-V156**  
 ATMOSPHERIC FLASH DRUM  
 SIZE: 16'-7" T/T x 72" I.D.  
 DESIGN P: 150 PSIG @ 250°F & FV @ 350°F  
 DESIGN T: 250°F  
 TOTAL VESSEL VOLUME: 3943 GAL  
 MOC: KILLED CARBON STEEL



**NOTES:**  
 1. SEE DWGS 314-PID-002 & -003.

DESIGNED: S4M	DRAWING #: 311-PIDS-001	REV. A
DRAWN: TDL	PROCESS FLOW DIAGRAM ABSORBER / GAS CLEAN-UP SOPERTON, GA	
CHECKED: S4M		
FULL SCALE: 11 x 17	SCALE: NTS	DRAWING DATE: 1-31-13

