

31-FL-244
SOLVENT FILTER
 PORE DESIGN: 10 MICRONS
 DESIGN T: 250°F
 DESIGN P: 450 PSIG @ 250°F & FV @ 350°F
 MOC: KILLED CARBON STEEL

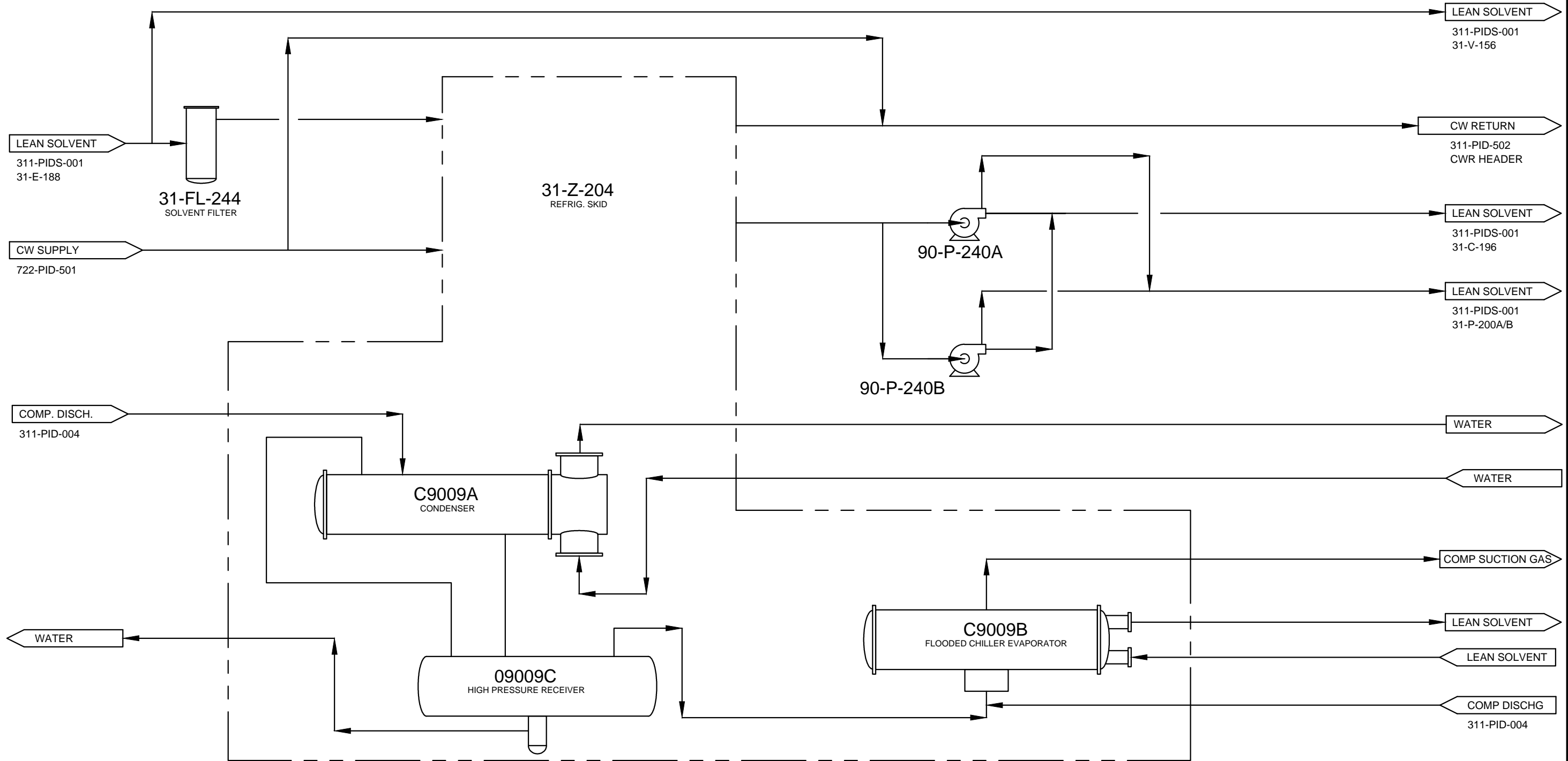
31-Z-204
REFRIDGERATION SKID
 DESIGN DUTY: 1.68 MM BTU/HR

31-P-240A/B
SOLVENT BOOSTER PUMPS
 MOC FLOW: 203 GPM @ 13°F
 MOTOR SIZE: 125 HP
 MOTOR RPM: 3600
 RATED HEAD: 1376 FT.
 MOC: KILLED CARBON STEEL

C9009C
HIGH PRESSURE RECEIVER
 DESIGN PRESSURE: 300 PSIG
 DESIGN TEMP: 300°F

09009A
CONDENSER
 DESIGN PRESSURE: 300 PSIG
 DESIGN TEMP: 300°F

09009B
FLOODED CHILLER EVAPORATOR
 AMMONIA EVAP TEMP: - 6°F
 DESIGN PRESSURE: 300 PSIG
 DESIGN TEMP: 350°F



NOTES:
 1. SEE DWGS 311-PID-003 & -005.

DESIGNED: S4M	DRAWING #: 311-PIDS-002	REV. A
DRAWN: TDL	PROCESS FLOW DIAGRAM GAS CLEAN-UP REFRIG. SYSTEM SOPERTON, GA	
CHECKED: S4M		
FULL SCALE: 11 x 17	SCALE: NTS	DRAWING DATE: 1-31-13

