

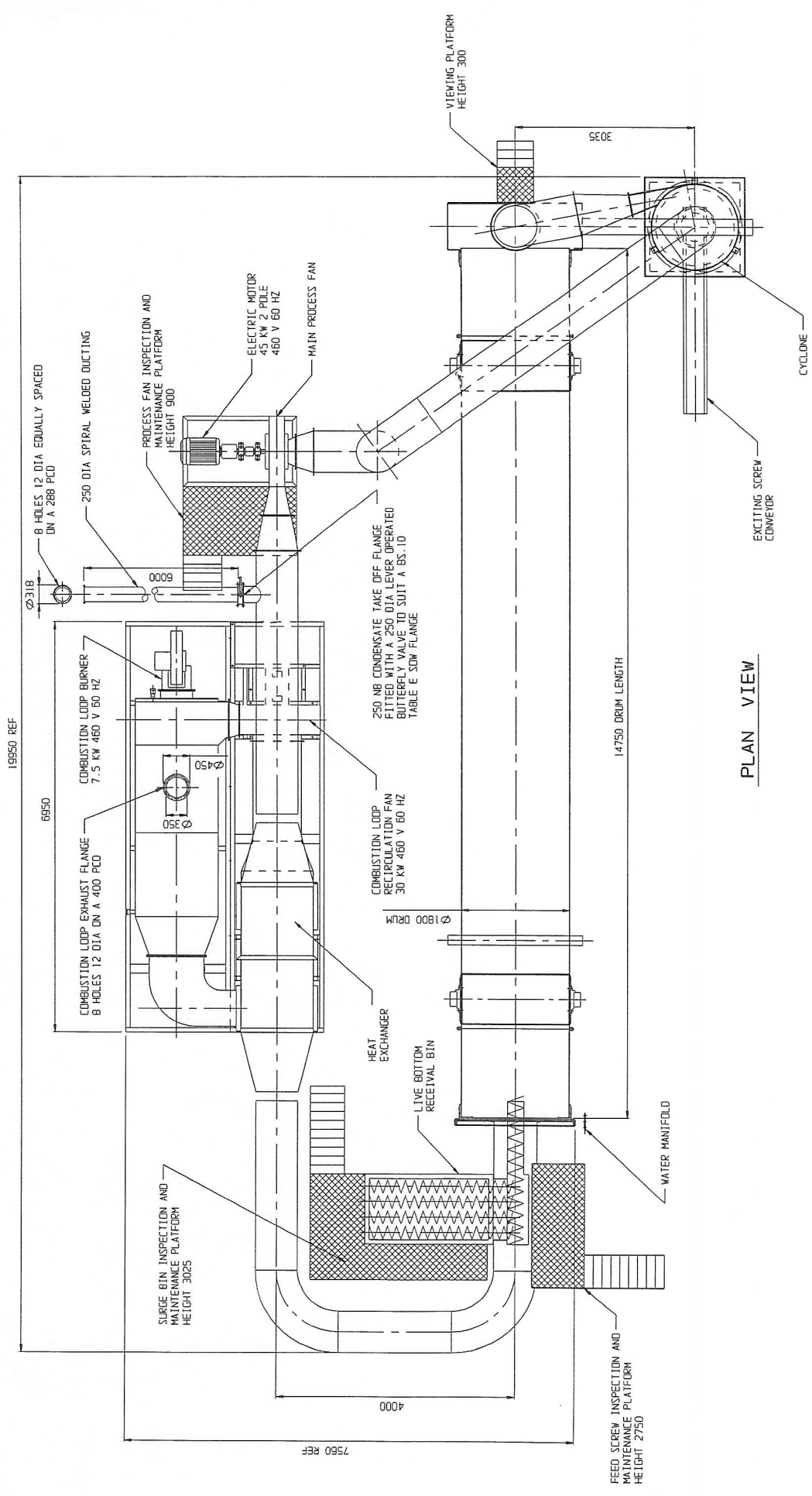
DRYING SOLUTIONS INC.	PRELIMINARY ARRANGEMENT	SHS DRYER
Drawn: C.K.	Scale: 1/50	Client: GREAT PLAINS PROTEIN - USA
App'd: APRIL 2008	Date: APRIL 2008	Req. No: 2L 605
		Rev: 3
		AI



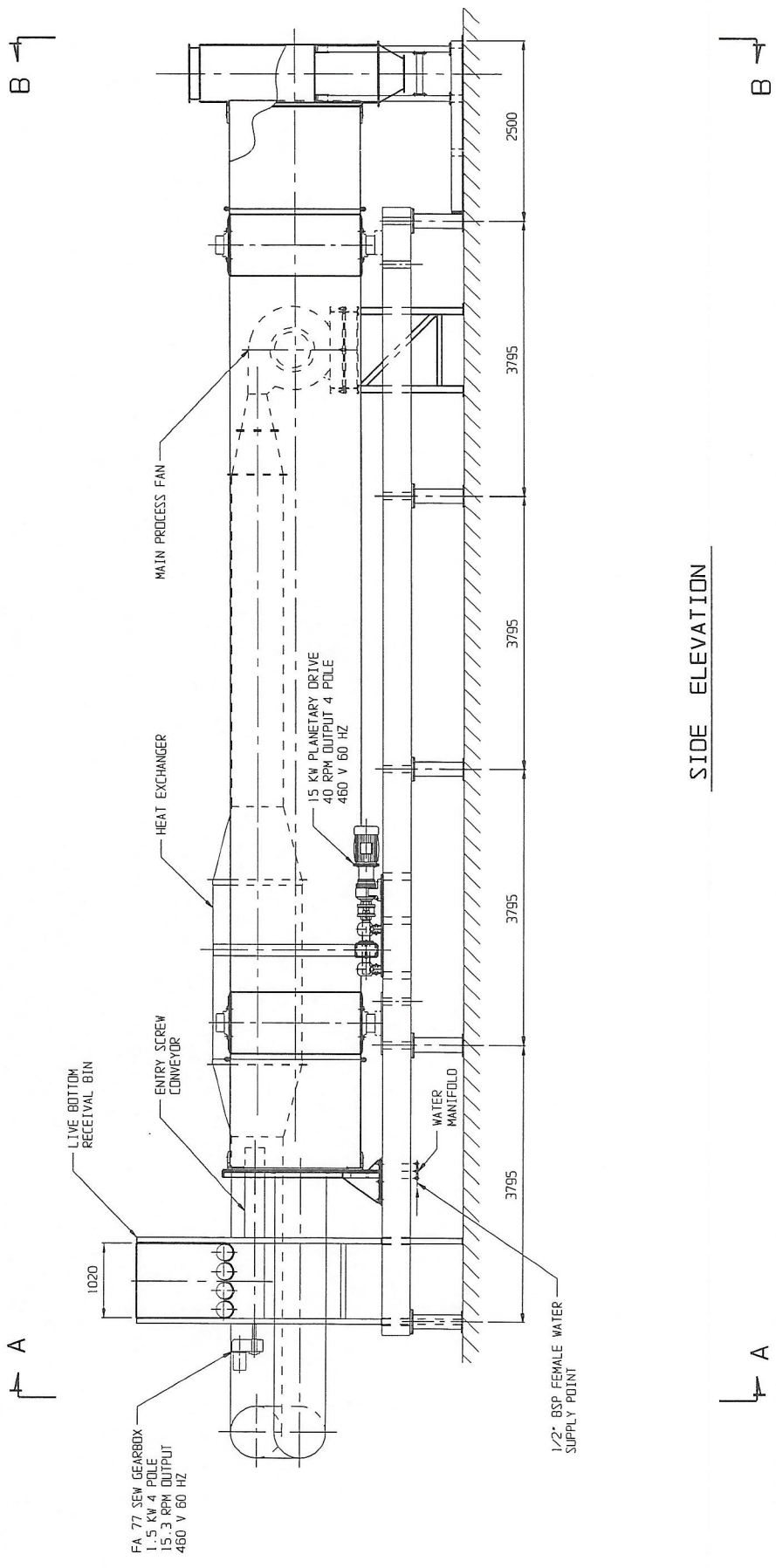
END ELEVATION A - A

SIDE ELEVATION

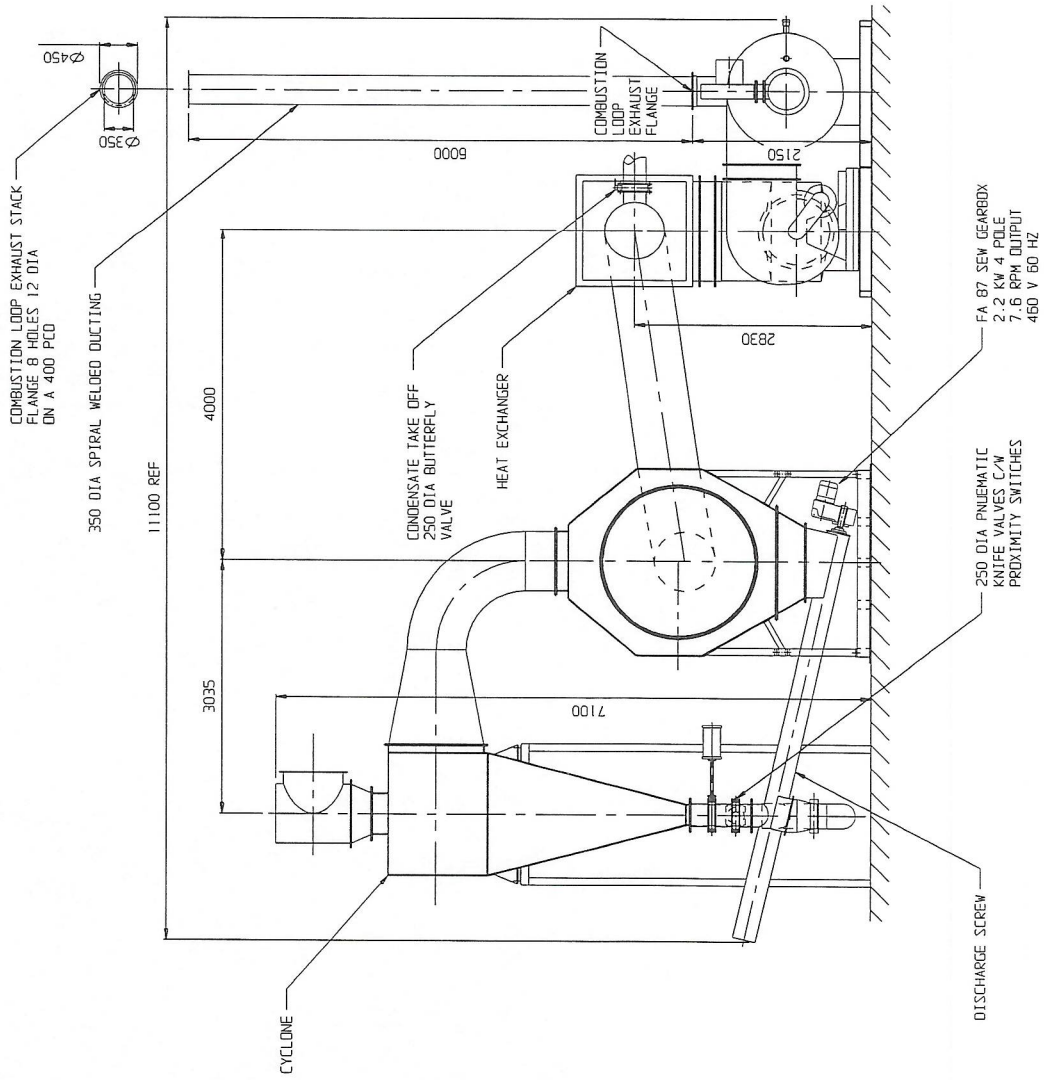
END ELEVATION B - B



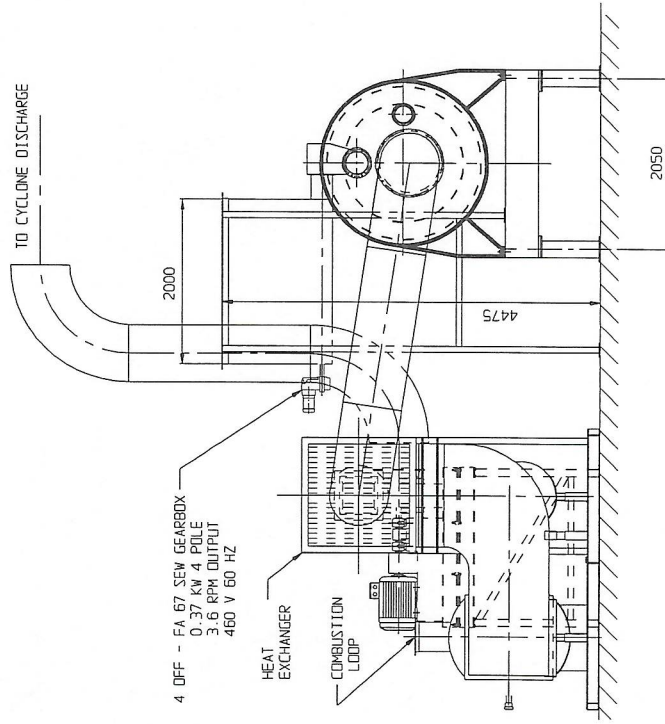
PLAN VIEW



SIDE ELEVATION



END ELEVATION B - B



END ELEVATION A - A