

HYDRAULIC HOSE RUNS AND QUITY
HOSE ROUTING AND LOCATION BY CUSTOMER

FROM HPU TO ROD END OF CYLINDER
 (2) HOSES @ 264" LONG WITH 2.8" O.D.
 (2) HOSES @ 95" LONG WITH 2.8" O.D.

FROM HPU TO BLIND SIDE OF CYLINDER
 (2) HOSES @ 264" LONG WITH 2.8" O.D.
 (2) HOSES @ 50" LONG WITH 2.8" O.D.

HOSE SUPPLIED BY McLANAHAN
 IF LENGTHS PROVIDED ARE NOT ADEQUATE,
 THEN CUSTOMER TO SUPPLY HARD PIPE
 RATED FOR 4,000 PSI, 2"DIA. MIN

HOSES TO DROP BELOW FLOOR LEVEL

VERTICAL LOAD 10,000#
1000# IN X&Y DIRECTION

GENERAL LAYOUT

SCALE 1:40

PRELIMINARY NOT FOR CONSTRUCTION

THIS DRAWING, INCLUDING THE INFORMATION HEREON, IS NOT TO BE USED FOR ERECTION PURPOSES UNLESS CERTIFIED BY THE McLANAHAN CORPORATION. THE DRAWING, DESIGN AND DETAIL IS THE PROPERTY OF McLANAHAN CORPORATION AND SHALL NOT BE MODIFIED, COPIED OR USED DIRECTLY OR INDIRECTLY FOR ANY OTHER PURPOSE WITHOUT THE WRITTEN APPROVAL OF THE McLANAHAN CORPORATION. ALL RIGHTS OF DESIGN AND INVENTION ARE RESERVED.

THE LOADED WEIGHT OF THIS MACHINE IS (SEE NOTE) LBS. WHEN DESIGNING THE SUPPORTING STRUCTURE, A FACTOR OF SAFETY SHOULD BE APPLIED TO THE MACHINE LOADED WEIGHT PER THE FOLLOWING CHART:

VERTICAL LOADS	HORIZONTAL LOADS	
	LATERAL	TRANSVERSE
2.0	SEE NOTE PERPENDICULAR TO THE ROTATING AXIS OF THE	SEE NOTE PARALLEL TO THE ROTATING AXIS OF THE

THIS DOCUMENT IS A TRADE SECRET AND ANY USE OF THE INFORMATION, EXCEPT BY ITS INTENDED RECEIVER, IS STRICTLY PROHIBITED. ANY MISAPPROPRIATION OF THE INFORMATION SHALL MAKE THE NONINTENDED RECEIVER LIABLE FOR ANY AND ALL DAMAGES SUFFERED AS A RESULT OF THE MCLANAHAN CORPORATION.

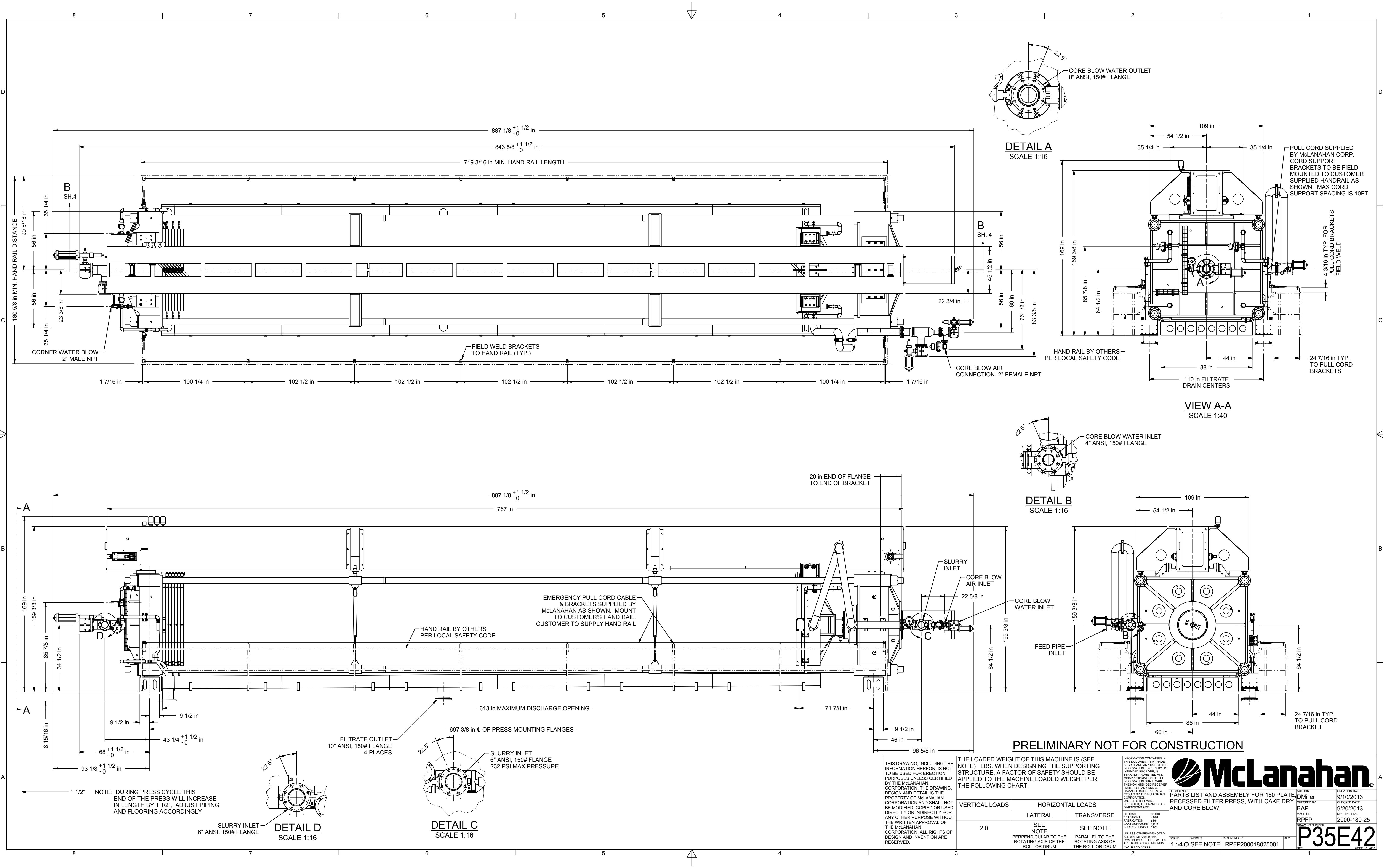
UNLESS OTHERWISE SPECIFIED, TOLERANCES ON DIMENSIONS ARE:

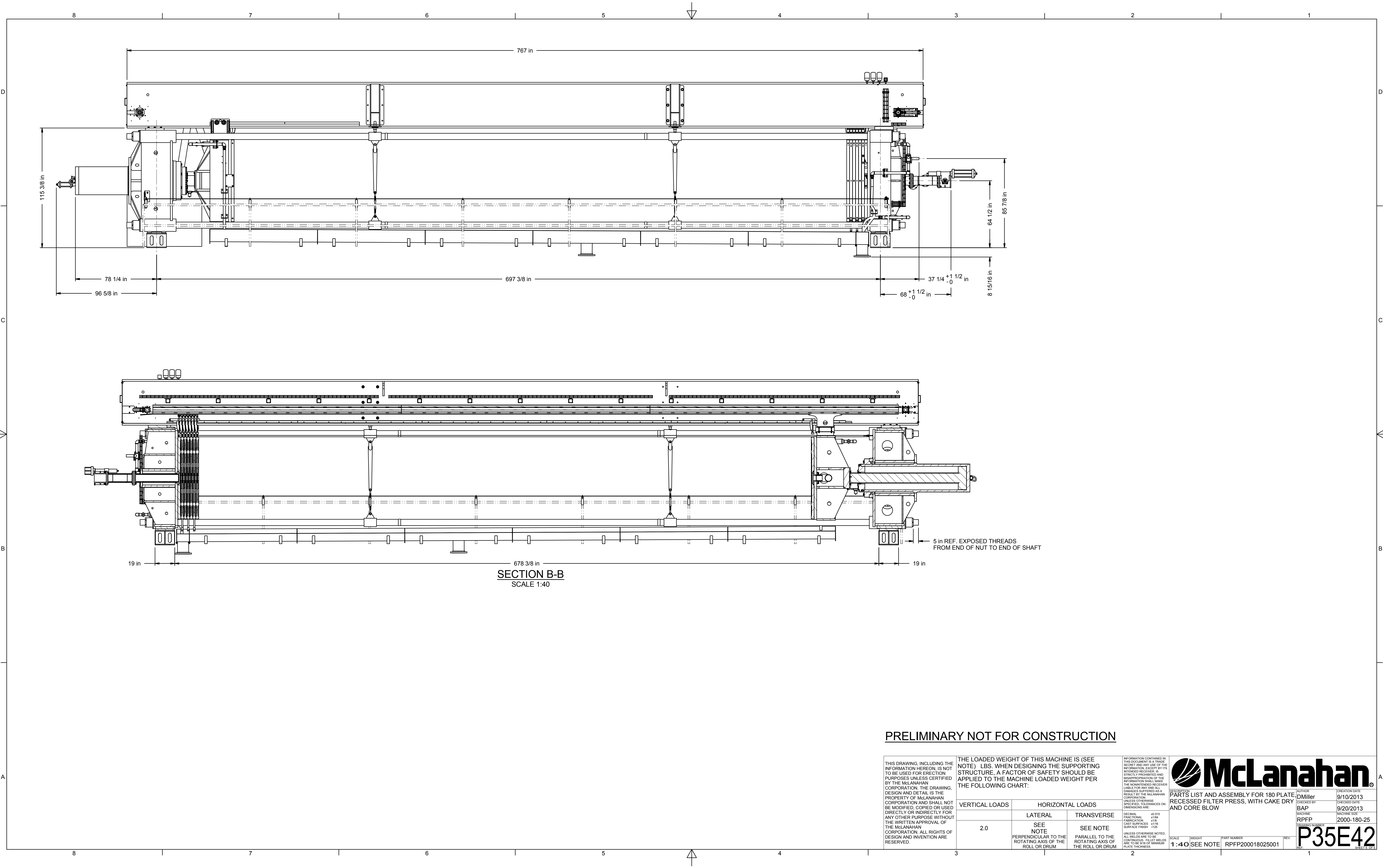
DECIMAL	±0.010
FRACTIONAL	±1/64
FABRICATION	±1/8
CASE SURFACES	±1/16
SURFACE FINISH	√125

UNLESS OTHERWISE NOTED, ALL WELDS ARE TO BE CONTINUOUS. FILLET WELDS ARE TO BE 3/16 OF MINIMUM



P35E42





SECTION B-B
SCALE 1:40

PRELIMINARY NOT FOR CONSTRUCTION

THIS DRAWING, INCLUDING THE INFORMATION HEREON, IS NOT TO BE USED FOR ERECTION PURPOSES UNLESS CERTIFIED BY THE McLANAHAN CORPORATION. THE DRAWING, DESIGN AND DETAIL IS THE PROPERTY OF McLANAHAN CORPORATION AND SHALL NOT BE MODIFIED, COPIED OR USED DIRECTLY OR INDIRECTLY FOR ANY OTHER PURPOSE WITHOUT THE WRITTEN APPROVAL OF THE McLANAHAN CORPORATION. ALL RIGHTS OF DESIGN AND INVENTION ARE RESERVED.

THE LOADED WEIGHT OF THIS MACHINE IS (SEE NOTE) LBS. WHEN DESIGNING THE SUPPORTING STRUCTURE, A FACTOR OF SAFETY SHOULD BE APPLIED TO THE MACHINE LOADED WEIGHT PER THE FOLLOWING CHART:

VERTICAL LOADS	HORIZONTAL LOADS	
	LATERAL	TRANSVERSE
2.0	SEE NOTE PERPENDICULAR TO THE ROTATING AXIS OF THE ROLL OR DRUM	SEE NOTE PARALLEL TO THE ROTATING AXIS OF THE ROLL OR DRUM

INFORMATION CONTAINED IN THIS DOCUMENT IS A TRADE SECRET AND ANY USE OF THE INFORMATION EXCEPT BY ITS INTENDED RECEIVER IS STRICTLY PROHIBITED AND MISAPPROPRIATION OF THE INFORMATION SHALL MAKE THE NONINTENDED RECEIVER LIABLE FOR ANY AND ALL DAMAGES SUFFERED AS A RESULT BY THE McLANAHAN CORPORATION, UNLESS OTHERWISE SPECIFIED. TOLERANCES OR DIMENSIONS ARE:

DECIMAL	FRACTIONAL
±0.010	±1/64
FABRICATION	±1/8
CAST SURFACES	±1/16
SURFACE FINISH	√125

UNLESS OTHERWISE NOTED, ALL WELDS ARE TO BE CONTINUOUS. FILLET WELDS ARE TO BE 5/16 OF MINIMUM PLATE THICKNESS.

McLanahan

DESCRIPTION: PARTS LIST AND ASSEMBLY FOR 180 PLATE RECESSED FILTER PRESS, WITH CAKE DRY AND CORE BLOW

AUTHOR: DMiller
CHECKED BY: BAP
MACHINE: RPFP
DRAWING NUMBER: P35E42

CREATION DATE: 9/10/2013
CHECKED DATE: 9/20/2013
MACHINE SIZE: 2000-180-25

SCALE: 1:40
WEIGHT: SEE NOTE
PART NUMBER: RPFP200018025001
REV. REF.