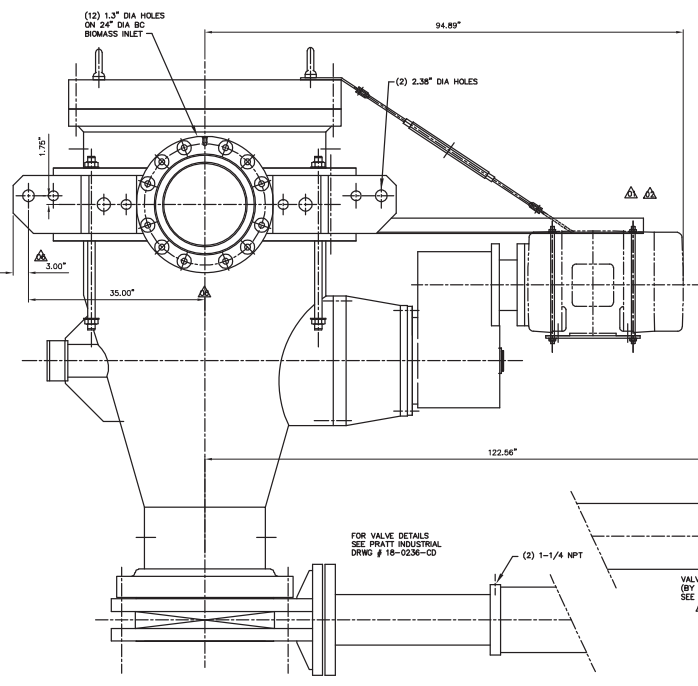


EQUIPMENT LIFTING



Item No.	Description	Qty	Unit
1	T-PIPE	1	EA
2	GEAR REDUCER	1	EA
3	SHREDDER ROTOR	1	EA
4	SHREDDER DRIVE	1	EA
5	BLOW BACK DAMPER	1	EA
6	CUT-OFF VALVE	1	EA

SHIPPING AND ASSEMBLY

T-PIPE WILL BE PRE-ASSEMBLED PRIOR TO SHIPMENT
 BLOW BACK DAMPER ASSEMBLY MAY BE REMOVED FOR SHIPMENT.
 TO BE INSTALLED IN FIELD BY CUSTOMER.

RECEIVING AND STORAGE

GEAR REDUCER WILL BE SHIPPED WITH STORAGE LUBRICANT ONLY. CUSTOMER TO INSTALL OPERATION LUBRICANTS PRIOR TO START UP.
 ALL NON PAINTED CARBON STEEL SURFACES WILL BE PROTECTED AGAINST RUST PRIOR TO SHIPMENT. CUSTOMER TO INSURE ADEQUATE RUST PROTECTION AFTER RECEIVING. SEE INSTALLATION AND MAINTENANCE MANUAL FOR DETAIL STORAGE INSTRUCTION.

WEIGHTS:	SHREDDER DRIVE
TOTAL	22450 LB
TOP COVER	4200 LB (MOTOR BY CUSTOMER)
SHREDDER ROTOR	1400 LB
SHREDDER DRIVE	3000 LB
BLOW BACK DAMPER	1400 LB
CUT-OFF VALVE	4600 LB
MOTOR	100 HP, 1750 RPM (BY CUSTOMER)
GEAR REDUCER	8.5:1 RATIO
NORMAL SPEED	197 RPM

FLANGE BOLT HOLE PATTERN

FLANGE BOLT HOLES STRADDLE CL OR AS SHOWN.

PRESSURE VESSEL DESIGN SPECIFICATION	
VESSEL MATERIALS AND WORKMANSHIP ACCORDING TO ASME CODE SECTION VIII DIV 1, 2011 EDITION AND REGIONAL CODES FOR UNFIRE PRESSURE VESSELS.	
MAX DESIGN PRESSURE	300 PSIG
MAX DESIGN TEMPERATURE	800 F
MIN DESIGN PRESSURE	-15 PSIG
MIN DESIGN METAL TEMPERATURE	-20 F @ 350 PSIG
IMPACT TEST	N/A
X-RAY	SPOT/AS NEEDED
HYDR. TEST PRESSURE	573 PSIG
CORROSION ALLOWANCE	NONE

CUT-OFF VALVE INSTALLATION AND ORIENTATION

CUT-OFF VALVE CAN BE INSTALLED IN ANY POSITION (360°) AROUND THE VERTICAL CL. OF THE T-PIPE (RESPECTING THE MOUNTING FLANGE BOLT POSITION). CUSTOMER TO PROVIDE VALVE ACTUATOR SUPPORT (HANGER) WITH 250 LB VERTICAL CAPACITY.

Solutions 4 Mfg
 Asset B-1011
 T-Pipe 48" Shredder

DATE	BY	REV	DESCRIPTION
10/11/11	HT	01	ISSUED
10/11/11	HT	02	REVISED
10/11/11	HT	03	REVISED
10/11/11	HT	04	REVISED
10/11/11	HT	05	REVISED
10/11/11	HT	06	REVISED
10/11/11	HT	07	REVISED
10/11/11	HT	08	REVISED
10/11/11	HT	09	REVISED
10/11/11	HT	10	REVISED
10/11/11	HT	11	REVISED
10/11/11	HT	12	REVISED
10/11/11	HT	13	REVISED
10/11/11	HT	14	REVISED
10/11/11	HT	15	REVISED
10/11/11	HT	16	REVISED
10/11/11	HT	17	REVISED
10/11/11	HT	18	REVISED
10/11/11	HT	19	REVISED
10/11/11	HT	20	REVISED
10/11/11	HT	21	REVISED
10/11/11	HT	22	REVISED
10/11/11	HT	23	REVISED
10/11/11	HT	24	REVISED