

41-V-180
CATALYTIC CONVERTER STEAM DRUM
 SIZE: 42"ID x 10' T/T
 DESIGN P: 2250 PSIG / FV
 DESIGN T: 650°F
 TOTAL VESSEL VOLUME: 107 CUBIC FT
 MOC: CARBON STEEL

41-V-630
STEAM BLOWDOWN DRUM
 SIZE: 24"OD x 8' T/T
 DESIGN P: 150 PSIG
 DESIGN T: 550°F
 TOTAL VESSEL VOLUME: 185 GAL
 MOC: SA-312-347

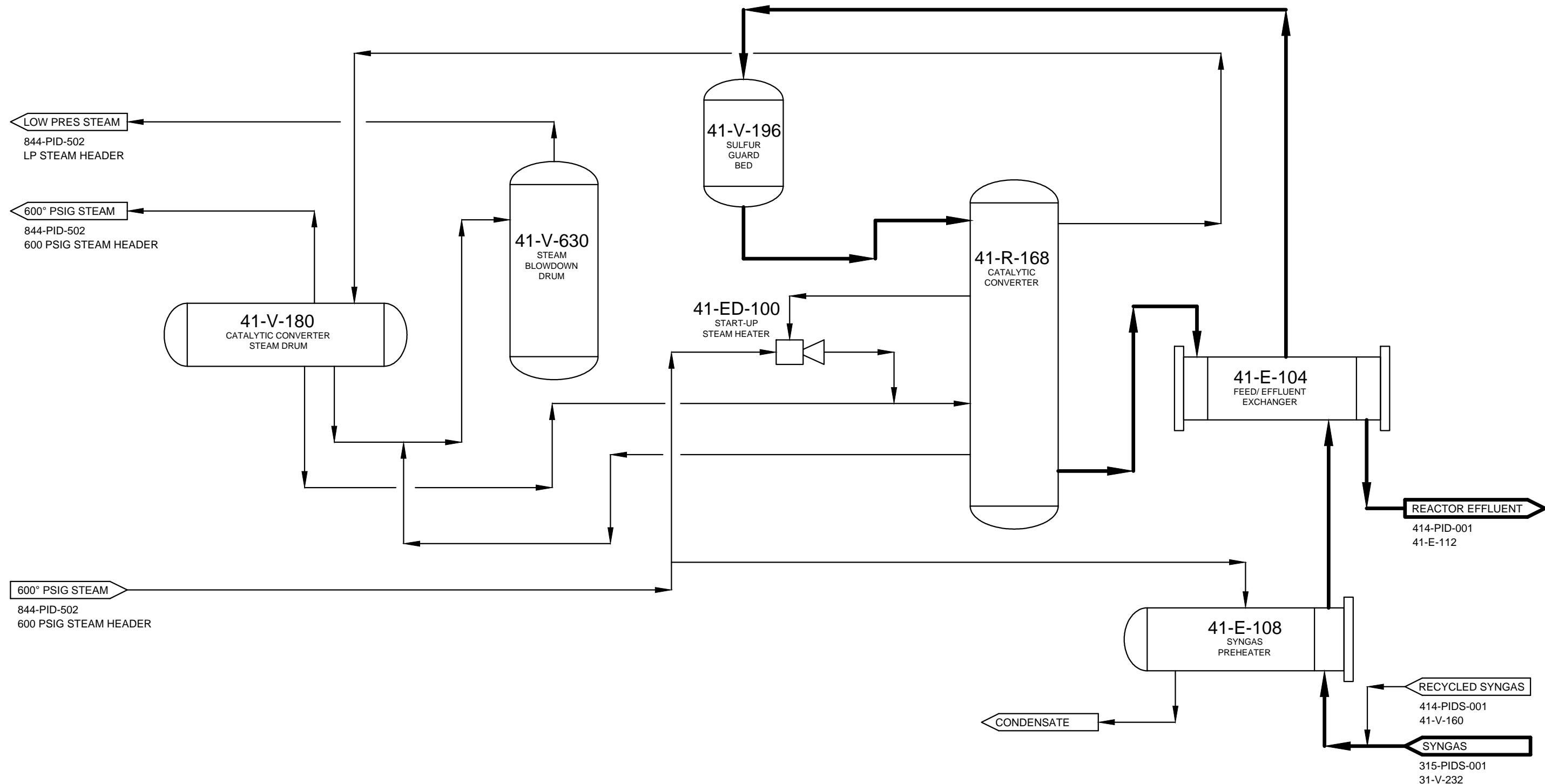
41-V-196
SULFUR GUARD BED
 SIZE: 4'ID x 15' T/T
 DESIGN P: 1650 PSIG
 DESIGN T: 550°F
 MOC: CARBON STEEL

41-ED-100
START-UP STEAM HEATER
 MASS FLOW: 600 GPM
 DESIGN P: 2250 PSIG/ FV
 DESIGN T: 650°F
 MOC: CARBON STEEL

41-R-168
CATALYTIC CONVERTER
 SHELL SIDE DESIGN P: 2250 PSIG/ FV
 SHELL SIDE DESIGN T: 650°F
 SHELL SIDE MOC: SA-516-70N
 TUBE SIDE DESIGN P: 1650 PSIG/ FV
 TUBE SIDE DESIGN T: 650°
 TUBE SIDE MOC: SA-312 TP304

41-E-108
SYNGAS PRE-HEATER
 DESIGN DUTY: 8.8 MMBTU/HR
 SHELL SIDE DESIGN P: 1270 PSIG/ FV
 SHELL SIDE DESIGN T: 350°F
 SHELL SIDE MOC: SA-106 GRB
 TUBE SIDE DESIGN P: 1650 PSIG/ FV
 TUBE SIDE DESIGN T: 500°
 TUBE SIDE MOC: SA-179

41-E-104
FEED/ EFFLUENT EXCHANGER
 DESIGN DUTY: 7.1 MMBTU/HR
 SHELL SIDE DESIGN P: 1650 PSIG/ FV
 SHELL SIDE DESIGN T: 650°F
 SHELL SIDE MOC: SA-335 P11
 TUBE SIDE DESIGN P: 1650 PSIG/ FV
 TUBE SIDE DESIGN T: 700°
 TUBE SIDE MOC: SA-213 T11



NOTES:

1. SEE DRAWINGS 411-PID-001 &-002 & 413-PID-001.

DESIGNED: S4M	DRAWING #: 411-PIDS-001	REV. A
DRAWN: TDL	PROCESS FLOW DIAGRAM CATALYTIC CONVERSION AREA 411 & 413 SOPERTON, GA	
CHECKED: S4M		
FULL SCALE: 11 x 17	SCALE: NTS	DRAWING DATE: 2-12-13

