

41-E-112
 LOOP CONDENSER
 DESIGN DUTY: 9.8 MMBTU/HR
 SHELL SIDE DESIGN P: 150 PSIG
 SHELL SIDE DESIGN T: 250°F
 SHELL SIDE MOC: SA-516 70N
 TUBE SIDE DESIGN P: 1650 PSIG/ FV
 TUBE SIDE DESIGN T: 385°
 TUBE SIDE MOC: SA-213 TP304

41-V-184
 HIGH PRESSURE SEPARATOR
 SIZE: 42"ID x 8'-10" T/T
 DESIGN P: 1650 PSIG/ FV
 DESIGN T: 250°F
 TOTAL VESSEL VOLUME: 92.2 C.F.
 MOC: SA-516-70N, 309L CLAD

41-VM-184
 HIGH PRESSURE SEPARATOR
 MIST ELIMINATOR

41-V-188
 LOW PRESSURE SEPARATOR
 SIZE: 24"OD x 10'-9" T/T
 DESIGN P: 200 PSIG/ FV
 DESIGN T: 250°F
 TOTAL VESSEL VOLUME: 33 C.F.
 MOC: SA-106, SA-516-70N

41-VM-188
 LOW PRESSURE SEPARATOR
 MIST ELIMINATOR

41-ED-638
 LINE FLASH EDUCTOR
 SUCTION GAS FLOW: 125 LB/HR
 DESIGN P: 200 PSIG
 DESIGN T: 250°

41-V-192
 SYNLOOP COMPRESSOR
 SUCTION SCRUBBER
 SIZE: 42"ID x 8'-10" T/T
 DESIGN P: 1650 PSIG/ FV
 DESIGN T: 350°F
 TOTAL VESSEL VOLUME: 92.2 C.F.
 MOC: SA-106, SA-516-70N

41-VM-192
 SYNLOOP COMPRESSOR SUCTION
 SCRUBBER MIST ELIMINATOR

41-V-144
 SYNLOOP COMPRESSOR
 SUCTION BOTTLE 1
 DESIGN P: 1335 (HOLD) PSIG
 DESIGN T: 250°
 MOC: CARBON STEEL

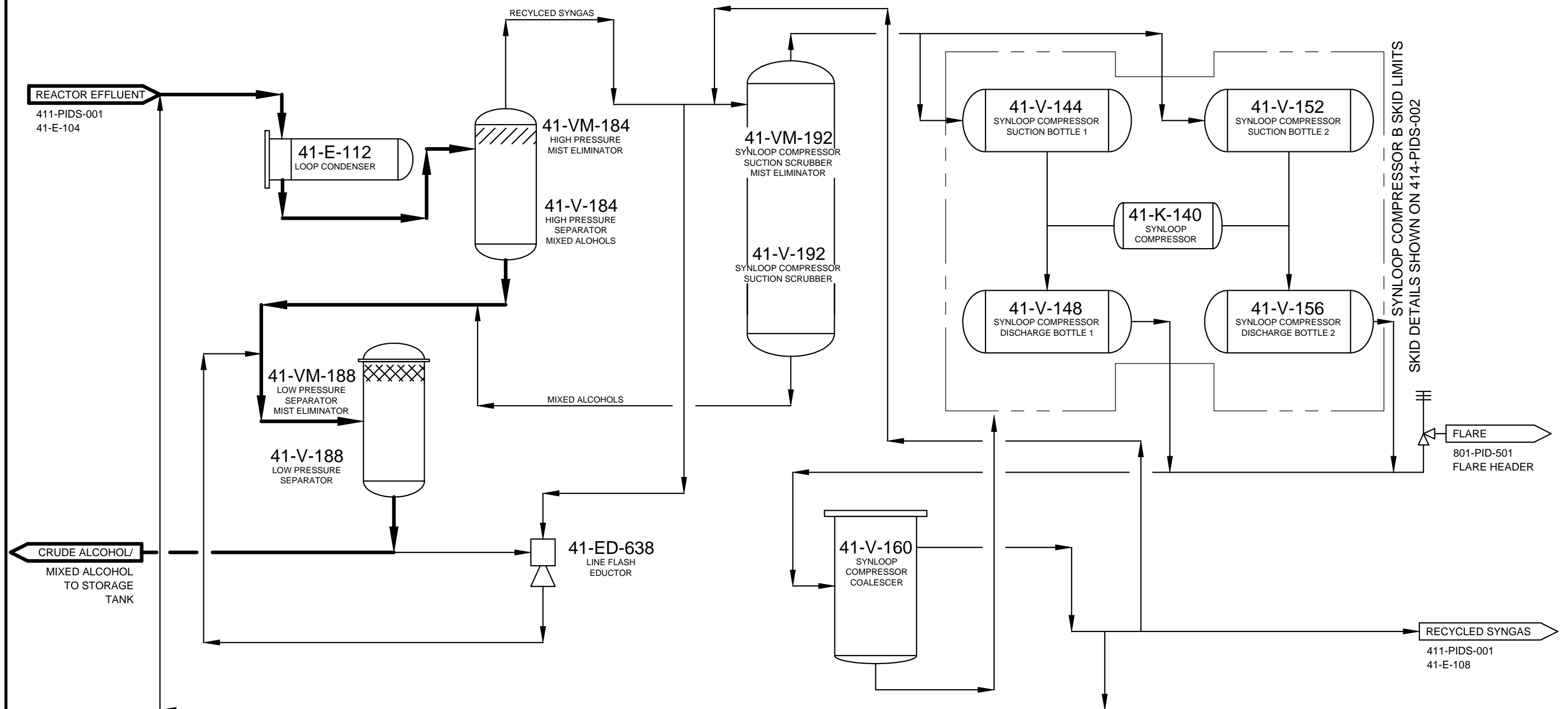
41-V-148
 SYNLOOP COMPRESSOR
 DISCHARGE BOTTLE 1
 DESIGN P: 1850 PSIG
 DESIGN T: 350°
 MOC: CARBON STEEL

41-K-140
 SYNLOOP COMPRESSOR

41-V-152
 SYNLOOP COMPRESSOR
 SUCTION BOTTLE 2
 DESIGN P: 1335 (HOLD) PSIG
 DESIGN T: 250°
 MOC: CARBON STEEL

41-V-156
 SYNLOOP COMPRESSOR
 DISCHARGE BOTTLE 2
 DESIGN P: 1850 PSIG
 DESIGN T: 350°
 MOC: CARBON STEEL

41-V-160
 SYNLOOP COMPRESSOR
 COALESCER
 MICRON SIZE: 99.98% REMOVAL @ 0.3 MICRONS
 DESIGN P: 1850 PSIG
 DESIGN T: 350°
 MOC: CARBON STEEL



NOTES:

1. SEE DRAWINGS: 414-PID-001,-002 &-003 & 415-PID-001 &-002.
2. STORAGE TANKS NOT INCLUDED.

DESIGNED: S4M	DRAWING #: 414-PIDS-001	REV. A
DRAWN: TDL	PROCESS FLOW DIAGRAM	
CHECKED: S4M	ALCOHOL COOLING & SYNLOOP COMPRESSOR	
FULL SCALE: 11 x 17	AREAS 414 & 415 SOPERTON, GA	
SCALE: NTS	DRAWING DATE: 2-12-13	

