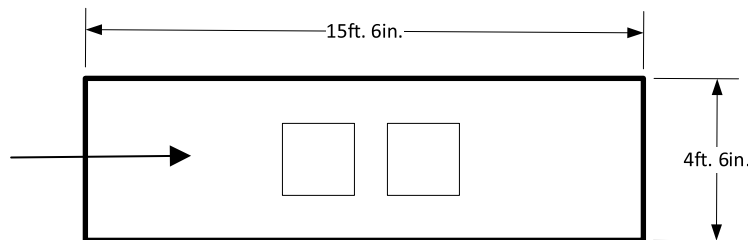
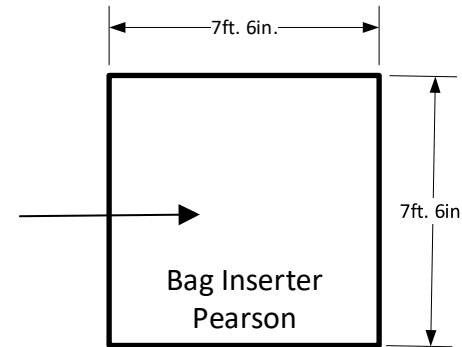
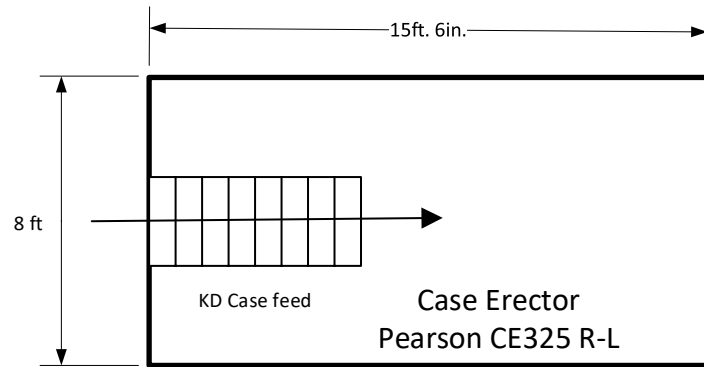


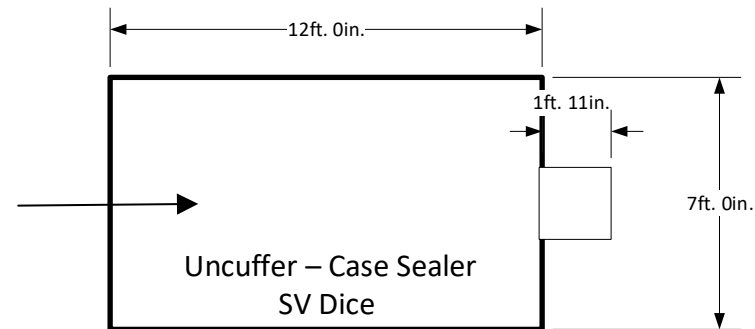
Cube Filling Line – Stainless Steel for Shortening or Margarine

For 25 pound to 50 pound boxes (12-25 kg)

Asset # 5976 view at www.s4mEquipment.com or see our brochure for details

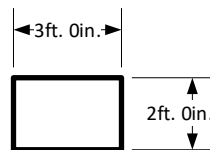


Case Filler Load Cell, 2 Head
Includes case coder



NOTES:

1. This filling line can be installed in a straight line, or a “U” type configuration, or an “L” shape, or an offset shape using the offset conveyor. You can configure it to fit your packaging floor layout
2. Interconnecting conveyors are included. These can be shortened or extended as needed for a good line fit in available space
3. Additional 45 degree offset conveyor included – approx 10 ft long
4. Allen Bradley Touch Screen controls are located on the filler. The free standing electrical panel can go anywhere there is space – size approx 6 ft wide x 2 ft deep
5. See next page for detailed AutoCad drawings of case erector & bag inserter

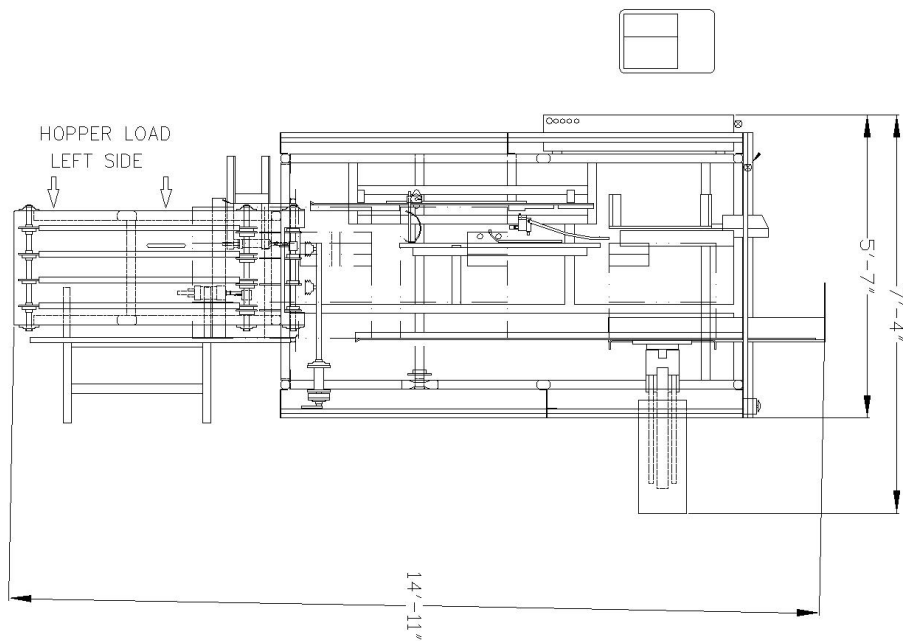


Quadrel Case Labeler
Can place anywhere after
case filler – on rollers

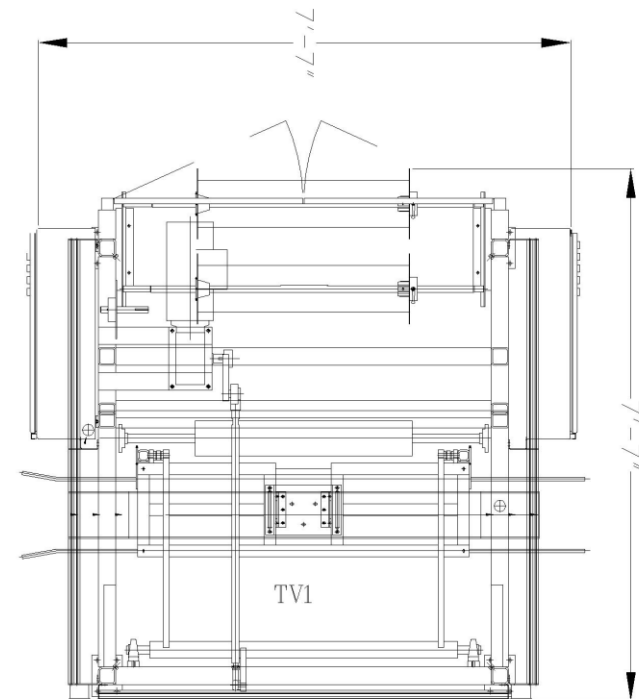
Cube Filling Line – Stainless Steel for Shortening or Margarine

For 25 pound to 50 pound boxes (12-25 kg)

Asset # 5976 view at www.s4mEquipment.com or see our brochure for details



Case Erector CE325
AutoCad



Bag Inserter
AutoCad