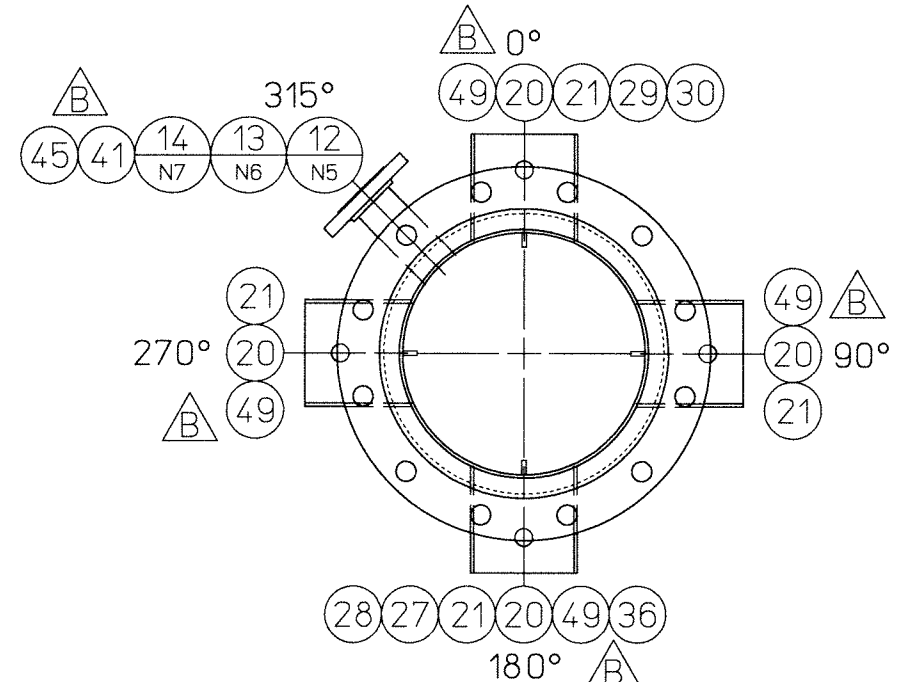


CUST NO.	ITEM NO.	NO. REQ'D	PART NO.	DESCRIPTION	DRAWING NO.
	37	1	H80W356208	HEAD STANDARD D & F 18.5"OD 12GA 304 S/S SA240 1'SF 2B/2B	
	38	A/R	9808680	INSULATION 2"THK CALCIUM MAGNESIUM-SILICATE THERMAL CERAMIC	NOTE 19
	39	A/R		INSULATION 2"THK FOAMGLASS	NOTE 19
	40	1	9822577	COLLAR ASME 1.5" 14MPW FAB 304 S/S 2'LG MADE FROM 2" SCH 40 PIPE	9000075B
	41	7	9822580	COLLAR ASME 2" PIPE 316L S/S 4'LG MADE FROM 2.5" SCH 40 PIPE	9000075B
	42			---DELETED---	9000075 B
	43	1	9850047	COLLAR ASME 6" 316L S/S 4'LG MADE FROM 14GA	9000075 B
	44	1	884W356208	ESCUTCHEON FLAT 16GA 304 S/S	
	45	7	885W356208	ESCUTCHEON FLAT 16GA 304 S/S	
	46			---DELETED---	
	47	1	886W356208	ESCUTCHEON FLAT 16GA 304 S/S	
	48	4	883W356208	ESCUTCHEON FLAT 16GA 304 S/S	
	49	4	882W356208	ESCUTCHEON FLAT 16GA 304 S/S	
	50	4	881W356208	ESCUTCHEON FLAT 16GA 304 S/S	

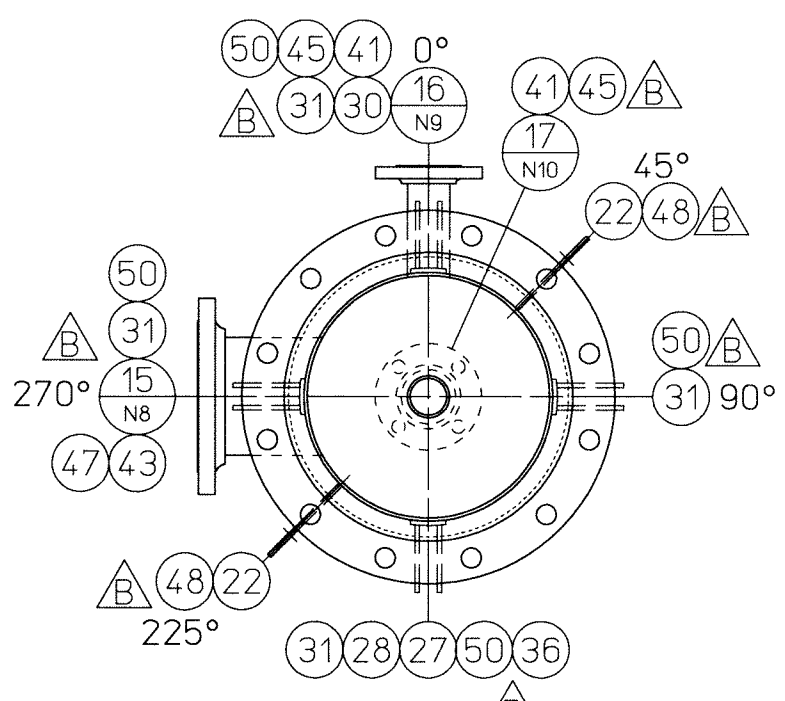
CUST NO.	ITEM NO.	NO. REQ'D	PART NO.	DESCRIPTION	DRAWING NO.
	1	1	V30	TANK ASSY 225 GALLON MODEL "F" COLUMN 304/304L S/S (C-601)	PC12855D
	1	1	H30W356208	HEAD ASSY TOP ASME F&D 7GA 304/304L S/S 14"OD 1.375"KR 1.5"SF	
	2	1	H65W356208	HEAD ASSY BOT ASME F&D 7GA 304/304L S/S 14"OD 1.375"KR 1.5"SF	
	3	1	S30W356208	SHELL 14" SCH10S PIPE 304/304L S/S 14"OD .188 WALL TOP SECTION	
	4	1	S40W356208	SHELL 14" SCH10S PIPE 304/304L S/S 14"OD .188 WALL MID SECTION	
	5	1	S60W356208	SHELL 14" SCH10S PIPE 304/304L S/S 14"OD .188 WALL LOWER SECTION	
	6	1	892W356208	RING MIST PAD SUPPORT .25"X2"X13.625"OD	DET E/PC13023
	7	4	9841947	FLANGE SLIP-ON 14" 150# RF 304/304L S/S CERTIFIED TO ASME SA182	
	N1	8	9852607	FLANGE SLIP-ON 3" W/EXT 8"OA 304L S/S 150# SCH 40 AS IS WELDS	
	N2	9	9829094	FLANGE SLIP-ON 2" W/EXT 8"OA 304L S/S 150# SCH 40 AS IS WELDS	
	N3	10	9829094	FLANGE SLIP-ON 2" W/EXT 8"OA 304L S/S 150# SCH 40 AS IS WELDS	
	N4	11	9852679	FLANGE SLIP-ON 1.5" W/EXT 8"OA 304L S/S 150# SCH 40 AS IS FINISH	
	N5	12	9829094	FLANGE SLIP-ON 2" W/EXT 8"OA 304L S/S 150# SCH 40 AS IS WELDS	
	N6	13	9829094	FLANGE SLIP-ON 2" W/EXT 8"OA 304L S/S 150# SCH 40 AS IS WELDS	
	N7	14	9829094	FLANGE SLIP-ON 2" W/EXT 8"OA 304L S/S 150# SCH 40 AS IS WELDS	
	N8	15	9852609	FLANGE SLIP-ON 6" W/EXT 8"OA 304L S/S 150# SCH 40 AS IS WELDS	
	N9	16	9829094	FLANGE SLIP-ON 2" W/EXT 8"OA 304L S/S 150# SCH 40 AS IS WELDS	
	N10	17	9829094	FLANGE SLIP-ON 2" W/EXT 8"OA 304L S/S 150# SCH 40 AS IS WELDS	
	18	2	891W356208	BAFFLE ENDS .25" 304/304L S/S	DET B&C/PC13023
	19	1	890W356208	BAFFLE WALL .25" 304/304L S/S 4.5" X 5.3125"	DET B/PC13023
	20	4	342W346942	SUPPORT CLIPS .25" 304L S/S .875"SQ	
	21	4	210W347957	LUG SIDE WALL MOUNT .1875 THK 304 S/S	DET A/PC13023
	22	4	9808589	LUG LIFTING SIDE .25"THK 304 S/S W/ 125" DIA HOLE	9000481B
	23	2	230W347957	BOLT PKG S/S HIGH STRENGTH CONSISTING OF: QTY (12) EACH SCREW CAP HH 1.0-BNC X 4.5"LG (005W193962) NUT (9804464) & LOCK WASHER (3200238)	
	24	2	007W347957	GASKET FLANGE FLEXITALLIC STYLE "O" SPIRAL WOUND 14" 150# 304/FLEXICARB WINDINGS C/S OUTER 304 INNER	
	25	1	250W356208	INSTRUCTION PKG SINGLE WALL TANKS	
	26	1	(REF) 9900380	ENVELOPE ASSY INSTRUCTION SINGLE WALL TANK	
	27	3	(REF) 3743	PLATE NAME "MUELLER" 304 S/S 9.5"X2.175"X 22GA THK	
	28	3	(REF) 9803082	PLATE DATA "MUELLER" 5.25"X3.75"X.003"THK FOIL	
	29	1		PERMANENT STAMPED SERIAL NUMBER	
	30	3	9851152	PLATE DATA "ASME" VESSEL&HTS 18-8 S/S 5.5"X4"X.048"THK ETCHED	
	31	4	889W356208	GUIDE SHOE ASSY .25"THK 304 S/S 10" X 3.25"	DET D/PC13023
	32	5	887W356208	RING BREAST SPECIAL 14"ID X 18.3125"OD 12GA 304L S/S 2B/2S	
	33	1	J40W356208	JACKET TOP 12GA 304 S/S	
	34	1	J50W356208	JACKET MIDDLE 12GA 304 S/S	
	35	1	J30W356208	JACKET BOT 12GA 304 S/S	
	36	3	9828988	VENT JACKET PLUG NYLON 6/6 PART #102000W BLACK	

NOTES:

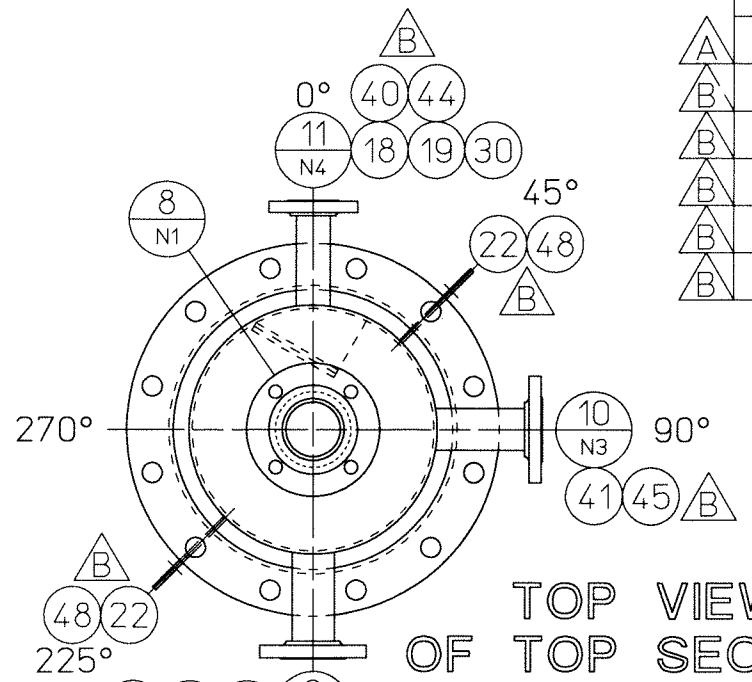
- ALL MATERIALS OR COMPONENT PARTS CALLED OUT ON THIS DRAWING SHALL BE AS SPECIFIED "OR APPROVED EQUAL."
- DIMENSIONS, UNLESS OTHERWISE INDICATED, ARE NOMINAL AND STANDARD SHOP TOLERANCES ARE TO BE EXPECTED. (ENP 222) MEASUREMENTS FOR ANY FIELD ATTACHMENTS SHOULD BE VERIFIED ON SITE BY OTHERS BEFORE FABRICATION OF THE ATTACHMENTS.
- CORROSION DISCLAIMER:** MUELLER FIELD OPERATIONS IS NOT RESPONSIBLE FOR CORROSION OR SUITABILITY FOR USE OF ANY MATERIAL IN ANY PARTICULAR APPLICATION. THE CORROSION RESISTANCE AND SUITABILITY FOR USE OF A MATERIAL IS DEPENDENT ON OPERATING ENVIRONMENT AND CONDITIONS, CLEANING PRACTICES, AND MANY OTHER FACTORS BEYOND THE CONTROL OF THE EQUIPMENT FABRICATOR. THE USER OF THE EQUIPMENT BEARS TOTAL RESPONSIBILITY FOR CORROSION OR SUITABILITY FOR USE OF ALL MATERIALS IN THEIR PARTICULAR APPLICATION.
- ALL FLANGES WILL HAVE BOLT HOLES STRADDLE THE 0°-180° & 90°-270° CENTER LINES, UNLESS SPECIFIED OTHERWISE.
- VESSEL TO BE VENTED FOR SHIPMENT.
- ALL DIMENSIONS ARE IN INCHES UNLESS SPECIFIED OTHERWISE.
- ALL WELD SIZES ARE MINIMUM AFTER GRINDING.
- CORROSION ALLOWANCE: 0 INCHES.
- PRODUCT SPECIFIC GRAVITY: 1 . .
- VESSEL DESIGNED FOR WIND LOAD: 90 MPH.
- VESSEL DESIGNED FOR SEISMIC ZONE: 0 . .
- CUSTOMER TO PROVIDE SUFFICIENT PIPE SUPPORT & PIPING EXPANSION JOINT TO PREVENT EXTERNAL NOZZLE LOADS.
- FOR DYE TEST REQUIREMENTS SEE ISO PROCEDURE ENG 103



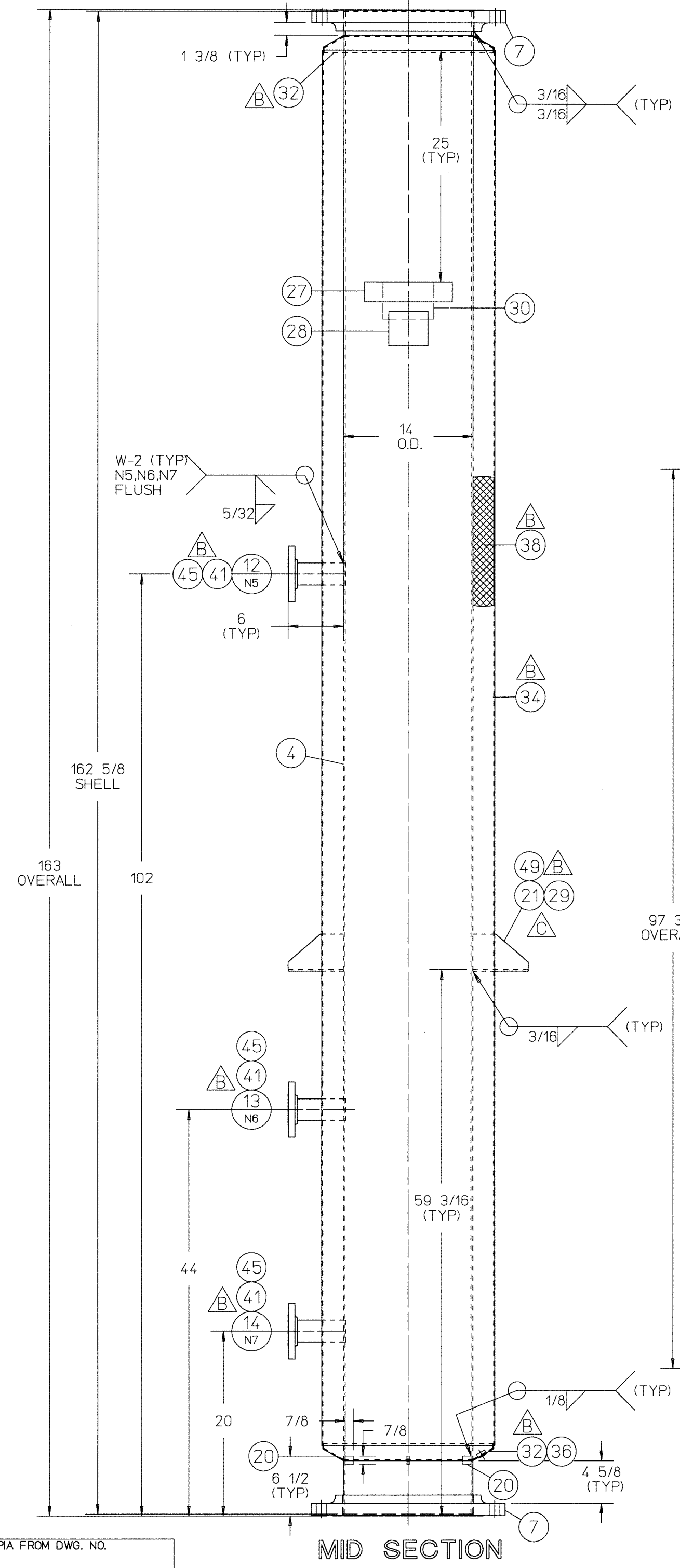
TOP VIEW OF MID SECTION



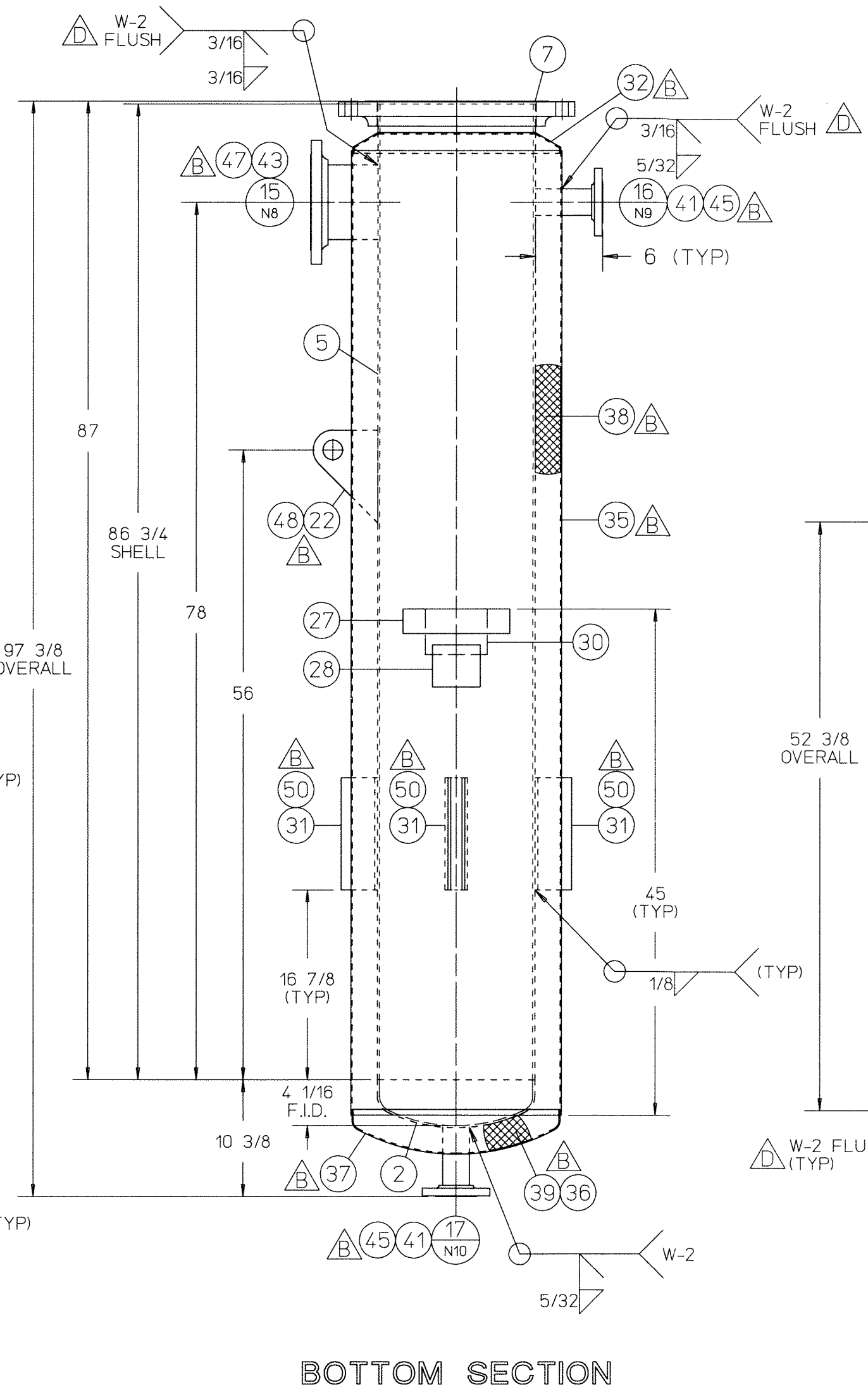
TOP VIEW OF BOTTOM SECTION



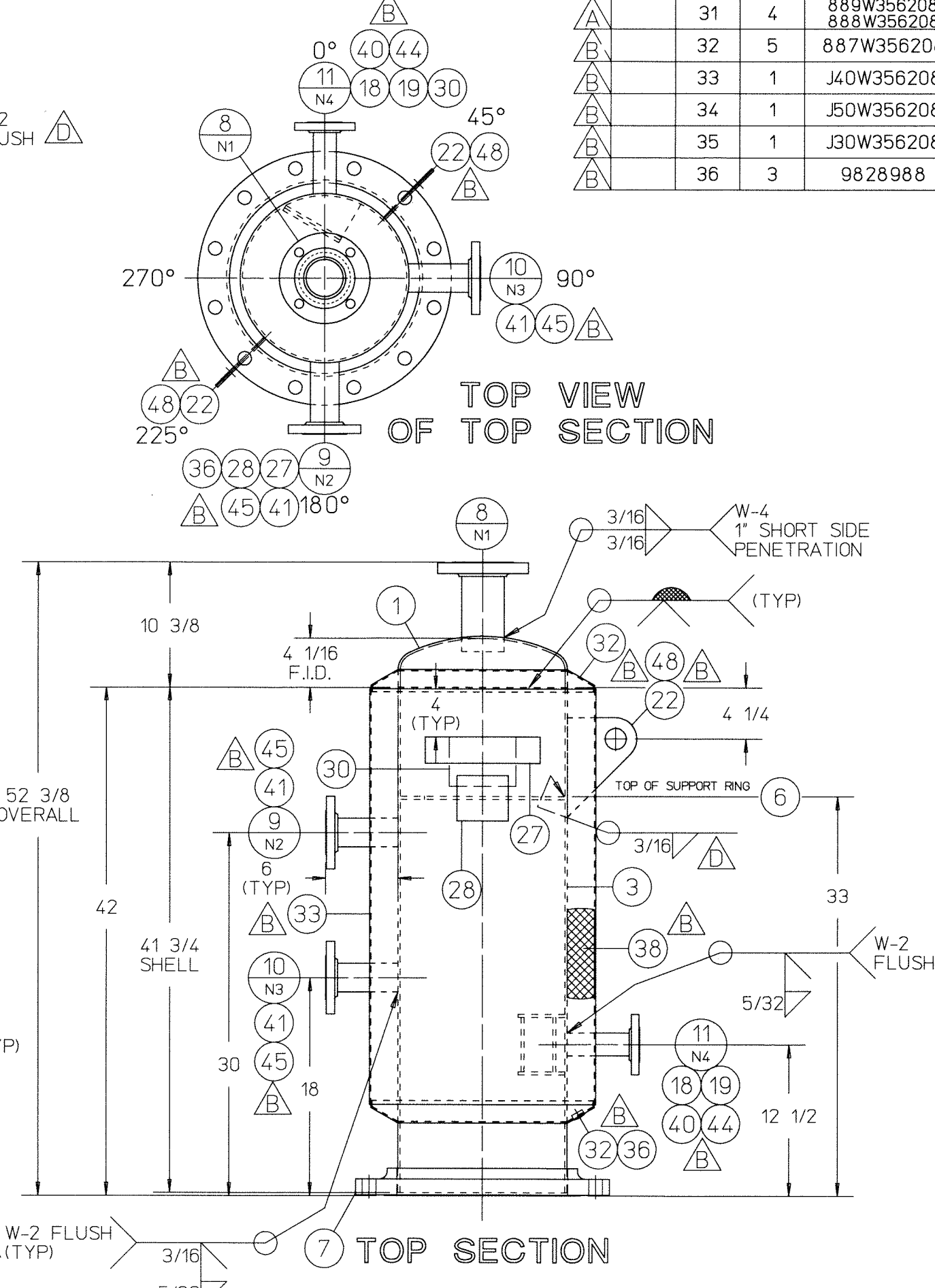
TOP VIEW OF TOP SECTION



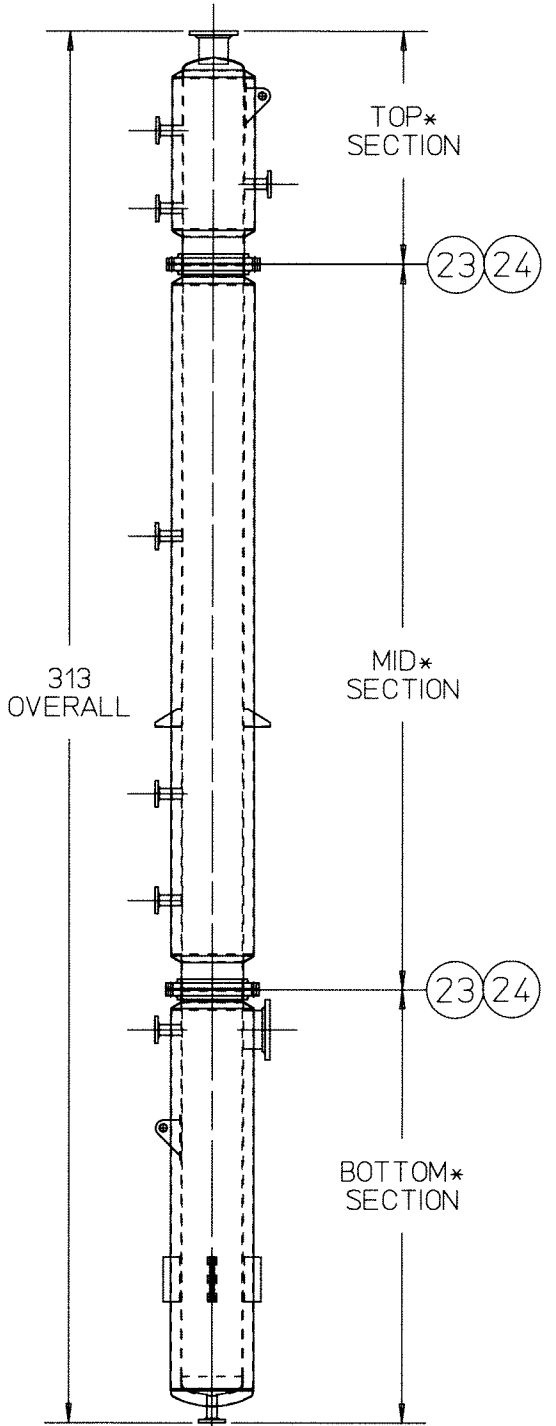
MID SECTION



BOTTOM SECTION



TOP SECTION



ASSEMBLY VIEW
MOF = 0.25

NOTES CONTD:

- ASME DATA PLATE "RT" MARKING PER UG116(e) WHEN APPLICABLE.
- MATERIAL SPECIFICATIONS FOR ASME: S/S SHEET PLATE (SA-240), C/S SHEET OR PLATE (SA-36), S/S ROD AND BAR (SA-479), C/S ROD AND BAR (SA-36), S/S PIPE (SA-312), C/S PIPE (SA-53) or SA-106-B, S/S TUBE (SA-213), C/S TUBE (SA-179), S/S BOLTS (SA-193 GR. B8), C/S BOLTS (SA-307 GR. B), S/S NUTS (SA-194 GR. 8), C/S NUTS (SA-194 GR. 2H), 316 S/S NUTS (SA-194 GR. 8M), S/S FORGINGS (SA-182), C/S FORGINGS (SA-181), (SA-105), S/S COUPLINGS (UG-111) OR SA-182.
- ASME CODE JURISDICTION ENDS AT THE FIRST SEALING SURFACE EXCLUDING MANWAY.
- ALL WELDING TO BE DONE BY ASME CERTIFIED WELDERS.
- SUITABLE PRESSURE AND/OR VACUUM RELIEF VALVE(S) MUST BE INSTALLED BY CUSTOMER FOR VESSEL OPERATION.
- FOAMGLASS IS TO BE USED ON BOTTOM HEAD AND BOTTOM 6" OF COLUMN. SUPERWOOL IN ALL OTHER LOCATIONS.

CERTIFIED CORRECT AND RELEASED FOR FABRICATION

FABRICATION WILL BE IN ACCORDANCE WITH THIS DRAWING. ANY FURTHER CHANGES WILL BE REVIEWED FOR COST AND DELIVERY ADJUSTMENTS.

PAUL MUELLER COMPANY

CERTIFIED BY PAUL MUELLER COMPANY VESSEL

DIV. 1 MAWP 50 P.S.I. at 450 °F
 MAEWP 15 P.S.I. at 450 °F
 MDMT -20 °F at 50 P.S.I.
 SERIAL NUMBER 357210 88-89
 YEAR BUILT 2006

HEAT TRANSFER SURFACE
 MAWP P.S.I. at °F
 MAEWP P.S.I. at °F
 MDMT °F at P.S.I.

MUELLER

MATERIAL FINISHES

INTERIOR AS IS EXTERIOR AS IS

WELD FINISHES

INDUSTRIAL AS IS
 EXTERIOR INDUSTRIAL AS IS HAND BRUSH

SPECIFICATIONS VESSEL

CODE ASME

RADIOGRAPHY

Top Head To Shell Shell Bottom Head To Shell Bottom Head To Shell

NONE NONE NONE NONE NONE

HEAT TRANSFER

CODE

RADIOGRAPHY

Top Head To Shell Shell Bottom Head To Shell Bottom Head To Shell

SIZE (GALLONS) - MODEL SERIAL NUMBER 357210 88-89

VESSEL INFORMATION

DESIGN PRESSURE 50 PSI DESIGN TEMP. 450 °F
 HYDRO TEST PRESSURE 72 PSI DESIGN VACUUM 15 PSI
 DESIGN PRESSURE HEAT TRANSFER INFORMATION
 TEST PRESSURE PSI VOLUME CU. FT.
 MEDIUM HEATING / COOLING C-601

EST. EMPTY WEIGHT - 3424 LBS

SCALE 1 1/8" = 12" (DO NOT SCALE THIS DRAWING)

DRAWN BY D. HUTCHISON DATE 08/16/06
 REVIEWED BY D. HUTCHISON DATE 08/18/06
 APPROVED BY L. O'CONNOR DATE 09/11/06

SOLD TO BIOSOURCE FUELS
 ADDRESS OKLAHOMA CITY
 CUSTOMER ORDER NO.

TITLE 14" PRIMARY GLYCERIN DISTILLATION COLUMN (C-601)
 QUANTITY TWO

This drawing and any print thereof is the property of MUELLER FIELD OPERATIONS, Springfield, Mo., and is subject to return on request of this company. The information shown is confidential and the recipient by accepting this drawing agrees not to use any information contained herein in any manner which will be detrimental to MUELLER FIELD OPERATIONS.

MUELLER FIELD OPERATIONS
 P.O. Box 828
 SPRINGFIELD, MO 65801-0828, U.S.A.

PMCO REFERENCE NO. 357210 88-89
 MFO SALES ORDER & SERIAL NO. 206014
 DRAWING NO. PC13297

LOC	DATE	DESCRIPTION	BY
E	08/06/07	REMOVED S/N 357210-90 AND MOVED TO DWG# PC135414**	DNH
D	11/22/06	ITEM 11 WAS 9852628** ITEM 40 WAS 9829006** ITEM 41 WAS 9823075** CHANGED WELD TYPES**	DNH
C	09/26/06	ITEM 21 WAS MODIFIED TO FIT OUTER JACKET**	TDM
B	09/21/06	ITEMS 32-50 WERE ADDED** ITEM 22 WAS 9808588	TDM
A	09/11/06	SHELL WAS SCH10S, 25 WALL** CHANGED GUIDE, ITEM 31 AND ADDED DETAIL D** ADDED HOLES TO ITEM 6 AND ADDED DETAIL E**	DLH

SYM.	CHANGE	BY	DATE
	REVISIONS		