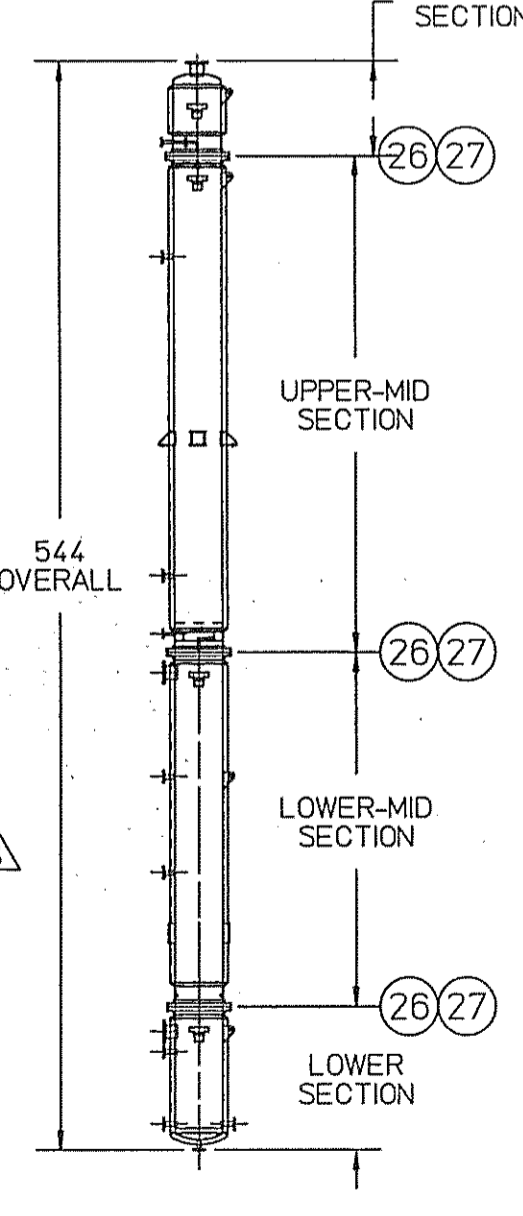
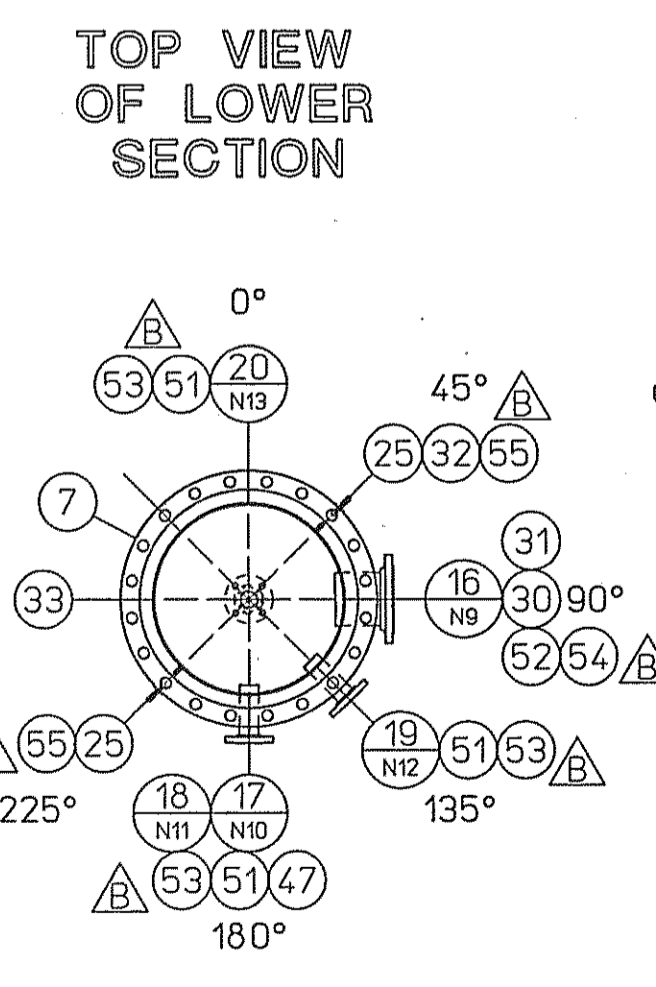
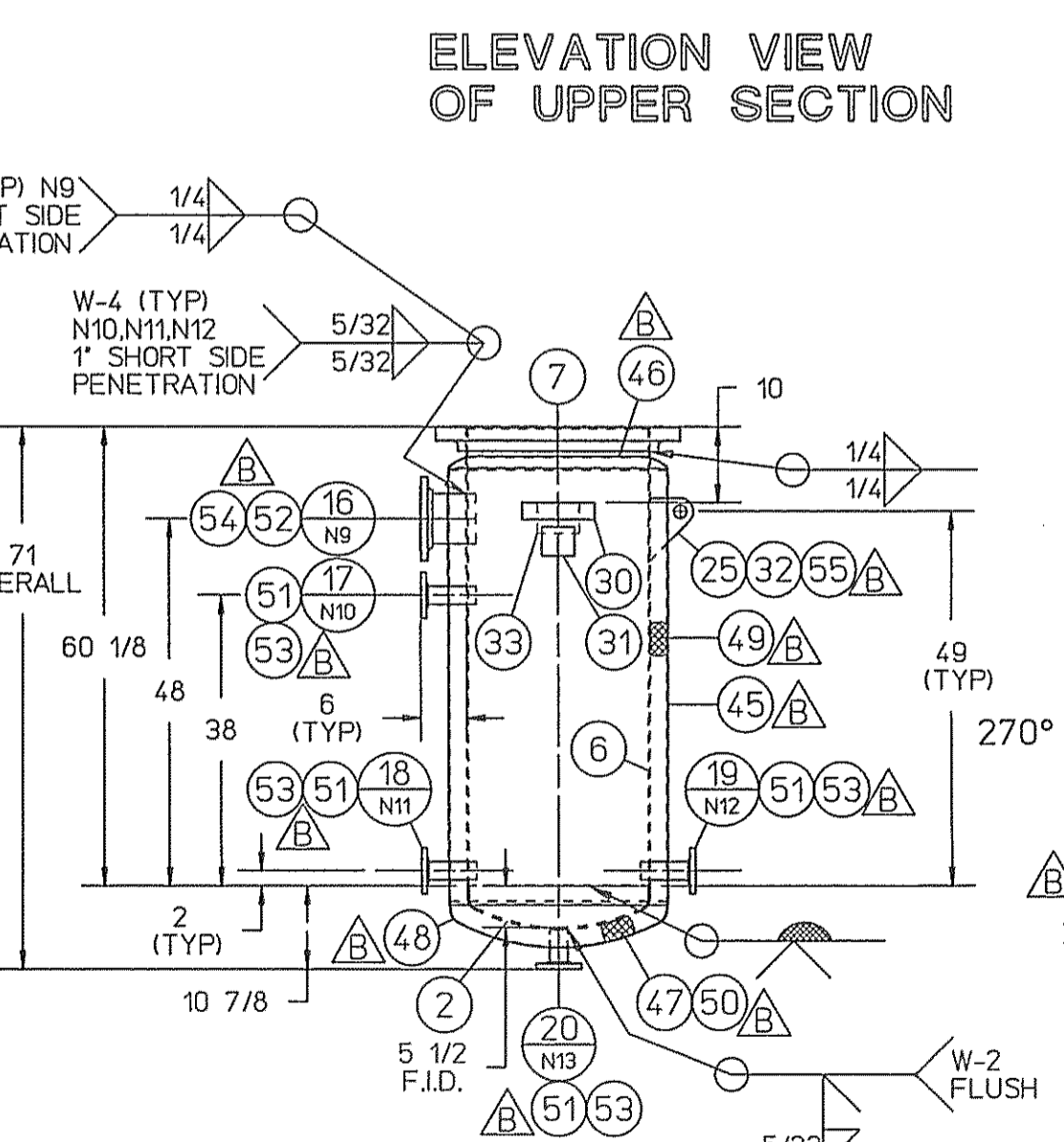
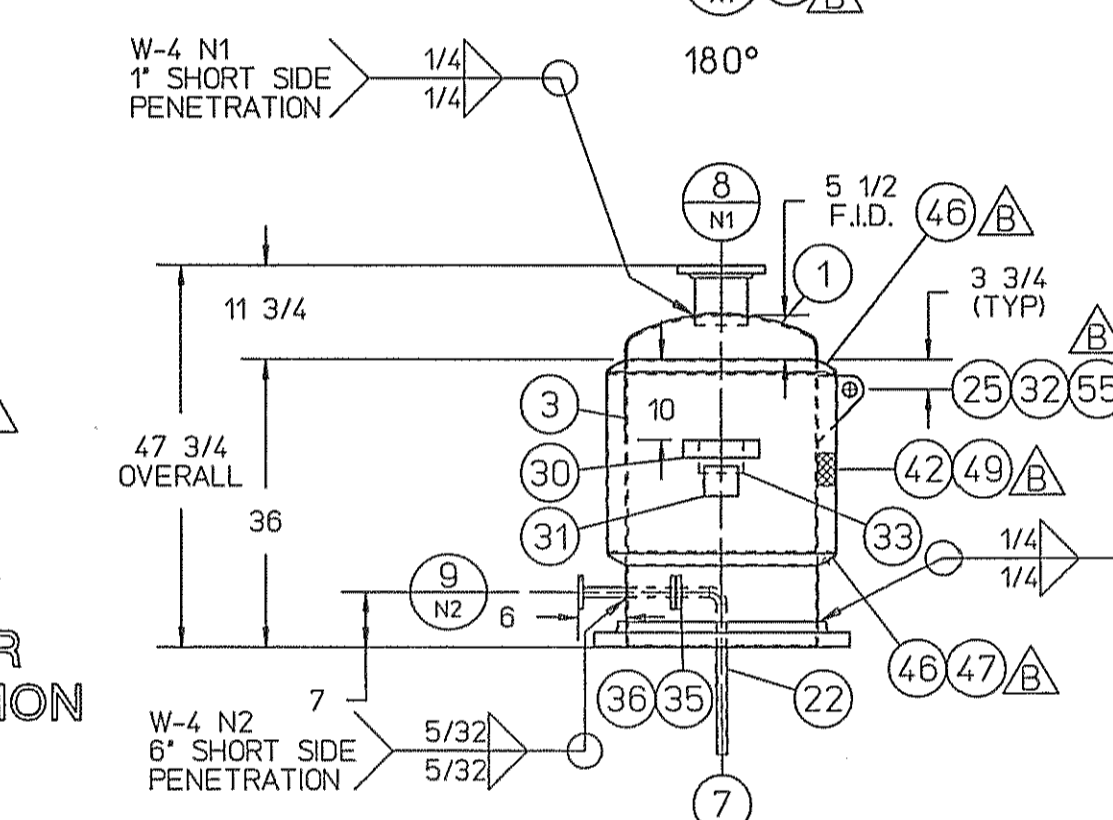
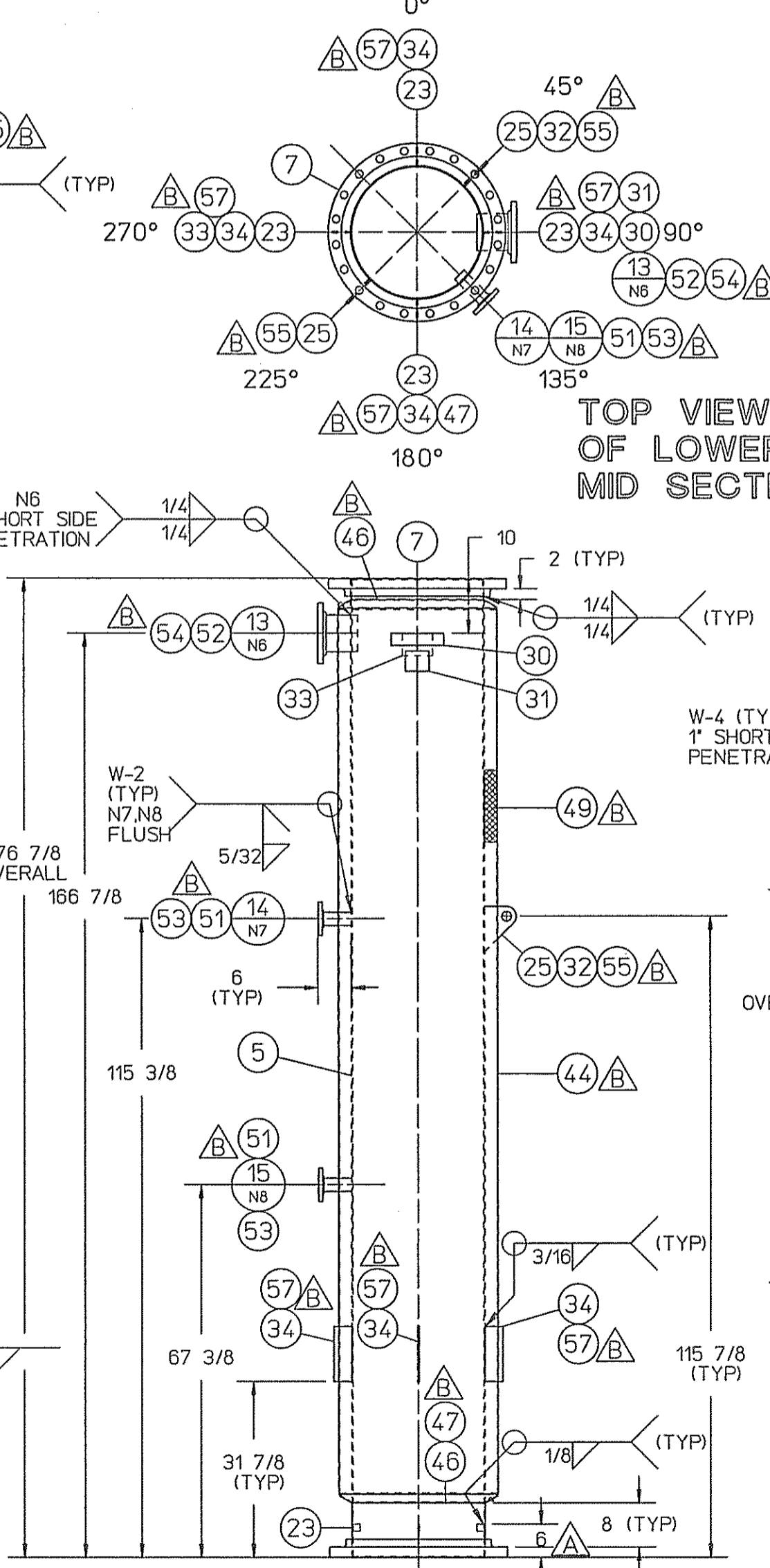
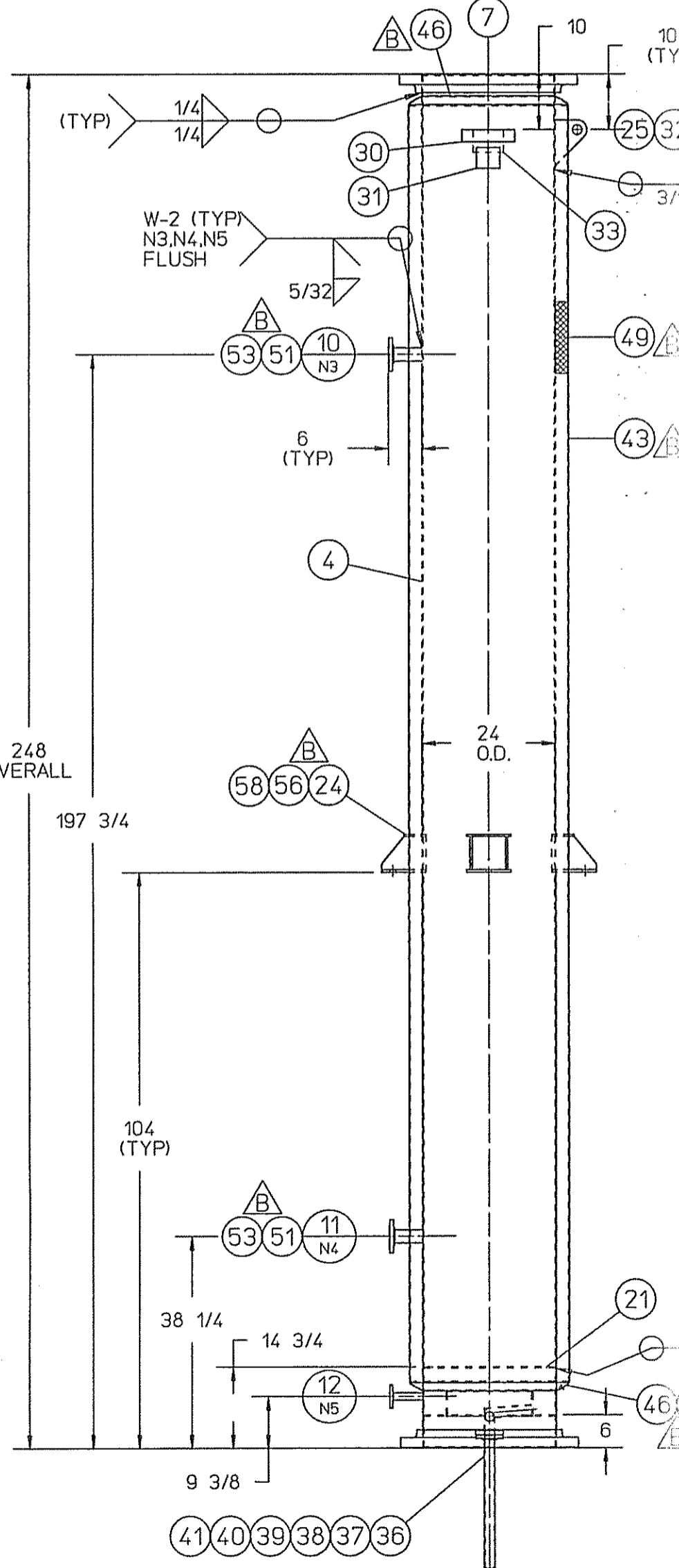
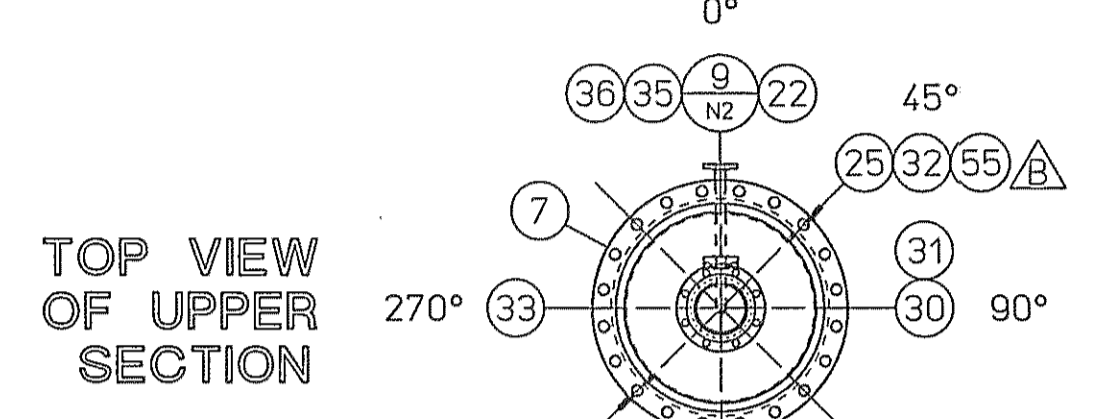
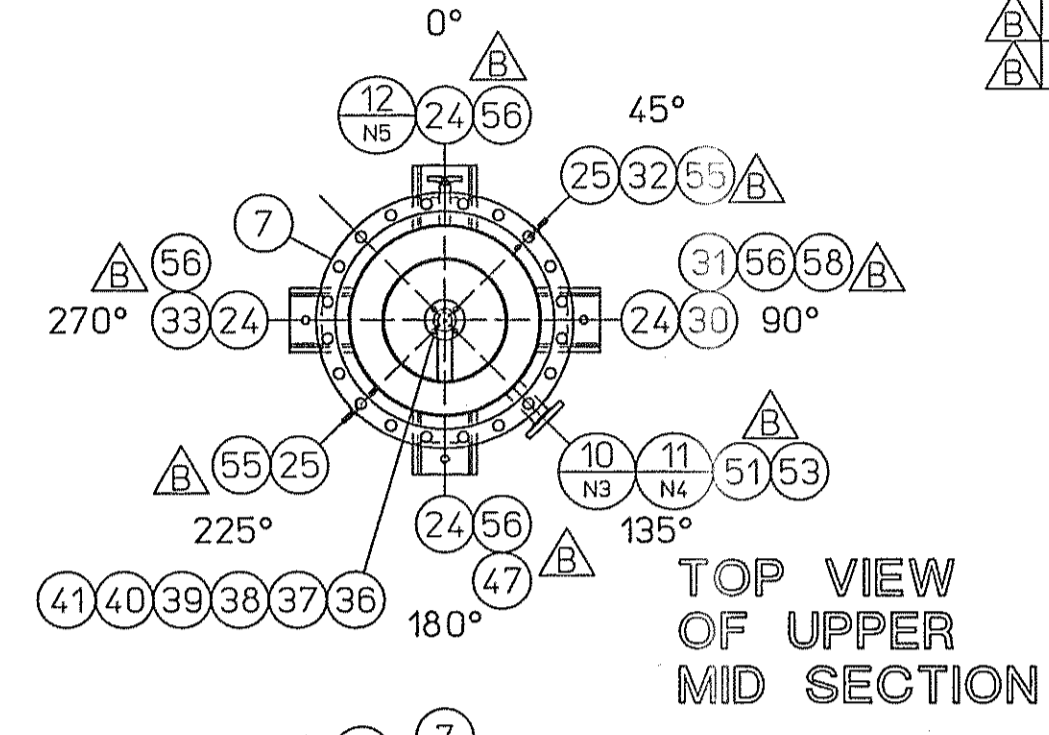


CUST NO.	ITEM NO.	NO. REQ'D	PART NO.	DESCRIPTION	DRAWING NO.
	43	1	843/J33	JACKET UPPER MIDDLE 12GA 304 S/S	
	44	1	844	JACKET LOWER MIDDLE 12GA 304 S/S	
	45	1	845	JACKET LOWER 12GA 304 S/S	
	46	7	757	BREAST RING 12GA 304L	
	47	4	9828988	VENT JACKET PLUG NYLON 6/6 PART #102000W BLACK	
	48	1	750	HEAD STANDARD D & F 28.5" OD 12GA 304 S/S SA240 1'SF 2B/2B	NOTE 19
	49	A/R	9808680	INSULATION 2"THK CALCIUM MAGNESIUM-SILICATE THERMAL CERAMIC	NOTE 19
	50	A/R		INSULATION 2"THK FOAMGLASS	NOTE 19
	51	8	9822580	COLLAR ASME 2" PIPE 316L S/S 4'LG MADE FROM 2.5" SCH 40 PIPE	9000075B
	52	2	9850047	COLLAR ASME 6" 316L S/S 4'LG MADE FROM 14GA	9000075 B
	53	8	749	ESCUTCHEON FLAT 2" 16GA 304 S/S	
	54	2	748	ESCUTCHEON FLAT 6" 16GA 304 S/S	
	55	8	745	ESCUTCHEON FLAT LIFTING LUG 16GA 304 S/S	
	56	4	746	ESCUTCHEON FLAT SIDE WALL MOUNT 16GA 304 S/S	
	57	4	744	ESCUTCHEON FLAT GUIDE SHOE 16GA 304 S/S	
	58	4	743	ESCUTCHEON CLOSURE PLATE 14 GA 304 S/S	

CUST NO.	ITEM NO.	NO. REQ'D	PART NO.	DESCRIPTION	DRAWING NO.
	1	1	V33	TANK ASSY MODEL "F" COLUMN 304/304L S/S (C-801)	PC12859 D
	1	1	H33W356208	HEAD ASSY TOP 24"OD ASME D&F .25"THK 304/304L S/S 1.5"KR 1.5"SF	
	2	1	H83W356208	HEAD ASSY BOT 24"OD ASME D&F .25"THK 304/304L S/S 1.5"KR 1.5"SF	
	3	1	S42W356208	SHELL 24" SCH5S PIPE 304/304L S/S 24"OD .218 WALL TOP SECTION	
	4	1	S41W356208	SHELL 24" SCH5S PIPE 304/304L S/S 24"OD .218 WALL UPPER MID SECTION	
	5	1	S43W356208	SHELL 24" SCH5S PIPE 304/304L S/S 24"OD .218 WALL LOWER MID SECTION	
	6	1	S44W356208	SHELL 24" SCH5S PIPE 304/304L S/S 24"OD .218 WALL BOTTOM SECTION	
	7	6	9827877	FLANGE SLIP-ON 24" 150# RF 304/304L S/S CERTIFIED TO ASME SA182	
N1	8	1	9852609	FLANGE SLIP-ON 6" W/EXT 8"OA 304L S/S 150# SCH 40 AS IS WELDS	
N2	9	1	F22W356208	FLANGE SLIP-ON 1" W/EXT 12.1875"OA FLANGE BOTH ENDS 304L S/S 150# SCH 40 AS IS WELDS	
N3	10	1	9829094	FLANGE SLIP-ON 2" W/EXT 8"OA 304L S/S 150# SCH 40 AS IS WELDS	
N4	11	1	9829094	FLANGE SLIP-ON 2" W/EXT 8"OA 304L S/S 150# SCH 40 AS IS WELDS	
N5	12	1	9852606	FLANGE SLIP-ON 1" W/EXT 8"OA 304L S/S 150# SCH 40 AS IS WELDS	
N6	13	1	9852609	FLANGE SLIP-ON 6" W/EXT 8"OA 304L S/S 150# SCH 40 AS IS WELDS	
N7	14	1	9829094	FLANGE SLIP-ON 2" W/EXT 8"OA 304L S/S 150# SCH 40 AS IS WELDS	
N8	15	1	9829094	FLANGE SLIP-ON 2" W/EXT 8"OA 304L S/S 150# SCH 40 AS IS WELDS	
N9	16	1	9852609	FLANGE SLIP-ON 6" W/EXT 8"OA 304L S/S 150# SCH 40 AS IS WELDS	
N10	17	1	9829094	FLANGE SLIP-ON 2" W/EXT 8"OA 304L S/S 150# SCH 40 AS IS WELDS	
N11	18	1	9829094	FLANGE SLIP-ON 2" W/EXT 8"OA 304L S/S 150# SCH 40 AS IS WELDS	
N12	19	1	9829094	FLANGE SLIP-ON 2" W/EXT 8"OA 304L S/S 150# SCH 40 AS IS WELDS	
N13	20	1	9829094	FLANGE SLIP-ON 2" W/EXT 8"OA 304L S/S 150# SCH 40 AS IS WELDS	
	21	1	R21W356208	RING SUPPORT .25"	
	22	1	(REF)	FLANGE SLIP-ON 1" W/EXT & ELBOW 20.5"CL-FACE 304L S/S 150# SCH 40 AS IS WELDS	
	23	4	C23W356208	SUPPORT CLIPS .25" 304L S/S 1.25"SQ	
	24	4	752	LUG SIDE WALL MOUNT 5" BASE .375" TOP AND GUSSETS 304 S/S	DET A/PC13024
	25	8	751	LUG LIFTING ASSY SIDE 5"THK 304 S/S	
	26	3	9829982	BOLT PKG S/S HIGH STRENGTH CONSISTING OF: QTY (20) EACH SCREW CAP HH 1.25-8NC X 6.5"LG (9829971) NUT (9829984) & LOCK WASHER (9829972)	
	27	3	O17W356208	GASKET FLANGE FLEXITALLIC STYLE "CGI" SPIRAL WOUND 24" 150# 304/FLEXICARB WINDINGS C/S OUTER 304 INNER	
	28	1	228W356208	INSTRUCTION PKG SINGLE WALL TANKS	
	29	1	(REF)	ENVELOPE ASSY INSTRUCTION SINGLE WALL TANK	
	30	4	(REF) 3743	PLATE NAME "MUELLER" 304 S/S 9.5"X2.175"X .226A THK	
	31	4	(REF) 9803082	PLATE DATA "MUELLER" 5.25"X3.75"X.003"THK FOL	
	32	4		PERMANENT STAMPED SERIAL NUMBER	
	33	4	9851152	PLATE DATA "ASME" VESSEL&HTS 18-8 S/S 5.5"X4"X.048"THK ETCHED	
	34	4	G34W356208	GUIDE SHOE ASSY .25"THK 10" TALL X 3.25"WIDE 304 S/S	
	35	1	9852589	GASKET FLANGE 1" .125"THK SILICON 1.375"ID X 2"OD	
	36	2	9851112	BOLT PKG FOR 1"-1.5" 150# FLG S/S LOW STRENGTH	
	37	1	R37W356208	RING CHANNEL .25" PL 304/304L S/S 23.5625"OD 15.625" ID	DET B/PC13024
	38	1	R38W356208	WALL CHANNEL 15.625"OD ROLLED .25"THK 304L S/S 4.5"LG	DET B/PC13024
	39	1	F39W356208	DOWNSIDE ASSY W/ FLANGE 150# RF 50 1.5" SCH40 304/304L S/S MITERED	DET B/PC13024
	40	1	(REF)	FLANGE SLIP-ON 1.5" W/EXT 26"OA 304L S/S 150# SCH 40 AS IS WELDS	DET B/PC13024
	41	1	G41W356208	GASKET FLANGE 1.5" .125"THK SILICON 150# RF	
	42	1	842	JACKET TOP 12GA 304 S/S	

NOTES:

- ALL MATERIALS OR COMPONENT PARTS CALLED OUT ON THIS DRAWING SHALL BE AS SPECIFIED "OR APPROVED EQUAL."
- DIMENSIONS, UNLESS OTHERWISE INDICATED, ARE NOMINAL AND STANDARD SHOP TOLERANCES ARE TO BE EXPECTED. (ENFP 222) MEASUREMENTS FOR ANY FIELD ATTACHMENTS SHOULD BE VERIFIED ON SITE BY OTHERS BEFORE FABRICATION OF THE ATTACHMENTS.
- CORROSION DISCLAIMER**
MUELLER FIELD OPERATIONS IS NOT RESPONSIBLE FOR CORROSION OR SUITABILITY FOR USE OF ANY MATERIAL IN ANY PARTICULAR APPLICATION. THE CORROSION RESISTANCE AND SUITABILITY FOR USE OF A MATERIAL IS DEPENDENT ON OPERATING ENVIRONMENT AND CONDITIONS, CLEANING PRACTICES, AND MANY OTHER FACTORS BEYOND THE CONTROL OF THE EQUIPMENT FABRICATOR. THE USER OF THE EQUIPMENT BEARS TOTAL RESPONSIBILITY FOR CORROSION OR SUITABILITY FOR USE OF ALL MATERIALS IN THEIR PARTICULAR APPLICATION.
- ALL FLANGES WILL HAVE BOLT HOLES STRADDLE THE 0°-180° & 90°-270° CENTER LINES, UNLESS SPECIFIED OTHERWISE.
- VESSEL TO BE VENTED FOR SHIPMENT.
- ALL DIMENSIONS ARE IN INCHES UNLESS SPECIFIED OTHERWISE.
- ALL WELD SIZES ARE MINIMUM AFTER GRINDING.
- CORROSION ALLOWANCE: 0 INCHES.
- PRODUCT SPECIFIC GRAVITY: 1.
- VESSEL DESIGNED FOR WIND LOAD: 90 MPH.
- VESSEL DESIGNED FOR SEISMIC ZONE: 0
- CUSTOMER TO PROVIDE SUFFICIENT PIPE SUPPORT & PIPING EXPANSION JOINT TO PREVENT EXTERNAL NOZZLE LOADS.
- FOR DYE TEST REQUIREMENTS SEE ISO PROCEDURE ENG 103



NOTES CONTD:

- ASME DATA PLATE "RT" MARKING PER UG110(c) WHEN APPLICABLE.
- MATERIAL SPECIFICATIONS FOR ASME: S/S SHEET PLATE (SA-240), C/S SHEET OR PLATE (SA-36) S/S ROD AND BAR (SA-479), C/S ROD AND BAR (SA-3B) S/S PIPE (SA-312), C/S PIPE (SA-53) or SA-106-B S/S TUBE (SA-213), C/S TUBE (SA-179) S/S BOLTS (SA-193 GR. B8), C/S BOLTS (SA-307 GR. B) S/S NUTS (SA-194 GR. B), C/S NUTS (SA-194 GR. 2H) 316 S/S NUTS (SA-194 GR. 8M) S/S FORGINGS (SA-182), C/S FORGINGS (SA-181), (SA-105) S/S COUPLINGS (UG-111) OR SA-182
- ASME CODE JURISDICTION ENDS AT THE FIRST SEALING SURFACE EXCLUDING MANWAY.
- ALL WELDING TO BE DONE BY ASME CERTIFIED WELDERS.
- SUITABLE PRESSURE AND/OR VACUUM RELIEF VALVE(S) MUST BE INSTALLED BY CUSTOMER FOR VESSEL OPERATION.
- FOAMGLASS IS TO BE USED ON BOTTOM HEAD AND BOTTOM 6" OF COLUMN. SUPERWOOL IN ALL OTHER LOCATIONS
- SEE DRAWING #PC13024 FOR GEN DETAILS.

CERTIFIED CORRECT AND RELEASED FOR FABRICATION

 FABRICATION WILL BE IN ACCORDANCE WITH THIS DRAWING. ANY FURTHER CHANGES WILL BE REVIEWED FOR COST AND DELIVERY ADJUSTMENTS.

 PAUL MUELLER COMPANY

CERTIFIED BY
PAUL MUELLER COMPANY
VESSEL

Div. 1 MAWP 40 P.S.I. at 250 °F
 MAEWP 75 P.S.I. at 250 °F
 MDMT -20 °F at 40 P.S.I.

SERIAL NUMBER 357209 97-99
 YEAR BUILT 2006
 HEAT TRANSFER SURFACE
 MAWP P.S.I. at °F
 MAEWP P.S.I. at °F
 MDMT °F at P.S.I.

MATERIAL FINISHES

INTERIOR	AS IS	EXTERIOR	AS IS
----------	-------	----------	-------

WELD FINISHES

INTERIOR	INDUSTRIAL AS IS
EXTERIOR	INDUSTRIAL AS IS HAND BRUSH

SPECIFICATIONS VESSEL

CODE ASME
 RADIOGRAPHY
 Top Head Top To Shell Shell Bottom Head Bottom Head To Shell
 NONE NONE NONE NONE NONE

HEAT TRANSFER CODE
 RADIOGRAPHY
 Top Head Top To Shell Shell Bottom Head Bottom Head To Shell
 NONE NONE NONE NONE NONE

SIZE (GALLONS) - MODEL SERIAL NUMBER
 357209 97-99

DESIGN INFORMATION

DESIGN PRESSURE	40	DESIGN TEMP.	250
HYDRO TEST PRESSURE	52	DESIGN VACUUM	7.5
DESIGN PRESSURE		DESIGN TEMP.	
TEST PRESSURE		VOLUME	

MEDIUM HEATING / COOLING C-801

EST. EMPTY WEIGHT 6,116 LBS

SCALE 1/2" = 12" (DO NOT SCALE THIS DRAWING)

DRAWN BY D. POWELL	DATE 09/05/06
REVIEWED BY D. HUTCHISON	DATE 09/07/06
REVIEWED BY	DATE
APPROVED BY L. O'CONNOR	DATE 09/21/06

SOLD TO BIOSOURCE FUELS
 ADDRESS CATOOSA, OK
 CUSTOMER ORDER NO.
 TITLE 24" METHANOL DISTILLATION COLUMN (C-801)
 QUANTITY THREE

This drawing and any print thereof is the property of MUELLER FIELD OPERATIONS, Springfield, Mo., and is subject to return on request of the company. The information shown is confidential and the recipient by accepting this drawing agrees not to use any information contained therein in any manner which will be detrimental to MUELLER FIELD OPERATIONS.

MUELLER FIELD OPERATIONS
 P.O. BOX 628
 SPRINGFIELD, MO 65801-0628, U.S.A.

PMCO REFERENCE NO. 357209 97-99
 MFO SALES ORDER & SERIAL NO. 206013 DRAWING NO. PC13262 D

SEPIA FROM DWG. NO. PC12856

REV.	DESCRIPTION	DATE
A	ITEM 23 WAS AT 4 5/8" ITEM 40 WAS 24.125"	09/15/06
B	ADDED ITEMS 72-87** DELETED REPAD	09/22/06
C	ADDED INSULATION NOTE #19**	10/11/06
D	ITEM 43 WAS J43** ITEMS 55&56 P/N'S WERE REVERSED**	11/09/06

LOC 09/21/06
 LCC 10/03/06
 SM 11/22/06

LOC 09/21/06

REVISIONS