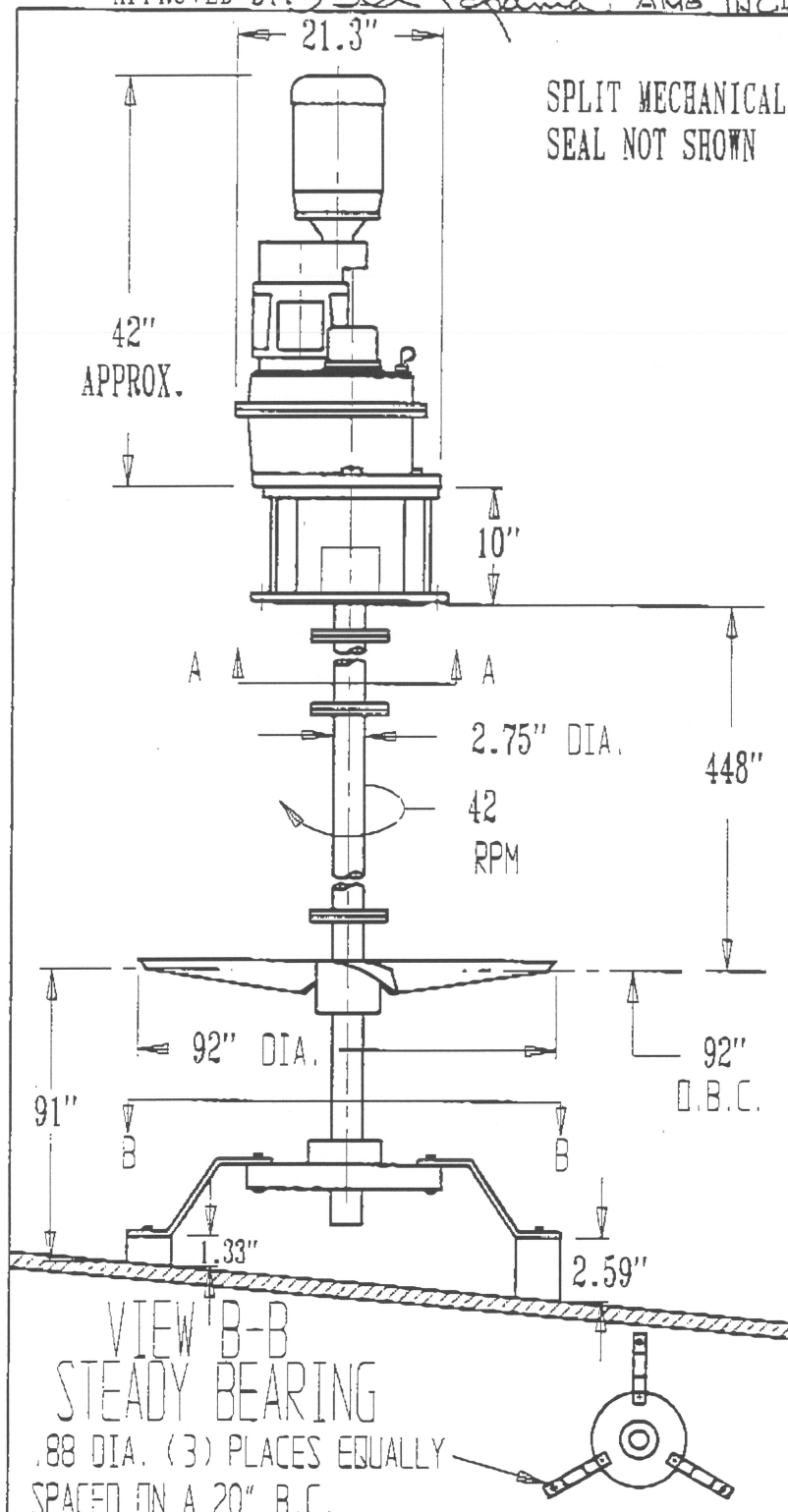
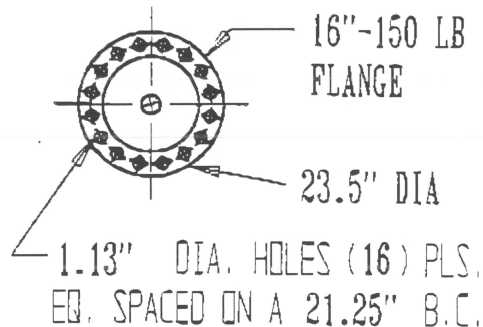


APPROVED BY: *DL Paganini* AMG INC. DATE: *6.30.95*VIEW A-A
MOUNTING DETAIL

-MOTOR DATA-

HP: 10 RPM: 1800
 VOLTS: 230/460 PHASE: 3
 CYCLE: 60 TYPE: TE-XP
 FRAME: 215TC

-IMPELLER DATA-

UPPER: TYPE N/A DIA.
 NOTE:
 LOWER: TYPE FOIL DIA. 92"
 STABILIZERS: YES NO X
 NOTE:

-ENGINEERING DATA-

TORQUE: 11,432 IN-LBS.
 BENDING MOMENT: 0 IN-LBS.
 VERTICAL LOAD DOWN: 2100 LBS.

CUSTOMER DATA:

CUSTOMER: ACP
 CERT. BY: KL Bully
 P.O. NO.: DT141018
 TAG NO.: 1400 / 1405
 QUANTITY: TWO



UNITED EQUIPMENT TECHNOLOGIES CORP.
 60 BUCKLEY CIRCLE
 MANCHESTER, NH 03109

XCEL-22 CLOSED TANK MIXER

MATERIAL, WETTED PARTS: 304 S.S.

SHEET 1 OF 1

SIZE A

DWG. NO.

C1641-7B

REV

B