

CERTIFIED BY
SPECIALTY PROCESS FABRICATORS, INC

SHELL MAWP: 87 PSIG AT 200 °F

SHELL MAEP: 2.5 PSIG AT 200 °F

SHELL MDMT: -5 °F AT 87 PSIG

SERIAL: XX YEAR BUILT: 2007

Specfab SPECIALTY PROCESS FABRICATORS, INC. VICKSBURG, MS 39183

MARK NO.	SERVICE	SIZE	RATING	TYPE	MATERIAL	WALL	NECK	MAT'L	THK. X WD.	MAT'L	O.S.	WELD DETAIL	WELD SIZE	NOTES		
SD 1	SHORT OPENING	8"			SEE DTL.											
SH 1	SHORT ACCESS	24"			SEE DTL.											
SV 2	SHORT NUTS	2"			SEE DTL.											
N 1	SPARE	2"	150#	RFSD	SA-182-F304	S/40#			6"	FLUSH	N	M	3/16 1/4	W/ BLD. GASKET & BOLTING ***		
M 1	SPARE	2"	150#	RFSD	SA-182-F304	S/40#			6"	FLUSH	N	M	3/16 1/4	W/ BLD. GASKET & BOLTING ***		
L 1	PACKING DUMP	12"	150#	RFSD	SA-182-F304	S/40#			6"	FLUSH	N	M	3/8 1/2 3/16	W/ BLD. GASKET & BOLTING **		
K 1	N	3/4"	3000#	NULF CPLG.	SA-182-F304											
J1/2	PT. IN	1/2"	3000#	NULF CPLG.	SA-182-F304											
H 1	WATER INLET	3"	150#	RFSD	SA-182-F304	S/40#	SEE DTL.	RETAIN SHF # 2								
G 1	WATER OUTLET	3"	150#	RFSD	SA-182-F304	S/40#	SEE DTL.	RETAIN SHF # 2								
F1/2	SHORT GLASS	3"	150#	RFSD	SA-182-F304	S/40#			6"	FLUSH	N	M	3/16 1/4			
E1/2	LEVEL TRANSMITTER	3"	150#	RFSD	SA-182-F304	S/40#			6"	FLUSH	N	M	3/16 1/4			
D 1	CO2 INLET	2"	150#	RFSD	SA-182-F304	S/40#			6"	FLUSH	N	M	3/8 1/4			
C 1	CO2 INLET	24"	150#	RFSD	SA-182-F304	S/20	SEE DTL.	SA-312-TP304	3/8" x 2"	SA-240-304	6"	FLUSH	N	M	3/8 3/8 3/16	
B 1	CO2 OUTLET	24"	150#	RFSD	SA-182-F304	S/20	SEE DTL.	SA-312-TP304	1/4" x 2"	SA-240-304	6"	FLUSH	N	M	3/8 3/8 3/16	
A2 1	MANWAY	24"	150#	RFSD	SA-182-F304	S/20			3/8" x 2"	SA-240-304	6"	FLUSH	N	M	3/8 3/8 3/16	W/ BLD. GASKET, BOLTING & DMT *
A1 1	MANWAY	24"	150#	RFSD	SA-182-F304	S/20			3/8" x 2"	SA-240-304	6"	FLUSH	N	M	3/8 3/8 3/16	W/ BLD. GASKET, BOLTING & DMT *

REFERENCE DRAWINGS

NO.	DESCRIPTION	BY	CHK.	DATE
B	ISSUED FOR APPROVAL	JSL	JSL	
D	ISSUED FOR CONSTRUCTION	JSL	JSL	7/28/07

NOTICE

THIS DRAWING IS THE PROPERTY OF EROGON, INC. OR ONE OF ITS AFFILIATED COMPANIES (UNION), NO COPIES OR REPRODUCTION OF THIS DRAWING SHALL BE MADE, IN WHOLE OR IN PART, NOR INFORMATION THEREON PUBLISHED OR USED OTHER THAN AS SPECIFICALLY AUTHORIZED BY EROGON IN WRITING. ALL COPIES ARE TO BE RETURNED ON REQUEST OF EROGON.

DESCRIPTION: 60" I.D. x 31'-11" SEAM / SEAM
PRIMARY CO2 SCRUBBER
ITEM NO.: C3201
Job # 2007111

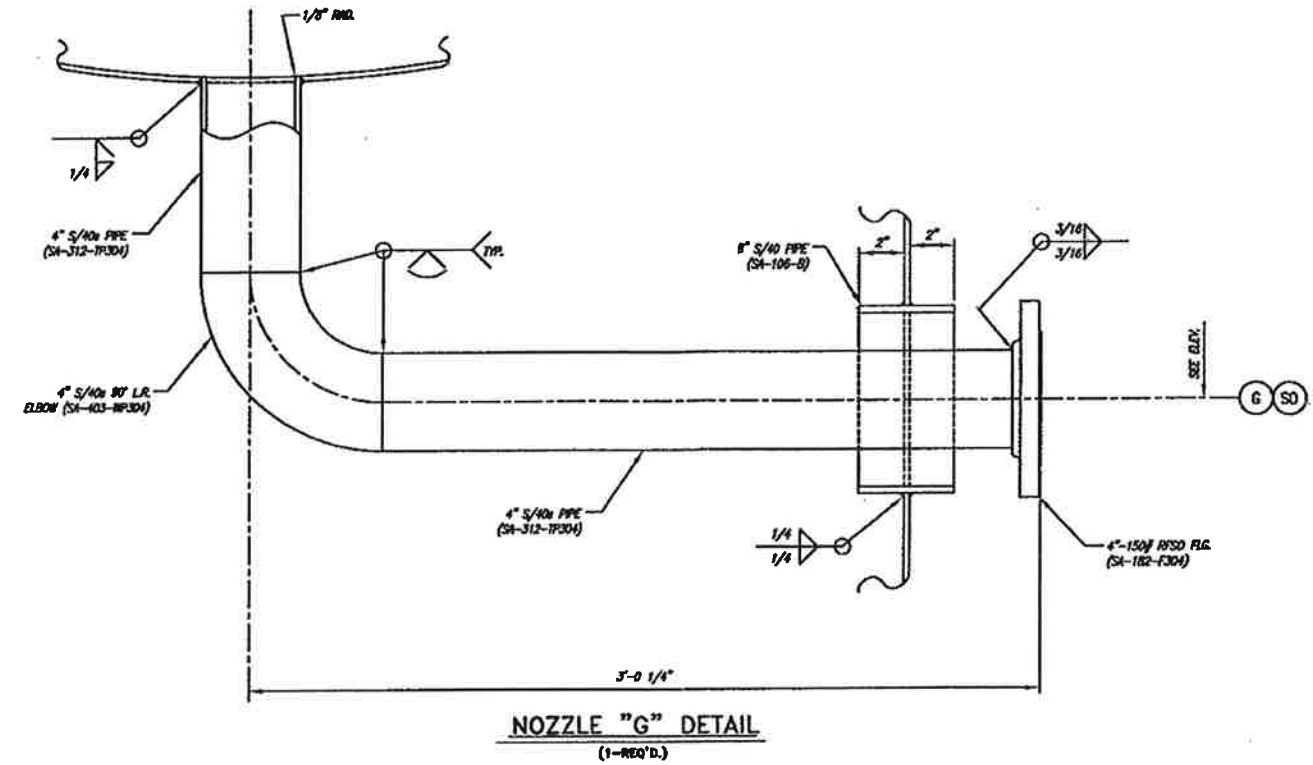
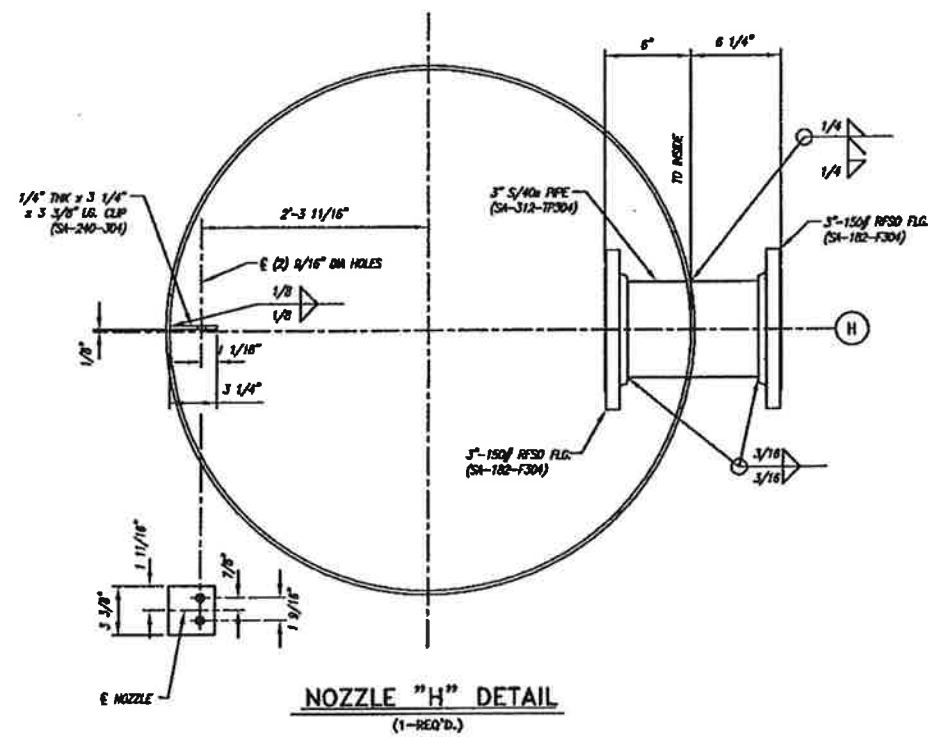
CUSTOMER: BUNGE-ERGON VICKSBURG VICKSBURG, MS.

SCALE: N.T.S. DATE: 2/11/07 P.O. No.: 61310-450014663

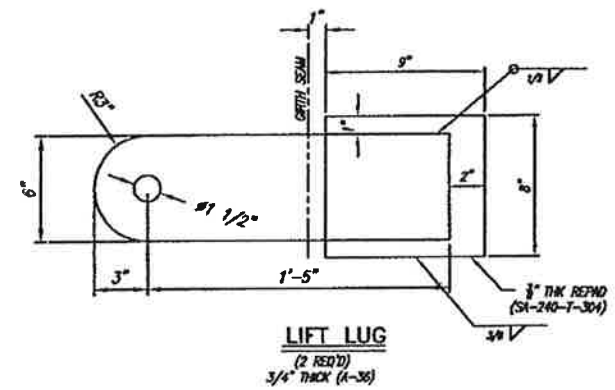
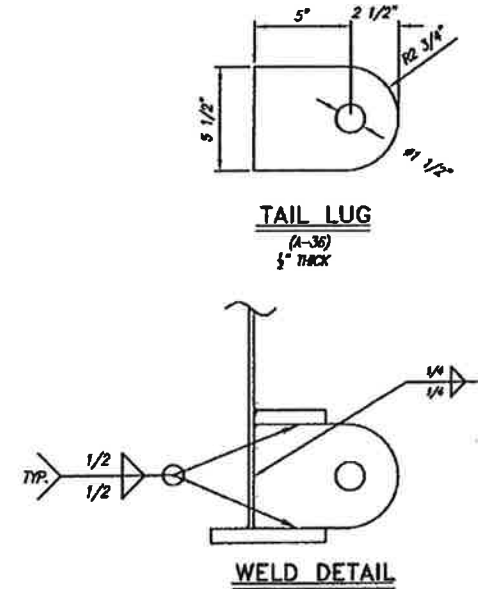
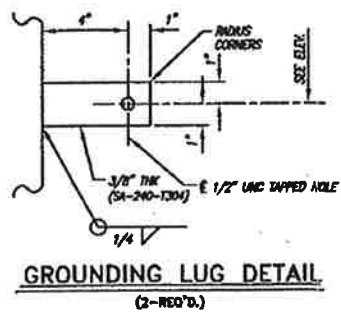
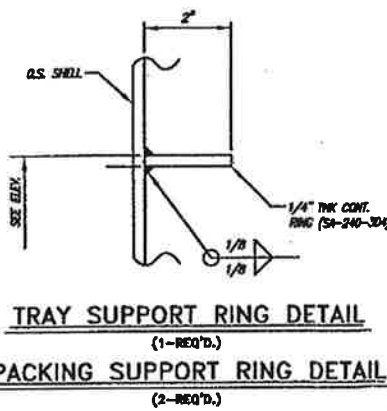
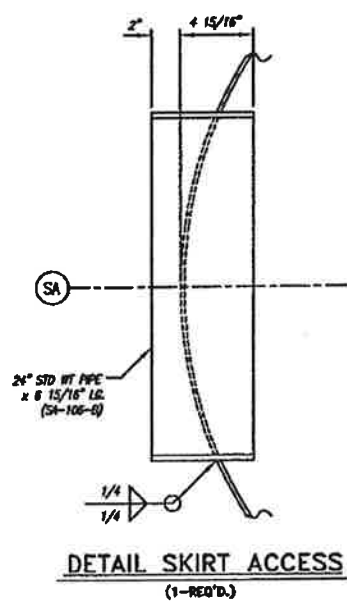
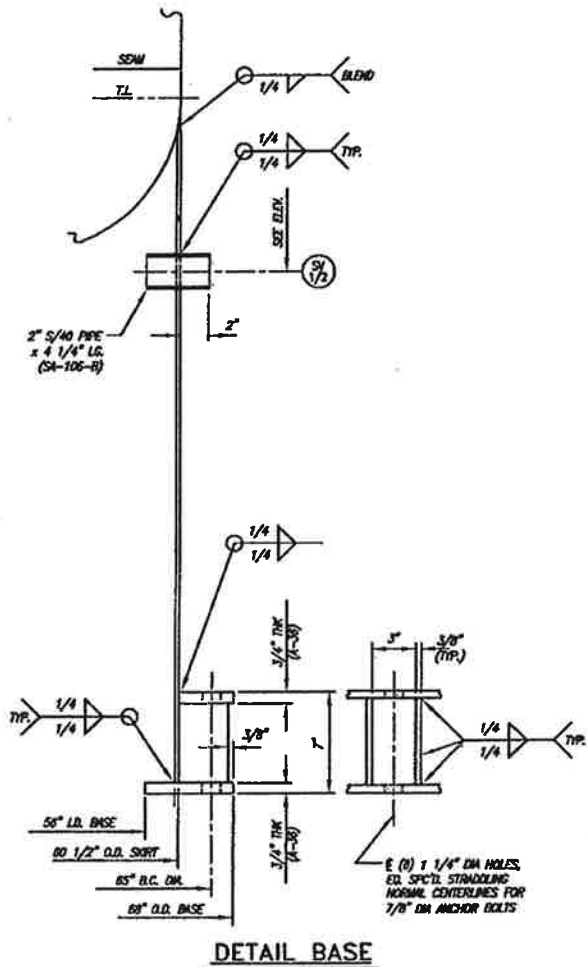
DRAWN BY: JSL FILE No.: 2007111

CHECK BY: JSL DATE: 2/15/07 DWG. NO.: V-074-102 SHEET NO.: 1 OF 5

APVD BY: JSL



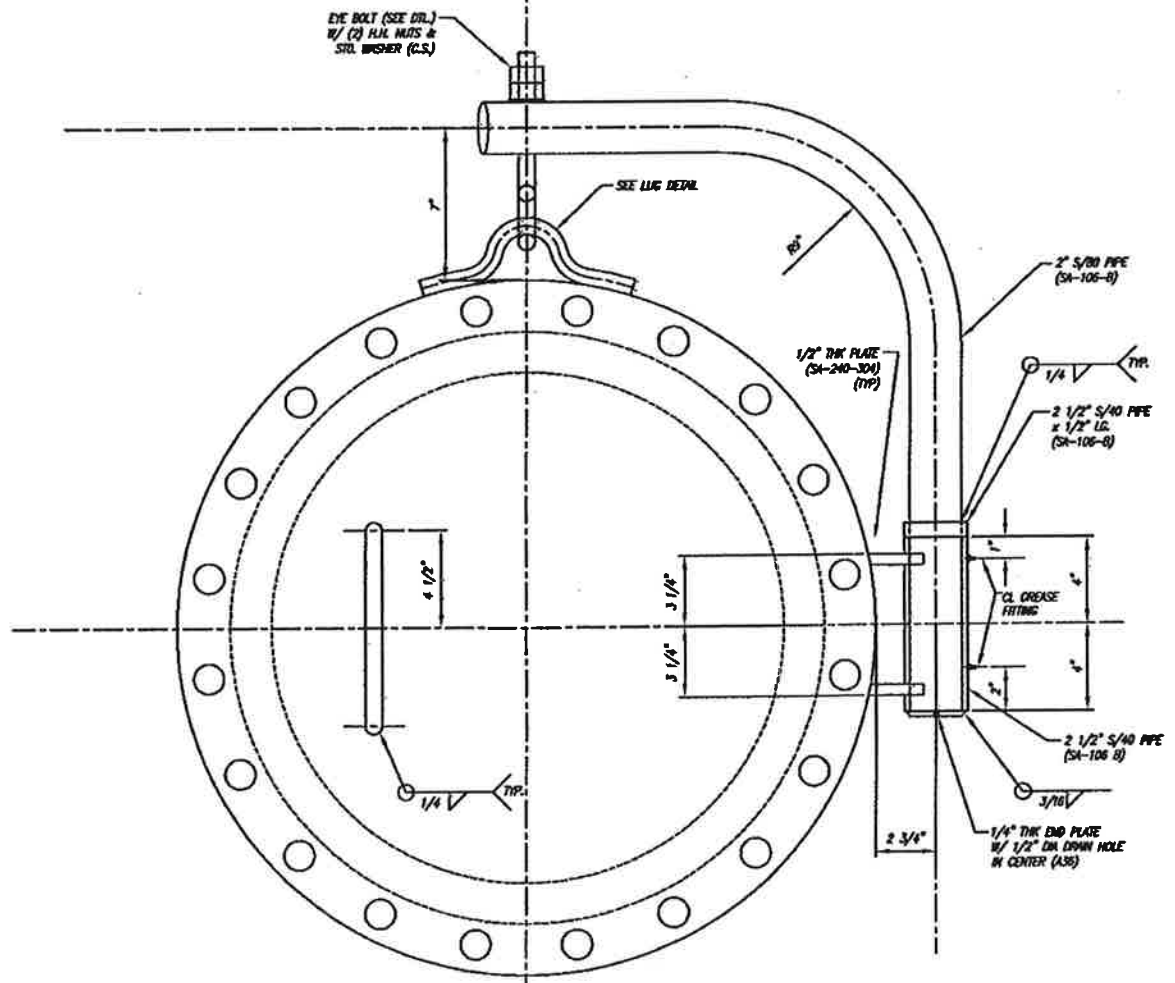
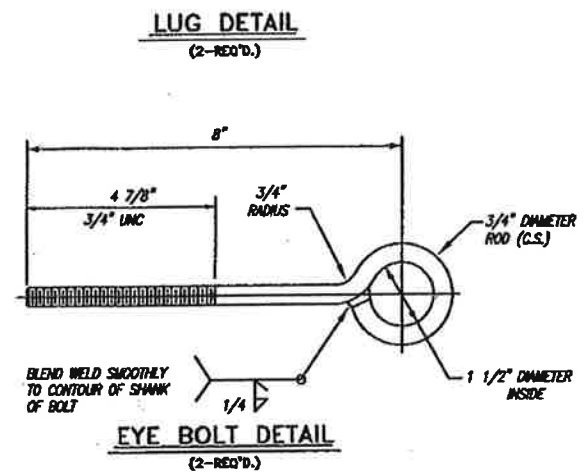
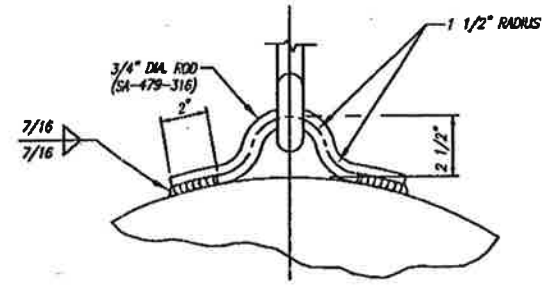
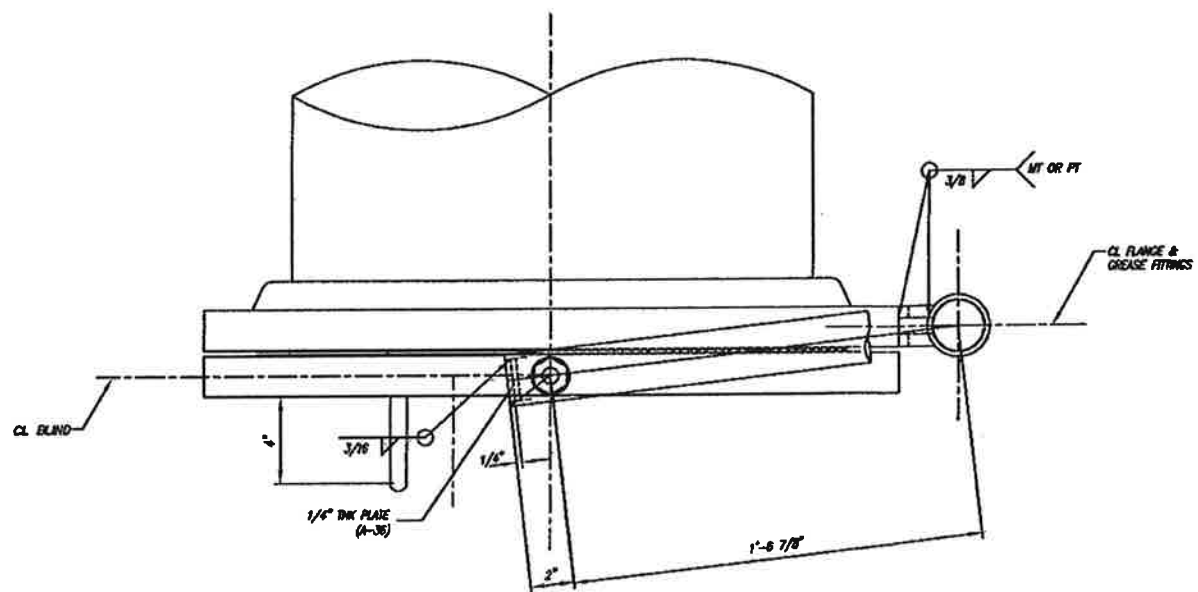
SPECFAB JOB 2007111



REFERENCE DRAWINGS		REVISIONS				
NUMBER	DESCRIPTION	NO.	DESCRIPTION	BY	CHK	DATE
B	ISSUED FOR APPROVAL	JSL	JSL			
D	ISSUED FOR CONSTRUCTION	JSL	JSL			7/8/07

NOTICE
 THIS DRAWING IS THE PROPERTY OF ENCON, INC. OR ONE OF ITS AFFILIATED COMPANIES ("ENCON"). NO COPIES OF OR REPRODUCTION OF THIS DRAWING SHALL BE MADE, IN WHOLE OR IN PART, NOR INFORMATION THEREON PUBLISHED OR USED OTHER THAN AS SPECIFICALLY AUTHORIZED BY ENCON IN WRITING. ALL COPIES ARE TO BE RETURNED ON REQUEST OF ENCON.

S/N: 2007111	ITEM: C3201	ONE	REV'D.
		Specialty Process Fabricators, Inc. 2353 Haining Road Vicksburg, MS 39183 601-636-6888 www.specfab.com	
DESCRIPTION: 60" I.D. x 31'-11" SEAM / SEAM PRIMARY CO2 SCRUBBER ITEM: C3201 Job # 2007111			
CUSTOMER: BUNGE-ERGON VICKSBURG VICKSBURG, MS.			
SCALE: NONE	DATE: 2/15/07	P.O. No.: 61310-4500140663	
DRAWN: JSL	2/15/07	FILE No.: 2007111	
CHECK: JSL	2/15/07	DWG. NO. V-074-102	SHEET NO. 2 OF 5
APVD:			REV. 0



SPECFAB JOB 2007111

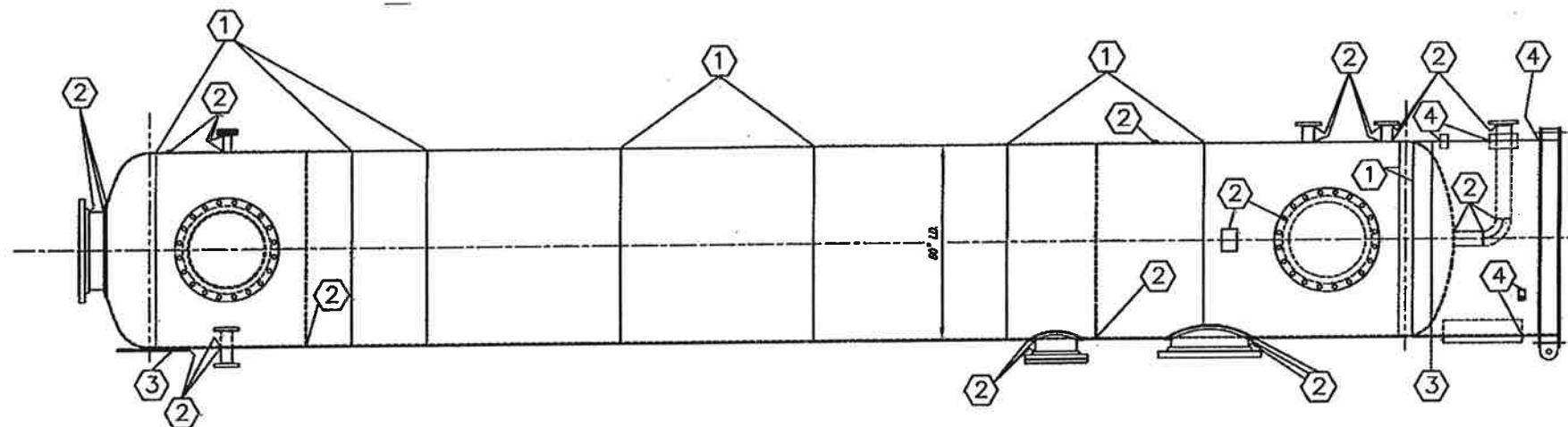
REFERENCE DRAWINGS		REVISIONS			
NUMBER	DESCRIPTION	BY	CHK	DATE	
B	ISSUED FOR APPROVAL	JSL	JSL		
D	ISSUED FOR CONSTRUCTION	JSL	JSL	7/26/07	

NOTICE
THIS DRAWING IS THE PROPERTY OF ERGON, INC. OR ONE OF ITS AFFILIATED COMPANIES ("ERGON"). NO COPIES OR REPRODUCTION OF THIS DRAWING SHALL BE MADE, IN WHOLE OR IN PART, NOR INFORMATION THEREON PUBLISHED OR USED OTHER THAN AS SPECIFICALLY AUTHORIZED BY ERGON IN WRITING. ALL COPIES ARE TO BE RETURNED ON REQUEST OF ERGON.

S/No: 2007111	ITEM: C3201	ONE	REQ'D.
		Specially Process Fabricators, Inc. 2353 Haining Road Vicksburg, Ms 39183 601-636-6888 www.specprofab.com	
DESCRIPTION: 60" I.D. x 31'-11" SEAM / SEAM PRIMARY CO2 SCRUBBER ITEM: C3201 Job # 2007111			
CUSTOMER: BUNGE-ERGON VICKSBURG VICKSBURG, MS.			
SCALE: NONE	DATE: 7/19/07	P.O. No.: 61310-4500140663	
DRAWN: JSL	FILE No.: 2007111		
CHECK: JSL	DWS. NO. V-074-102	SHEET NO. 3	REV. 0
APVD:			

WELD PROCEDURES

① E-154;E-137	③ E-138	⑤ _____	⑦ _____	⑨ _____	⑪ _____	⑬ _____
② E-137;E-102;E-148	④ E-141;E-142;E-139	⑥ _____	⑧ _____	⑩ _____	⑫ _____	⑭ _____



ELEVATION
SEE PLAN FOR TRUE ORIENTATION

SPECFAB JOB # 2007111

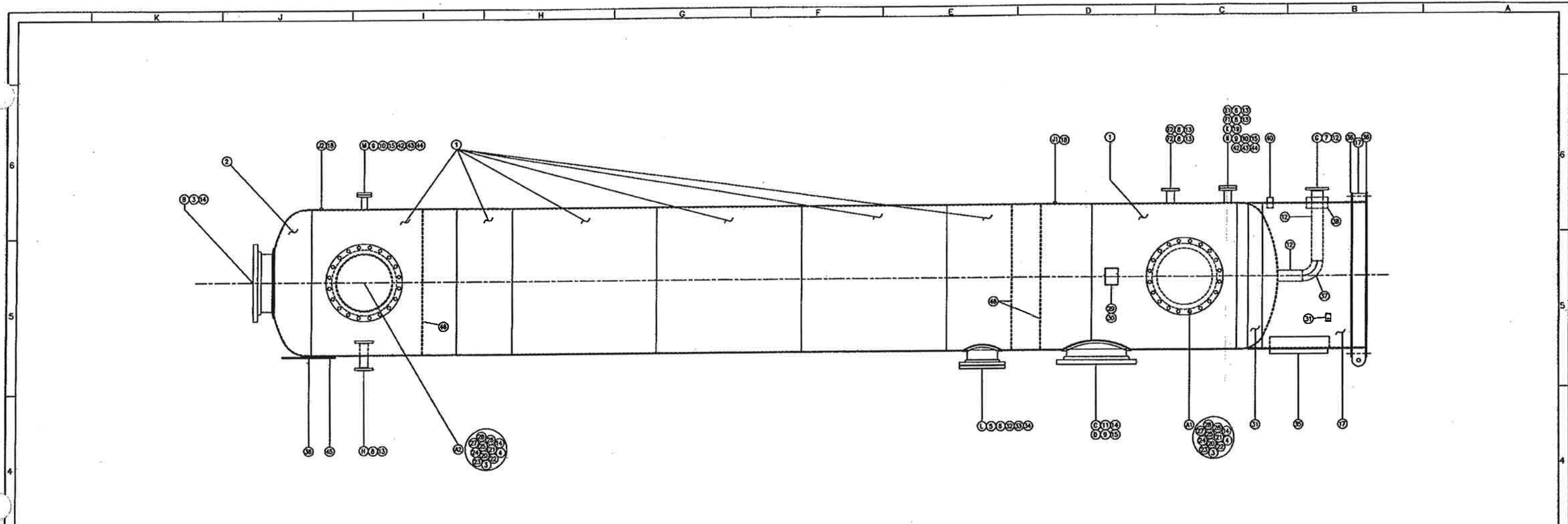
S/O: 2007111	ITEM: C3201	ONE	REV'D
		Specialty Process Fabricators, Inc. 2353 Haining Road Vicksburg, Ms 39183 601-638-6888 www.specprofab.com	
DESCRIPTION: 60" I.D. x 31'-11" SEAM / SEAM PRIMARY CO2 SCRUBBER ITEM: C3201 WELD MAP			
CUSTOMER: ERGON REFINING VICKSBURG, MS.			
SCALE: NONE	DATE: 2/15/07	P.O. No.: 61310-4500140663	
DRAWN: JSL	2/15/07	FILE No.: 2007111	
CHECK: JSL	2/15/07	DWG. NO. V-074-102	SHEET NO. 4 OF 5
APVD:			REV. 0

REFERENCE DRAWINGS		REVISIONS			
NUMBER	DESCRIPTION	NO.	DESCRIPTION	BY	DATE
0	ISSUED FOR CONSTRUCTION	JSL	JSL	JSL	7-28-07

NOTICE
 THIS DRAWING IS THE PROPERTY OF ERGON, INC. OR ONE OF ITS AFFILIATED COMPANIES ("ERGON"). NO COPIES OR REPRODUCTION OF THIS DRAWING SHALL BE MADE, IN WHOLE OR IN PART, NOR INFORMATION THEREON PUBLISHED OR USED OTHER THAN AS SPECIFICALLY AUTHORIZED BY ERGON IN WRITING. ALL COPIES ARE TO BE RETURNED ON REQUEST OF ERGON.

ORIGINATION: BRIAN DYKES
 REV: 0
 S/O NUMBER: _____

CUSTOMER: _____
 PO NUMBER: 61310-4500140663
 ITEM NUMBER: C3201



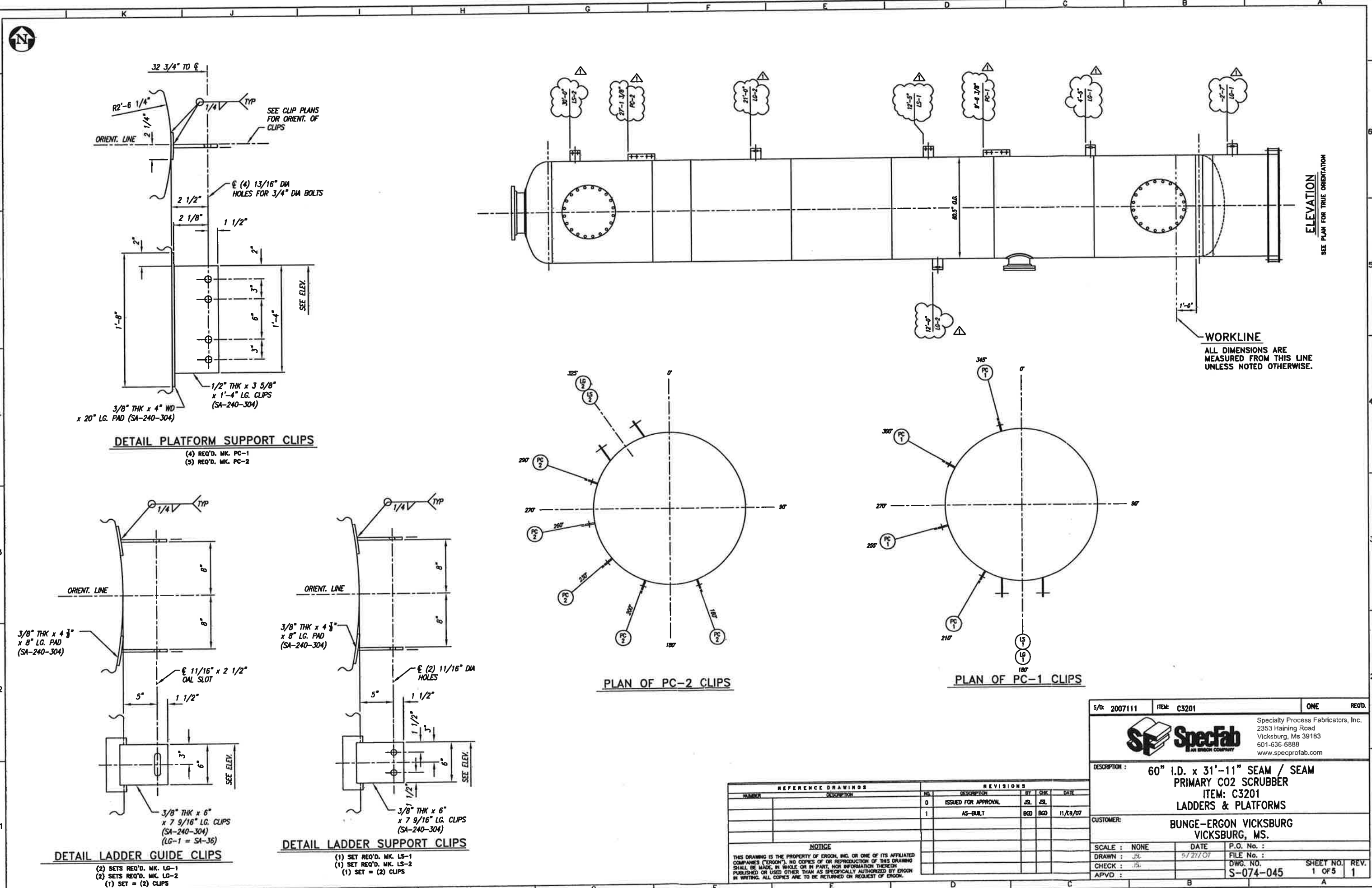
SPECFAB JOB 2007111

Item	Short Text	Order Quantity	Base Unit of Measure
1	PLATE, SA-240 T304, 60" X 193" X 1/4"	7	EA
2	HEAD, ELLIPTICAL, 60" ID X 0.19" MIN TH.	2	EA
3	FLANGE, 24" 150# RFSO, SA 182 F304	4	EA
4	FLANGE, 24" 150# RF BLIND SA 182 F304	2	EA
5	FLANGE, 12" 150# RFSO, SA 182 F304	1	EA
6	FLANGE, 12" 150# RF BLIND SA 182 F304	1	EA
7	FLANGE, 4" 150# RFSO, SA 182 F304	1	EA
8	FLANGE, 3" 150# RFSO, SA 182 F304	5	EA
9	FLANGE, 2" 150# RFSO, SA 182 F304	3	EA
10	FLANGE, 2" 150# RF BLIND SA 182 F304	2	EA
11	FLANGE, 24" 150# RFSO, SA 182 F304	2	EA
12	PIPE 4" STD SA 312 T304S X20	5	FT
13	PIPE 3" STD SA 312 T304S X20	8.3	FT
14	PIPE 24" STD SA 312 T304 X20	3.1	FT
15	PIPE 2" STD SA 312 T304S X20	7.8	FT
16	PIPE 12" STD SA 312 T304S	1	FT
17	PLATE, A36, 60X240X3/8	1	EA
18	HALF COUPLING, 1/2", 3000# SA182F304	2	EA
19	HALF COUPLING, 3/4", 3000# SA182F304	1	EA
20	DAVIT ARM, 2" S80 SA106B	2	EA
21	PIPE, 2-1/2" A106B S40	2	FT
22	EYEBOLT, 3/4 DIA, CS, 1-1/2" DIA EYE	2	EA
23	NUT, HEAVY HEX 3/4 UNC CS	4	EA
24	STUD, 1-1/4" DIA X 7-1/2" LG. SA193 B7	40	EA
25	NUT, 1-1/4", SA194 2H	80	EA
26	WASHER, FLAT, 3/4" CS	2	EA
27	GASKET, 24" GARLOCK 3000 1/8" THICK	6	EA
28	ROD, 3/4" SA479-304	6	FT
29	STENCIL PO#6310-45004140663	1	EA
30	STENCIL ITEM# C3201	1	EA
31	3/8" X 6" X 12" 304SS FLAT BAR 2007111	2	EA
32	STUD, 7/8" DIA X 4-3/4" LG. SA193 B7	12	EA
33	NUT, 7/8", SA194 2H	24	EA
34	GASKET, 12" GARLOCK 3000 1/8" THICK	2	EA
35	PIPE 24" STD SA 106 B	0.6	FT
36	PLATE, A36, 60X240X3/4	1	EA
37	ELBOW, 90 DEG, STD, BW, SA403-WP304	1	EA
38	PIPE 8" STD SA 106 B	1	FT
39	GASKET, 4" GARLOCK 3000 1/8" THICK	1	EA
40	PIPE 2" STD SA 106 B	1	FT
41	GASKET, 3" GARLOCK 3000 1/8" THICK	5	EA
42	GASKET, 2" GARLOCK 3000 1/8" THICK	3	EA
43	STUD, 5/8" DIA X 3-1/4" LG. SA193 B7	8	EA
44	NUT, 5/8", SA194 2H	16	EA
45	PLATE, SA-240 T304, 8" X 8" X 3/8"	2	EA
46	FLAT BAR, ROLLED, 2" X 1/4" SA240-304 PER DRAWING SK-1	3	EA

REFERENCE DRAWINGS		REVISIONS			
NUMBER	DESCRIPTION	BY	CHK	DATE	
B	ISSUED FOR APPROVAL	JL	JL		
0	ISSUED FOR CONSTRUCTION	JL	JL	7/26/07	


NOTICE
THIS DRAWING IS THE PROPERTY OF EROON, INC. OR ONE OF ITS AFFILIATED COMPANIES ("EROON"). NO COPIES OF OR REPRODUCTION OF THIS DRAWING SHALL BE MADE, IN WHOLE OR IN PART, NOR INFORMATION THEREON PUBLISHED OR USED OTHER THAN AS SPECIFICALLY AUTHORIZED BY EROON. IN WRITING, ALL COPIES ARE TO BE RETURNED ON REQUEST OF EROON.

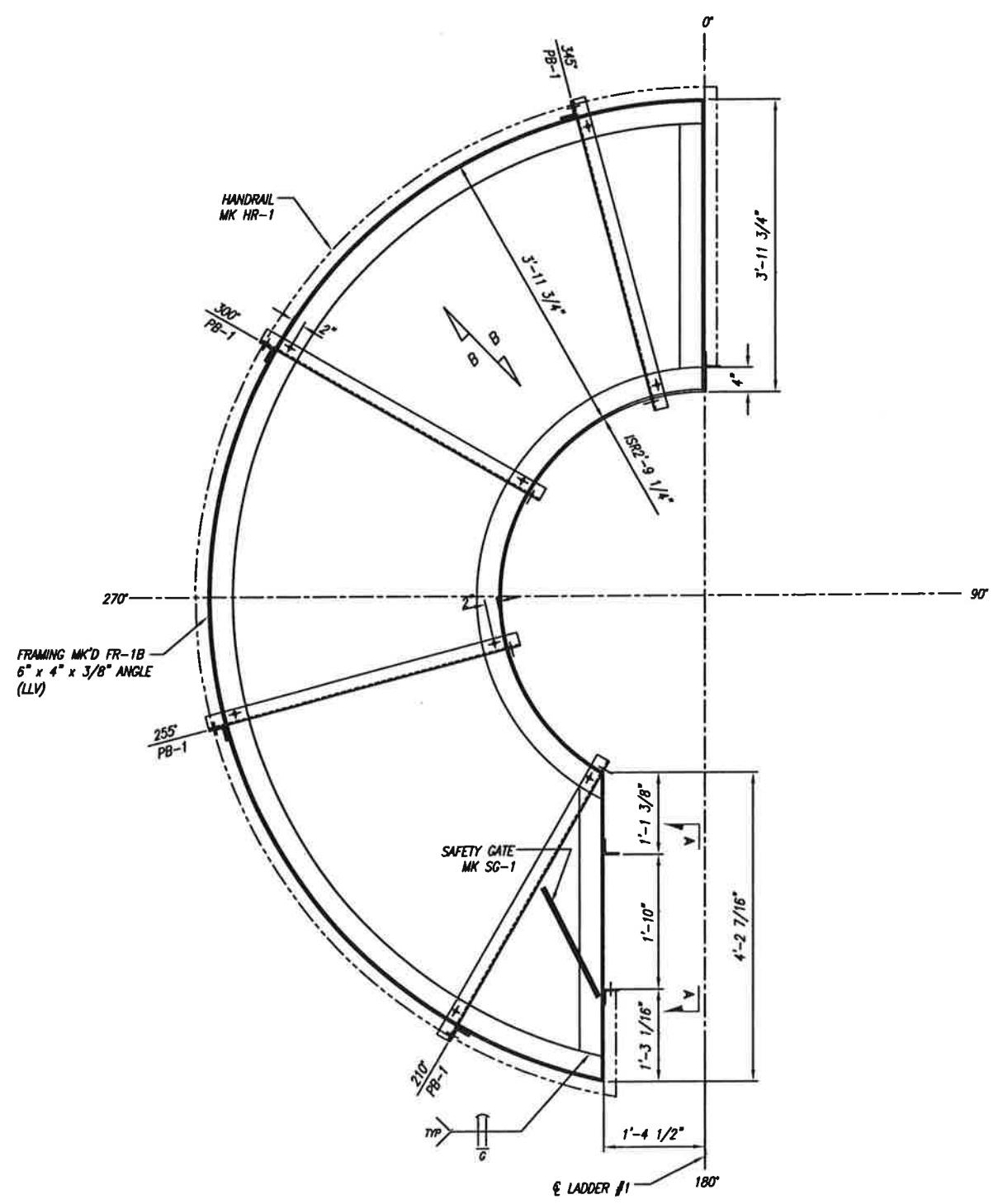
S/CL 2007111	ITEM C3201	ONE	REV'D
		Specialty Process Fabricators, Inc. 2353 Haining Road Vicksburg, Ms 39183 601-636-6888 www.specprofab.com	
DESCRIPTION : 60" I.D. x 31'-11" SEAM / SEAM PRIMARY CO2 SCRUBBER ITEM: C3201 BOM			
CUSTOMER: BUNGE-ERCON VICKSBURG VICKSBURG, MS.			
SCALE : NONE	DATE : 2/15/07	P.O. No. : 61310-4500140663	
DRAWN : JL	CHECK : JL	FILE No. : 2007111	DWS. NO. : V-074-103
APVD :		SHEET NO. : 5	REV. : 0



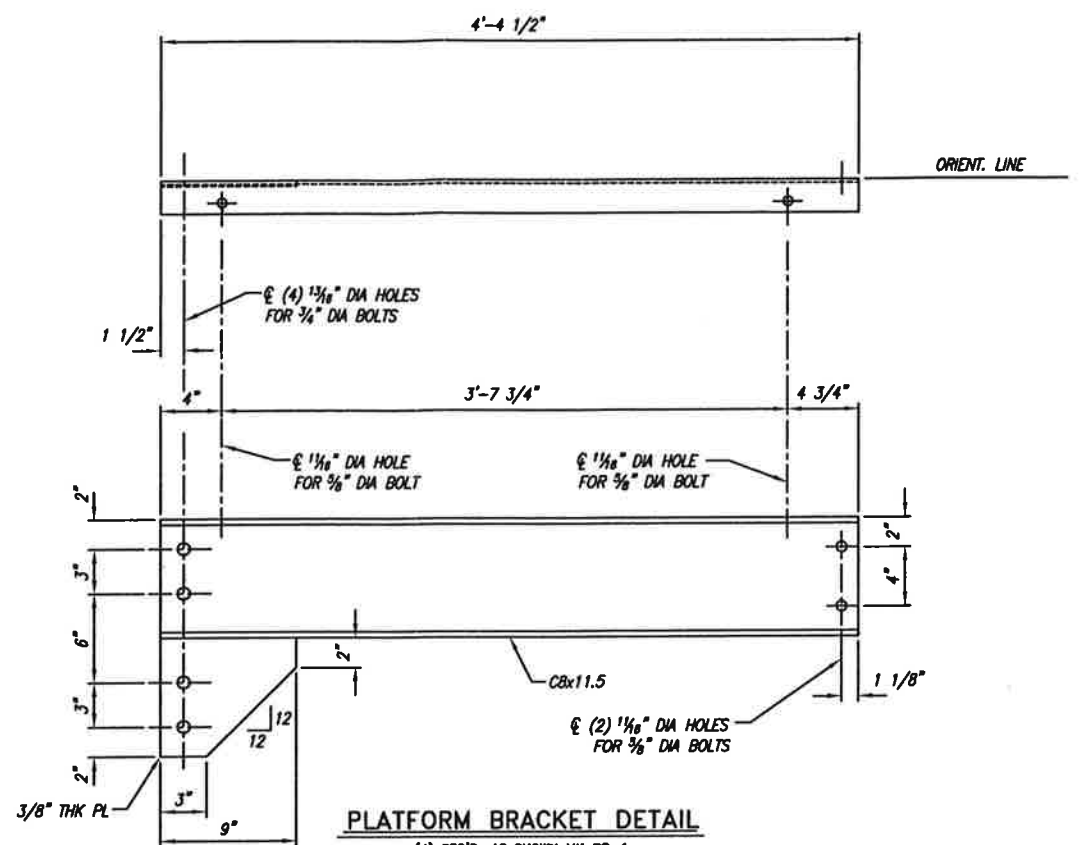
REFERENCE DRAWINGS		REVISIONS				
NUMBER	DESCRIPTION	NO.	DESCRIPTION	BY	CHK.	DATE
0	ISSUED FOR APPROVAL	JSL	JSL			
1	AS-BUILT	BOD	BOD			11/09/07

NOTICE
THIS DRAWING IS THE PROPERTY OF ERCON, INC. OR ONE OF ITS AFFILIATED COMPANIES ("ERCON"). NO COPIES OF OR REPRODUCTION OF THIS DRAWING SHALL BE MADE, IN WHOLE OR IN PART, NOR INFORMATION THEREIN PUBLISHED OR USED OTHER THAN AS SPECIFICALLY AUTHORIZED BY ERCON IN WRITING. ALL COPIES ARE TO BE RETURNED ON REQUEST OF ERCON.

S/Dr 2007111	ITEM: C3201	ONE	REQ'D.
		Specialty Process Fabricators, Inc. 2353 Haining Road Vicksburg, Ms 39183 601-636-6888 www.specprofab.com	
DESCRIPTION : 60" I.D. x 31'-11" SEAM / SEAM PRIMARY CO2 SCRUBBER ITEM: C3201 LADDERS & PLATFORMS			
CUSTOMER: BUNGE-ERCON VICKSBURG VICKSBURG, MS.			
SCALE : NONE	DATE : 5/7/11/07	P.O. No. :	FILE No. :
DRAWN : JSL	CHECK : JSL	DWG. No. :	SHEET NO. :
APVD :		S-074-045	1 OF 5
			REV. 1




PLAN OF PLATFORM #1



PLATFORM BRACKET DETAIL

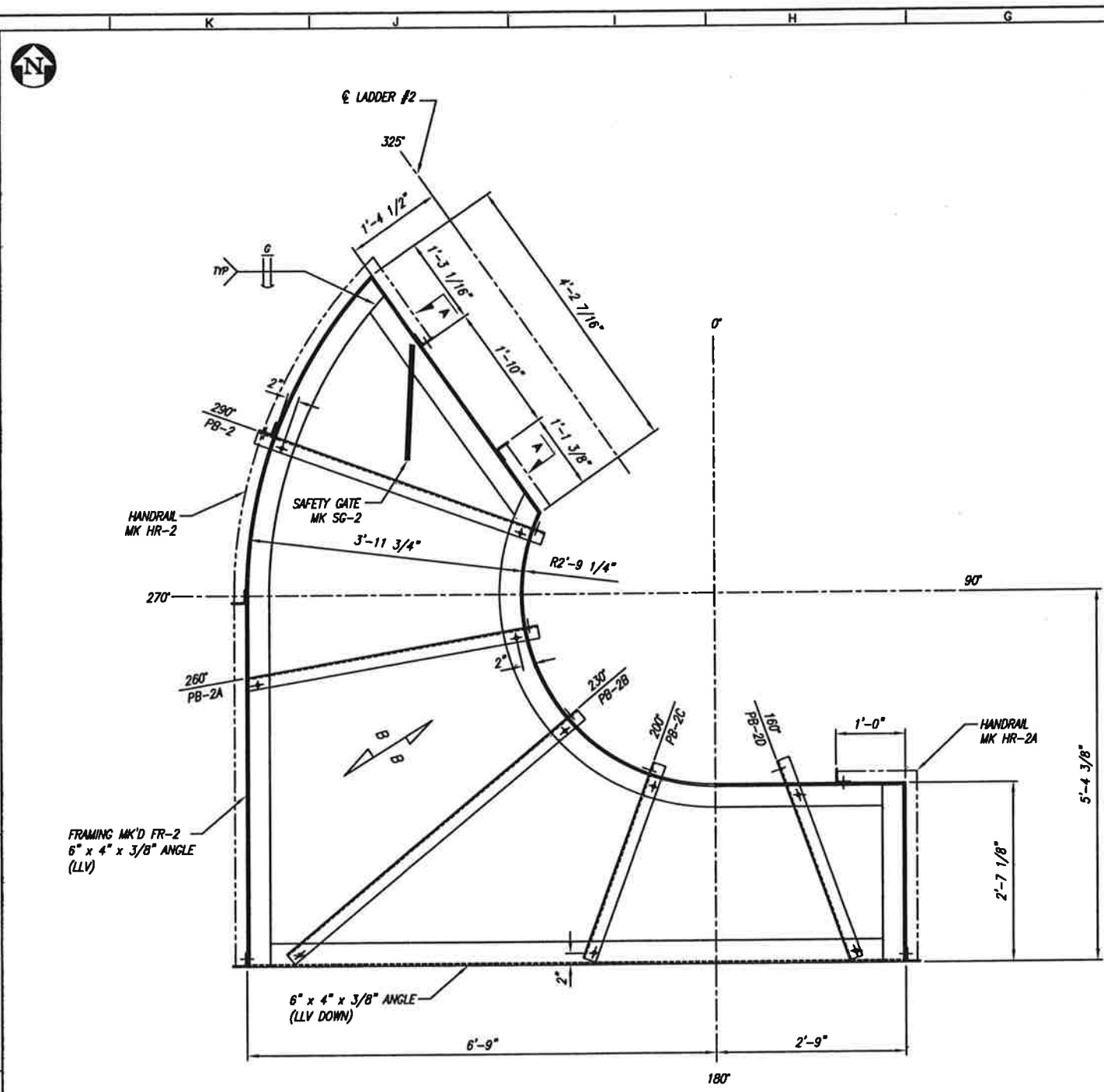
- (4) REQ'D. AS SHOWN MK PB-1
- (1) REQ'D. OPP HAND MK PB-2

GENERAL NOTES
 ALL MATERIAL TO BE A-36 UNLESS NOTED OTHERWISE.
 ALL HOLES TO BE 11/16" DIA. UNLESS NOTED OTHERWISE.
 ALL WELDS TO BE 3/16" CONT. FILLET UNLESS NOTED OTHERWISE.
 REMOVE ALL BURRS & SHARP CORNERS AFTER FABR.
 ALL BOLTING TO BE A-325 UNLESS NOTED OTHERWISE.
 ALL FRAMING, BRACKETS, HANDRAILS AND GRATING TO BE HOT DIPPED GALVANIZED PER ASTM A-123.
 ALL GRATING TO HAVE 1 1/4" x 3/16" SERRATED BEARING BARS AT 1 3/16" CENTERS & CROSS BARS AT 4" CENTERS, FIELD INSTALLED WITH "G" TYPE CLIPS MIN. FOUR PER GRATING PANEL. SAFETY GATES TO BE MANUFACTURED BY INTREPID (DOUBLE BAR), PROVIDED BY SPECFAB, AND INSTALLED IN FIELD BY OTHERS.

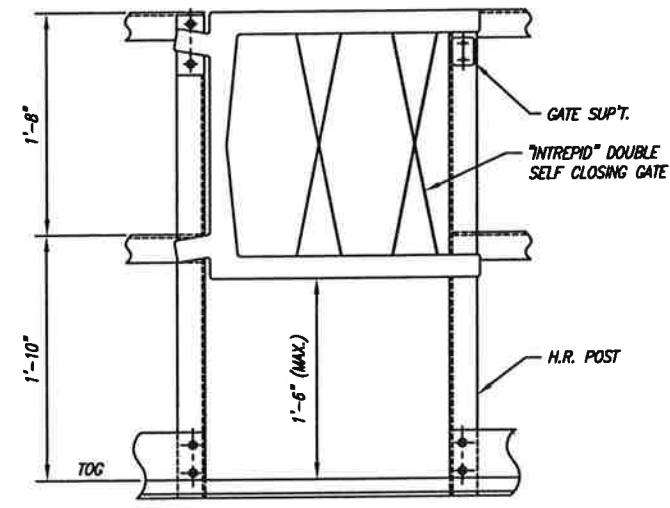
S/O: 2007111	ITEM: C3201	ONE	REQ'D.
		Specialty Process Fabricators, Inc. 2353 Haining Road Vicksburg, Ms 39183 601-636-6888 www.specprofab.com	
		DESCRIPTION: 60" I.D. x 31'-11" SEAM / SEAM PRIMARY CO2 SCRUBBER ITEM: C3201 LADDERS & PLATFORMS	
CUSTOMER: BUNGE-ERGON VICKSBURG VICKSBURG, MS.			
SCALE: NONE	DATE: 8/21/07	P.O. No.:	FILE No.:
DRAWN: JSL	CHECK: JSL	DWS. NO.:	SHEET NO. REV.
APVD:		S-074-045	2 OF 5 1

REFERENCE DRAWINGS		REVISIONS			
NUMBER	DESCRIPTION	NO.	DESCRIPTION	BY	DATE
0		0	ISSUED FOR APPROVAL	JSL	JSL
1		1	AS-BUILT	BGD	BGD 11/09/07

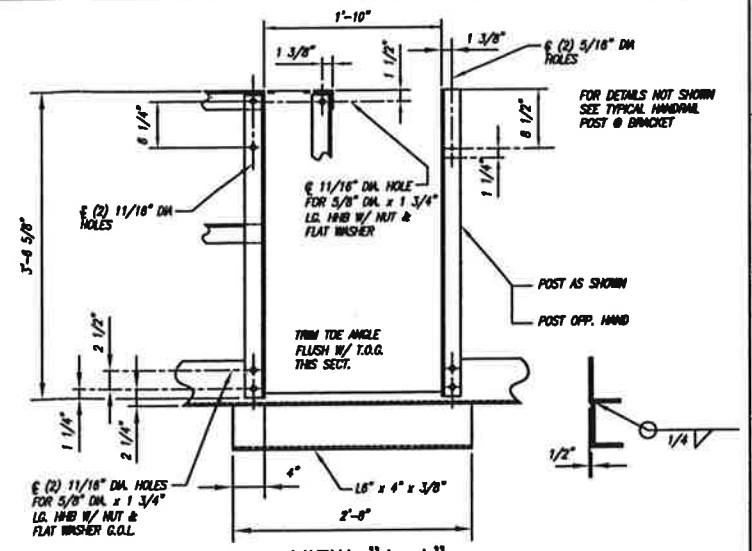
NOTICE
 THIS DRAWING IS THE PROPERTY OF ERGON, INC. OR ONE OF ITS AFFILIATED COMPANIES ("ERGON"). NO COPIES OR REPRODUCTION OF THIS DRAWING SHALL BE MADE, IN WHOLE OR IN PART, NOR INFORMATION THEREON PUBLISHED OR USED OTHER THAN AS SPECIFICALLY AUTHORIZED BY ERGON IN WRITING. ALL COPIES ARE TO BE RETURNED ON REQUEST OF ERGON.



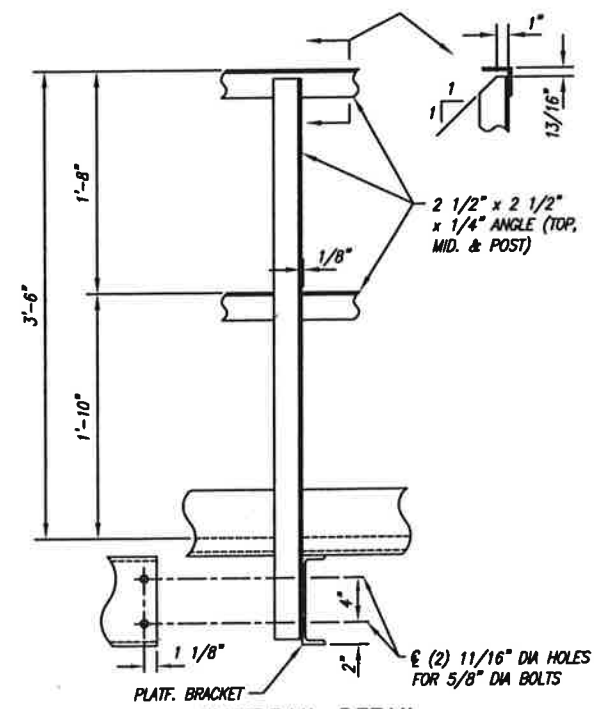
PLAN OF PLATFORM #2



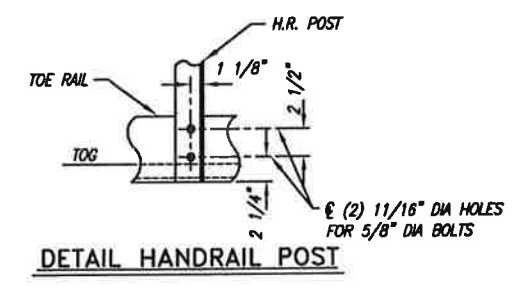
DETAIL SAFETY GATE
(S) REQ'D.



VIEW "A-A"
AS SHOWN
VIEW "A1-A1"
OPP. HAND



HANDRAIL DETAIL

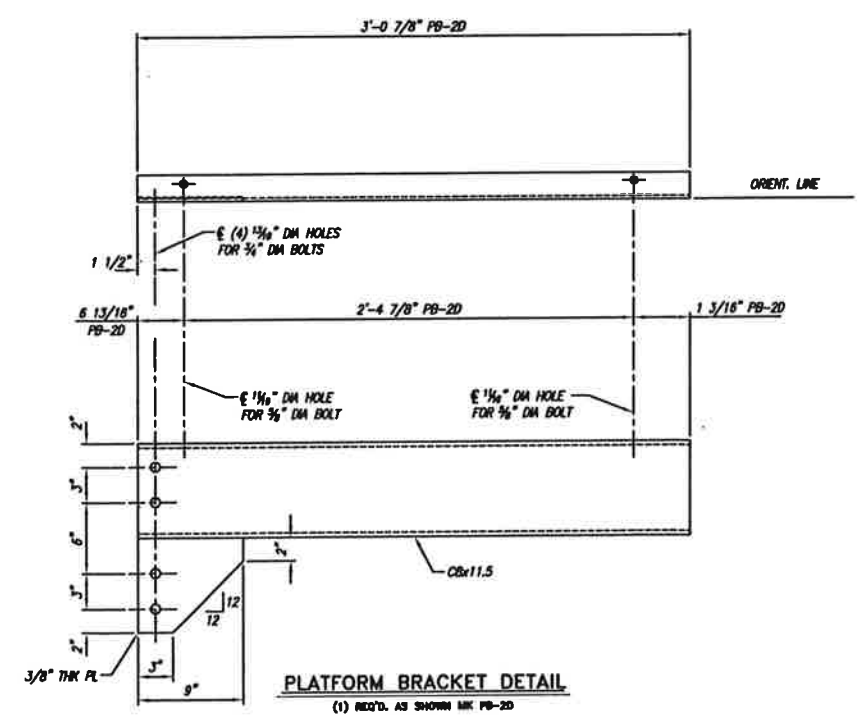
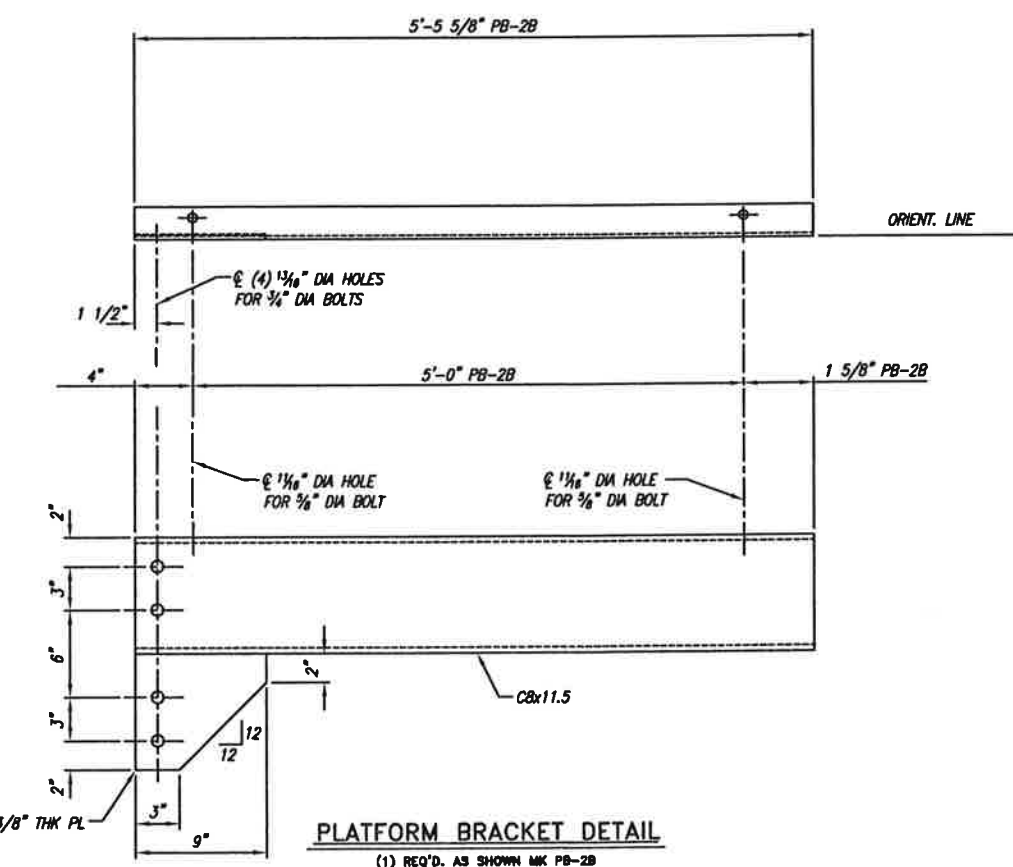
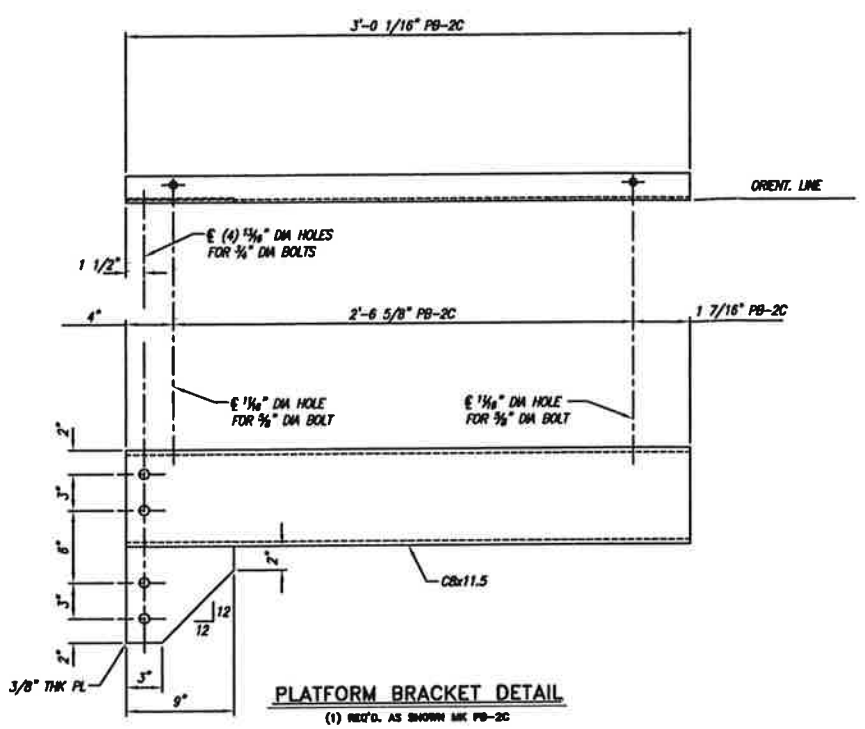
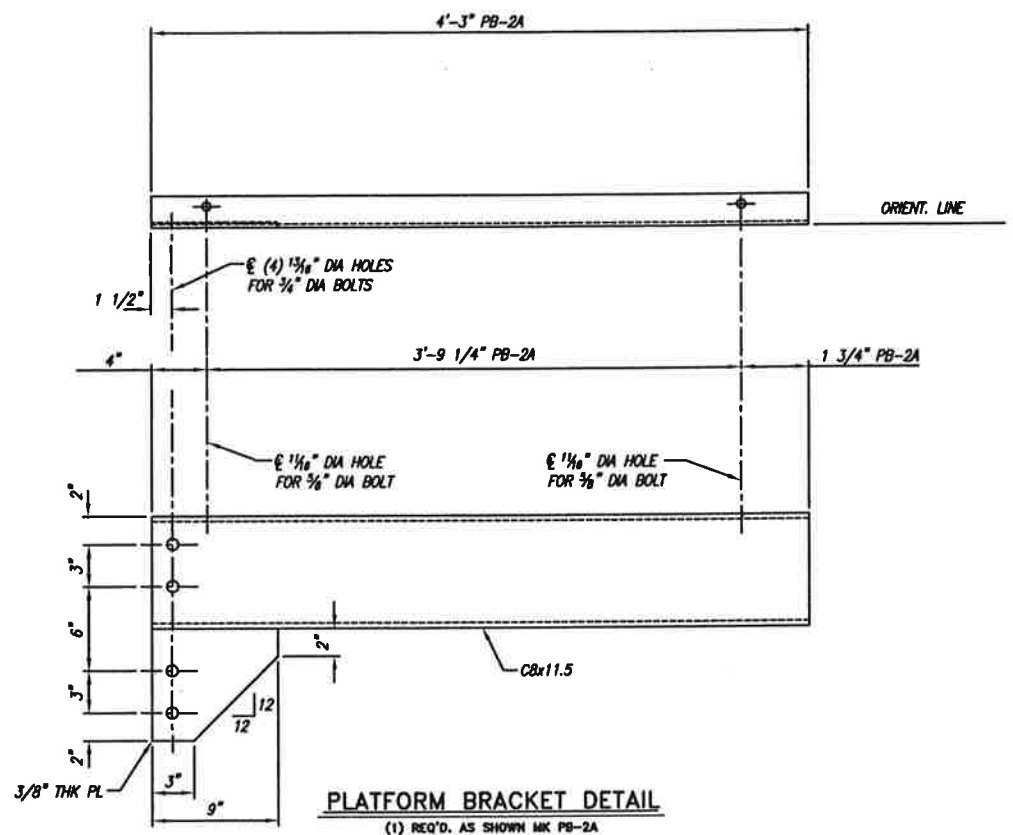


DETAIL HANDRAIL POST

REFERENCE DRAWINGS		REVISIONS				
NUMBER	DESCRIPTION	NO.	DESCRIPTION	BY	CHK	DATE
0	ISSUED FOR APPROVAL	JSL	JSL			
1	AS-BUILT	BGD	BGD			11/09/07


NOTICE
THIS DRAWING IS THE PROPERTY OF EROCK, INC. OR ONE OF ITS AFFILIATED COMPANIES ("EROCK"). NO COPIES OR REPRODUCTION OF THIS DRAWING SHALL BE MADE, IN WHOLE OR IN PART, NOR INFORMATION THEREON PUBLISHED OR USED OTHER THAN AS SPECIFICALLY AUTHORIZED BY EROCK IN WRITING. ALL COPIES ARE TO BE RETURNED ON REQUEST OF EROCK.

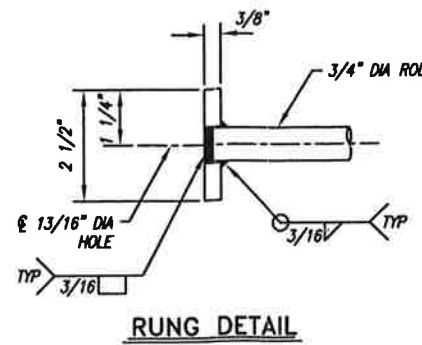
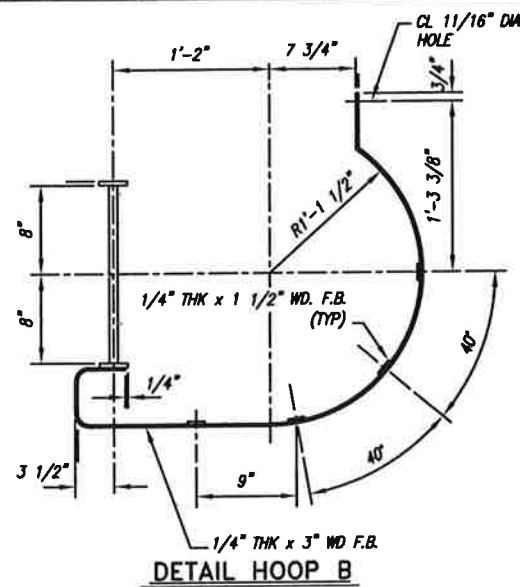
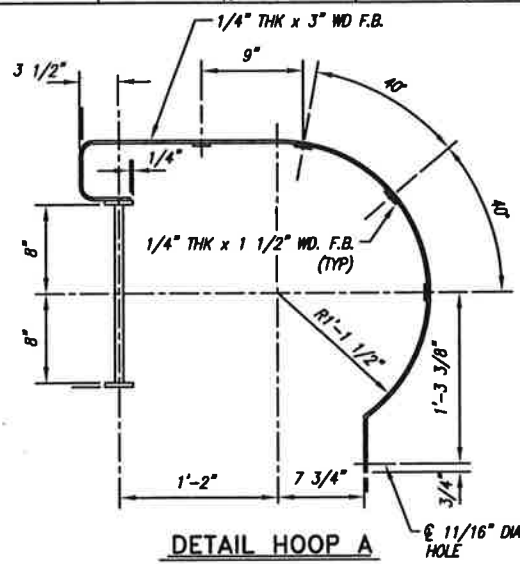
S/CR 2007111	ITEM: C3201	ONE	REQD.
		Specialty Process Fabricators, Inc. 2353 Haining Road Vicksburg, MS 39183 601-636-6888 www.specprofab.com	
		DESCRIPTION: 60" I.D. x 31'-11" SEAM / SEAM PRIMARY CO2 SCRUBBER ITEM: C3201 LADDERS & PLATFORMS	
CUSTOMER: BUNGE-ERGON VICKSBURG VICKSBURG, MS.			
SCALE: NONE	DATE: 5/21/07	P.O. No.:	FILE No.:
DRAWN: JSL	CHECK: JSL	DWG. NO. S-074-045	SHEET NO. 3 OF 5
APVD:			REV. 1



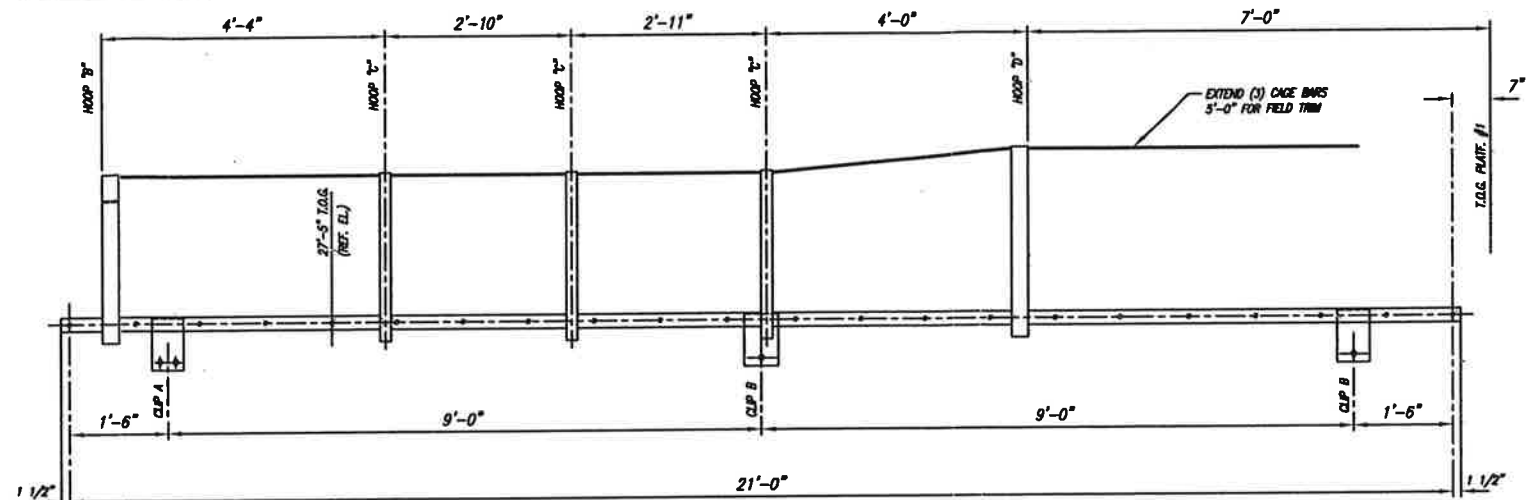
REFERENCE DRAWINGS		REVISIONS			
NUMBER	DESCRIPTION	NO.	DESCRIPTION	BY	DATE
		0	ISSUED FOR APPROVAL	JSL	JSL
		1	AS-BUILT	BGD	BGD 11/09/07

NOTICE
THIS DRAWING IS THE PROPERTY OF ERGON, INC. OR ONE OF ITS AFFILIATED COMPANIES ("ERGON"). NO COPIES OR REPRODUCTION OF THIS DRAWING SHALL BE MADE, IN WHOLE OR IN PART, NOR INFORMATION THEREON PUBLISHED OR USED OTHER THAN AS SPECIFICALLY AUTHORIZED BY ERGON IN WRITING. ALL COPIES ARE TO BE RETURNED ON REQUEST OF ERGON.

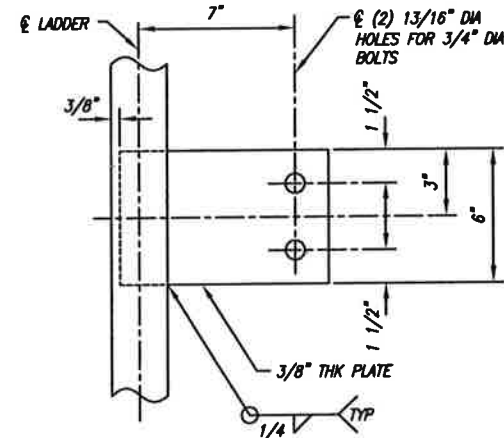
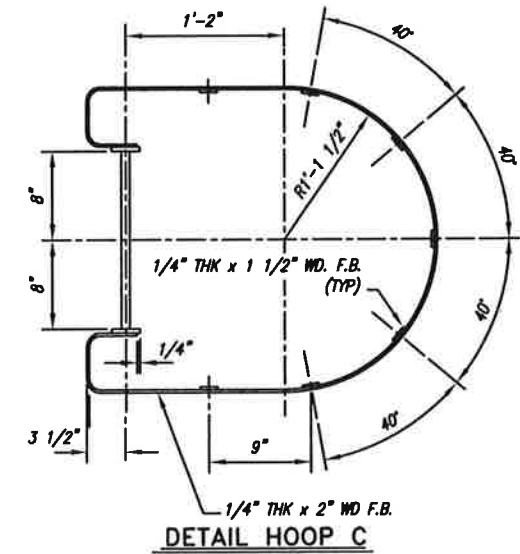
S/O: 2007111	ITEM: C3201	ONE	REQ'D.
		Specialty Process Fabricators, Inc. 2353 Haining Road Vicksburg, Ms 39183 601-636-6888 www.specprofab.com	
		DESCRIPTION: 60" I.D. x 31'-11" SEAM / SEAM PRIMARY CO2 SCRUBBER ITEM: C3201 LADDERS & PLATFORMS	
CUSTOMER: BUNGE-ERGON VICKSBURG VICKSBURG, MS.			
SCALE: NONE	DATE: 5/27/07	P.O. No.:	FILE No.:
DRAWN: JSL	CHECK: JSL	DWG. NO. S-074-045	SHEET NO. 4 OF 5
APVD:			REV. 1



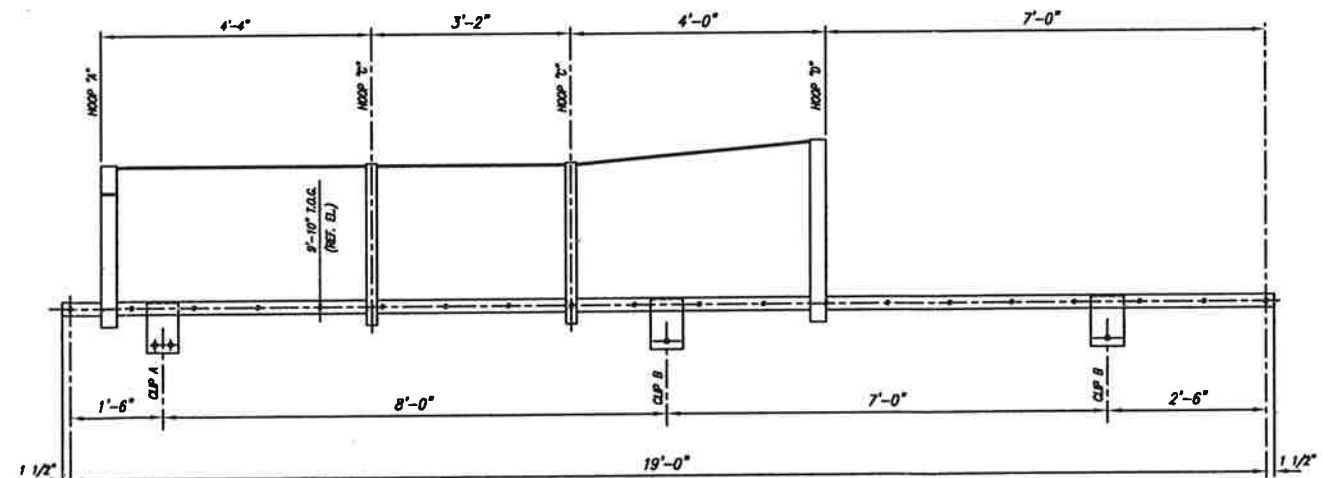
RUNG DETAIL



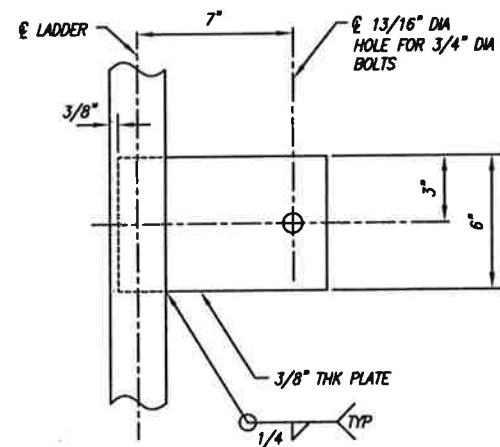
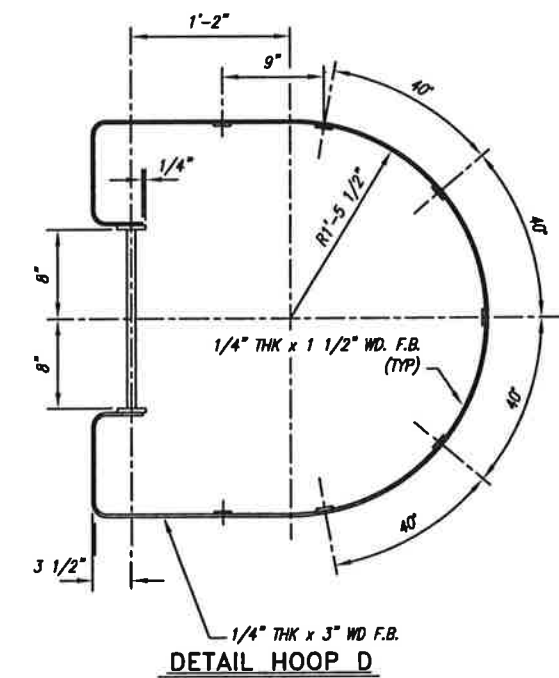
DETAIL LADDER #2
(1-REQ'D.)



DETAIL CLIP A
(2) EACH SET



DETAIL LADDER #1
(1-REQ'D.)



DETAIL CLIP B
(2) EACH SET

REFERENCE DRAWINGS		REVISIONS			
NUMBER	DESCRIPTION	NO.	DESCRIPTION	BY	DATE
0	ISSUED FOR APPROVAL	JSL	JSL		
1	AS-BUILT	BGO	BGO		11/09/07

NOTICE
THIS DRAWING IS THE PROPERTY OF ERCON, INC. OR ONE OF ITS AFFILIATED COMPANIES ("ERCON"). NO COPIES OR REPRODUCTION OF THIS DRAWING SHALL BE MADE, IN WHOLE OR IN PART, FOR INFORMATION THEREON PUBLISHED OR USED OTHER THAN AS SPECIFICALLY AUTHORIZED BY ERCON IN WRITING. ALL COPIES ARE TO BE RETURNED ON REQUEST OF ERCON.

S/O: 2007111	ITEM: C3201	ONE	REQ'D.
		Specialty Process Fabricators, Inc. 2353 Haining Road Vicksburg, Ms 39183 601-636-6888 www.specprofab.com	
		DESCRIPTION: 60" I.D. x 31'-11" SEAM / SEAM PRIMARY CO2 SCRUBBER ITEM: C3201 LADDERS & PLATFORMS	
CUSTOMER:		BUNGE-ERCON VICKSBURG VICKSBURG, MS.	
SCALE: NONE	DATE: 5/12/07	P.O. No.:	
DRAWN: JSL	CHECK: JSL	FILE No.:	
APVD: APVD	DWG. NO. S-074-045	SHEET NO. 5 OF 5	REV. 1