

ELEVATION  
SEE PLAN FOR TRUE ORIENTATION

WORKLINE  
ALL DIMENSIONS ARE MEASURED FROM THIS LINE UNLESS NOTED OTHERWISE.

EST. WEIGHTS & CAPACITY

|              |        |       |
|--------------|--------|-------|
| EMPTY WEIGHT | 8,350  | LBS.  |
| LIFT WEIGHT  | 9,750  | LBS.  |
| HYDRO WEIGHT | 35,000 | LBS.  |
| CAPACITY     | 3,157  | GALS. |
| INSULATION   | NONE   | LBS.  |

GENERAL NOTES

- 1) FLANGE BOLT HOLE TO STAGGLE VESSEL CENTERLINES UNLESS NOTED OTHERWISE.
- 2) DRILL & TAP 1/4" TELLTALE HOLE IN REINFORCING PAD.
- 3) OUTSIDE PROJECTION SHOWN IN THE NOZZLE SCHEDULE IS FROM VESSEL O.D. UNLESS NOTED OTHERWISE.
- 4) INSIDE PROJECTION SHOWN IN THE NOZZLE SCHEDULE IS MINIMUM ONLY.
- 5) ALL NOZZLES SHALL BE PROPERLY PROTECTED AND COVERED FOR SHIPMENT.
- 6) VESSEL TO BE DRY, CLEAN, AND DEWATERED BEFORE SHIPMENT.
- 7) ALL FLANGE FACE FINISHES ARE TO BE 125-250 RA.
- 8) PAINT OR STENCIL P.D. NUMBER & ITEM NO. WITH 6" HIGH LETTERS ON ONE SIDE OF VESSEL.
- 9) ALL INTERNALS SHALL BE REMOVABLE THRU VESSEL MANWAYS.
- 10) BLINDED CONNECTIONS FURNISHED WITH BLIND FLANGE, STUDS, NUTS AND (2) GASKETS.
- 11) WELDING IS TO USE ER308L / EXXXL ELECTRODES.
- 12) PIPE FOR 12" AND SMALLER IS TO BE SEAMLESS AND WELDED PIPE FOR 14" AND LARGER.
- 13) WMP LIMITED BY HEADS.
- 14) VESSEL LIFT WEIGHT DOES NOT INCLUDE INTERNAL PACKING.

SPECFAB JOB # 2007112

ITEM # C3202 OD 48 1/2"

PO# 61310-4500140663

SHELL THICKNESS 1/4"

HEAD THICKNESS 0.188" MIN

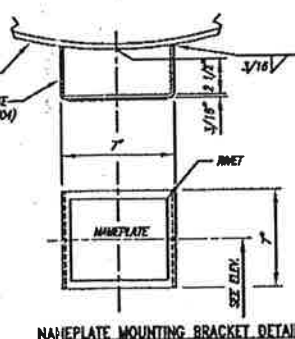
VESSEL EMPTY WT 8350 LBS

VESSEL LIFT WT 9750 LBS

MAX HYDRO PRESS 142 PSIG

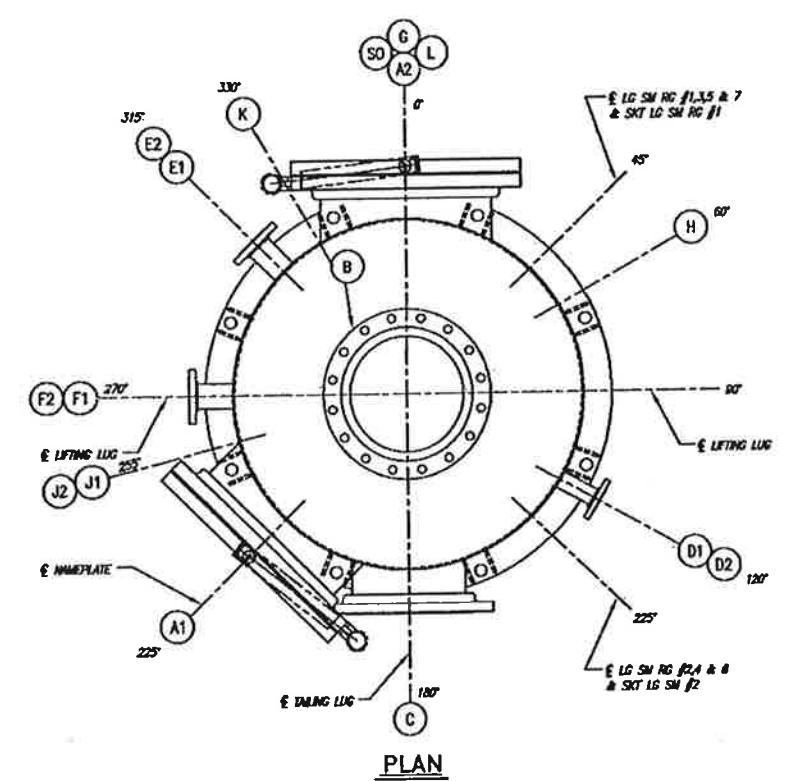
NOTE: VESSEL LIFT WT DOES NOT INCLUDE INTERNAL PACKING

NAMEPLATE TAG DETAIL



\*\*\* (4) 5/8" DIA x 3 1/2" LG STUDS W/ (2) NUTS EA.  
\*\*\* (12) 7/8" DIA x 5" LG STUDS W/ (2) NUTS EA.  
\*\*\* (20) 1 1/8" DIA x 7 1/2" LG STUDS W/ (2) NUTS EA.

NAMEPLATE MOUNTING BRACKET DETAIL



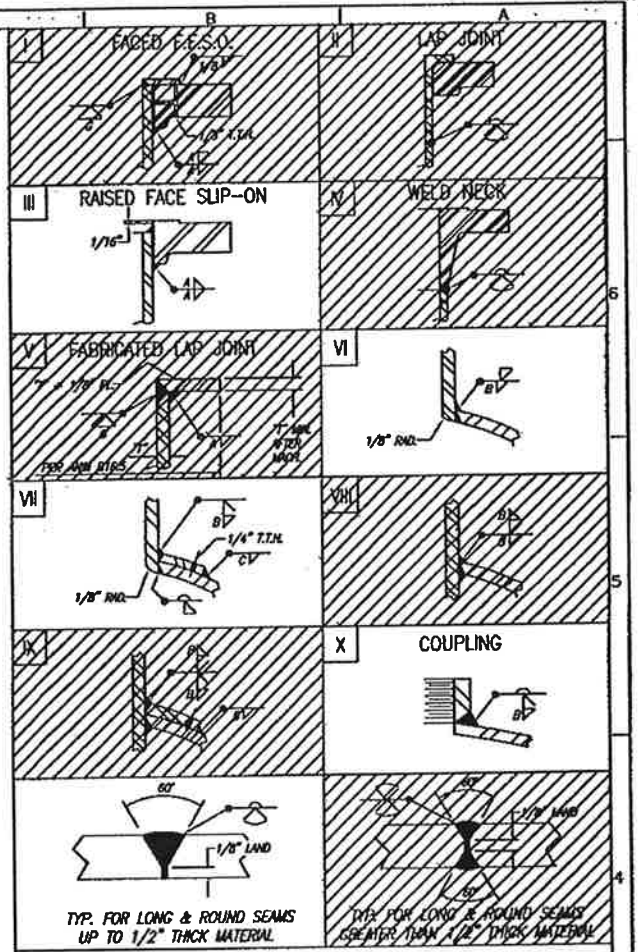
PLAN

| MARK NO. | SERVICE           | SIZE | RATING | TYPE     | MATERIAL    | THICK. X WD. | MAT'L        | O.S.      | LS.        | WELD | WELD SIZE | NOTES                       |
|----------|-------------------|------|--------|----------|-------------|--------------|--------------|-----------|------------|------|-----------|-----------------------------|
| SO 1     | SHORT OPENING     | 4"   |        |          | SEE DTL.    |              |              |           |            |      |           |                             |
| SA 1     | SHORT ACCESS      | 24"  |        |          | SEE DTL.    |              |              |           |            |      |           |                             |
| SV 2     | SHORT VENTS       | 2"   |        |          | SEE DTL.    |              |              |           |            |      |           |                             |
| L 1      | PACKING DUMP      | 12"  | 150#   | RFSD     | SA-182-F304 | 5/40#        | SA-312-TP304 | 1/4" x 2" | SA-240-304 | 6"   | FLUSH     | W/ BLD, GASKET & BOLTING ** |
| K 1      | TI                | 3/4" | 3000#  | HLF CPLG | SA-182-F304 |              |              |           |            |      |           |                             |
| J1/2 2   | FL. IN            | 1/2" | 3000#  | HLF CPLG | SA-182-F304 |              |              |           |            |      |           |                             |
| H 1      | WATER INLET       | 2"   | 150#   | RFSD     | SEE DTL.    |              |              |           |            |      |           |                             |
| G 1      | WATER OUTLET      | 2"   | 150#   | RFSD     | SEE DTL.    |              |              |           |            |      |           |                             |
| F1/2 2   | SHORT GLASS       | 3"   | 150#   | RFSD     | SA-182-F304 | 5/40#        | SA-312-TP304 |           |            | 6"   | FLUSH     | W/ BLD, GASKET & BOLTING ** |
| E1/2 2   | LEVEL TRANSMITTER | 3"   | 150#   | RFSD     | SA-182-F304 | 5/40#        | SA-312-TP304 |           |            | 6"   | FLUSH     | W/ BLD, GASKET & BOLTING ** |
| D1/2 2   | SPWGE             | 2"   | 150#   | RFSD     | SA-182-F304 | 5/20         | SA-312-TP304 | 1/4" x 2" | SA-240-304 | 6"   | FLUSH     | W/ BLD, GASKET & BOLTING ** |
| C 1      | CO2 MEET          | 16"  | 150#   | RFSD     | SA-182-F304 | 5/20         | SA-312-TP304 | 1/4" x 2" | SA-240-304 | 6"   | FLUSH     | W/ BLD, GASKET & BOLTING ** |
| B 1      | WATER OUTLET      | 16"  | 150#   | RFSD     | SA-182-F304 | 5/20         | SA-312-TP304 | 3/8" x 2" | SA-240-304 | 6"   | FLUSH     | W/ BLD, GASKET & BOLTING ** |
| A2 1     | MANWAY            | 24"  | 150#   | RFSD     | SA-182-F304 | 5/20         | SA-312-TP304 | 3/8" x 2" | SA-240-304 | 6"   | FLUSH     | W/ BLD, GASKET & BOLTING ** |
| A1 1     | MANWAY            | 24"  | 150#   | RFSD     | SA-182-F304 | 5/20         | SA-312-TP304 | 3/8" x 2" | SA-240-304 | 6"   | FLUSH     | W/ BLD, GASKET & BOLTING ** |

| NUMBER | DESCRIPTION             | NO. | REVISIONS | BY  | CHK | DATE   |
|--------|-------------------------|-----|-----------|-----|-----|--------|
| B      | ISSUED FOR APPROVAL     |     |           | JSL | JSL | 8/3/17 |
| D      | ISSUED FOR CONSTRUCTION |     |           | JSL | JSL | 8/3/17 |

NOTICE

THIS DRAWING IS THE PROPERTY OF EROON, INC. OR ONE OF ITS AFFILIATED COMPANIES ("EROON"). NO COPIES OR REPRODUCTION OF THIS DRAWING SHALL BE MADE, IN WHOLE OR IN PART, FOR INFORMATION THEREON PUBLISHED OR USED OTHER THAN AS SPECIFICALLY AUTHORIZED BY EROON IN WRITING. ALL COPIES ARE TO BE RETURNED ON REQUEST OF EROON.



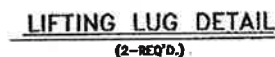
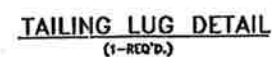
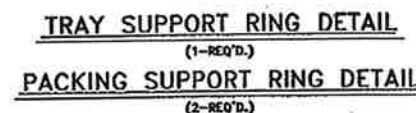
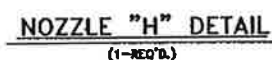
WELD PROCEDURES XXX

SPECIFICATIONS

|                          |   |
|--------------------------|---|
| CONSTRUCTION CODE        | ASME CODE SECTION VIII, DIV. 1 2004 EDITION, 2005 ADDENDA |
| YEAR BUILT               | 2007  |
| SERIAL NO.               | XX  |
| DESIGN PRESSURE INTERNAL | 2.5 PSIG @ TEMP. 200 °F MIN/MAX                           |
| DESIGN PRESSURE EXTERNAL | 2.5 PSIG @ TEMP. 200 °F MIN/MAX                           |
| HYDRO PRESSURE INTERNAL  | 142 PSIG  |
| CORROSION ALLOWANCE      | NONE  |
| RADIOGRAPHY              | NONE  |
| SHELL MATL. SPEC.        | SA-240-304  |
| FLANGE MATL. SPEC.       | SA-182-F304   |
| PIPE MATL. SPEC.         | SA-312-TP304  |
| REPAID MATL. SPEC.       | SA-240-304  |
| MONIT. -5' F             |   |
| NATIONAL B.O. NO.        | LATER   |
| PSIG @ TEMP.             | 200 °F MIN/MAX  |
| J.E. SHELL               | 208   |
| J.E. HEADS               | 208   |
| STRESS RELIEVE           | NONE  |
| HEAD MATL. SPEC.         | SA-240-304  |
| CPLG. MATL. SPEC.        | SA-182-F304   |
| BLW FIT. MATL. SPEC.     | SA-403-WF304  |
| STRUC. MATL. SPEC.       | A-36  |
| FLG. STUD SPEC.          | SA-182-87   |
| FLG. NUT SPEC.           | SA-194-2H   |
| GASKET DESC.             | BARLOCK 3000, PTFE OR EQUAL OR EPDM                       |
| INSULATION DESC.         | NONE  |
| INSPECTION BY            | HEB CO. & CUSTOMER  |
| SANDBLAST                | C.S. (ONLY) - PER SSPC-SP6 (COMMERCIAL BLAST)             |
| PAINT                    | C.S. (ONLY) - PRIME COAT WITH DIMECOAT 9 2-3 MIL DFT      |

**SpecFab** Specialty Process Fabricators, Inc.  
2353 Haining Road  
Vicksburg, MS 39183  
601-636-6888  
www.specfab.com

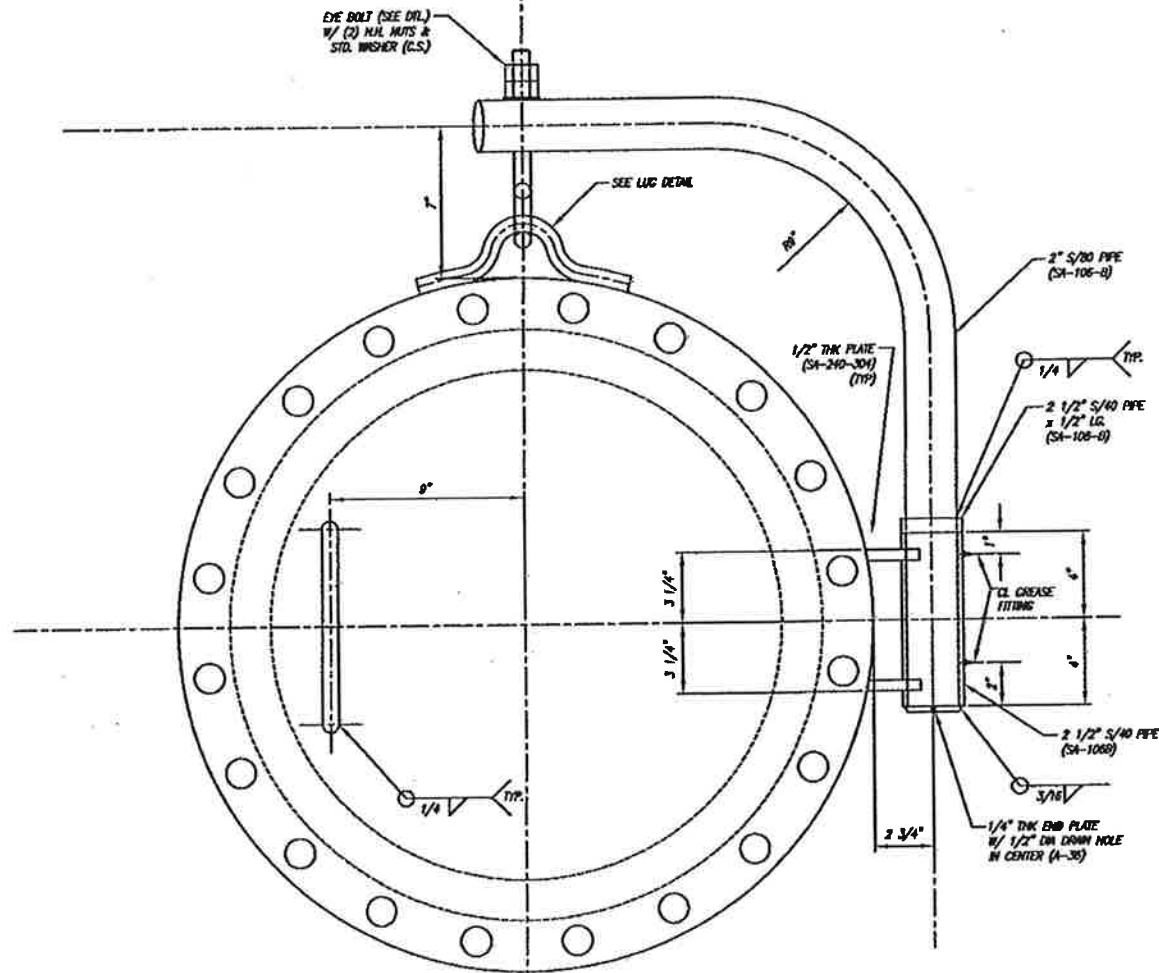
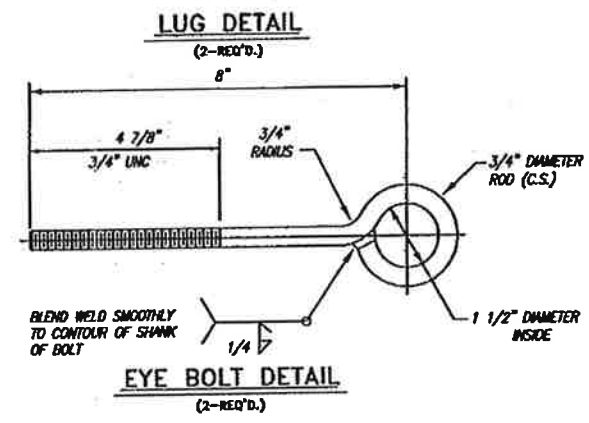
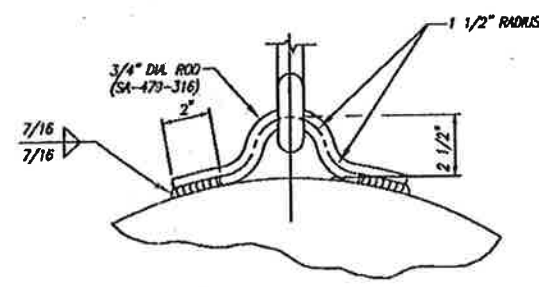
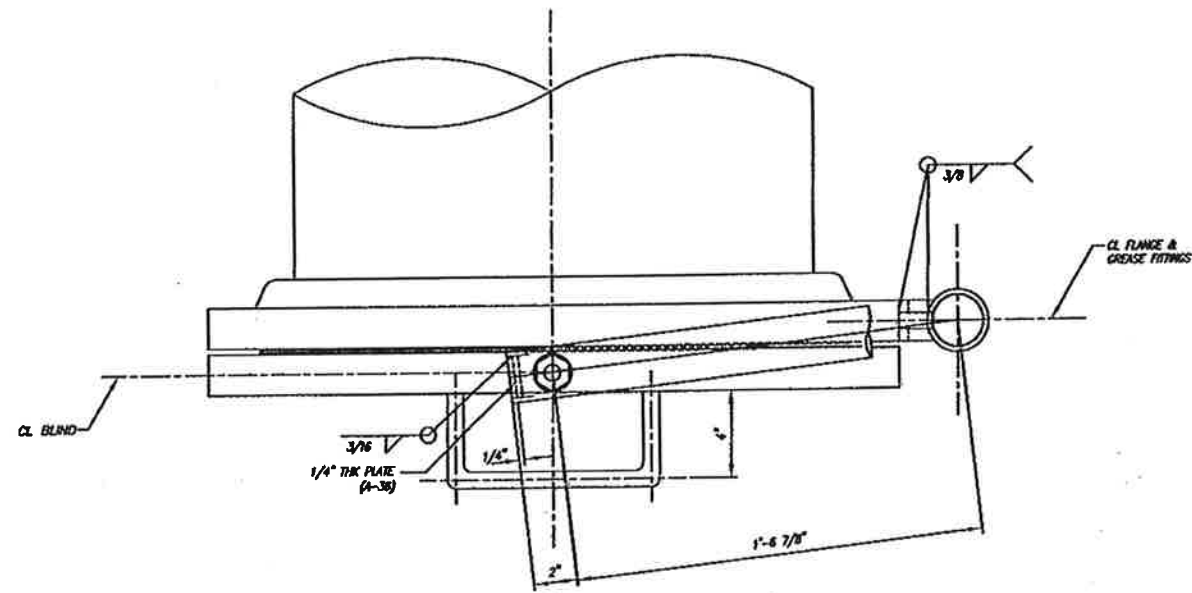
|                |  |         |  |   |  |           |  |
|----------------|--|---------|--|---|--|-----------|--|
| DESCRIPTION :  |  |         |  | 48" I.D. x 31'-11" SEAM / SEAM<br>VENT GAS SCRUBBER<br>ITEM NO.: C3202<br>SPECFAB JOB # 2007112 |  |           |  |
| CUSTOMER:      |  |         |  | BUNGE-ERGON VICKSBURG<br>VICKSBURG, MS.   |  |           |  |
| SCALE : N.T.S. |  | DATE    |  | P.O. No. : 61310-4500140663   |  |           |  |
| DRAWN : JSL    |  | 2/16/07 |  | FILE No. : 2007112  |  |           |  |
| CHECK : JSL    |  | 2/20/07 |  | DWG. NO.  |  | SHEET NO. |  |
| APVD :         |  |         |  | V-074-103   |  | 1 OF 5    |  |
|                |  | B       |  |   |  | A         |  |



SPECFAB JOB # 2007112


THIS DRAWING IS THE PROPERTY OF EROCON, INC. OR ONE OF ITS AFFILIATE COMPANIES ("EROCON"). NO COPIES OR REPRODUCTION OF THIS DRAWING SHALL BE MADE, IN WHOLE OR IN PART, NOR INFORMATION THEREON PUBLISHED OR USED OTHER THAN AS SPECIFICALLY AUTHORIZED BY EROCON. ALL RIGHTS AND ALL COPIES ARE TO BE RETURNED ON REQUEST OF EROCON.

|         |         |            |           |    |
|---------|---------|------------|-----------|----|
| SCALE : | DATE :  | FILE NO. : | SHEET NO. | RE |
| DRAWN : | 2/16/01 | 2007112    |           |    |
| CHECK : | 2/20/01 | DWG. NO.   | SHEET NO. | RE |
| APVD :  |         | V-074-103  | 2 OF 5    | 0  |



SPECFAB JOB # 2007112

| REFERENCE DRAWINGS  |                         | REVISIONS |             |    |        |
|---|-------------------------|-----------|-------------|----|--------|
| NUMBER  | DESCRIPTION             | NO.       | DESCRIPTION | BY | DATE   |
| B   | ISSUED FOR APPROVAL     | JSL       | JSL         |    |        |
| D   | ISSUED FOR CONSTRUCTION | JSL       | JSL         |    | 8/3/07 |
| NOTICE  |                         |           |             |    |        |
| THIS DRAWING IS THE PROPERTY OF EROCO, INC. OR ONE OF ITS AFFILIATED COMPANIES ("EROCO"). NO COPIES OF OR REPRODUCTION OF THIS DRAWING SHALL BE MADE, IN WHOLE OR IN PART, NOR INFORMATION THEREON PUBLISHED OR USED OTHER THAN AS SPECIFICALLY AUTHORIZED BY EROCO. IN WRITING. ALL COPIES ARE TO BE RETURNED ON REQUEST OF EROCO. |                         |           |             |    |        |

|   |               |  |                  |
|---|---------------|--|------------------|
| S/C: 2007112  | ITEM: C3202   | ONE  | REQ'D.           |
|  |               | Specialty Process Fabricators, Inc.<br>2353 Haining Road<br>Vicksburg, Ms 39183<br>601-636-6888<br>www.specfab.com |                  |
|   |               | DESCRIPTION: 48" I.D. x 31'-11" SEAM / SEAM<br>VENT GAS SCRUBBER<br>ITEM: C3202<br>SPECFAB JOB # 2007112           |                  |
| CUSTOMER: BUNGE-ERCON VICKSBURG<br>VICKSBURG, MS.                                     |               |  |                  |
| SCALE: NONE   | DATE: 7/16/07 | P.O. No.: 61310-4500140663   |                  |
| DRAWN: JSL  | 2/20/07       | FILE No.: 2007112  |                  |
| CHECK: JSL  |               | DWG. NO. V-074-103   | SHEET NO. 3 OF 5 |
| APVD:   |               |  | REV. 0           |

WELD  
PROCEDURES

① E-154;E-137

③ E-138

⑤

⑦

⑨

⑪

⑬

② E-137;E-102;E-148

④ E-141;E-142;E-139

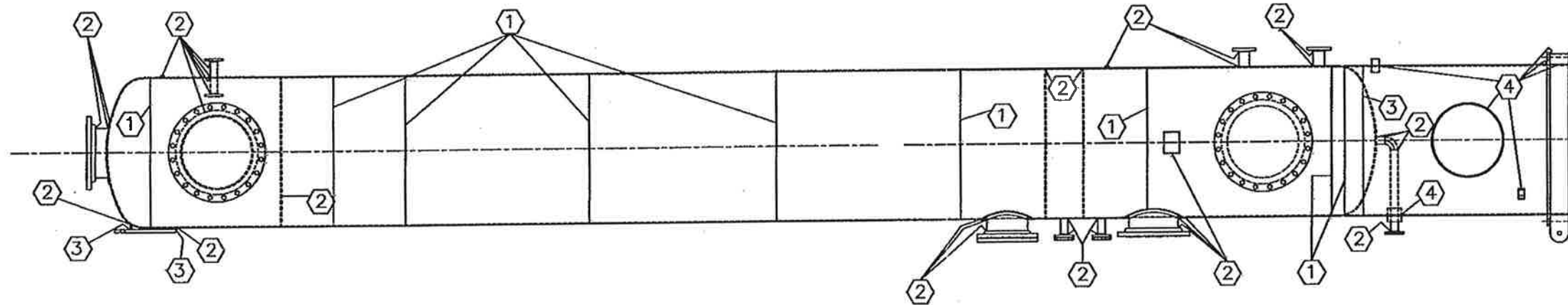
⑥

⑧

⑩

⑫

⑭



SPECFAB JOB # 2007112

ORIGINATION: BRIAN DYKES

DATE: REV: 0

S/O NUMBER:

CUSTOMER:

PO NUMBER: 61310-4500140663

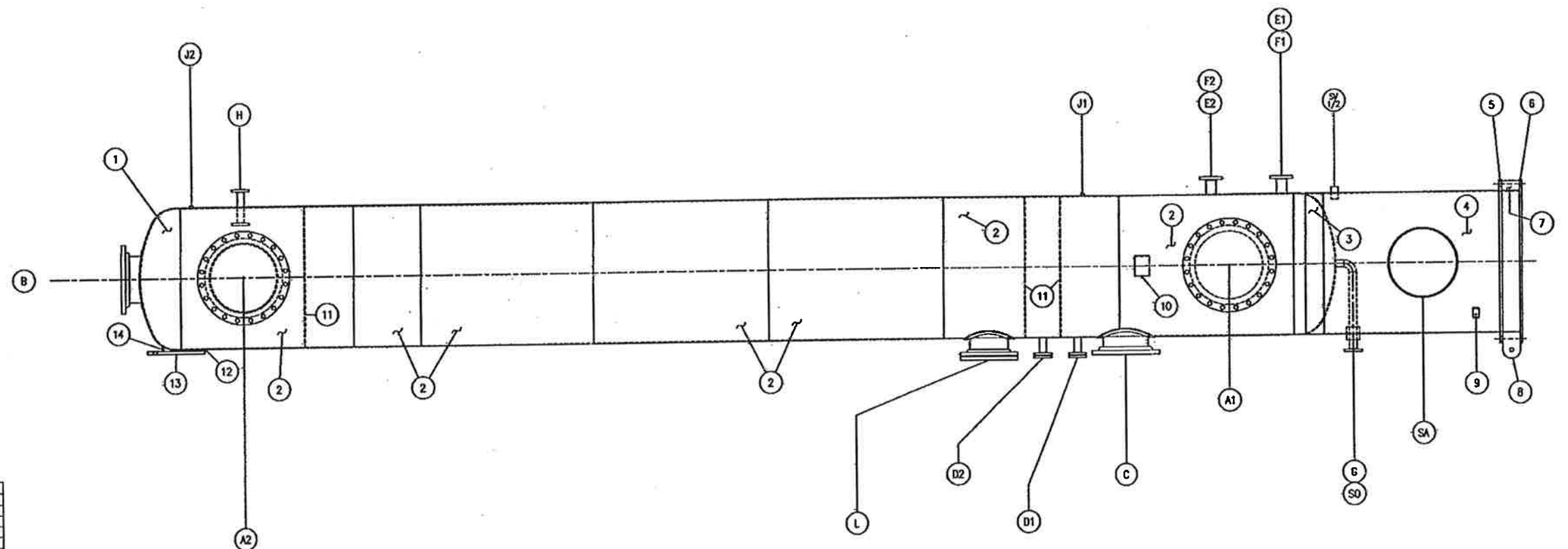
ITEM NUMBER: C 3202

| REFERENCE DRAWINGS |                         | REVISIONS |             |    |        |
|--------------------|-------------------------|-----------|-------------|----|--------|
| NUMBER             | DESCRIPTION             | NO.       | DESCRIPTION | BY | DATE   |
| 0                  | ISSUED FOR CONSTRUCTION | BD        | DM          |    | 8-2-07 |
|                    |                         |           |             |    |        |
|                    |                         |           |             |    |        |
|                    |                         |           |             |    |        |
|                    |                         |           |             |    |        |
|                    |                         |           |             |    |        |
|                    |                         |           |             |    |        |
|                    |                         |           |             |    |        |
|                    |                         |           |             |    |        |

**NOTICE**  
THIS DRAWING IS THE PROPERTY OF ERCON, INC. OR ONE OF ITS AFFILIATED COMPANIES ("ERCON"). NO COPIES OF OR REPRODUCTION OF THIS DRAWING SHALL BE MADE, IN WHOLE OR IN PART, NOR INFORMATION THEREON PUBLISHED OR USED OTHER THAN AS SPECIFICALLY AUTHORIZED BY ERCON IN WRITING. ALL COPIES ARE TO BE RETURNED ON REQUEST OF ERCON.

|   |              |  |                  |
|---|--------------|--|------------------|
| S/O: 2007112  | ITEM: C-3202 | ONE  | REV'D.           |
|  |              | Specialty Process Fabricators, Inc.<br>2353 Haining Road<br>Vicksburg, Ms 39183<br>601-636-6888<br>www.specfab.com |                  |
|   |              | DESCRIPTION: 48" I.D. X 387" TAN/TAN<br>VENT GAS SCRUBBER<br>ITEM: C3202<br>WELD MAP                               |                  |
| CUSTOMER: BUNGE-ERCON VICKSBURG VICKSBURG, MS.  |              |  |                  |
| SCALE: N.T.S.   | DATE: 8-2-07 | P.O. No.: 61310-4500140663   |                  |
| DRAWN: BD   |              | FILE No.: 2007112  |                  |
| CHECK:  |              | DWG. NO. V-074-103   | SHEET NO. 4 OF 5 |
| APVD:   |              |  | REV. 0           |




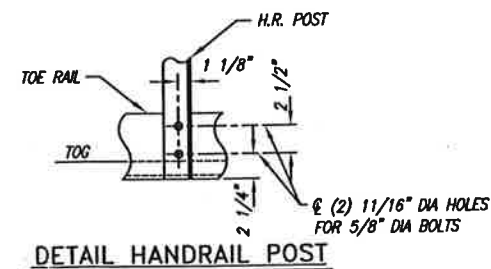


SPECFAB JOB # 2007112

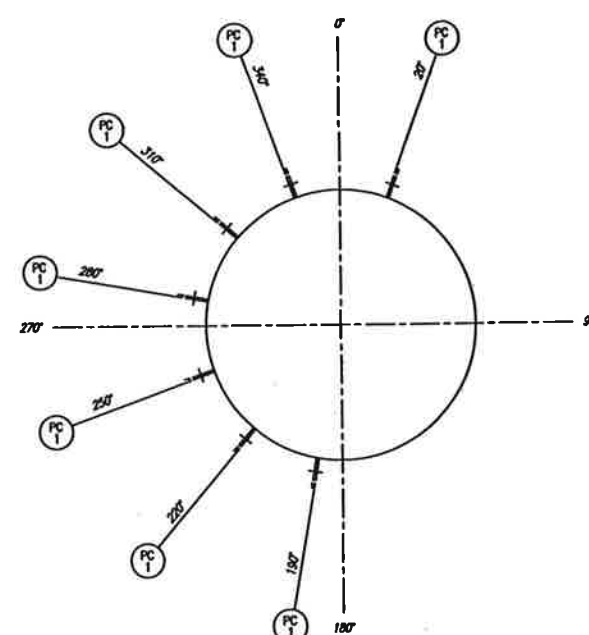
| BUBBLE | DESCRIPTION   | QTY. | U/M |
|--------|---|------|-----|
| 1      | HEAD, ELLIPTICAL, 48" ID X 0.19" MIN TH                       | 2    | EA  |
| 2      | SHELL PLATE, 1/4" SA-240 T304, 48-1/2" OD ROLLUP              | 7    | EA  |
| 3      | FLAT BAR, 3/8" X 6" SA-240 T304, 48-1/2" OD ROLLUP            | 1    | EA  |
| 4      | SKRT PLATE, 3/8" A36, 48-1/2" OD X 5' 7-3/16" LONG ROLLUP     | 1    | EA  |
| 5      | BASE RING, 1" A36, 44" ID X 56-3/4" OD                        | 1    | EA  |
| 6      | COMPRESSION RING, 1" A36, 48-1/2" ID X 56-3/4" OD             | 1    | EA  |
| 7      | GUSSET PLATE, 3/8" A36, APPROX 3-3/4" X 6"                    | 16   | EA  |
| 8      | TAILING LUG, 1" A36, APPROX 6" X 9"                           | 1    | EA  |
| 9      | GROUND LUG, 3/8" A36, APPROX 2" X 5"                          | 2    | EA  |
| 10     | NAME PLATE BRACKET, A240 T304, APPROX 7" X 7"                 | 1    | EA  |
| 11     | PACKING/TRAY SUPPORT RING, 1/4" SA-240 T304, 5'-6" ID X 4" OD | 3    | EA  |
| 12     | REPAD, 1/2" SA-240 T304, APPROX 7" X 6"                       | 2    | EA  |
| 13     | LIFT LUG, 1" A36, APPROX 5" X 20"                             | 2    | EA  |
| 14     | BRACE PLATE, 1/2" SA-240 T304, APPROX 1-1/4" X 5"             | 2    | EA  |
| A1, A2 | 24" MANNWAY   | 2    | EA  |
|        | FLANGE, 24" 150# RF SO, SA 182 F304                           | 2    | EA  |
|        | FLANGE, 24" 150# RF BLND SA 182 F304                          | 2    | EA  |
|        | PIPE 24" STD SA 312 TP304                                     | 2    | FT  |
|        | REPAD, 3/8" X 2" SA-240 T304                                  | 2    | EA  |
|        | GASKET, 24" GARLOCK 3000 1/8" THICK                           | 4    | EA  |
|        | STUD, 1-1/4" DIA X 7-1/2" LG, SA193 B7                        | 40   | EA  |
|        | NUT, 1-1/4", SA194 2H   | 80   | EA  |
|        | DAVIT ARM, 2" S80 SA106B                                      | 2    | EA  |
|        | PIPE, 2-1/2" A106B S40  | 2    | FT  |
|        | EYEBOLT, 3/4" DIA, CS, 1-1/2" DIA EYE                         | 2    | EA  |
|        | NUT, HEAVY HEX, 3/4" UNF CS                                   | 4    | EA  |
|        | WASHER, FLAT, 3/4" CS   | 2    | EA  |
|        | ROD, 3/4" SA179-304   | 6    | FT  |
| B, C   | 18" NOZZLE  | 2    | EA  |
|        | FLANGE, 18" 150# RF SO, SA 182 F304                           | 2    | EA  |
|        | PIPE 18" STD SA 312 TP304                                     | 1.5  | FT  |
|        | REPAD, 1/4" X 2" SA-240 T304                                  | 2    | EA  |
|        | GASKET, 18" GARLOCK 3000 1/8" THICK                           | 2    | EA  |
| D1, D2 | 2" NOZZLE (2 REQUIRE BLINDS, ONE ALSO NEEDS ELBOW)            | 4    | EA  |
| G, H   | FLANGE, 2" 150# RF SO, SA 182 F304                            | 4    | EA  |
|        | FLANGE, 2" 150# RF BLND SA 182 F304                           | 2    | EA  |
|        | PIPE 2" STD SA 312 TP304                                      | 2.5  | FT  |
|        | ELBOW, 2" LR 90, S405, SA403-WP304S (G)                       | 1    | EA  |
|        | GASKET, 2" GARLOCK 3000 1/8" THICK                            | 6    | EA  |
|        | STUD, 5/8" DIA X 3-1/4" LG, SA193 B7                          | 8    | EA  |
|        | NUT, 5/8", SA194 2H   | 16   | EA  |
| E1, E2 | 3" NOZZLE   | 4    | EA  |
| F1, F2 | FLANGE, 3" 150# RF SO, SA 182 F304                            | 4    | EA  |
|        | PIPE 3" STD SA 312 TP304                                      | 2.5  | FT  |
|        | GASKET, 3" GARLOCK 3000 1/8" THICK                            | 4    | EA  |
| J1, J2 | 1/2" 3000# HALF COUPLING, SA182 F304                          | 2    | EA  |
| K      | 3/4" 3000# HALF COUPLING, SA182 F304                          | 1    | EA  |
| L      | 12" NOZZLE  | 1    | EA  |
|        | FLANGE, 12" 150# RF SO, SA 182 F304                           | 1    | EA  |
|        | FLANGE, 12" 150# RF BLND SA 182 F304                          | 1    | EA  |
|        | PIPE 12" STD SA 312 T304S                                     | 1    | FT  |
|        | REPAD, 1/4" X 2" SA-240 T304                                  | 1    | EA  |
|        | GASKET, 12" GARLOCK 3000 1/8" THICK                           | 2    | EA  |
|        | STUD, 7/8" DIA X 4-3/4" LG, SA193 B7                          | 12   | EA  |
|        | NUT, 7/8", SA194 2H   | 24   | EA  |
| SV     | SKRT VENTS  | 2    | EA  |
|        | PIPE, 2" A106 B, SCH 40, APPROX 4-1/2" LONG                   | 2    | EA  |
| SA     | SKRT ACCESS   | 1    | EA  |
|        | PIPE, 24" A106 B, STD, APPROX 8" LONG                         | 1    | EA  |
| SO     | SKRT OPENING  | 1    | EA  |
|        | PIPE, 4" A106 B, SCH 40, APPROX 4-1/2" LONG                   | 1    | EA  |

| REFERENCE DRAWINGS   |                         | REVISIONS |             |    |          |
|--|-------------------------|-----------|-------------|----|----------|
| NUMBER   | DESCRIPTION             | NO.       | DESCRIPTION | BY | DATE     |
| 0  | ISSUED FOR CONSTRUCTION | BD        | BD          | BD | 8-3-2007 |
| NOTICE   |                         |           |             |    |          |
| THIS DRAWING IS THE PROPERTY OF EROON, INC. OR ONE OF ITS AFFILIATED COMPANIES ("EROON"). NO COPIES OF OR REPRODUCTION OF THIS DRAWING SHALL BE MADE, IN WHOLE OR IN PART, NOR INFORMATION THEREON PUBLISHED OR USED OTHER THAN AS SPECIFICALLY AUTHORIZED BY EROON IN WRITING. ALL COPIES ARE TO BE RETURNED ON REQUEST OF EROON. |                         |           |             |    |          |

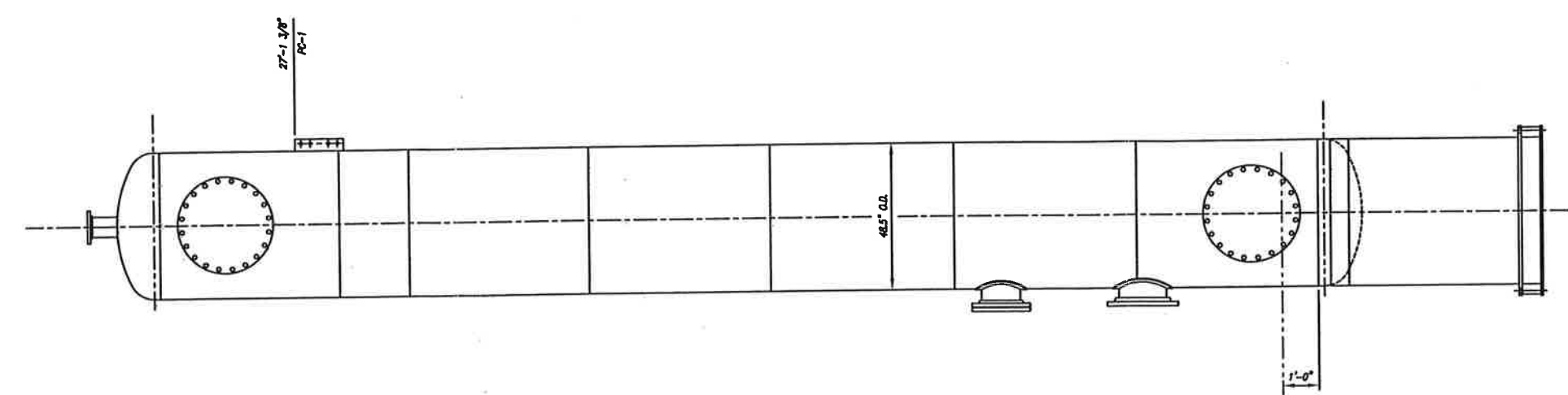
|   |               |  |                  |
|---|---------------|--|------------------|
| S/O: 2007112  | ITEM: C3202   | ONE  | REV.:            |
|  |               | Specialty Process Fabricators, Inc.<br>2353 Haining Road<br>Vicksburg, MS 39183<br>601-636-6888<br>www.specfab.com |                  |
|   |               | DESCRIPTION: 48" I.D. x 31'-11" SEAM / SEAM<br>VENT GAS SCRUBBER<br>ITEM: C3202<br>BILL OF MATERIALS               |                  |
| CUSTOMER: BUNGE-ERCON VICKSBURG VICKSBURG, MS.  |               |  |                  |
| SCALE: NONE   | DATE: 8/31/07 | P.O. No.: 61310-4500140683   |                  |
| DRAWN: 99   | 8/31/07       | FILE No.: 2007112  |                  |
| CHECK: 99   | 8/31/07       | DWG. NO. V-074-103   | SHEET NO. 5 OF 5 |
| APVD:   |               |  | REV. 0           |



|   |             |   |                  |
|---|-------------|---|------------------|
| S/O: 2007112  | ITEM: C3202 | ONE   | REQ'D.           |
|  <b>SpecFab</b><br><small>AN ERGON COMPANY</small> |             | Specialty Process Fabricators, Inc.<br>2353 Haining Road<br>Vicksburg, Ms 39183<br>601-636-6888<br><a href="http://www.specprofab.com">www.specprofab.com</a> |                  |
| DESCRIPTION : 48" I.D. x 31'-11" SEAM / SEAM<br>VENT GAS SCRUBBER<br>ITEM: C3202<br>LADDERS & PLATFORMS                                 |             |   |                  |
| CUSTOMER: BUNGE-ERGON VICKSBURG<br>VICKSBURG, MS.   |             |   |                  |
| SCALE : NONE  | DATE 7/7/07 | P.O. No. :  |                  |
| DRAWN : SJ  | 7/7/07      | FILE No. :  |                  |
| CHECK : JS  | 7/7/07      | DWG. NO. S-074-046  | SHEET NO. 2 OF 3 |
| APVD :  |             |   | REV. 1           |

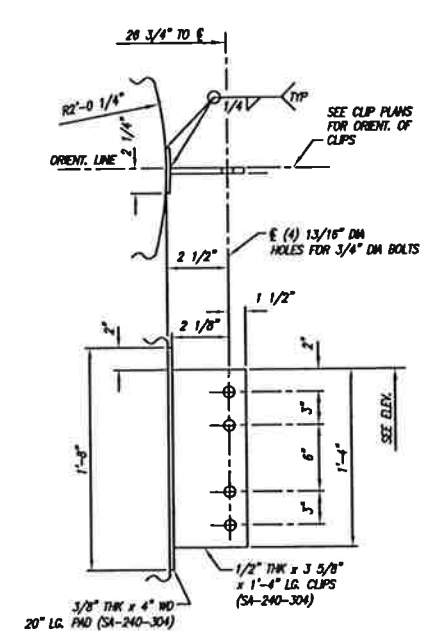


PLAN OF PC-1 CLIPS



WORKLINE  
ALL DIMENSIONS ARE  
MEASURED FROM THIS LINE  
UNLESS NOTED OTHERWISE.

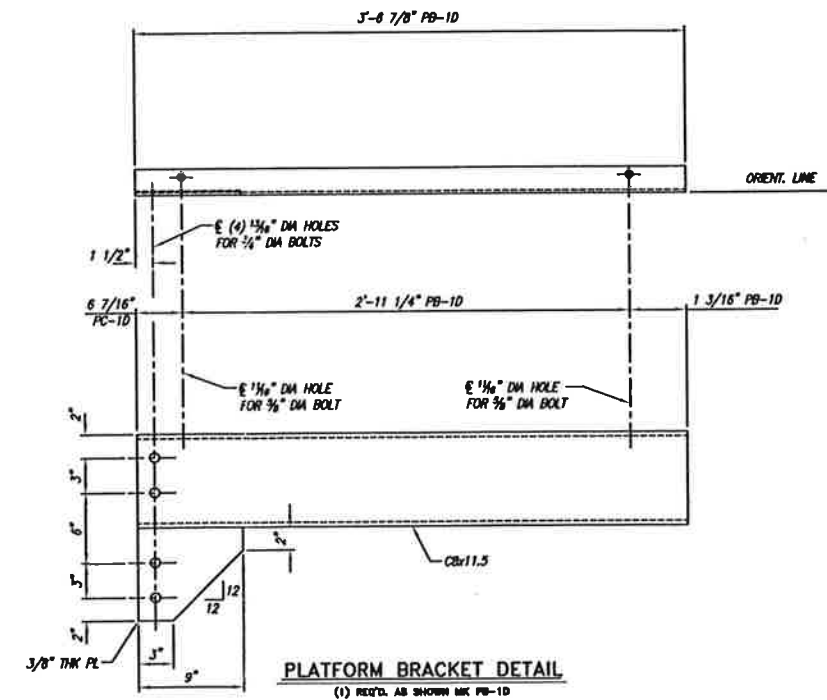
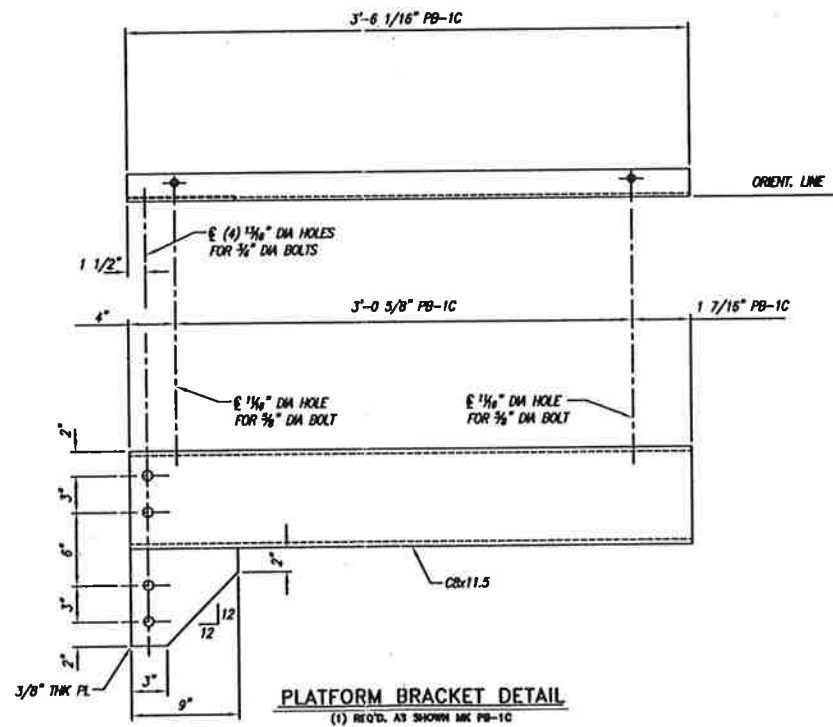
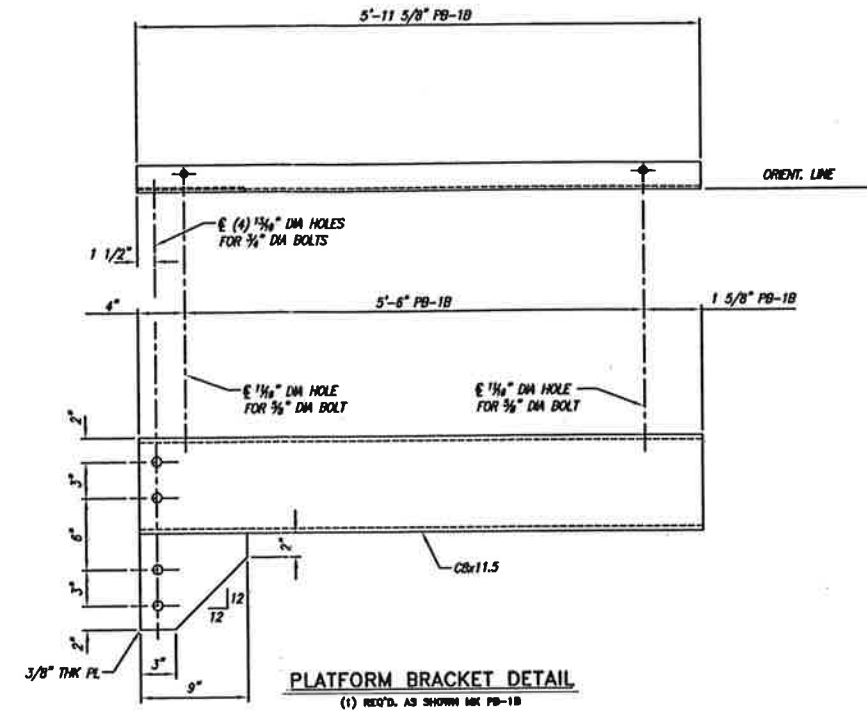
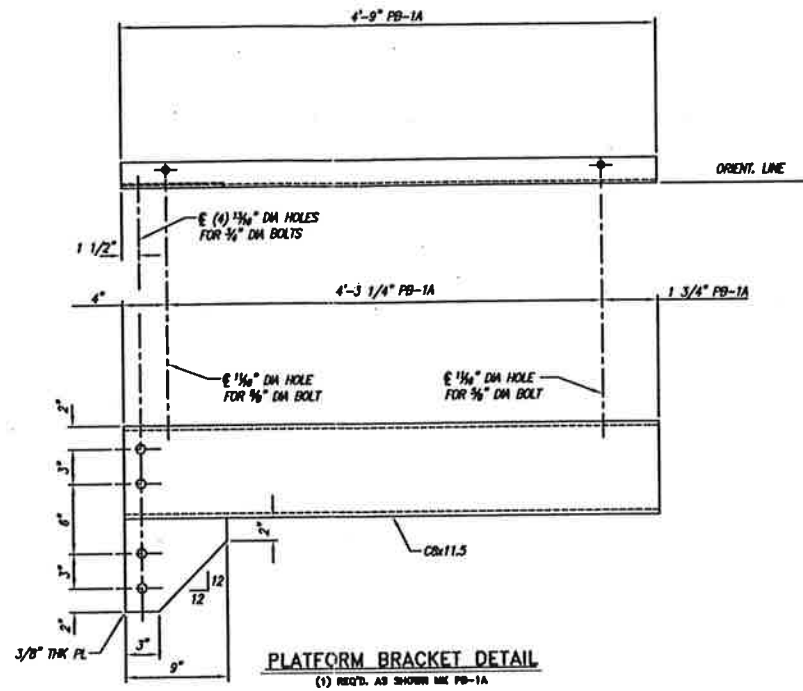
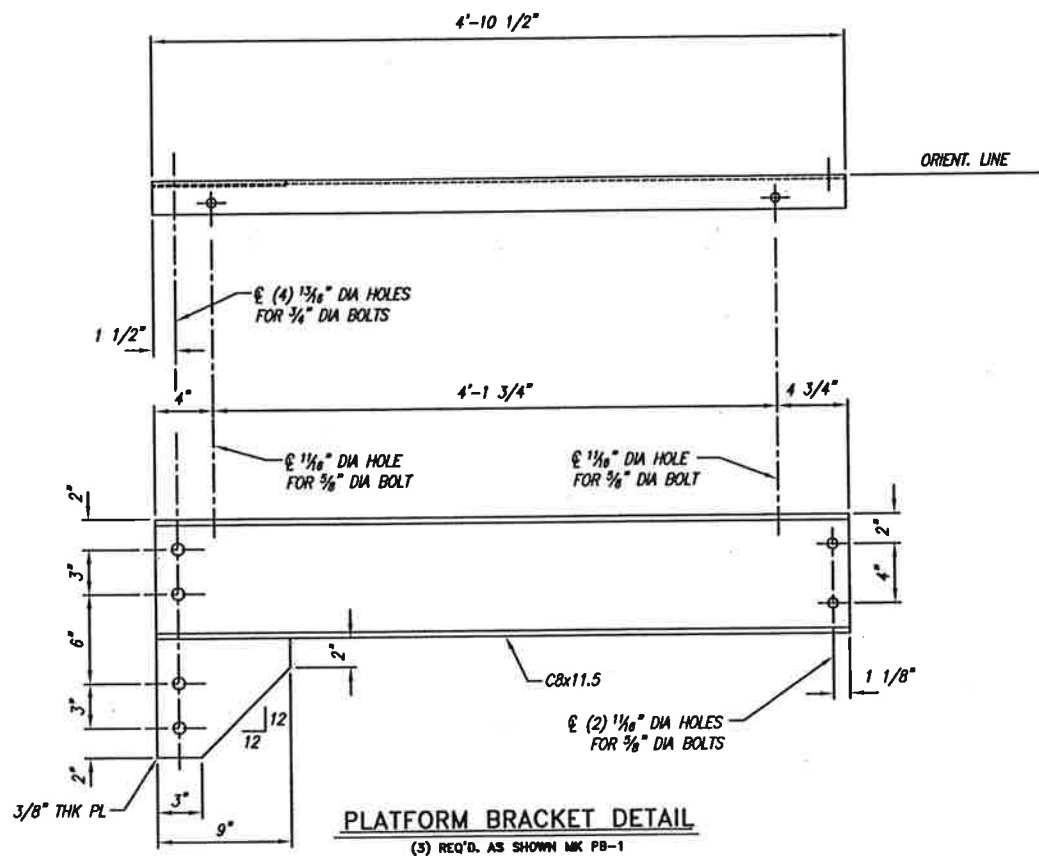
ELEVATION  
SEE PLAN FOR TRUE ORIENTATION



DETAIL PLATFORM SUPPORT CLIPS  
(7) RECD. MFG. PC-1

| REFERENCE DRAWINGS   |                     | REVISIONS |             |    |          |
|--|---------------------|-----------|-------------|----|----------|
| NUMBER   | DESCRIPTION         | NO.       | DESCRIPTION | BY | DATE     |
| 0  | ISSUED FOR APPROVAL | JSL       | JSL         |    |          |
| 1  | AS-BUILT            | BGD       | BGD         |    | 11/09/07 |
| NOTICE   |                     |           |             |    |          |
| THIS DRAWING IS THE PROPERTY OF EROON, INC. OR ONE OF ITS AFFILIATED COMPANIES ("EROON"). NO COPIES OF OR REPRODUCTION OF THIS DRAWING SHALL BE MADE, IN WHOLE OR IN PART, NOR INFORMATION THEREON PUBLISHED OR USED OTHER THAN AS SPECIFICALLY AUTHORIZED BY EROON IN WRITING. ALL COPIES ARE TO BE RETURNED ON REQUEST OF EROON. |                     |           |             |    |          |

|              |                 |   |                  |
|--------------|-----------------|---|------------------|
| S/D: 2007112 | ITEM: C3202     | ONE   | REQD.            |
|              |                 | Specialty Process Fabricators, Inc.<br>2353 Haining Road<br>Vicksburg, Ms 39183<br>601-636-6888<br>www.specprofab.com |                  |
|              |                 | DESCRIPTION : 48" I.D. x 31'-11" SEAM / SEAM<br>VENT GAS SCRUBBER<br>ITEM: C3202<br>LADDERS & PLATFORMS               |                  |
| CUSTOMER:    |                 | BUNGE-ERGO VICKSBURG<br>VICKSBURG, MS.  |                  |
| SCALE : NONE | DATE : 11/17/07 | P.O. No. :  |                  |
| DRAWN : JS   | FILE No. :      | DWG. NO. :  | SHEET NO. 1 OF 3 |
| CHECK : JS   | 11/17/07        | S-074-046   | REV. 1           |
| APVD :       |                 |   |                  |



| REFERENCE DRAWINGS   |                     | REVISIONS |             |    |          |
|--|---------------------|-----------|-------------|----|----------|
| NUMBER   | DESCRIPTION         | NO.       | DESCRIPTION | BY | DATE     |
| 0  | ISSUED FOR APPROVAL | JSL       | JSL         |    |          |
| 1  | AS-BUILT            | BGD       | BGD         |    | 11/09/07 |
| NOTICE   |                     |           |             |    |          |
| THIS DRAWING IS THE PROPERTY OF ERCON, INC. OR ONE OF ITS AFFILIATED COMPANIES ("ERCON"). NO COPIES OF OR REPRODUCTION OF THIS DRAWING SHALL BE MADE, IN WHOLE OR IN PART, NOR INFORMATION THEREON PUBLISHED OR USED OTHER THAN AS SPECIFICALLY AUTHORIZED BY ERCON IN WRITING. ALL COPIES ARE TO BE RETURNED ON REQUEST OF ERCON. |                     |           |             |    |          |

|  |              |  |                  |
|--|--------------|--|------------------|
| S/O: 2007112   | ITEM: C3202  | ONE  | REQ'D.           |
|                   |              | Specialty Process Fabricators, Inc.<br>2353 Haining Road<br>Vicksburg, Ms 39183<br>601-636-6888<br>www.specfab.com |                  |
| DESCRIPTION: 48" I.D. x 31'-11" SEAM / SEAM<br>VENT GAS SCRUBBER<br>ITEM: C3202<br>LADDERS & PLATFORMS |              |  |                  |
| CUSTOMER: BUNGE-ERCON VICKSBURG<br>VICKSBURG, MS.  |              |  |                  |
| SCALE: NONE  | DATE: 7/6/07 | P.O. No.:  |                  |
| DRAWN: JB  | FILE No.:    | DWG. NO. S-074-046   | SHEET NO. 3 OF 3 |
| CHECK: JB  | DATE: 7/7/07 |  | REV. 1           |
| APVD:  |              |  |                  |