

DESIGN DATA

CODE: ASME VIII DIV 1 2008A
 SPECIFIC GRAVITY/CONTENT: 0.25
 DESIGN PRESS.: 75/PSI (gauge) DESIGN TEMP.: 450 (F)
 OPERATING PRESS.: 40 (gauge) OPERATING TEMP.: 325 (F)
 WIND: -20T
 CORROSION ALLOWANCE: 1/16"
 NO. & TYPE OF TESTS: N/A
 STRESS RELIEF: NO
 RT: NONE (H. TEST PRESSURE: 88 PSIG)
 CERTIFY FROM IMPACT TESTING PER UG-20 (F)
 WIND SPEC. WIND SPEED: 20 MPH STORM: A_s = 0.05
 WIND IMPROVISE FACTOR: 1.15 A_s = 0.05
 WIND EXPOSURE: C
 WEIGHT EMPTY: 11500 (lbs) WEIGHT FLOODED: 57000 (lbs)
 VOLUME: 8400 (gal)
 WEIGHT INSULATION: _____

NOZZLE LOGS

NO	P (lbs)	M ₁ (lb-in)	M ₂ (lb-in)
N1	400	5103	2319
N2	400	5103	2319

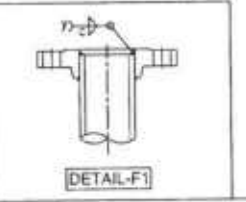
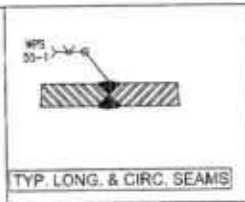
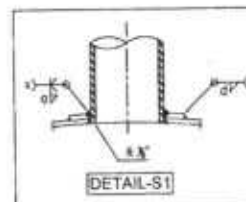
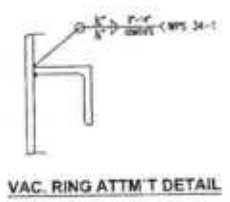
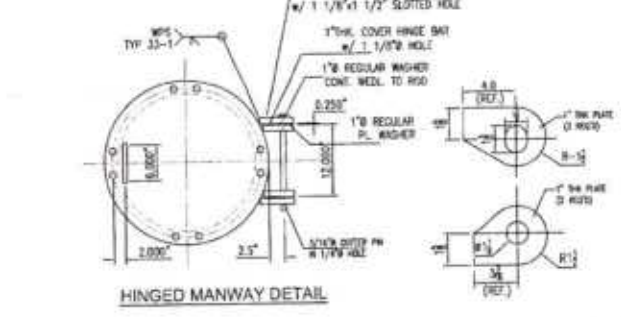
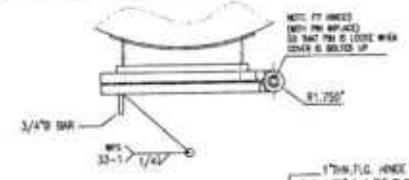
MATERIALS OF CONSTRUCTION

ITEM	MATERIAL	COMMENTS
SHELL	SA-516 70	
HEADS	SA-516 70	2:1 ELLIPTICAL
FLANGES	SA-193	
NOZZLE NECK	SA-193 0-8	
RE FINS	SA-516 70	
VAC. RINGS	SA/CSA 340.21-44W	
SADDLE LIFTING LUGS	SA/CSA 340.21-44W	
WEAR PLATE	SA-516 70	
GASKETS	RTG006	
BELTING	SA-193-07/SA-194-2T	
INSULATION	J FIBER GLASS	BY NIS

NOZZLE SCHEDULE

NO	SIZE	RATING	TYPE	SHALL THIN	RE PAD	FRGJ	DERIVAGE	REMARKS
N1	1/2"	150#	RFSD	STD. WALL	1/4" x 1 1/2"	8"	INLET	FR TP-4115
N2	1/2"	150#	RFSD	STD. WALL	1/4" x 1 1/2"	8"	OUTLET	TO TM-4301/TM-4302
N3	2"	150#	RFSD	STD. WALL	1/4" x 1 1/2"	8"	MANWAY	HINGED

- NOTES:**
- WIND AND SEISMIC LOAD PER ASCE 7-05. SHOW LOAD: P_s = 20 PSF.
 - VESSEL TO BE CLEANED INSIDE AND OUTSIDE, FREE OF DIRT, GRAVEY, MILL SCALE AND WELD SPATTER.
 - ALL NOZZLES SHALL BE SQUARE, PLUMB, AND ACCURATELY LOCATED TO THE FOLLOWING TOLERANCES:
 - A) OVERALL DIAMETER AND HEIGHT: ± 1/2"
 - B) FLANGES: ± 1/4"
 - C) NOZZLE LOCATION: ± 1/4" FROM CENTERLINES
 - D) NOZZLE COUPLER: ± 1/8" FROM OUTSIDE SHELL TO FACE OF NOZZLE
 - E) FLANGE FACES: 1/2" IN ANY PLANE
 - BOLT HOLES IN FLANGES TO STAINLESS VESSEL, CENTER LINES.
 - REFERENCE DRAWINGS: 8019-MD-4301 Rev. 0
 - PAINT: EXTERIOR SURFACE: BLASTED AND ONE COAT OF RED OXIDE PRIMER PER TNS SPEC. 07-1



NOZZLE WELDING DETAILS

NO	DETAIL	PROJECT	WELD SIZE			W/F			REPAD	
			B	C	d	x	y	z		
N1/N2	F1	S1	1/4"	-	5/16"	3/16"	33-1, 34-1	34-1	34-1	1/4" x 1 1/2" WEE
N3	F1	S1	1/4"	-	5/16"	3/16"	33-1, 34-1	34-1	34-1	1/4" x 1 1/2" WEE



B	2006/11/14	PER CUSTOMER NOTES	BVP	RR
A	2006/06/05	RELEASE FOR APPROVAL	AP	RR
REV	DATE	DESCRIPTION	OWG BY	APPR BY
ALPS WELDING LIMITED TORONTO, CANADA				
PROJECT NO: TP-4301 73338-05			PROJECT NAME: THERMAL KINETICS SYSTEMS, LLC, BUFFALO, NY CENTRAL ILLINOIS	
TITLE: 72" O.D. ACCUMULATOR - INLET (GENERAL ASSEMBLY)			SHEET ORDERED: 3479	
ISSUED BY: AP	DATE: 2006/10/05	SCALE: NTS	SHEET: 1 of 1	DRAWING NO: CDK-2106

RECEIVED
 NOV 22 2006
 BY PROJECT #