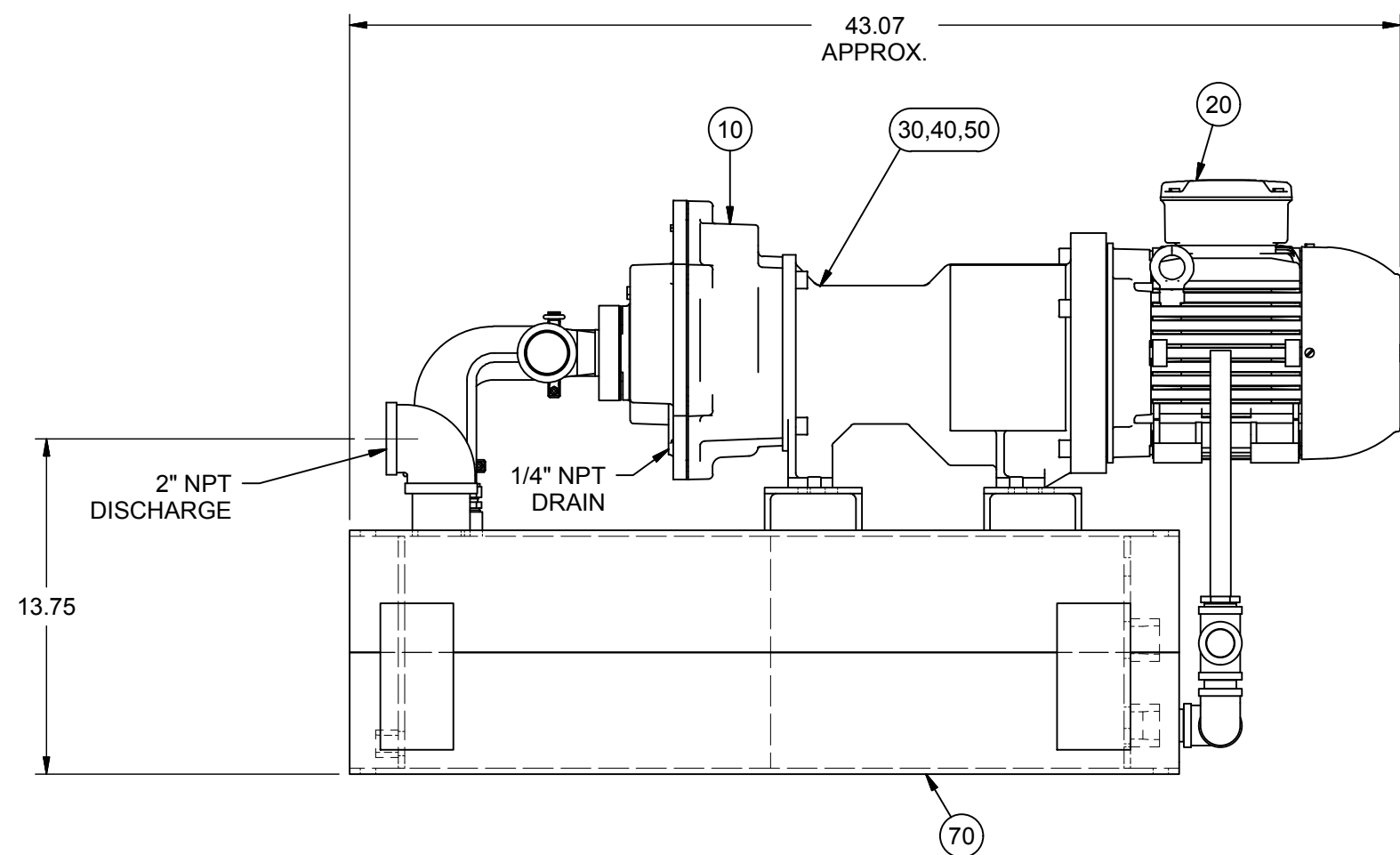
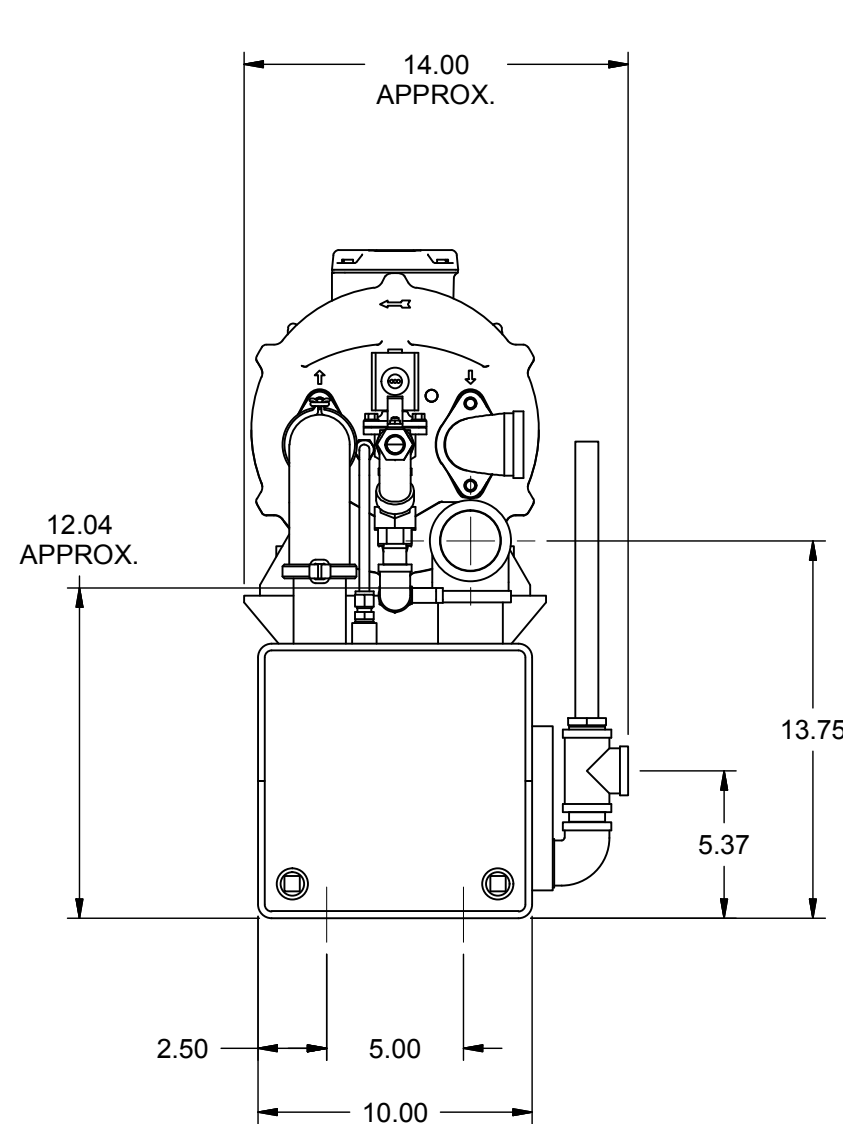


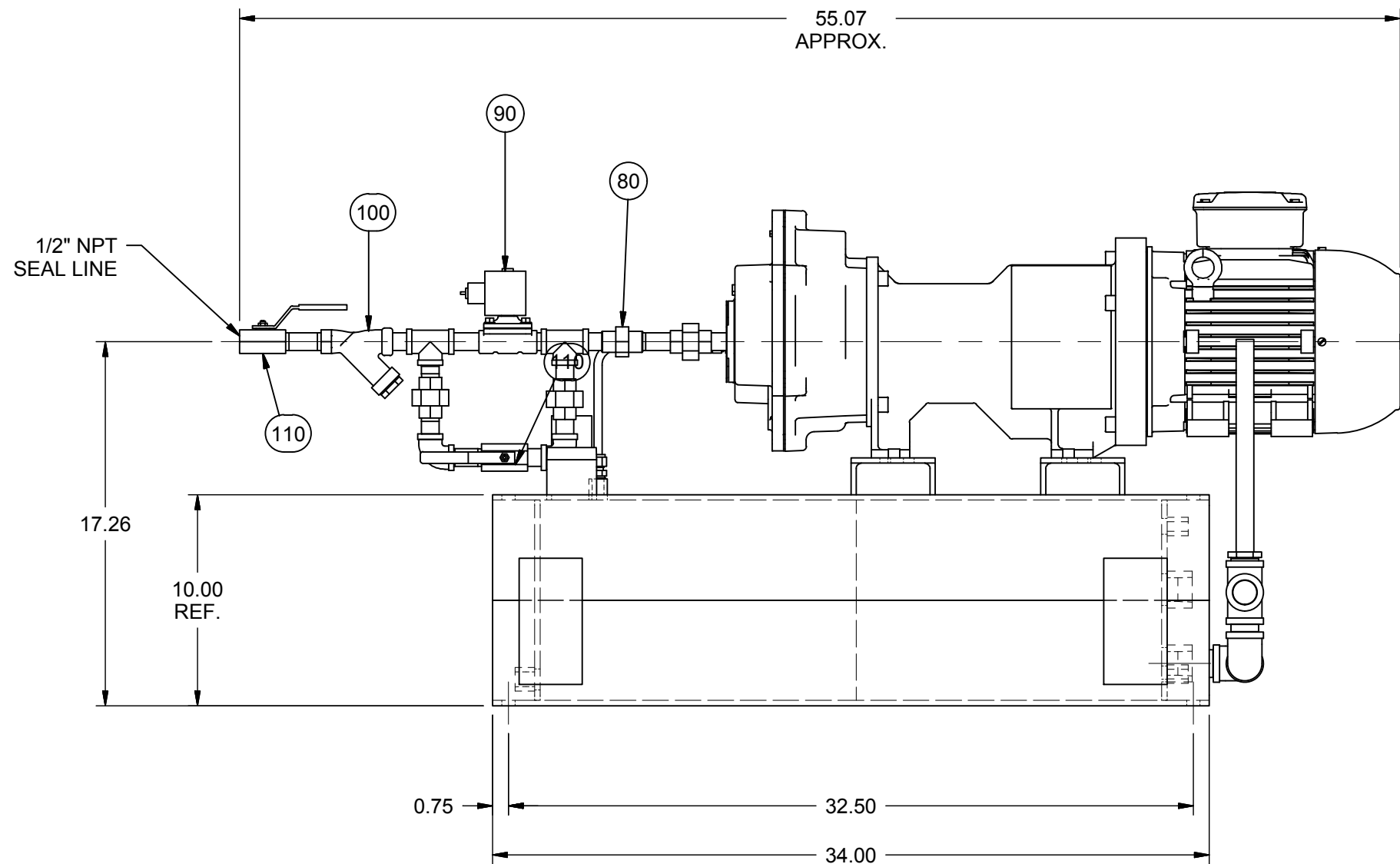
PLAN VIEW



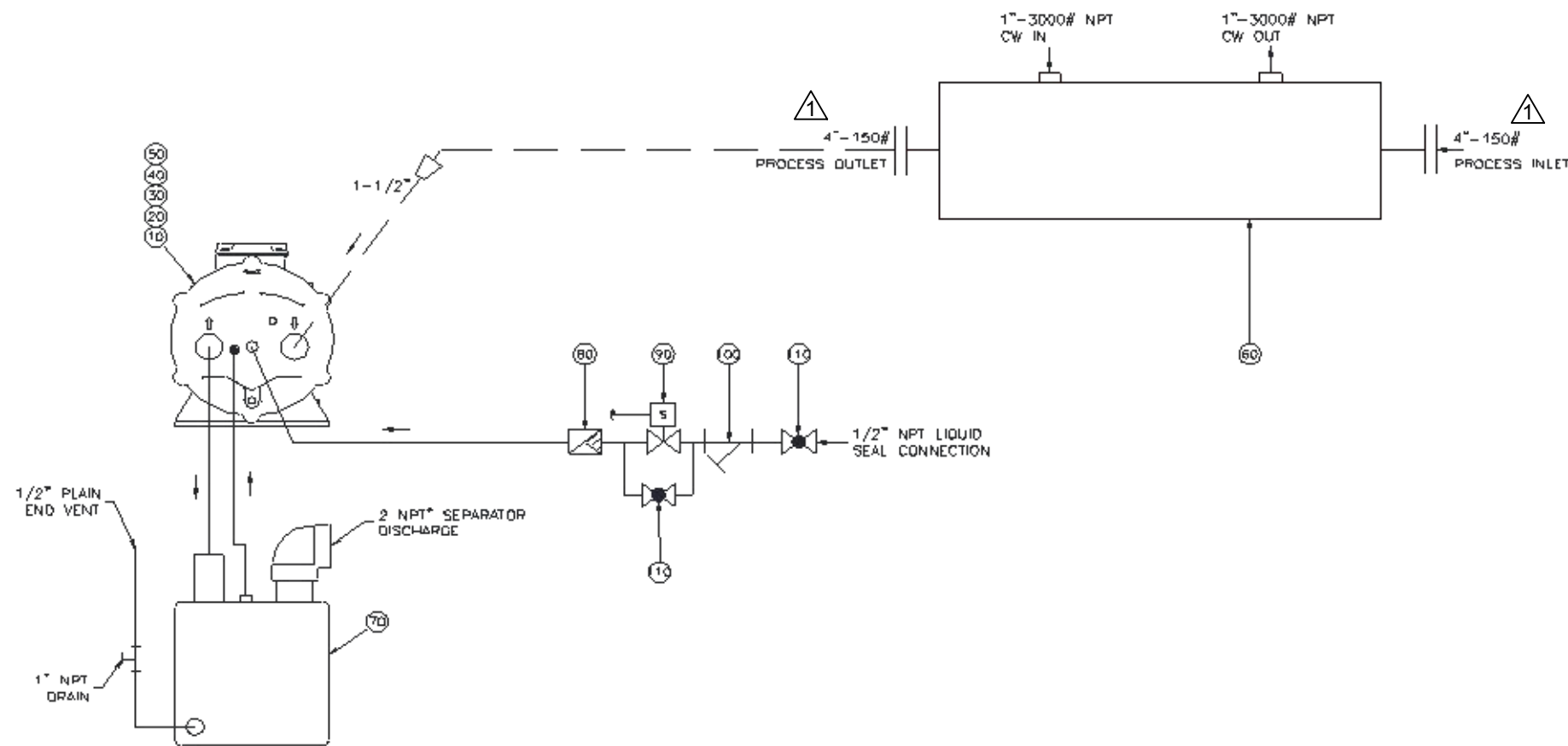
VIEW A-A
SEAL LINE REMOVED FOR CLARITY



END VIEW

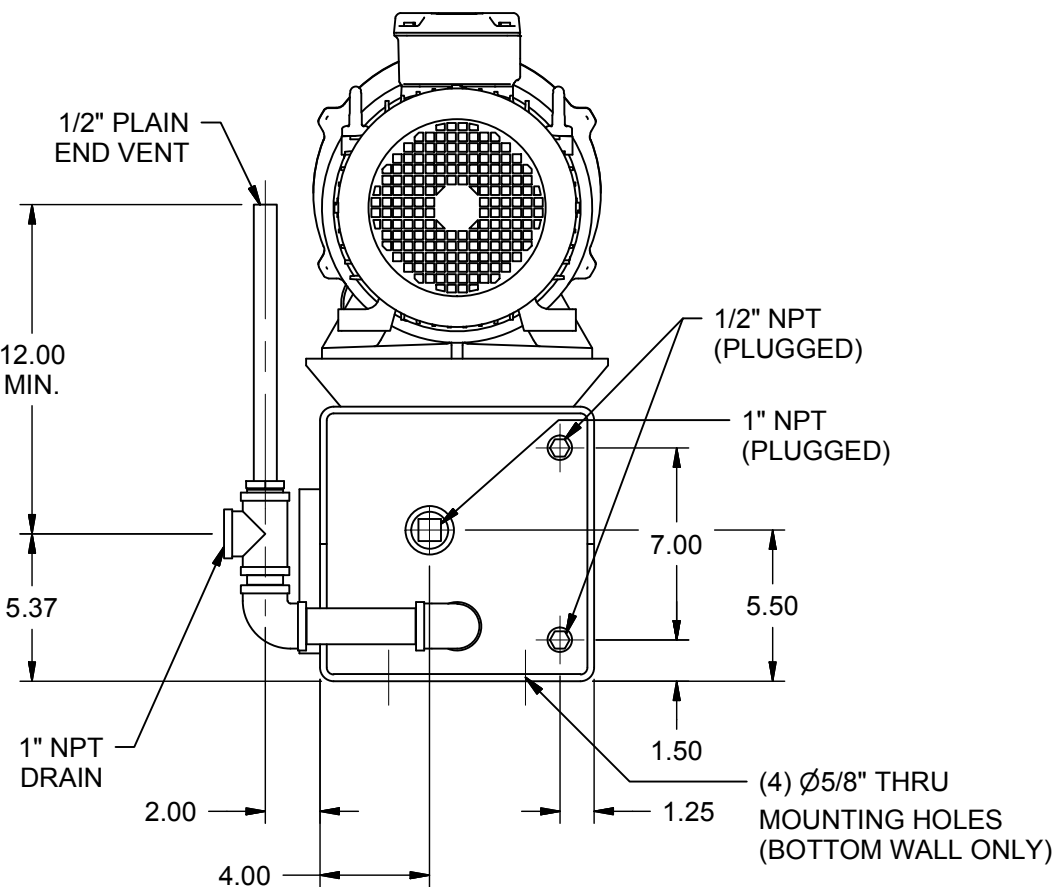


ELEVATION VIEW
INLET & DISCHARGE PIPING REMOVED
FOR CLARITY



FLOW DIAGRAM

- NOTES:
- ALL DIMENSIONS ARE IN INCHES.
 - FOR INSTALLATION AND OPERATION SEE MANUALS.
 - SOLIDLY GROUND UNIT. DO NOT USE PIPING SYSTEM FOR GROUND.
 - TOLERANCES PER HEI & TEMA.
 - ALL THREADED CONNECTIONS ARE ±1".
 - APPROXIMATE WEIGHT: 346 lbs.
 - PIPING AS FOLLOWS:
PIPING -
A: MATERIAL: 316 STAINLESS STEEL,
B: PIPE: SCHEDULE 40.
C: FITTINGS: NPT, 150#.
D: FLANGES: SLIP-ON, RAISED FACE, 150#.
E: BOLTING: STUDS - SA-193-B7,
NUTS - SA-194-2H (TEFLON COATED).
INCLUDE WASHERS ON PAINTED SURFACES.
 - PAINT: ALL CARBON STEEL COMPONENTS PER WI-12-032
NASH SIGNAL BLUE ENAMEL. MAJOR EQUIPMENT PAINTED
PER MANUFACTURER STANDARD. (DO NOT PAINT STAINLESS STEEL).
 - FOUNDATION BOLTS ARE DESIGNED AND FURNISHED BY OTHERS.
 - PUMP SHOULD NEVER BE RUN DRY. PRIME PUMP BEFORE
OPERATION.
 - REFERENCE PACKAGE BILL OF MATERIAL FOR
SALES ORDER/ITEM: 3078438/10 FOR COMPLETE DESCRIPTIONS
OF ITEMS SUPPLIED WITH THE ORDER. ITEM BALLS REFER TO THE
ITEM POSITION NUMBER ON THIS BILL OF MATERIAL.
 - PIPING FROM PRECONDENSER TO PUMP BY OTHERS.
 - G1/4 THRU G3/4 THREAD FORM MATES WITH NPT PIPE THREAD.



BACK VIEW
PUMP PIPING REMOVED FOR CLARITY

BILL OF MATERIAL		
ITEM	QTY	DESCRIPTION
10	1	VACUUM PUMP - SX10
20	1	MOTOR - 182TC FRAME
30,40,50	1	COUPLING HUBS AND INSERT
60	1	PRECONDENSER: 04036
70	1	BASE/SEPARATOR
80	1	FLOW CONTROL VALVE: 1/2" NPT
90	1	SOLENOID VALVE: 1/2" NPT
100	1	STRAINER: 1/2" NPT
110	2	BALL VALVE: 1/2" NPT

<input type="checkbox"/> For Approval: Tentative shipping promise is established upon return of approved print.			
<input type="checkbox"/> For Final Approval: This print covers equipment on which mfg. has started. Delivery is established upon return of final approved print.			
<input checked="" type="checkbox"/> Certified For Construction: This print covers equipment on which mfg. has started. Any change is subject to price and shipping promise adjustment. <i>WJ</i>			

REV.	DESCRIPTION	DATE	APPVD
1	REVISED PER ECN. 16-179	09/06/2016	ZJ
0	ORIGINAL	08/15/2016	ZJ

REVISIONS

DO NOT USE THIS PRINT FOR CONSTRUCTION UNLESS CERTIFIED AND DATED.

THIS DRAWING IS THE PROPERTY OF THE GARDNER DENVER NASH LLC, BENTLEYVILLE, PA. 15314, USA, AND CONTAINS GARDNER DENVER NASH PROPRIETARY INFORMATION. WRITTEN PERMISSION TO USE OR DISCLOSE ANY INFORMATION HEREIN MUST BE OBTAINED FROM GARDNER DENVER NASH LLC.

NASH Gardner Denver Nash LLC			
TITLE: SX 10 SS ONCE THROUGH PACKAGE W/ PRECONDENSER			
PURCHASER: CHS Biodesiel		P.O.#: 4500005282	
USER: CHS		NETWORK#: 3862661	
SCALE: NTS		SALES#: 3078438	
DRAWN BY: ARC		SHEET 1 OF 1	
DWG. NO.: D-806689		APPVD BY: ZJ	
		DATE: 8/2016	
		REV. 1	
		SHEET SIZE: D	