


- SEAL LIQUID OVERFLOW PORT,
1" NPT, CS
- "Y" STRAINER,
1/2" NPT, CS
- SEAL LIQUID REGULATING
GLABE VALVE,
1/2" NPT, BRONZE
- MAKE-UP INLET,
ORIFICE, 1/2" NPT, BRASS
- MAKE-UP BY-PASS
VALVE, 1/2" NPT, BRASS
- MAKE-UP WATER SOLENOID
1/2" NPT, 120 VAC, 60 HZ,
CS

- PROCESS OUTLET
1 1/2" NPT
- GAS / LIQUID
SEPARATOR
- PRE-COOLER,
BCF 02008-1 BRASS
- INLET CHECK VALVE,
1" NPT, CS

- COMPOUND PRESSURE GAUGE
30"Hg - 0 - 15PSI
- SEAL LIQUID TEMPERATURE
GAUGE, 50° - 300 °F
- SYSTEM NAMEPLATE
W/ SERIAL NUMBER

DOLPHIN LIQUID RING VACUUM PUMP
LA0053 W/ INBOARD BEARINGS
3HP MOTOR, 184T,
230/460/3/60, 1750 RPM,
CALSS 1, DIV. 2, GROUP D

- NOTES:
- 1. SEE SHEET 2 FOR ORTHO VIEWS
 - 2. TOTAL APPROX. WEIGHT: 369 LBS.
 - 3. ASSEMBLY DRAWING NUMBER: D-13419

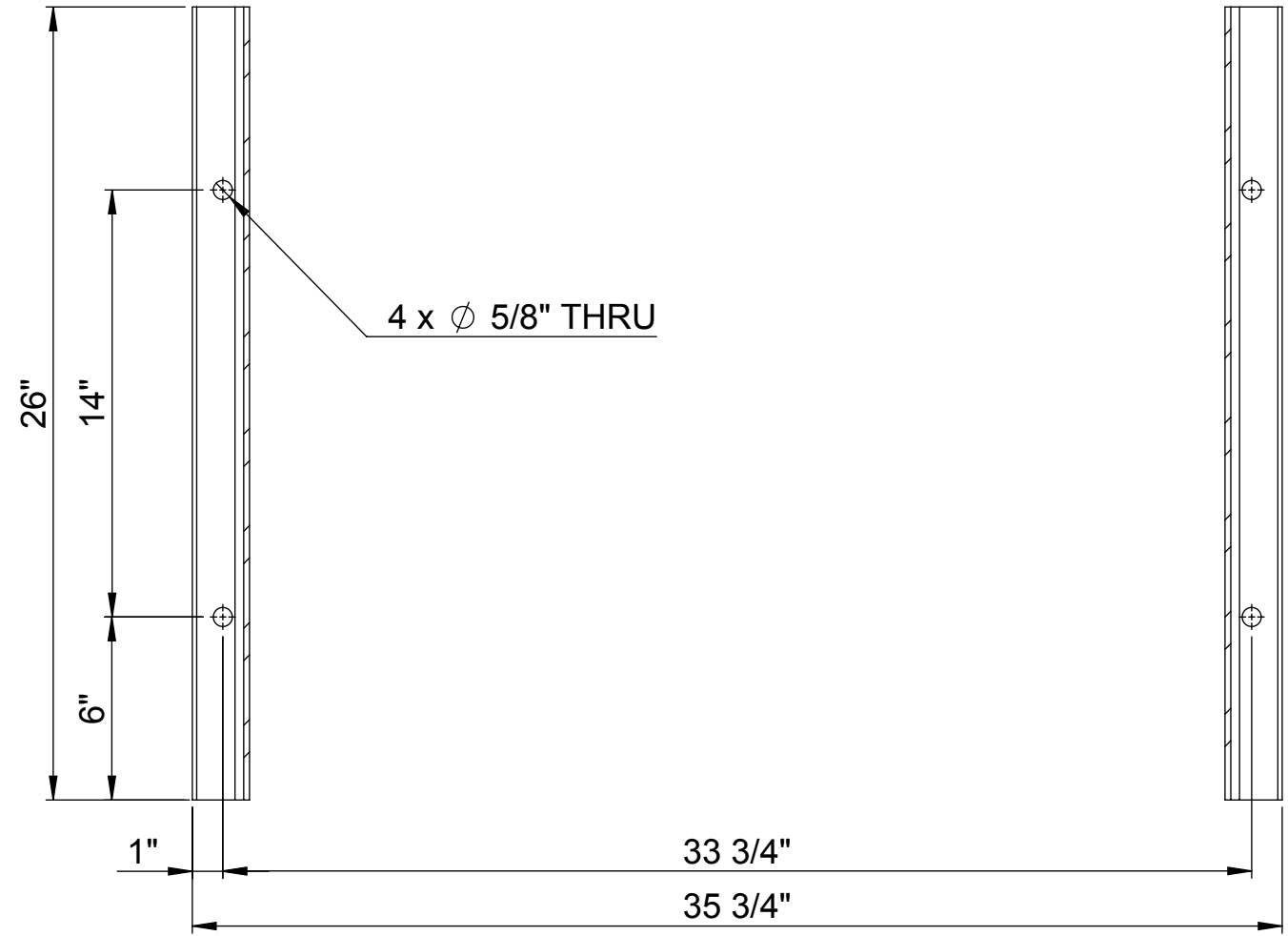
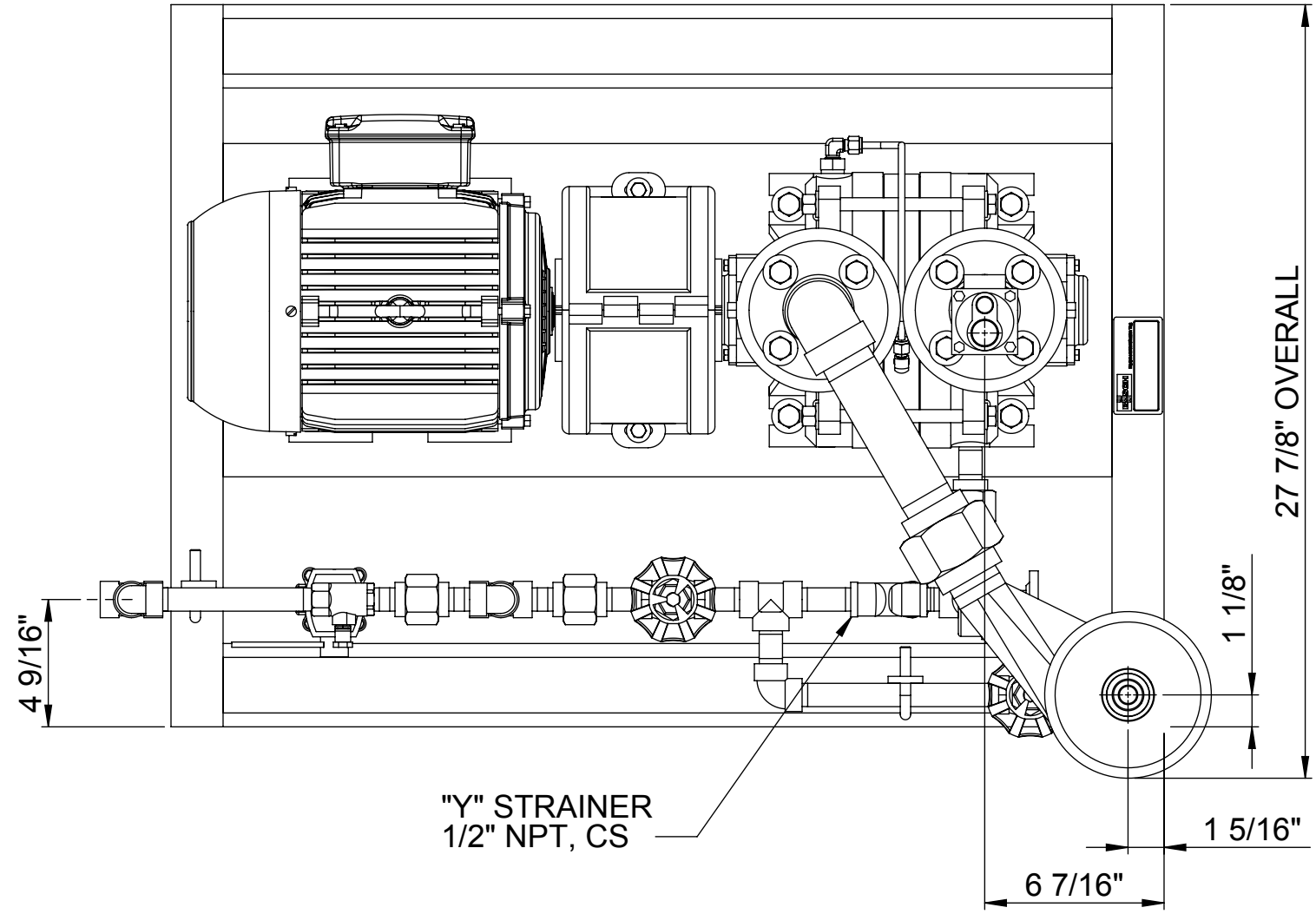
			A		ORIGINAL RELEASE		8/6/2014	JLH	
			REV.		DESCRIPTION		DATE	BY	
SHIPPING: SOME DISASSEMBLY OF SYSTEM MAY BE REQUIRED FOR SHIPMENT. ASSEMBLY ON SITE IS THE RESPONSIBILITY OF THE CUSTOMER.					BUSCH LLC 516 VIKING DRIVE VIRGINIA BEACH, VA 23452 PHONE (757) 463-7800 FAX (757) 463-7407 WWW.BUSCHUSA.COM		APPROVED BY:		
							ALL UNSIGNED DRAWINGS ARE CONSIDERED "UNCONTROLLED" DRAWN BY: JLH		
			TOLERANCES: ONLY DIMENSIONS MARKED "CD" ARE CONTROLLED DIMENSIONS AND ARE HELD TO THE FOLLOWING TOLERANCES UNLESS SPECIFIED OTHERWISE. ALL OTHER DIMENSIONS ARE APPROX.			Vacuum Pumps and Systems		UNAUTHORIZED USE, MANUFACTURE OR REPRODUCTION IN WHOLE OR IN PART IS PROHIBITED. DRAWING DESIGNS AND OTHER DISCLOSURES ARE PROPERTY OF BUSCH LLC	
ISO 9001 REGISTERED COMPANY		SCALE:				1:6			
		DOLPHIN LA0053 PARTIAL RECOVERY LIQUID RING VACUUM PUMP SYSTEM - DIMENSIONAL							
			ITEM NUMBER: 663000040SYSTEM-3					SHEET:	1 OF 2
			CUSTOMER: PATRIOT FUELS BIODIESEL, LLC					DRAWING NUMBER:	REV.
			PROJECT NO. 663000040					D13418 A	
			SALES ORDER NO. SLS111422						
<24" ±1/4"			24"-48" ±3/8"			>48" ±1/2"			

SHIPPING:
SOME DISASSEMBLY OF SYSTEM MAY
BE REQUIRED FOR SHIPMENT.
ASSEMBLY ON SITE IS THE
RESPONSIBILITY OF THE CUSTOMER.

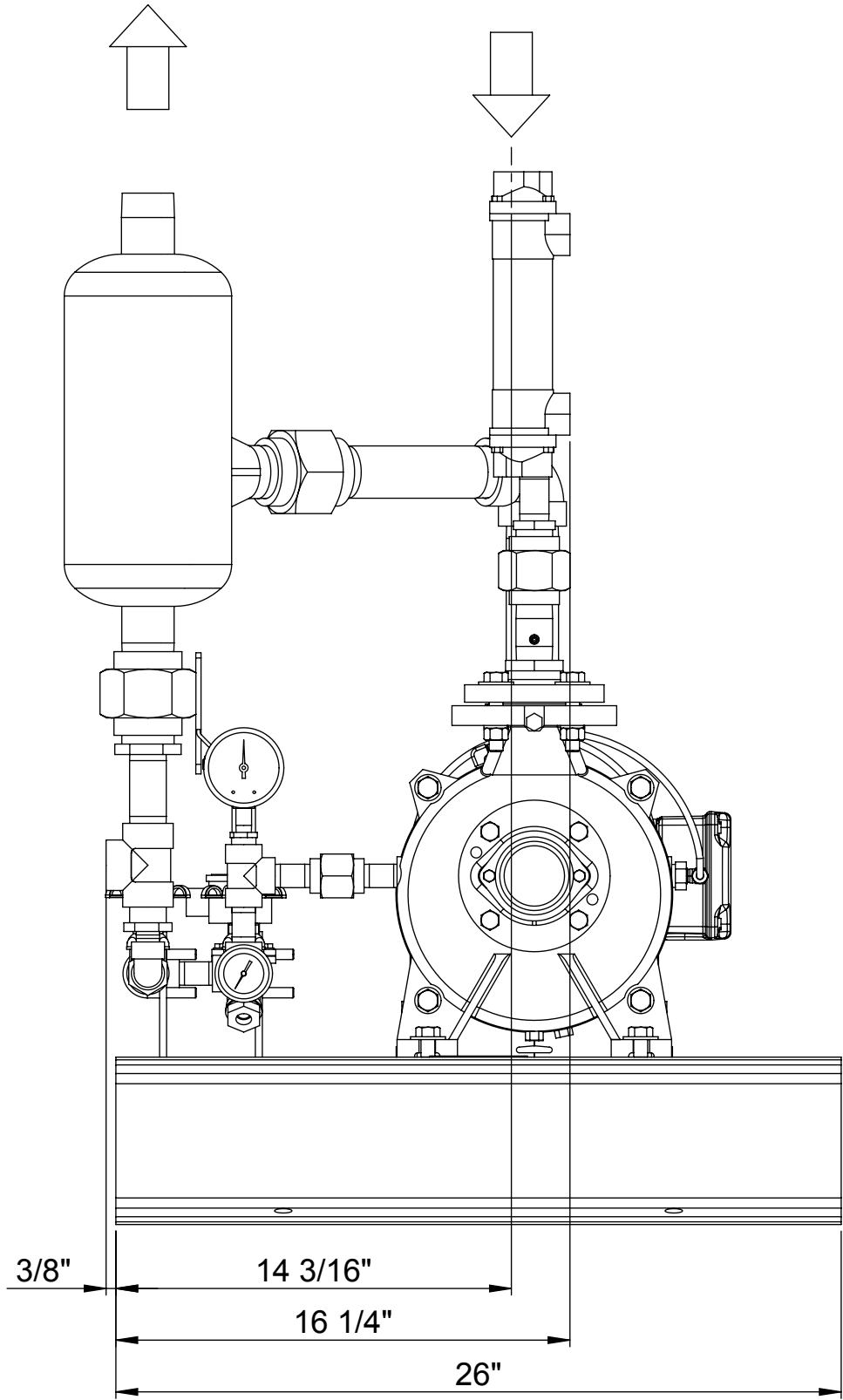
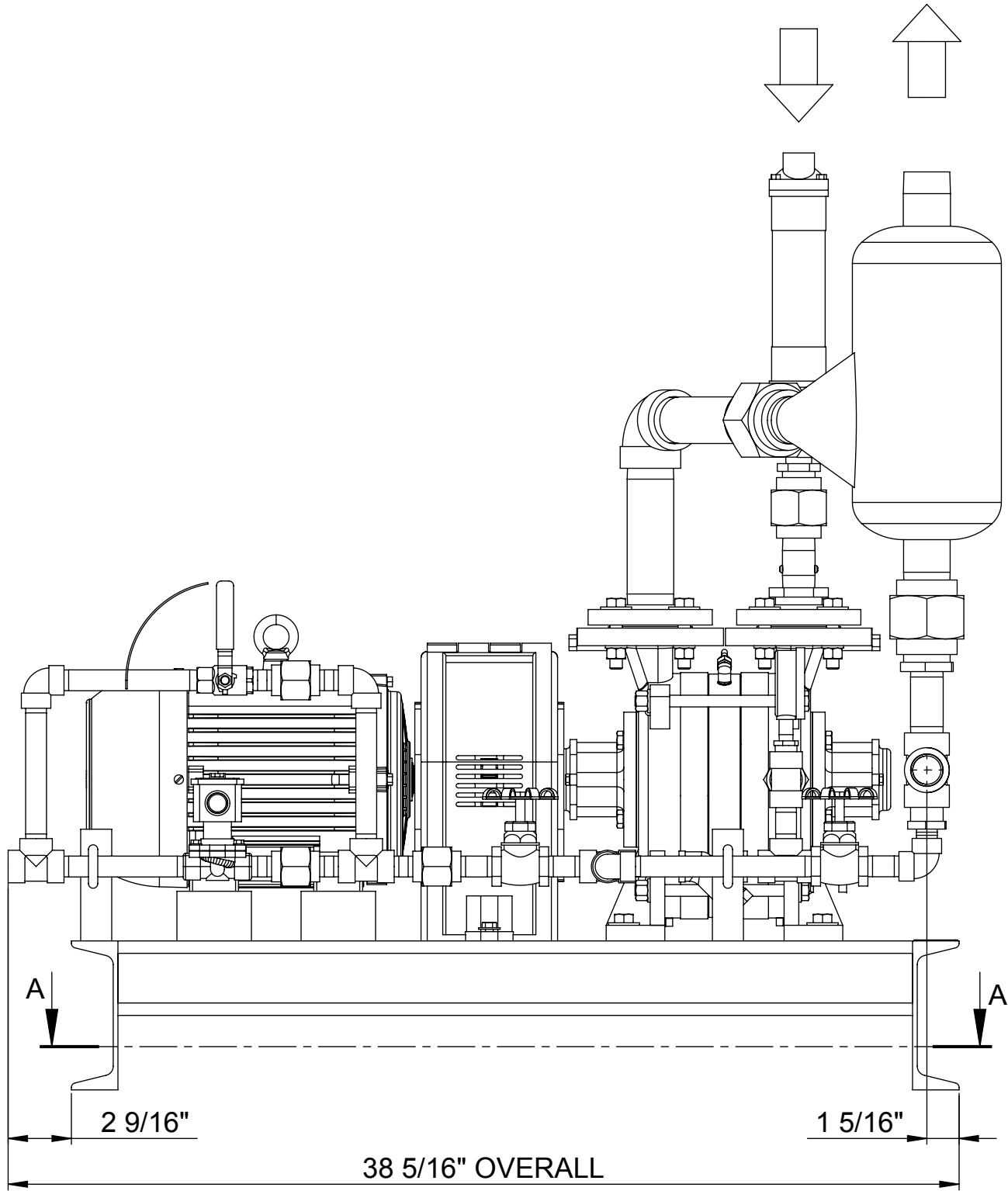
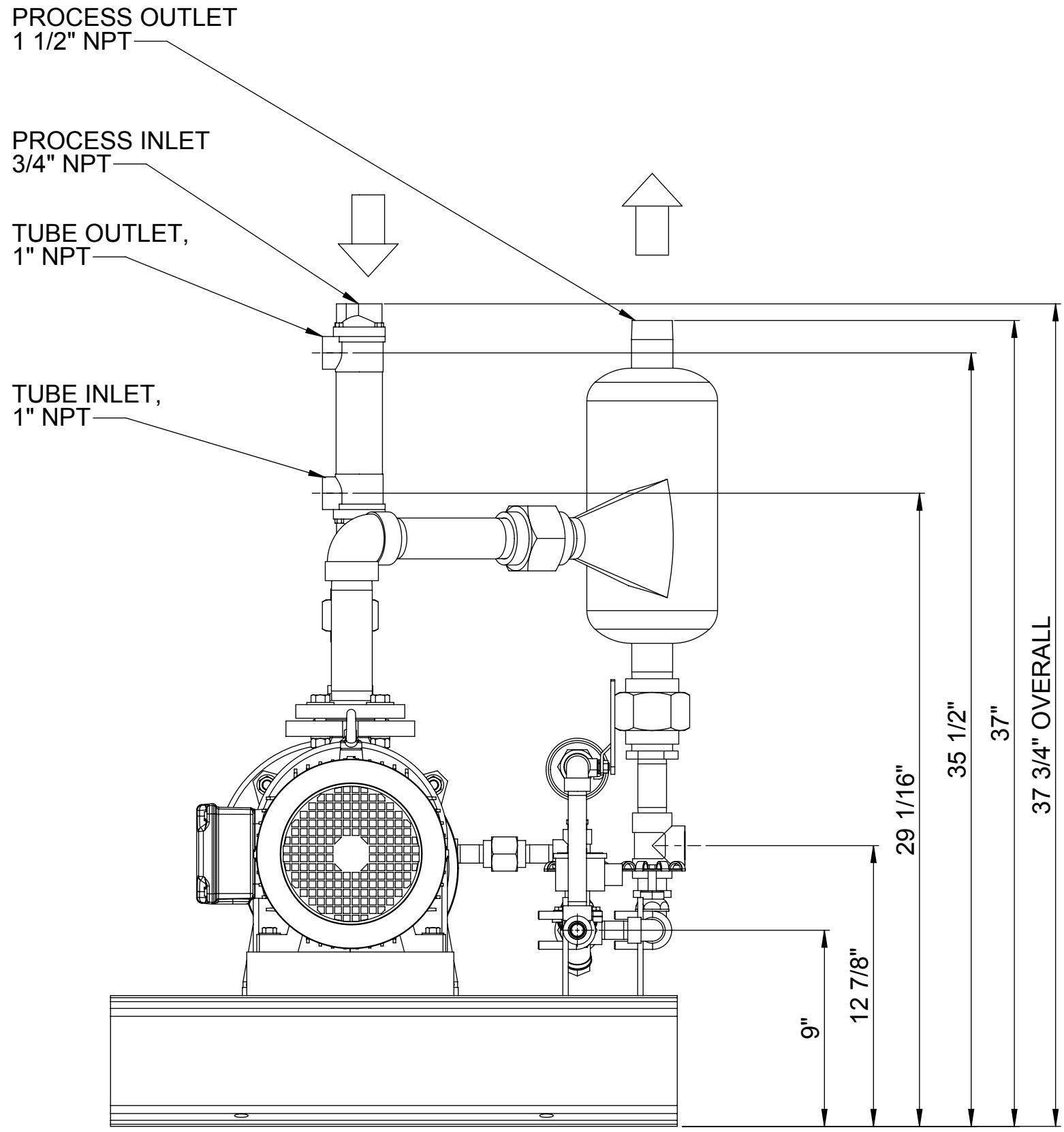
TOLERANCES:
ONLY DIMENSIONS MARKED "CD" ARE
CONTROLLED DIMENSIONS AND ARE
HELD TO THE FOLLOWING TOLERANCES
UNLESS SPECIFIED OTHERWISE.


ALL OTHER DIMENSIONS ARE APPROX.

<24" ±1/4"	24"-48" ±3/8"	>48" ±1/2"
------------	---------------	------------



SECTION A-A



SHIPPING: SOME DISASSEMBLY OF SYSTEM MAY BE REQUIRED FOR SHIPMENT. ASSEMBLY ON SITE IS THE RESPONSIBILITY OF THE CUSTOMER.				BUSCH LLC 516 VIKING DRIVE VIRGINIA BEACH, VA 23452 PHONE (757) 463-7800 FAX (757) 463-7407 WWW.BUSCHUSA.COM		APPROVED BY: ALL UNSIGNED DRAWINGS ARE CONSIDERED "UNCONTROLLED" DRAWN BY: JLH		
TOLERANCES: ONLY DIMENSIONS MARKED "CD" ARE CONTROLLED DIMENSIONS AND ARE HELD TO THE FOLLOWING TOLERANCES UNLESS SPECIFIED OTHERWISE. ALL OTHER DIMENSIONS ARE APPROX.				Vacuum Pumps and Systems ISO 9001 REGISTERED COMPANY		UNAUTHORIZED USE, MANUFACTURE OR REPRODUCTION IN WHOLE OR IN PART IS PROHIBITED. DRAWING DESIGNS AND OTHER DISCLOSURES ARE PROPERTY OF BUSCH LLC		
						DATE: 8/7/2014 SCALE: 1:8		
			DOLPHIN LA0053 PARTIAL RECOVERY LIQUID RING VACUUM PUMP SYSTEM - DIMENSIONAL					
			ITEM NUMBER: 663000040SYSTEM-3				SHEET: 2 OF 2	
			CUSTOMER: PATRIOT FUELS BIODIESEL, LLC PROJECT NO. 663000040 SALES ORDER NO. SLS111422				DRAWING NUMBER: D13418 REV. A	
			<24" ±1/4" 24"-48" ±3/8" >48" ±1/2"					