

### MOTOR LIST

TAG	LOCATION	VOLTAGE	HP	RPM
M1	(X-5207) PUXS-12	460	75	1800
M2	(X-5208) FANCT-11	460	125	1800
M3	(X-5208) SCRF-11	460	40	1200
M4	(X-5210) DSC-11	460	150	900
M5	(X-5204) SCRU-11	460	30	1800
M6	(X-5206) SCRU-12	460	25	1800
M7	(X-5212) SCRO-11A	460	10	1800
M8	(X-5213) SCRO-11B	460	10	1800
M9	(RV-5202) RVAL-12A	460	2.0	1800
M10	(RV-5203) RVAL-12B	460	2.0	1800
MFN 5202	DAML-12	110 (3.1A)	N/A	
M13	(FN-5202) FANC-12	4160	1300	1200
M15	(RV-5201) RVAL-11	460	3.0	1800
M16	(RV-5204) RVAL-13	460	3.0	1800
M18	(X-5216) DRAG-11	460	15	1800
PV 52111	DAML-13	110 (0.65A)	N/A	

### LEGEND

*	EQUIPMENT SUPPLIED BY CUSTOMER
#	INSTRUMENT SUPPLIED BY BRI
TBA	TO BE ADVISED
A.D.	ACCESS DOOR
◇	LIMIT OF BRI SUPPLY
▽	CAPPED DRAIN
X	FLOW/UTILITIES TAG
GB	GEARBOX
⊗	SPARE CONNECTION
⊙	MOTOR
⊕	OBSERVATION SIGHT GLASS
⊖	ANALYSIS PORT
⊗	SAMPLE PORT
⊘	CLEAN IN PLACE NOZZLE
⊙	LAMP
R.D.	RUPTURE DISK

### UTILITIES

TAG	DESCRIPTION	FLOW (GPM)	PRESS
QW	QUENCH WATER	60 GPM	60 PSIG
AS	AIR SUPPLY	0 CFM	80-100 PSIG
IA	INSTRUMENT AIR	REFER TO AIR HEATER PAD	REFER TO AIR HEATER PAD

### DESIGN PROCESS FLOW DATA

TAG	LOCATION	RATE	UNITS
3	WET FEED RATE	112,861 lbs/h	63% MC
5	GROSS FEED DRYER	552,861 lbs/h	24% MC
6	CYCLONE DISCHARGE	20,894 lbs/h	5% MC
7	RECYCLE TO PADDLE MIXER	440,000 lbs/h	14% MC
9	PRODUCT TO COOLER	46,432 acfm	10% MC
11	COMBUSTION AIR	18,000 acfm	64°F
12	DRYER INLET AIR	248,000 acfm	79°F
13	DRYER EXHAUST	175,000 acfm	240°F
14	DRYER BLEED-OFF	63,000 acfm	240°F

- ### NOTES
- 1- ALL INSTRUMENTS AND CONTROLS SUPPLIED BY THE CUSTOMER, EXCEPT AS NOTED
  - 2- WORK THIS DWG IN CONJUNCTION WITH DWG: 2409-1144-01-02, 2409-1144-01-03, 2409-1144-01-04, 2409-HTRG-11-01, 2409-HTRG-11-02, 2409-HTRG-11-02
  - 3- PLEASE REFER TO THE FOLLOWING DOCUMENTS FOR FURTHER DETAILS: 2409-INSTRUMENT LIST-RING DRYER, 2409-INSTRUMENT LIST-FLUID BED COOLER, AIR HEATER WIRING DIAGRAM
  - 4- UPS POWER TO BE SUPPLIED (BY OTHERS) FOR ELECTRIC ACTUATORS TO ALLOW FAIL CLOSE CONDITION IN THE EVENT OF POWER FAILURE
  - 5- SEE INTERLOCK MATRIX FOR RING DRYER FOR DETAIL COMMUNICATION REQUIREMENTS BETWEEN BUS PANEL AND DCS
  - 6- CONTACT WIRED TO BUS PANEL
  - 7- DAMPER TO RTD REQUIRES 2 LIMIT SWITCHES. 1 FOR DCS AND 1 FOR BMS.

## FEED TYPE DRYER FOR DDGS (PARTIAL GAS RECYCLE) RECOMMENDED PROCESS & INSTRUMENTATION DIAGRAM

BUNGE ERGON VICKSBURG, MISSISSIPPI, USA

**GEA Barr-Rosin Inc**  
Process Engineering Division  
A company of mg technologies group

THIS DRAWING, SPECIFICATION AND DATA IS CONFIDENTIAL AND MUST NOT BE USED, PUBLISHED, REPRODUCED IN WHOLE OR IN PART WITHOUT PRIOR WRITTEN PERMISSION FROM BARR-ROSLN INC. © COPYRIGHT

SCALE	N/A	N/A
DRAWN	TN	2007.JAN.24
CHECKED	ZD	2007.JAN.26
APPROVED	YMG	2007.JAN.26
DWG NO	2409-1144-01-01	
REV	D	

THE DATA CONTAINED ON THIS DRAWING IS UNCLASSIFIED AND MUST NOT BE REPRODUCED OR REPRODUCED IN WHOLE OR IN PART WITHOUT PRIOR WRITTEN PERMISSION FROM BARR & ROSIN INC.

REV. BY	DATE	CHECKED	APPROVED	REV. BY	DATE	CHECKED	APPROVED	REV. BY	DATE	CHECKED	APPROVED	REV. BY	DATE	CHECKED	APPROVED	REV. BY	DATE	CHECKED	APPROVED				
H				G				F				D	2007.SEP.20	CL	EB	C	2007.AUG.23	EC	YMG	B	2007.MAY.17	EC	YMG

ISSUE HISTORY

ISSUE NO.	ISSUE DATE	ISSUE DESCRIPTION	REV. BY	REV. DATE
1		FOR INFORMATION		
2		FOR APPROVAL		
3		CERTIFIED FOR FABRICATION		
4		FOR FABRICATION		

REVISIONS:

- GENERAL CHANGES TO MEET STANDARDS
- CHANGES TO MATCH STD DWG.
- UPDATED UTILITIES CHART.
- MODIFIED TAGS.
- TAG NUMBER ON MAIN FAN DRAW MODIFIED.
- GENERAL CHANGE TO MEET STANDARD D13A



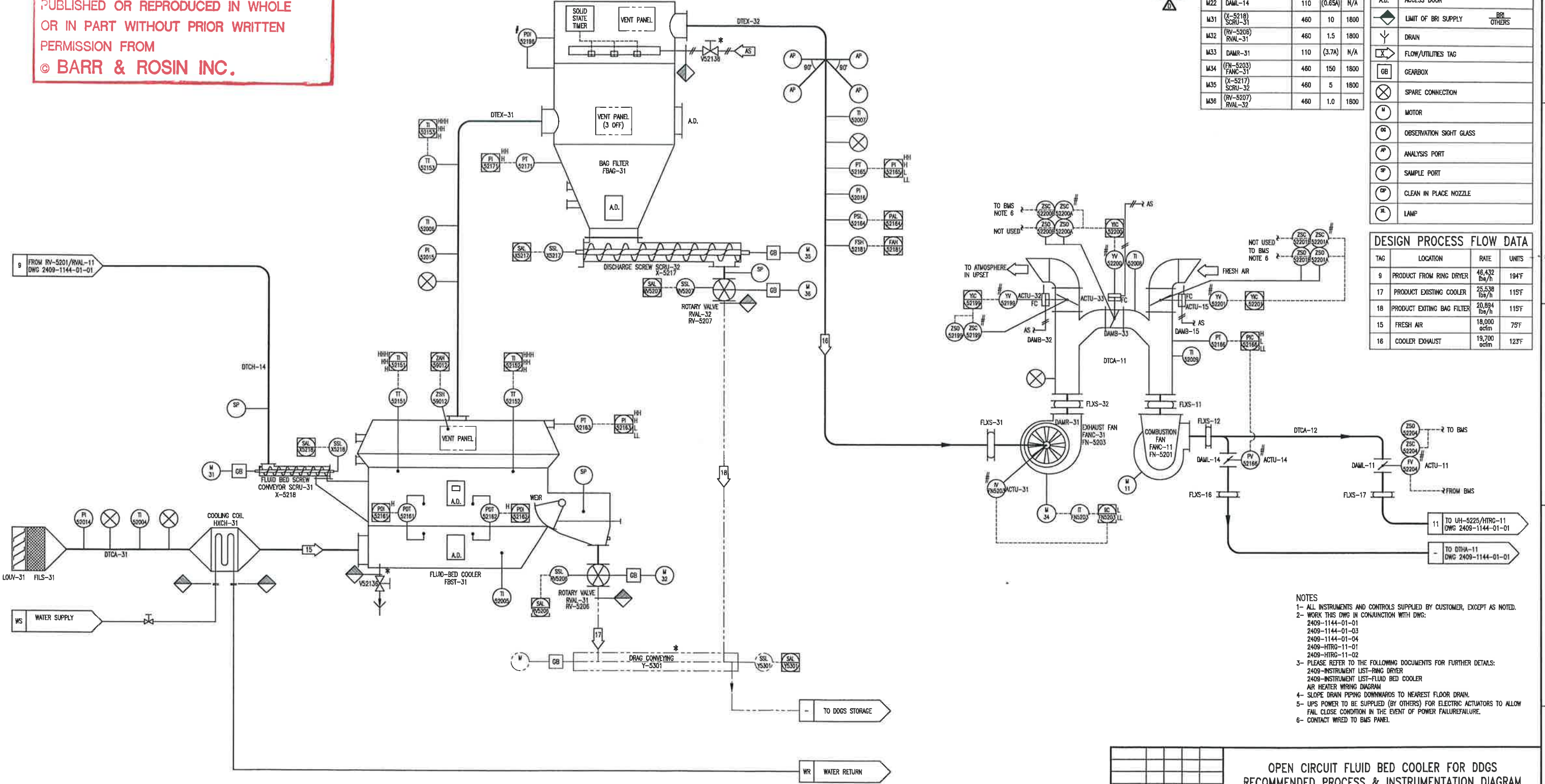
THE DATA CONTAINED ON THIS DOCUMENT IS CONFIDENTIAL AND MUST NOT BE USED, PUBLISHED OR REPRODUCED IN WHOLE OR IN PART WITHOUT PRIOR WRITTEN PERMISSION FROM  
**© BARR & ROSIN INC.**

UTILITIES				
TAG	DESCRIPTION	NOMINAL (MAX)	LINE SIZE/TYPER	TEMP./PRESS.
AS	AIR SUPPLY	42 CFM (80 CFM)	TBC BY OTHERS	90-100 PSIG
WS	COOLING WATER	150 USGPM	#4"/150#	70°F/1.3 PSIG

MOTOR LIST			
TAG	LOCATION	VOLTAGE	HP
M11	(FN-5201) FANC-11	460	150
M17	DAML-11	110	(0.65A)
M22	DAML-14	110	(0.65A)
M31	(X-5218) SCRU-31	460	10
M32	(RY-5206) RVAL-31	460	1.5
M33	DAMR-31	110	(3.7A)
M34	(FN-5203) SCRU-32	460	150
M35	(X-5217) SCRU-32	460	5
M36	(RY-5207) RVAL-32	460	1.0

LEGEND	
*	EQUIPMENT SUPPLIED BY CUSTOMER
#	INSTRUMENT SUPPLIED BY BRI
TBA	TO BE ADVISED
A.D.	ACCESS DOOR
◇	LIMIT OF BRI SUPPLY
▽	DRAIN
⊗	FLOW/UTILITIES TAG
GB	GEARBOX
⊗	SPARE CONNECTION
⊙	MOTOR
⊙	OBSERVATION SIGHT GLASS
⊙	ANALYSIS PORT
⊙	SAMPLE PORT
⊙	CLEAN IN PLACE NOZZLE
⊙	LAMP

DESIGN PROCESS FLOW DATA			
TAG	LOCATION	RATE	UNITS
9	PRODUCT FROM RING DRYER	46,432 lb/h	194°F
17	PRODUCT EXISTING COOLER	25,538 lb/h	115°F
18	PRODUCT EXISTING BAG FILTER	20,894 lb/h	115°F
15	FRESH AIR	18,000 acfm	75°F
16	COOLER EXHAUST	19,700 acfm	123°F



- NOTES
- 1- ALL INSTRUMENTS AND CONTROLS SUPPLIED BY CUSTOMER, EXCEPT AS NOTED.
  - 2- WORK THIS DWG IN CONJUNCTION WITH DWG: 2409-1144-01-01, 2409-1144-01-03, 2409-1144-01-04, 2409-HTRG-11-01, 2409-HTRG-11-02
  - 3- PLEASE REFER TO THE FOLLOWING DOCUMENTS FOR FURTHER DETAILS: 2409-INSTRUMENT LIST-RING DRYER, 2409-INSTRUMENT LIST-FLUID BED COOLER, AIR HEATER WIRING DIAGRAM
  - 4- SLOPE DRAIN PIPING DOWNWARDS TO NEAREST FLOOR DRAIN.
  - 5- UPS POWER TO BE SUPPLIED (BY OTHERS) FOR ELECTRIC ACTUATORS TO ALLOW FAIL CLOSE CONDITION IN THE EVENT OF POWER FAILURE/FAILURE.
  - 6- CONTACT WIRED TO BMS PANEL.

OPEN CIRCUIT FLUID BED COOLER FOR DDGS  
 RECOMMENDED PROCESS & INSTRUMENTATION DIAGRAM

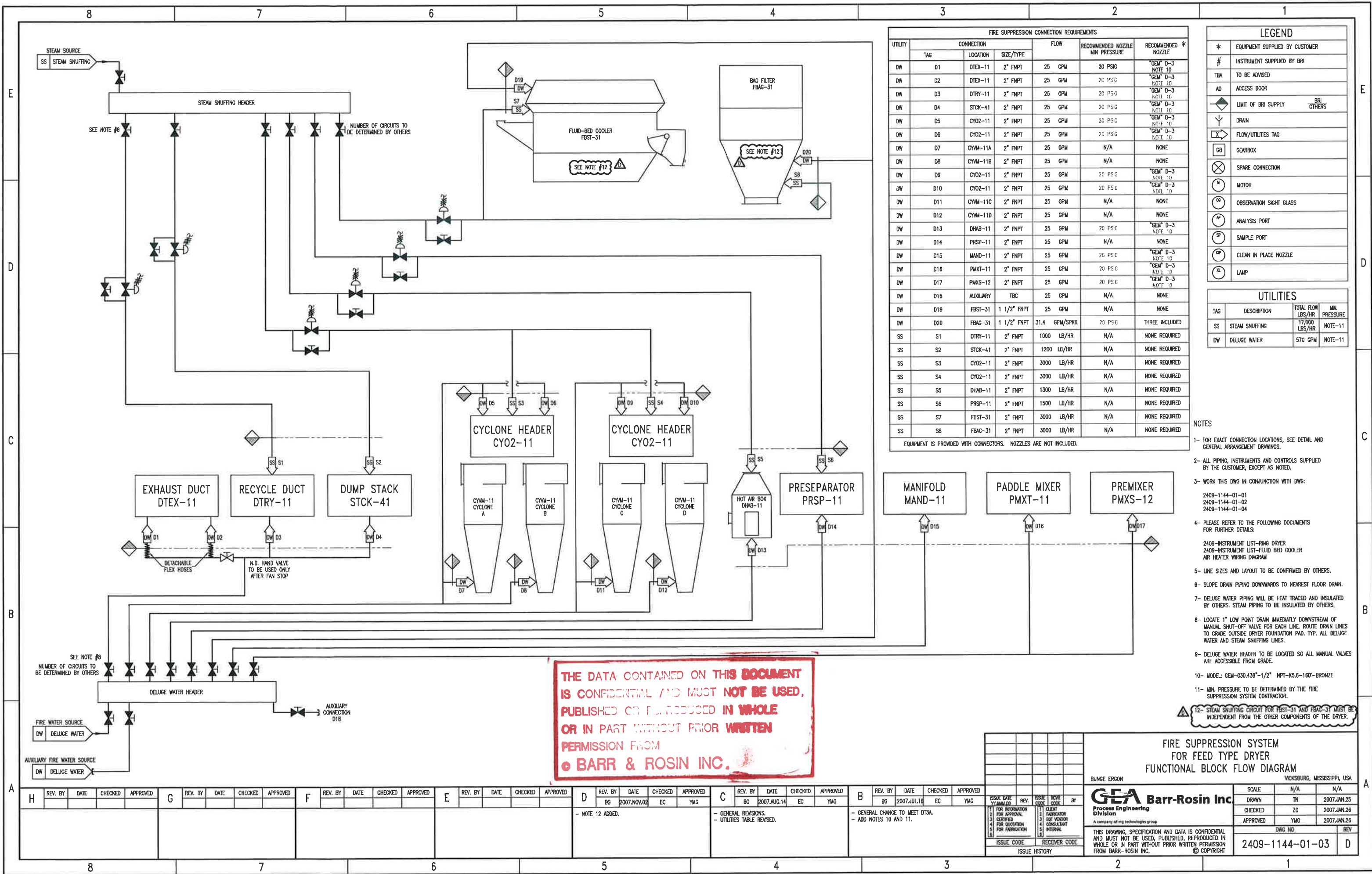
BUNGE ERGON VICKSBURG, MISSISSIPPI, USA

**GEA Barr-Rosin Inc.**  
 Process Engineering Division  
 A company of emg technologies group

THIS DRAWING, SPECIFICATION AND DATA IS CONFIDENTIAL AND MUST NOT BE USED, PUBLISHED, REPRODUCED IN WHOLE OR IN PART WITHOUT PRIOR WRITTEN PERMISSION FROM BARR-ROSOIN INC. © COPYRIGHT

SCALE	N/A	N/A
DRAWN	TN	2007.JAN.24
CHECKED	ZD	2007.JAN.26
APPROVED	YMG	2007.JAN.26
DWG NO	2409-1144-01-02	REV
		D

REV. BY	DATE	CHECKED	APPROVED	REV. BY	DATE	CHECKED	APPROVED	REV. BY	DATE	CHECKED	APPROVED	REV. BY	DATE	CHECKED	APPROVED	REV. BY	DATE	CHECKED	APPROVED								
H				G				F				E				D	2007.SEP.13	EC	YMG	C	2007.AUG.23	EC	YMG	B	2007.MAY.17	EC	YMG
																- UPDATED UTILITIES DATA CHART.				- GENERAL CHANGES TO MEET STANDARD. - CHANGED TO MATCH STD DWG. - ADDED AIR SUPPLY LINES. - UPDATED UTILITIES CHART. - MODIFIED TAGS.				- GENERAL CHANGE TO MEET STANDARD DT3A			



FIRE SUPPRESSION CONNECTION REQUIREMENTS							
UTILITY	CONNECTION		FLOW	RECOMMENDED NOZZLE MIN PRESSURE	RECOMMENDED NOZZLE *		
	TAG	LOCATION				SIZE/TYPER	
DW	D1	DTEX-11	2" FNPT	25 GPM	20 PSIG	"GEM" D-3	NOTE 10
DW	D2	DTEX-11	2" FNPT	25 GPM	20 PSIG	"GEM" D-3	NOTE 10
DW	D3	DTRY-11	2" FNPT	25 GPM	20 PSIG	"GEM" D-3	NOTE 10
DW	D4	STCK-41	2" FNPT	25 GPM	20 PSIG	"GEM" D-3	NOTE 10
DW	D5	CY02-11	2" FNPT	25 GPM	20 PSIG	"GEM" D-3	NOTE 10
DW	D6	CY02-11	2" FNPT	25 GPM	20 PSIG	"GEM" D-3	NOTE 10
DW	D7	CYM-11A	2" FNPT	25 GPM	N/A	NONE	
DW	D8	CYM-11B	2" FNPT	25 GPM	N/A	NONE	
DW	D9	CY02-11	2" FNPT	25 GPM	20 PSIG	"GEM" D-3	NOTE 10
DW	D10	CY02-11	2" FNPT	25 GPM	20 PSIG	"GEM" D-3	NOTE 10
DW	D11	CYM-11C	2" FNPT	25 GPM	N/A	NONE	
DW	D12	CYM-11D	2" FNPT	25 GPM	N/A	NONE	
DW	D13	DHAB-11	2" FNPT	25 GPM	20 PSIG	"GEM" D-3	NOTE 10
DW	D14	PRSP-11	2" FNPT	25 GPM	N/A	NONE	
DW	D15	MAND-11	2" FNPT	25 GPM	20 PSIG	"GEM" D-3	NOTE 10
DW	D16	PMXT-11	2" FNPT	25 GPM	20 PSIG	"GEM" D-3	NOTE 10
DW	D17	PMXS-12	2" FNPT	25 GPM	20 PSIG	"GEM" D-3	NOTE 10
DW	D18	AUXILIARY	TBC	25 GPM	N/A	NONE	
DW	D19	FBST-31	1 1/2" FNPT	25 GPM	N/A	NONE	
DW	D20	FBAG-31	1 1/2" FNPT	31.4 GPM/SPKR	20 PSIG	THREE INCLUDED	
SS	S1	DTRY-11	2" FNPT	1000 LB/HR	N/A	NONE REQUIRED	
SS	S2	STCK-41	2" FNPT	1200 LB/HR	N/A	NONE REQUIRED	
SS	S3	CY02-11	2" FNPT	3000 LB/HR	N/A	NONE REQUIRED	
SS	S4	CY02-11	2" FNPT	3000 LB/HR	N/A	NONE REQUIRED	
SS	S5	DHAB-11	2" FNPT	1300 LB/HR	N/A	NONE REQUIRED	
SS	S6	PRSP-11	2" FNPT	1500 LB/HR	N/A	NONE REQUIRED	
SS	S7	FBST-31	2" FNPT	3000 LB/HR	N/A	NONE REQUIRED	
SS	S8	FBAG-31	2" FNPT	3000 LB/HR	N/A	NONE REQUIRED	

EQUIPMENT IS PROVIDED WITH CONNECTORS. NOZZLES ARE NOT INCLUDED.

LEGEND	
*	EQUIPMENT SUPPLIED BY CUSTOMER
#	INSTRUMENT SUPPLIED BY BRI
TBA	TO BE ADVISED
AD	ACCESS DOOR
◆	LIMIT OF BRI SUPPLY
Y	DRAIN
X	FLOW/UTILITIES TAG
GB	GEARBOX
⊗	SPARE CONNECTION
⊙	MOTOR
⊖	OBSERVATION SIGHT GLASS
⊕	ANALYSIS PORT
⊗	SAMPLE PORT
⊘	CLEAN IN PLACE NOZZLE
⊙	LAMP

UTILITIES			
TAG	DESCRIPTION	TOTAL FLOW LBS/HR	MIN. PRESSURE
SS	STEAM SHUFFLING	17,000 LBS/HR	NOTE-11
DW	DELUGE WATER	570 GPM	NOTE-11

- NOTES
- FOR EXACT CONNECTION LOCATIONS, SEE DETAIL AND GENERAL ARRANGEMENT DRAWINGS.
  - ALL PIPING, INSTRUMENTS AND CONTROLS SUPPLIED BY THE CUSTOMER, EXCEPT AS NOTED.
  - WORK THIS DWG IN CONJUNCTION WITH DWG:
    - 2409-1144-01-01
    - 2409-1144-01-02
    - 2409-1144-01-04
  - PLEASE REFER TO THE FOLLOWING DOCUMENTS FOR FURTHER DETAILS:
    - 2409-INSTRUMENT LIST-RING DRYER
    - 2409-INSTRUMENT LIST-FLUID BED COOLER
    - AIR HEATER WIRING DIAGRAM
  - LINE SIZES AND LAYOUT TO BE CONFIRMED BY OTHERS.
  - SLOPE DRAIN PIPING DOWNWARDS TO NEAREST FLOOR DRAIN.
  - DELUGE WATER PIPING WILL BE HEAT TRACED AND INSULATED BY OTHERS. STEAM PIPING TO BE INSULATED BY OTHERS.
  - LOCATE 1" LOW POINT DRAIN IMMEDIATELY DOWNSTREAM OF MANUAL SHUT-OFF VALVE FOR EACH LINE. ROUTE DRAIN LINES TO GRADE OUTSIDE DRYER FOUNDATION PAD. TYP. ALL DELUGE WATER AND STEAM SHUFFLING LINES.
  - DELUGE WATER HEADER TO BE LOCATED SO ALL MANUAL VALVES ARE ACCESSIBLE FROM GRADE.
  - MODEL: GEM-030.436"-1/2" NPT-K5.6-160-BRONZE
  - MIN. PRESSURE TO BE DETERMINED BY THE FIRE SUPPRESSION SYSTEM CONTRACTOR.
- NOTE 12: STEAM SHUFFLING CIRCUIT FOR FBST-31 AND FBAG-31 MUST BE INDEPENDENT FROM THE OTHER COMPONENTS OF THE DRYER.

THE DATA CONTAINED ON THIS DOCUMENT IS CONFIDENTIAL AND MUST NOT BE USED, PUBLISHED OR REPRODUCED IN WHOLE OR IN PART WITHOUT PRIOR WRITTEN PERMISSION FROM  
**BARR & ROSIN INC.**

**FIRE SUPPRESSION SYSTEM FOR FEED TYPE DRYER**  
FUNCTIONAL BLOCK FLOW DIAGRAM

BUNGE ERGON VICKSBURG, MISSISSIPPI, USA

<p><b>GEA Barr-Rosin Inc</b> Process Engineering Division A company of mg technologies group</p> <p>THIS DRAWING, SPECIFICATION AND DATA IS CONFIDENTIAL AND MUST NOT BE USED, PUBLISHED, REPRODUCED IN WHOLE OR IN PART WITHOUT PRIOR WRITTEN PERMISSION FROM BARR-ROSLN INC. © COPYRIGHT</p>	<table border="1"> <tr><td>SCALE</td><td>N/A</td><td>N/A</td></tr> <tr><td>DRAWN</td><td>TN</td><td>2007.JAN.25</td></tr> <tr><td>CHECKED</td><td>ZD</td><td>2007.JAN.26</td></tr> <tr><td>APPROVED</td><td>YMG</td><td>2007.JAN.26</td></tr> </table> <p>DWG NO: 2409-1144-01-03 REV: D</p>	SCALE	N/A	N/A	DRAWN	TN	2007.JAN.25	CHECKED	ZD	2007.JAN.26	APPROVED	YMG	2007.JAN.26
SCALE	N/A	N/A											
DRAWN	TN	2007.JAN.25											
CHECKED	ZD	2007.JAN.26											
APPROVED	YMG	2007.JAN.26											

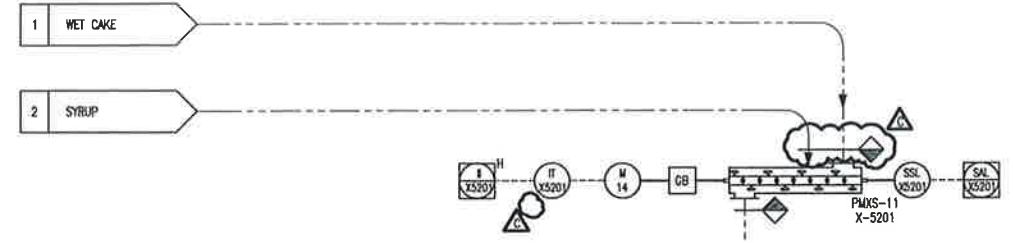
REV. BY	DATE	CHECKED	APPROVED	REV. BY	DATE	CHECKED	APPROVED	REV. BY	DATE	CHECKED	APPROVED	REV. BY	DATE	CHECKED	APPROVED	REV. BY	DATE	CHECKED	APPROVED				
H				G				F				E				D	BG	2007.NOV.02	EC	YMG			
												- NOTE 12 ADDED.				- GENERAL REVISIONS. - UTILITIES TABLE REVISED.				- GENERAL CHANGE TO MEET DTSK. - ADD NOTES 10 AND 11.			



MOTOR LIST				
TAG	LOCATION	VOLTAGE	HP	RPM
M14	(X-5201) PMXS-11	460	75	1800

LEGEND	
*	EQUIPMENT SUPPLIED BY CUSTOMER
#	INSTRUMENT SUPPLIED BY BRI
TBA	TO BE ADVISED
A.D.	ACCESS DOOR
◆	LIMIT OF BRI SUPPLY
⌵	CAPPED DRAIN
⊗	FLOW/UTILITIES TAG
GB	GEARBOX
⊗	SPARE CONNECTION
⊙	MOTOR
⊙	OBSERVATION SIGHT GLASS
⊙	ANALYSIS PORT
⊙	SAMPLE PORT
⊙	CLEAN IN PLACE NOZZLE
⊙	LAMP
R.D.	RUPTURE DISK

DESIGN PROCESS FLOW DATA			
TAG	LOCATION	RATE	UNITS
1	WET CAKE RATE	67,109 Bb/h	65% MC
2	SYRUP RATE	45,752 Bb/h	80% MC
3	NET FEED RATE	112,861 Bb/h	63% MC



CONVEYING SYSTEM BY OTHERS

3 TO WET CAKE PAD

3 TO X-5207/PMXS-12  
DNG 2409-1144-01-01

**THE DATA CONTAINED ON THIS DOCUMENT IS CONFIDENTIAL AND MUST NOT BE USED, PUBLISHED OR REPRODUCED IN WHOLE OR IN PART WITHOUT PRIOR WRITTEN PERMISSION FROM  
© BARR & ROSIN INC.**

NOTES  
 1- ALL INSTRUMENTS AND CONTROLS SUPPLIED BY THE CUSTOMER, EXCEPT AS NOTED.  
 2- WORK THIS DWG IN CONJUNCTION WITH DWG:  
 2409-1144-01-01  
 2409-1144-01-02

FEED TYPE DRYER FOR DDGS (PARTIAL GAS RECYCLE)  
RECOMMENDED PROCESS & INSTRUMENTATION DIAGRAM

BUNGE ERGON VICKSBURG, MISSISSIPPI, USA



SCALE	N/A	N/A
DRAWN	TN	2007.JAN.25
CHECKED	ZD	2007.JAN.26
APPROVED	YMG	2007.JAN.26

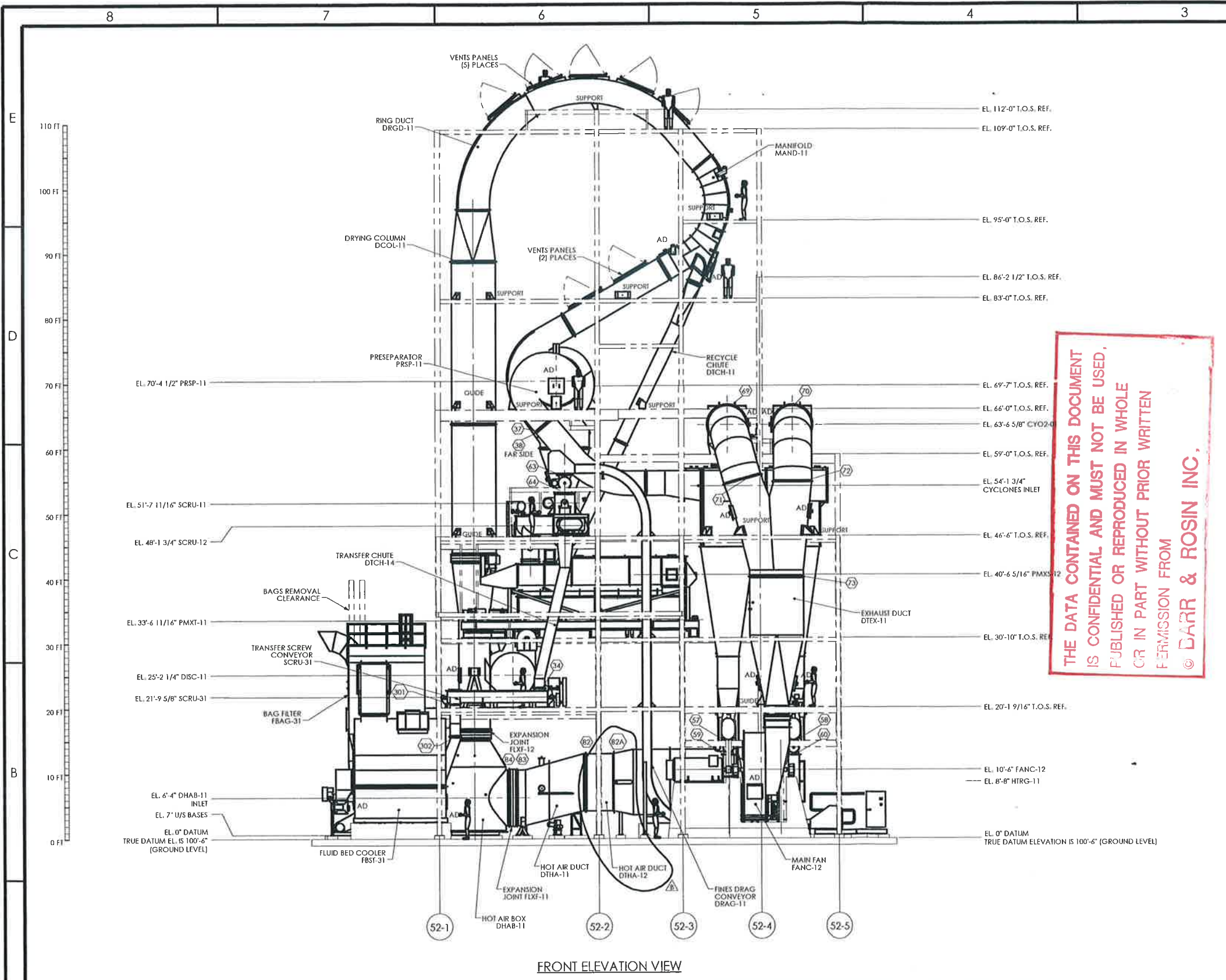
THIS DRAWING, SPECIFICATION AND DATA IS CONFIDENTIAL AND MUST NOT BE USED, PUBLISHED, REPRODUCED IN WHOLE OR IN PART WITHOUT PRIOR WRITTEN PERMISSION FROM BARR-ROSLIN INC. © COPYRIGHT

DWG NO	REV
2409-1144-01-04	C

REV. BY	DATE	CHECKED	APPROVED	REV. BY	DATE	CHECKED	APPROVED	REV. BY	DATE	CHECKED	APPROVED	REV. BY	DATE	CHECKED	APPROVED	REV. BY	DATE	CHECKED	APPROVED										
H				G				F				E				D				C	BG	2007.JUL.17	EC	YMG	B	TN	2007.MAY.17	EC	YMG

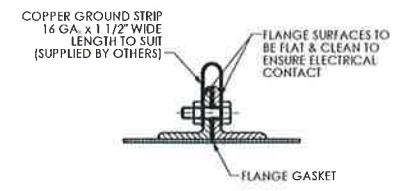
- GENERAL CHANGES TO MEET STANDARDS.

- GENERAL CHANGE TO MEET STANDARD DT3A

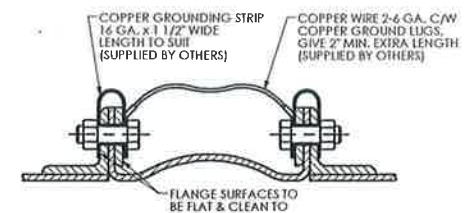


FRONT ELEVATION VIEW

THE DATA CONTAINED ON THIS DOCUMENT IS CONFIDENTIAL AND MUST NOT BE USED, PUBLISHED OR REPRODUCED IN WHOLE OR IN PART WITHOUT PRIOR WRITTEN PERMISSION FROM © BARR & ROSIN INC.



DETAIL 1  
TYPICAL FOR ALL MATING FLANGES



DETAIL 2  
TYPICAL AT ALL FLEXIBLE BOOTS

**NOTES**

- ALL INSULATION BY OTHERS.
- ALL MATING FLANGES TO HAVE GROUNDING STRIPS AND MEET ALL ELECTRICAL CODES. SEE DETAIL 1 & 2.
- NO.'S IN HEXAGONS REPRESENT FLANGE NO.'S FOR ERECTION PURPOSE ONLY.
- ALL EXTERNAL BOLTS TO BE ZINC PLATED.
- ERECTOR TO ALLOW 1" NOMINAL SHIMMING UNDERNEATH BARR-ROSLN EQUIPMENT.
- STEELWORK SHOWN IS A SUGGESTED POSSIBLE STRUCTURE BASED ONLY ON BARR-ROSLN PROPOSED ARRANGEMENT OF SUPPLIED EQUIPMENT. CLIENT TO CONFIRM ALL DIMENSIONS.
- THIS DRAWING BASED ON: ENQ-0603B.
- VENT PANELS MUST NOT BE OBSTRUCTED.
- BARR-ROSLN RECOMMENDS THAT ALL CONCRETE PLINTHS EXTEND A MINIMUM OF 6" ABOVE THE WORKING FLOOR.
- ACCESS AROUND VENT PANELS MUST BE RESTRICTED.
- THIS DRAWING TO BE READ IN CONJUNCTION WITH DRAWINGS XXXX-2144-01-02, XXXX-2144-01-03, XXXX-2144-02-01, XXXX-2144-02-02, XXXX-2144-02-03, XXXX-2144-03-01 AND XXXX-2144-03-02.
- UNLESS OTHERWISE NOTED ALL EQUIPMENT THAT REQUIRES LIMIT SWITCHES WILL BE DESIGNED TO ACCEPT ALLEN-BRADLEY MODEL 802X-A7 SWITCH C/W 8021-W2 LEVER ARM. LIMIT SWITCHES ARE TO BE PROVIDED BY OTHERS.

FOR RTO INTEGRATION LAYOUT SEE DRAWING XXXX-2144-04-01.

G	F	E	D	C	B																		
REV. BY	DATE	CHECKED	APPROVED	REV. BY	DATE	CHECKED	APPROVED	REV. BY	DATE	CHECKED	APPROVED	REV. BY	DATE	CHECKED	APPROVED	REV. BY	DATE	CHECKED	APPROVED	REV. BY	DATE	CHECKED	APPROVED
																GG	2007.MAR.22	YMG	YMG				
												- DTHA-12 ADDED.											
DO NOT SCALE IF IN DOUBT ASK																							
										<p>THIRD ANGLE PROJECTION</p>													

60" x 84" FEED TYPE RING DRYER FOR DDGS  
GENERAL ARRANGEMENT (ELEVATION VIEWS)

BUNGE ERGON VICKSBURG, MISSISSIPPI, USA

SCALE 1/8" = 1'-0"

DRAWN RR 2007.JAN.22

CHECKED YMG 2007.JAN.24

APPROVED YMG 2007.JAN.24

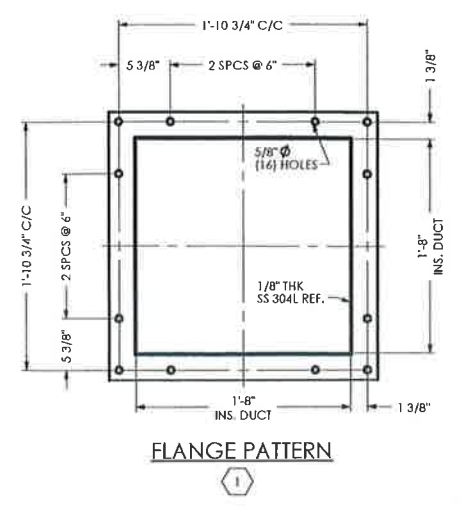
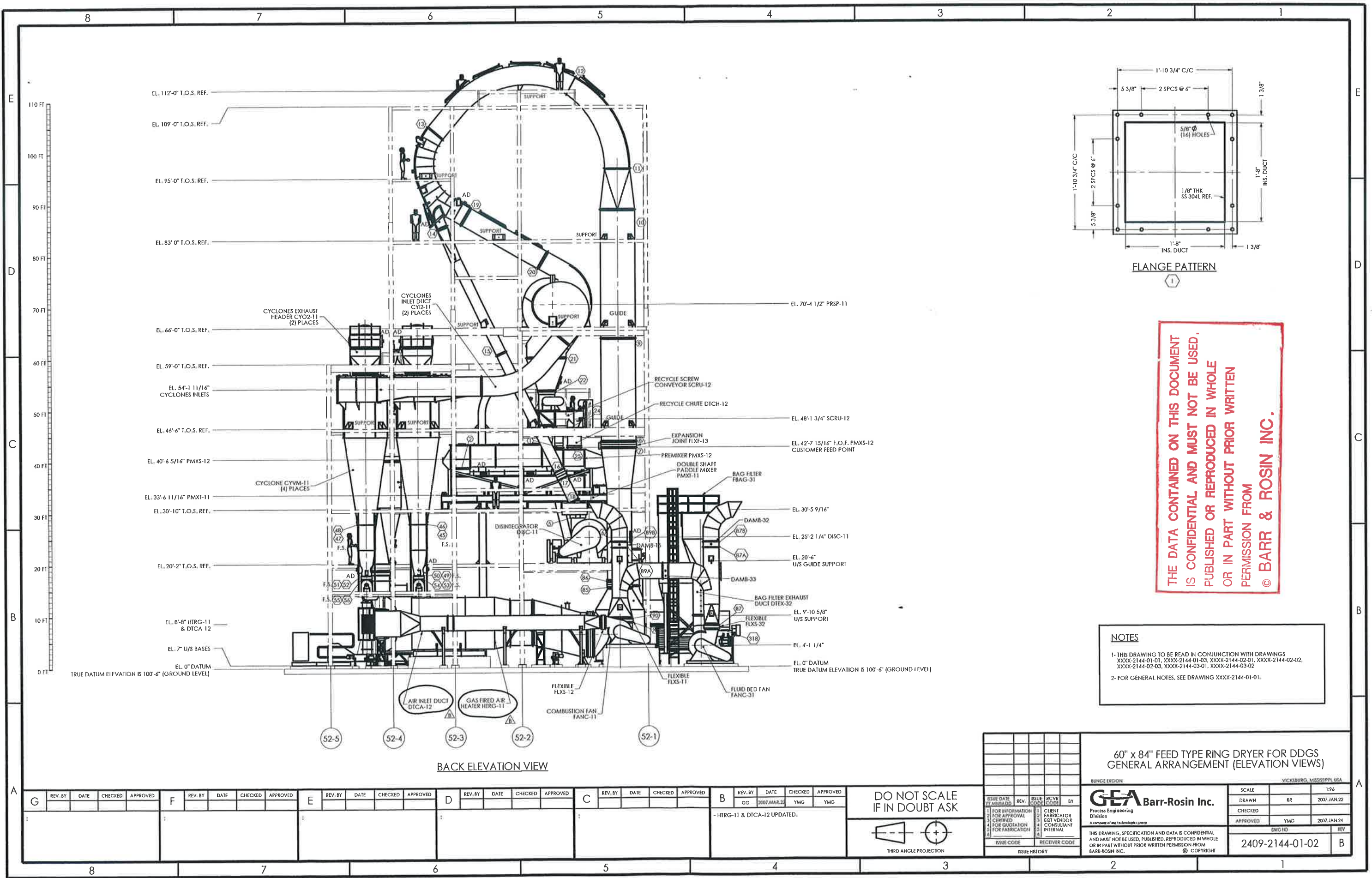
DWG NO. 2409-2144-01-01

REV B

Process Engineering Division

THIS DRAWING, SPECIFICATION AND DATA IS CONFIDENTIAL AND MUST NOT BE USED, PUBLISHED, REPRODUCED IN WHOLE OR IN PART WITHOUT PRIOR WRITTEN PERMISSION FROM BARR-ROSLN INC. © COPYRIGHT





THE DATA CONTAINED ON THIS DOCUMENT  
 IS CONFIDENTIAL AND MUST NOT BE USED,  
 PUBLISHED OR REPRODUCED IN WHOLE  
 OR IN PART WITHOUT PRIOR WRITTEN  
 PERMISSION FROM  
 © BARR & ROSIN INC.

**NOTES**

1- THIS DRAWING TO BE READ IN CONJUNCTION WITH DRAWINGS  
 XXXX-2144-01-01, XXXX-2144-01-03, XXXX-2144-02-01, XXXX-2144-02-02,  
 XXXX-2144-02-03, XXXX-2144-03-01, XXXX-2144-03-02

2- FOR GENERAL NOTES, SEE DRAWING XXXX-2144-01-01.

BACK ELEVATION VIEW

60" x 84" FEED TYPE RING DRYER FOR DDGS  
 GENERAL ARRANGEMENT (ELEVATION VIEWS)

REV. BY	DATE	CHECKED	APPROVED	REV. BY	DATE	CHECKED	APPROVED	REV. BY	DATE	CHECKED	APPROVED	REV. BY	DATE	CHECKED	APPROVED	REV. BY	DATE	CHECKED	APPROVED	

DO NOT SCALE  
 IF IN DOUBT ASK

THIRD ANGLE PROJECTION

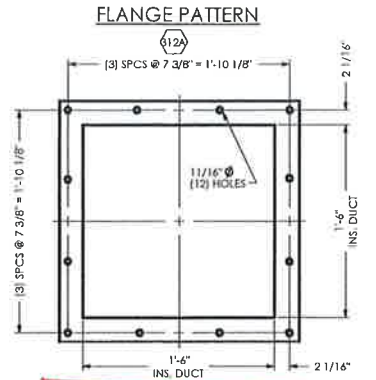
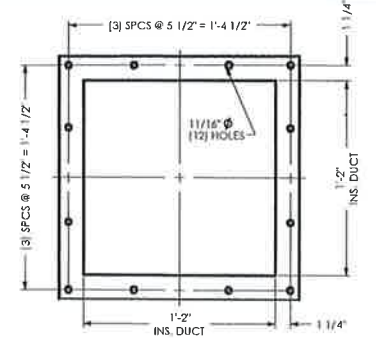
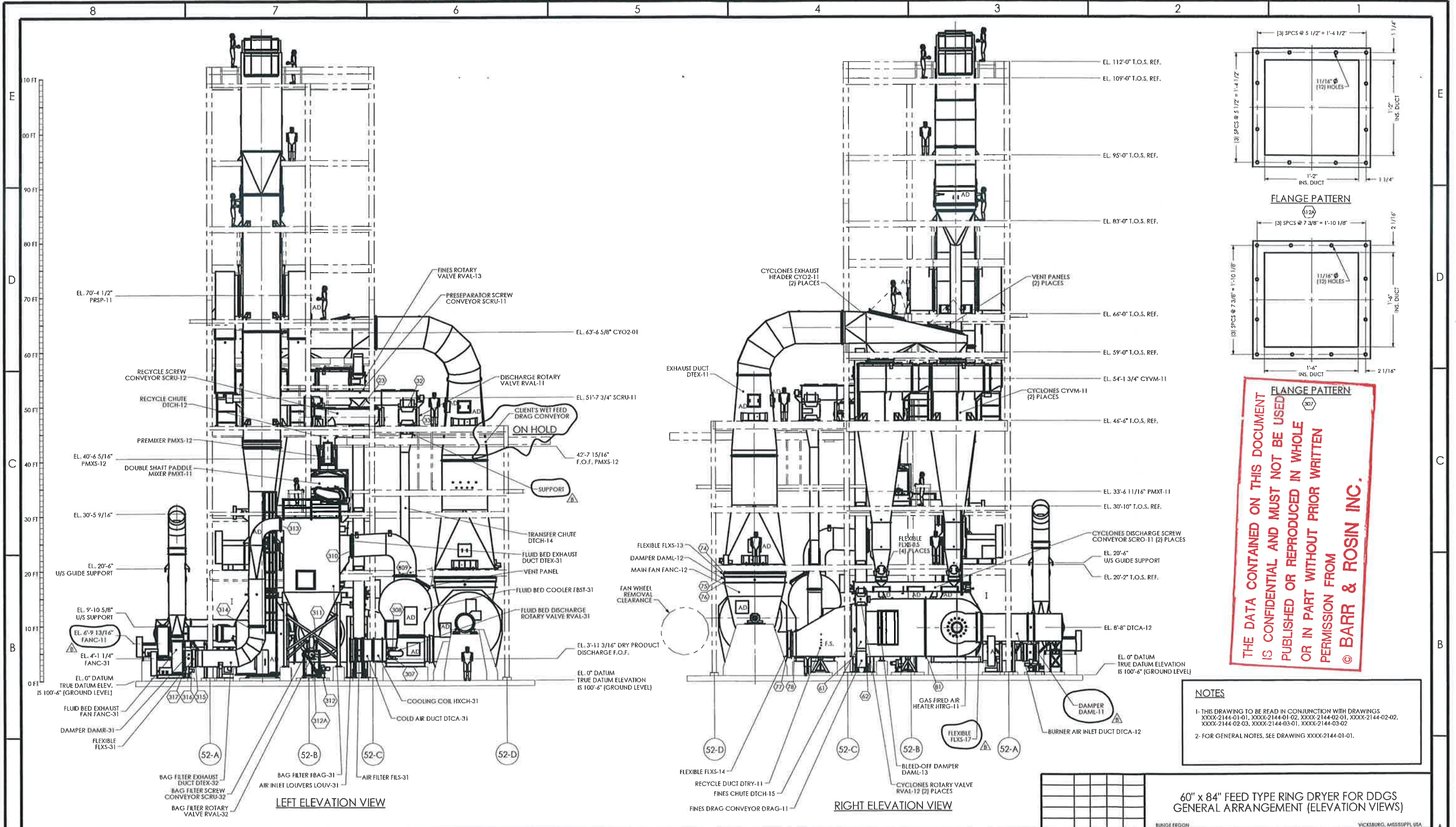
ISSUE DATE	REV.	ISSUE CODE	RCVD CODE	BY
27/03/07	1	GG	YMG	YMG

**GEA Barr-Rosin Inc.**  
 Process Engineering  
 Division  
A constant of engineering excellence

SCALE	1:1
DRAWN	RR
CHECKED	
APPROVED	YMG
DATE	2007 JAN 24
DWG NO	2409-2144-01-02
REV	B

THIS DRAWING, SPECIFICATION AND DATA IS CONFIDENTIAL  
 AND MUST NOT BE USED, PUBLISHED, REPRODUCED IN WHOLE  
 OR IN PART WITHOUT PRIOR WRITTEN PERMISSION FROM  
 BARR-ROSOIN INC. © COPYRIGHT





THE DATA CONTAINED ON THIS DOCUMENT  
 IS CONFIDENTIAL AND MUST NOT BE USED  
 PUBLISHED OR REPRODUCED IN WHOLE  
 OR IN PART WITHOUT PRIOR WRITTEN  
 PERMISSION FROM  
**© BARR & ROSIN INC.**

**NOTES**

- THIS DRAWING TO BE READ IN CONJUNCTION WITH DRAWINGS XXXX-2144-01-01, XXXX-2144-01-02, XXXX-2144-02-01, XXXX-2144-02-02, XXXX-2144-02-03, XXXX-2144-03-01, XXXX-2144-03-02.
- FOR GENERAL NOTES, SEE DRAWING XXXX-2144-01-01.

**60" x 84" FEED TYPE RING DRYER FOR DDGS  
GENERAL ARRANGEMENT (ELEVATION VIEWS)**

REV. BY	DATE	CHECKED	APPROVED	REV. BY	DATE	CHECKED	APPROVED	REV. BY	DATE	CHECKED	APPROVED	REV. BY	DATE	CHECKED	APPROVED	REV. BY	DATE	CHECKED	APPROVED																	
G				F				E				D				C				B	GG	2007.MAR.2	YMG	YMG												

ISSUE DATE	REV.	ISSUE CODE	RCV CODE	BY
1	FOR INFORMATION	1	CLIENT	
2	FOR APPROVAL	2	FABRICATOR	
3	FOR APPROVAL	3	EQUIPMENT	
4	FOR QUOTATION	4	CONSULTANT	
5	FOR FABRICATION	5	INTERNAL	

**GEA Barr-Rosin Inc.**  
 Process Engineering  
 Division  
 A company of *ing* technologies group

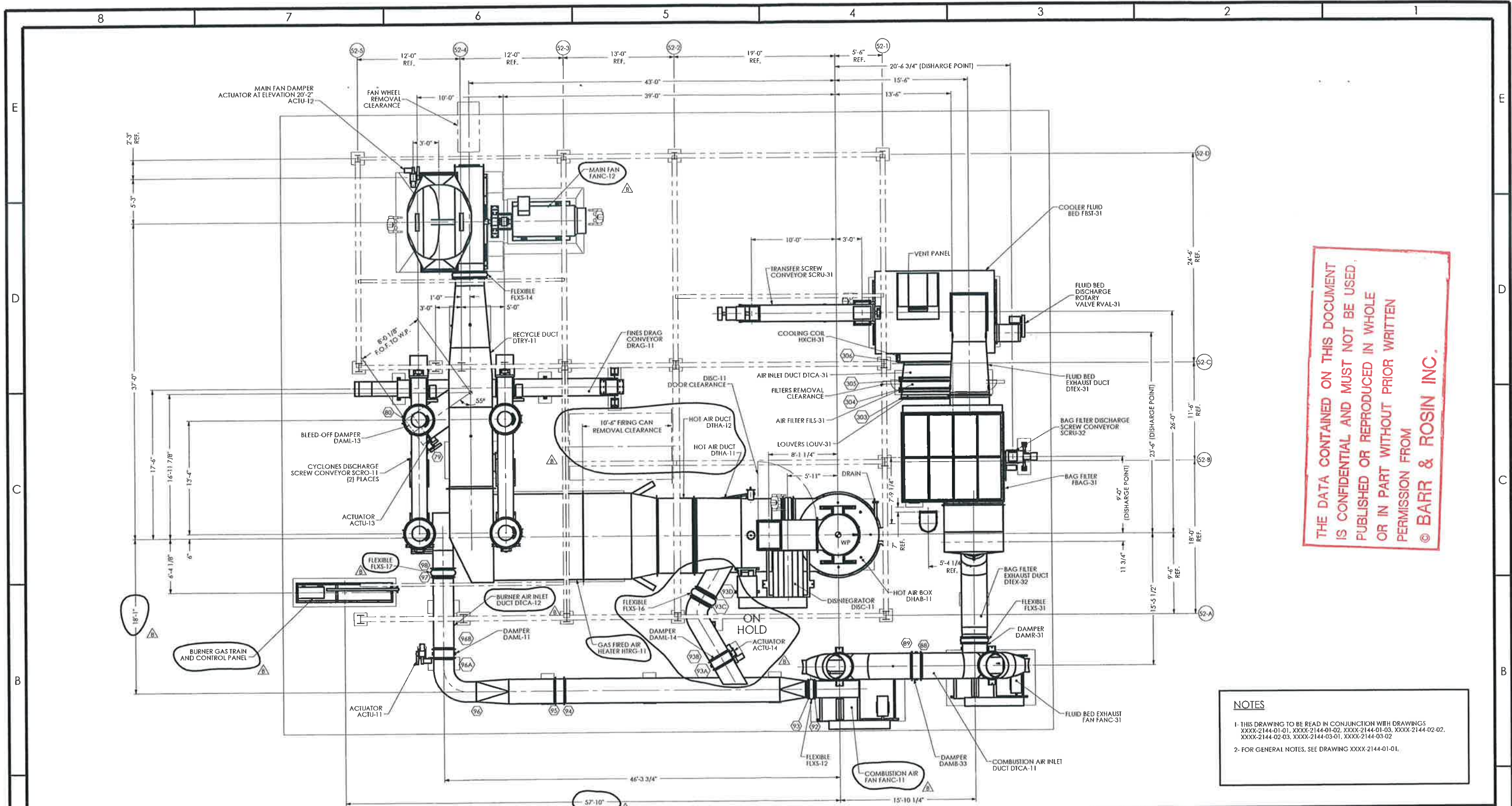
SCALE	1:56
DRAWN	RR
CHECKED	
APPROVED	YMG
DATE	2007.JAN.24
DWG NO	2409-2144-01-03
REV	B

**DO NOT SCALE  
IF IN DOUBT ASK**

THIRD ANGLE PROJECTION

- DAML-11 & FLXS-17 UPDATED.  
 - FANC-11 C/L SHAFT UPDATED.  
 - (2) SUPPORTS ADDED ON DICH-14.





THE DATA CONTAINED ON THIS DOCUMENT  
 IS CONFIDENTIAL AND MUST NOT BE USED,  
 PUBLISHED OR REPRODUCED IN WHOLE  
 OR IN PART WITHOUT PRIOR WRITTEN  
 PERMISSION FROM  
 © BARR & ROSIN INC.

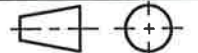
**NOTES**

- THIS DRAWING TO BE READ IN CONJUNCTION WITH DRAWINGS XXXX-2144-01-01, XXXX-2144-01-02, XXXX-2144-01-03, XXXX-2144-02-02, XXXX-2144-02-03, XXXX-2144-03-01, XXXX-2144-03-02
- FOR GENERAL NOTES, SEE DRAWING XXXX-2144-01-01.

**PLAN VIEW FROM ELEVATION 30'-10" TO GROUND LEVEL**  
 ELEVATION 0' DATUM, TRUE DATUM ELEVATION IS 100'-6" (GROUND LEVEL)

- FANC-11 / FANC-12 & DTHA-12 UPDATED.
- DTHA-12 ADDED.
- FLANGE N<sub>0</sub> UPDATED.
- FIRING CAN REMOVAL CLEA. UPDATED.
- STCK-41 LOCATION NOW SHOWN.

**DO NOT SCALE  
IF IN DOUBT ASK**

  
 THIRD ANGLE PROJECTION

G	REV. BY	DATE	CHECKED	APPROVED	F	REV. BY	DATE	CHECKED	APPROVED	E	REV. BY	DATE	CHECKED	APPROVED	D	REV. BY	DATE	CHECKED	APPROVED	C	REV. BY	DATE	CHECKED	APPROVED	B	REV. BY	DATE	CHECKED	APPROVED
																										GG	2007.MAR.22	YMG	YMG

**60' x 84" FEED TYPE RING DRYER FOR DDGS  
GENERAL ARRANGEMENT (PLAN VIEWS)**

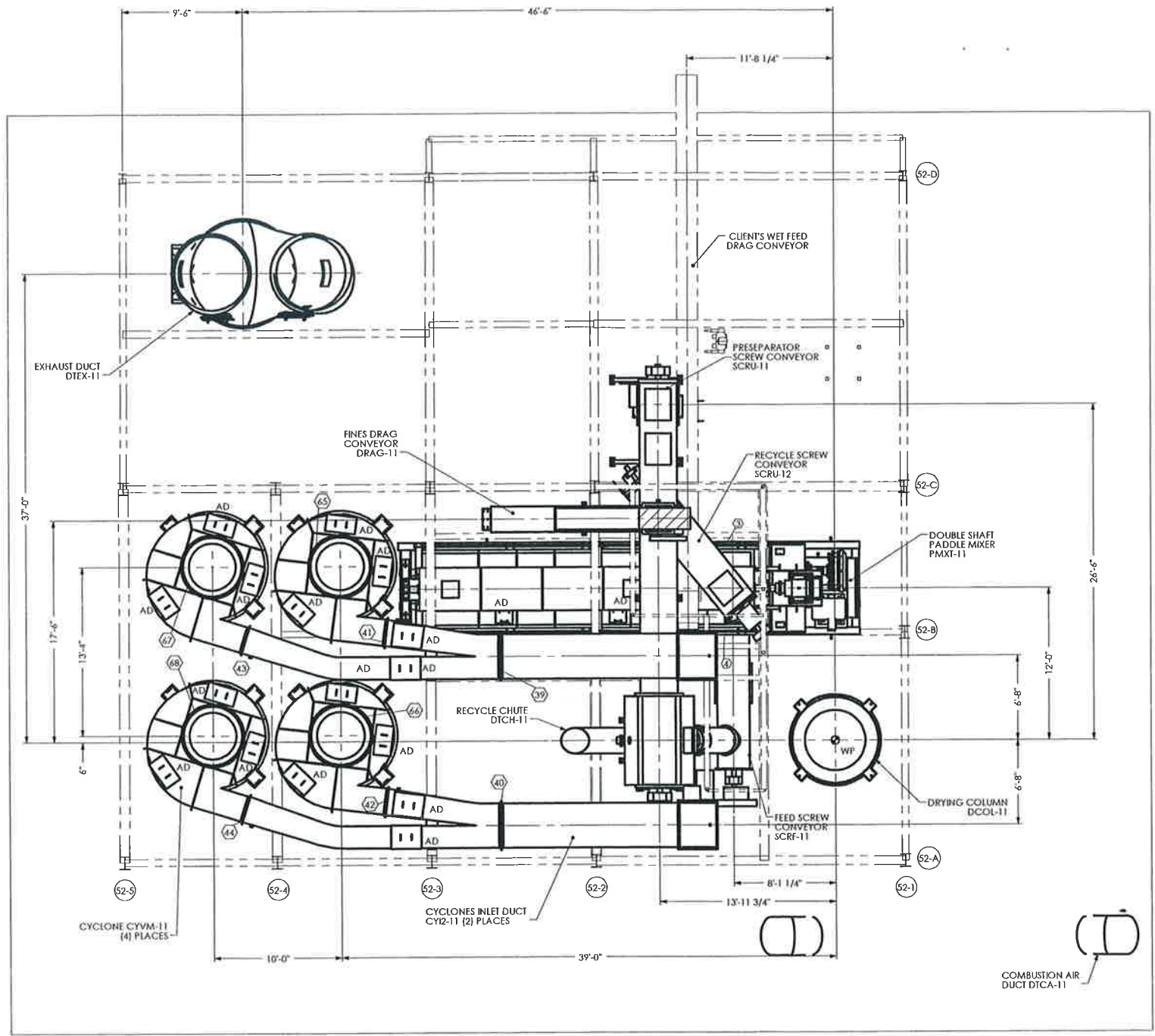
BUNGE IBCOHN VICKSBURG, MISSISSIPPI, USA

**GEA Barr-Rosin Inc.**  
Process Engineering Division  
 A member of mg technologies group

THIS DRAWING, SPECIFICATION AND DATA IS CONFIDENTIAL AND MUST NOT BE USED, PUBLISHED, REPRODUCED IN WHOLE OR IN PART WITHOUT PRIOR WRITTEN PERMISSION FROM BARR-ROSOIN INC. © COPYRIGHT

SCALE	1:64
DRAWN	RR
CHECKED	
APPROVED	YMG
DATE	2007.JAN.24
DWG NO.	2409-2144-02-01
REV	B





PLAN VIEW FROM ELEVATION 59'-0" TO 30'-10"  
ELEVATION 0' DATUM, TRUE DATUM ELEVATION IS 100'-6" (GROUND LEVEL)

THE DATA CONTAINED ON THIS DOCUMENT IS CONFIDENTIAL AND MUST NOT BE USED, PUBLISHED OR REPRODUCED IN WHOLE OR IN PART WITHOUT PRIOR WRITTEN PERMISSION FROM © BARR & ROSIN INC.

NOTES  
1- THIS DRAWING TO BE READ IN CONJUNCTION WITH DRAWINGS XXXX-2144-01-01, XXXX-2144-01-02, XXXX-2144-01-03, XXXX-2144-02-01, XXXX-2144-02-03, XXXX-2144-03-01, XXXX-2144-03-02  
2- FOR GENERAL NOTES, SEE DRAWING XXXX-2144-01-01.

REV. BY	DATE	CHECKED	APPROVED	REV. BY	DATE	CHECKED	APPROVED	REV. BY	DATE	CHECKED	APPROVED	REV. BY	DATE	CHECKED	APPROVED	REV. BY	DATE	CHECKED	APPROVED	

DO NOT SCALE IF IN DOUBT ASK  
THIRD ANGLE PROJECTION

NO CHANGES TO THIS SHEET.

ISSUE DATE	REV	ISSUE CODE	RECEIVER CODE	BY
11/11/2007	1	AMM	DDG	GG

60' x 84" FEED TYPE RING DRYER FOR DDGS  
GENERAL ARRANGEMENT (PLAN VIEWS)

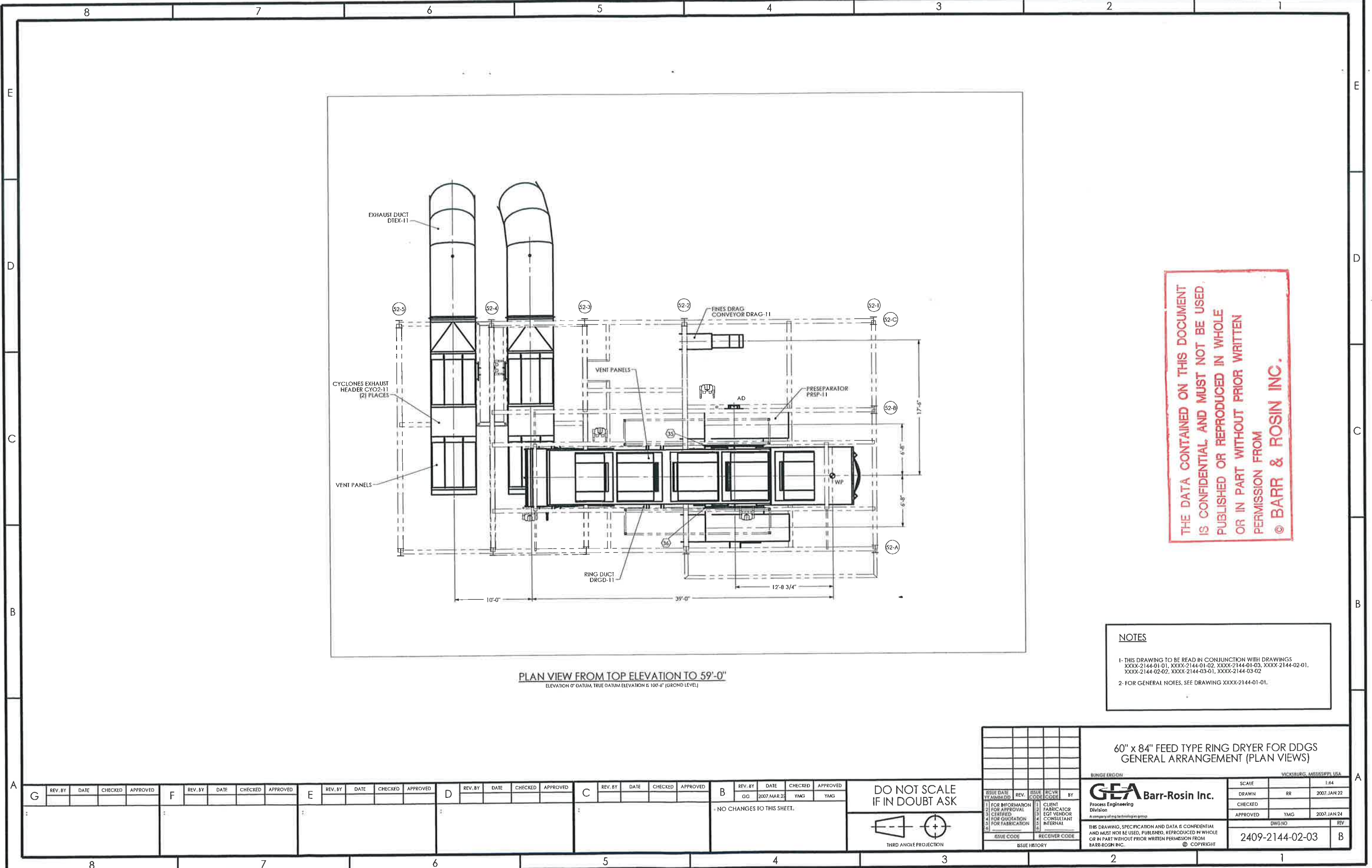
BUNGE EROCON VICKSBURG, MISSISSIPPI, USA

**GEA** Barr-Rosin Inc.  
Process Engineering  
Division  
A company of eng technologies group

THIS DRAWING, SPECIFICATION AND DATA IS CONFIDENTIAL AND MUST NOT BE USED, PUBLISHED, REPRODUCED IN WHOLE OR IN PART WITHOUT PRIOR WRITTEN PERMISSION FROM BARR-ROSOIN INC. © COPYRIGHT

SCALE	1:64
DRAWN	RR 2007.JAN.22
CHECKED	
APPROVED	YMG 2007.JAN.24
DWG NO	2409-2144-02-02
REV	B





PLAN VIEW FROM TOP ELEVATION TO 59'-0"  
 ELEVATION 0' DATUM, TRUE DATUM ELEVATION IS 107'-6" (GROUND LEVEL)

THE DATA CONTAINED ON THIS DOCUMENT  
 IS CONFIDENTIAL AND MUST NOT BE USED,  
 PUBLISHED OR REPRODUCED IN WHOLE  
 OR IN PART WITHOUT PRIOR WRITTEN  
 PERMISSION FROM  
 © BARR & ROSIN INC.

**NOTES**

1- THIS DRAWING TO BE READ IN CONJUNCTION WITH DRAWINGS  
 XXXX-2144-01-01, XXXX-2144-01-02, XXXX-2144-01-03, XXXX-2144-02-01,  
 XXXX-2144-02-02, XXXX-2144-03-01, XXXX-2144-03-02

2- FOR GENERAL NOTES, SEE DRAWING XXXX-2144-01-01.

REV. BY	DATE	CHECKED	APPROVED	REV. BY	DATE	CHECKED	APPROVED	REV. BY	DATE	CHECKED	APPROVED	REV. BY	DATE	CHECKED	APPROVED	REV. BY	DATE	CHECKED	APPROVED	

DO NOT SCALE  
 IF IN DOUBT ASK

THIRD ANGLE PROJECTION

ISSUE DATE	REV.	ISSUE CODE	RCVH	BY
11/20/07	1	AMM/DG		

60" x 84" FEED TYPE RING DRYER FOR DDGS  
 GENERAL ARRANGEMENT (PLAN VIEWS)

BUNGE ERGON  
 VICKIARUNG, MISSISSIPPI, USA

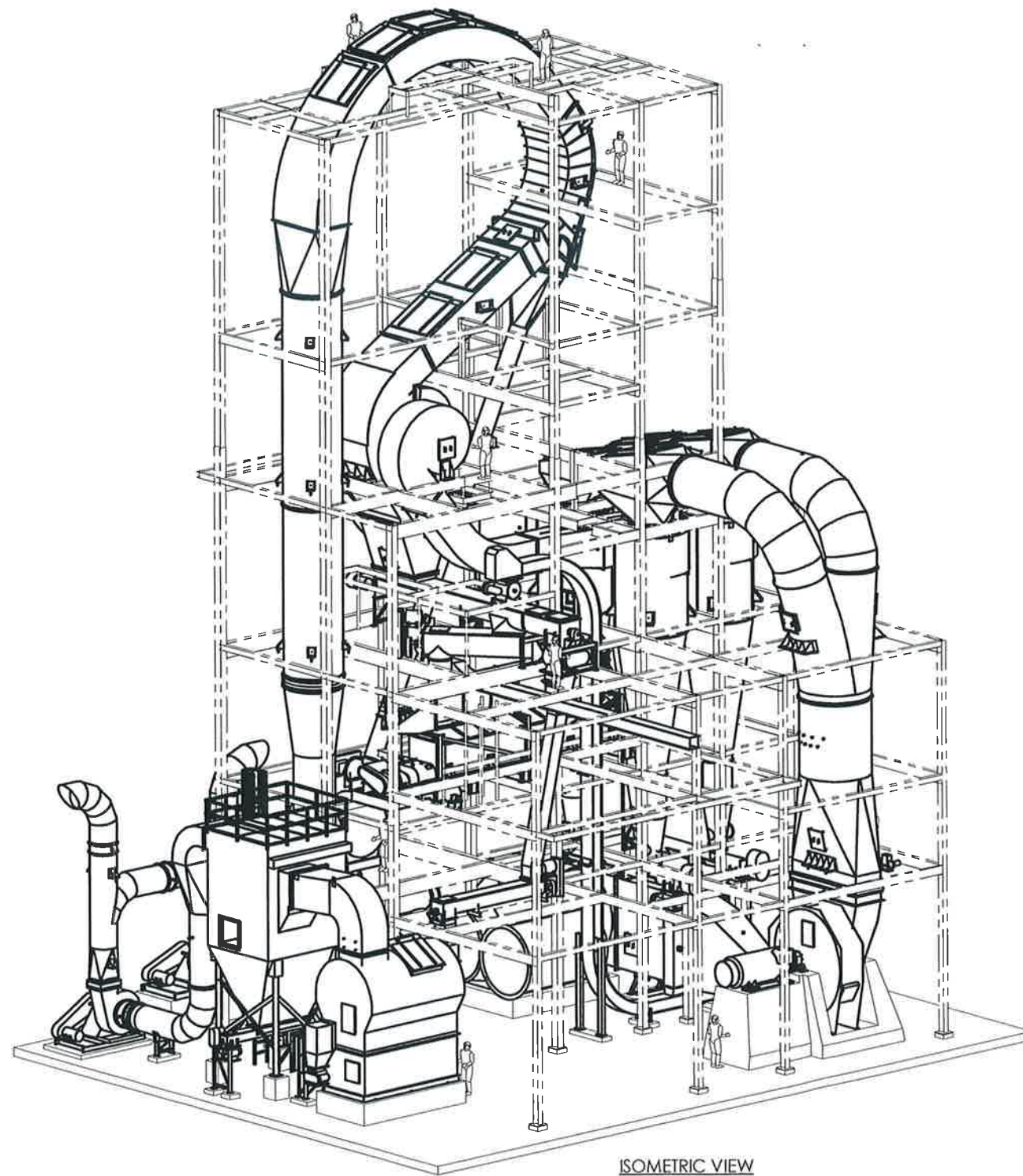
**GEA Barr-Rosin Inc.**  
 Process Engineering  
 Division  
 A company of ag technologies group

THIS DRAWING, SPECIFICATION AND DATA IS CONFIDENTIAL AND MUST NOT BE USED, PUBLISHED, REPRODUCED IN WHOLE OR IN PART WITHOUT PRIOR WRITTEN PERMISSION FROM BARR-ROSN INC. © COPYRIGHT

SCALE	1:64
DRAWN	RR
CHECKED	
APPROVED	YMG
DATE	2007 JAN 24
DWG NO	2409-2144-02-03
REV	B

- NO CHANGES TO THIS SHEET.





ISOMETRIC VIEW

THE DATA CONTAINED ON THIS DOCUMENT IS CONFIDENTIAL, AND MUST NOT BE USED, PUBLISHED OR REPRODUCED IN WHOLE OR IN PART WITHOUT PRIOR WRITTEN PERMISSION FROM © BARR & ROSIN INC.

**NOTES**  
 1- THIS DRAWING TO BE READ IN CONJUNCTION WITH DRAWINGS XXXX-2144-01-01, XXXX-2144-01-02, XXXX-2144-01-03, XXXX-2144-02-01, XXXX-2144-02-02, XXXX-2144-02-03 AND XXXX-2144-03-02.  
 2- FOR GENERAL NOTES, SEE DRAWING XXXX-2144-01-01.

60" x 84" FEED TYPE RING DRYER FOR DDGS  
 GENERAL ARRANGEMENT (ISOMETRIC VIEW)

REV. BY	DATE	CHECKED	APPROVED	REV. BY	DATE	CHECKED	APPROVED	REV. BY	DATE	CHECKED	APPROVED	REV. BY	DATE	CHECKED	APPROVED	REV. BY	DATE	CHECKED	APPROVED	

DO NOT SCALE IF IN DOUBT ASK

THIRD ANGLE PROJECTION

ISSUE DATE	REV.	ISSUE CODE	RCVR CODE	BY
YYMMDD				

BUNGE ERGON  
 VICKSBURG, MISSISSIPPI USA

**GEA Barr-Rosin Inc.**  
 Process Engineering Division  
 A concept of the Technologies group

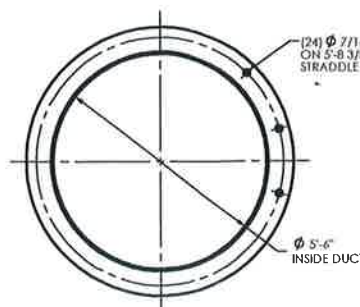
THIS DRAWING, SPECIFICATION AND DATA IS CONFIDENTIAL AND MUST NOT BE USED, PUBLISHED, REPRODUCED IN WHOLE OR IN PART WITHOUT PRIOR WRITTEN PERMISSION FROM BARR-ROSOIN INC. © COPYRIGHT

SCALE	1:96
DRAWN	RR 2007.JAN.23
CHECKED	
APPROVED	YMG 2007.JAN.24
DWG NO	REV
2409-2144-03-01	B



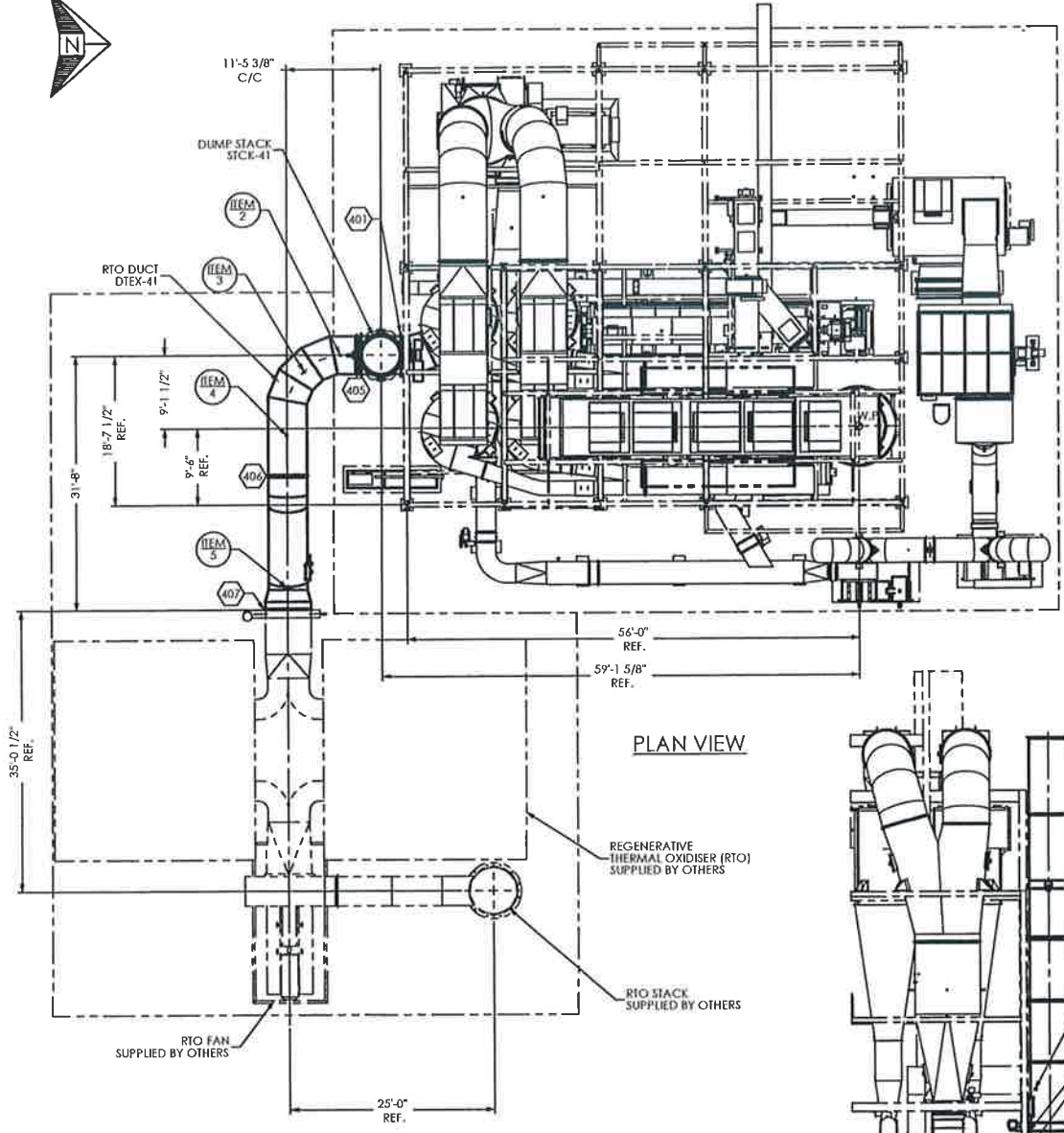




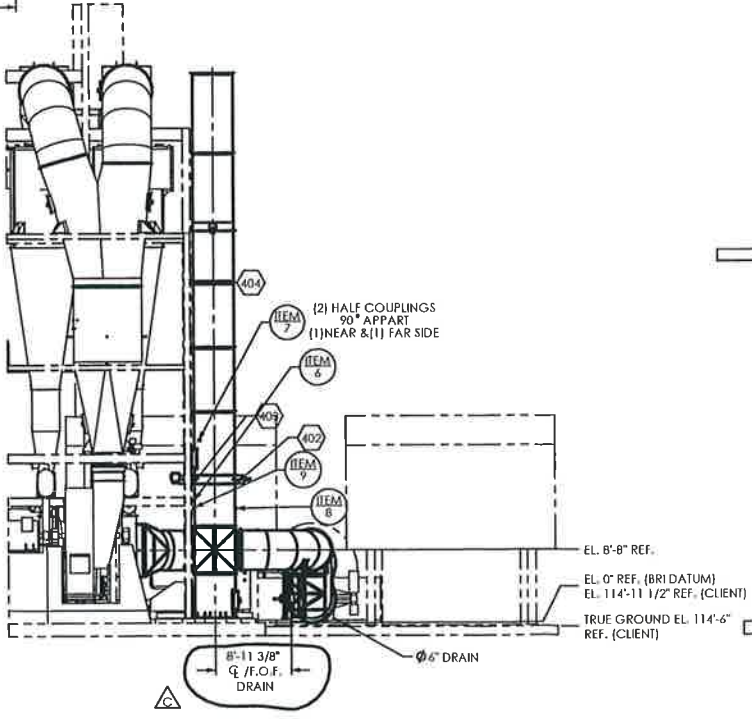


THE DATA CONTAINED ON THIS DOCUMENT IS CONFIDENTIAL AND MUST NOT BE USED, PUBLISHED OR REPRODUCED IN WHOLE OR IN PART WITHOUT PRIOR WRITTEN PERMISSION FROM © BARR & ROSIN INC.

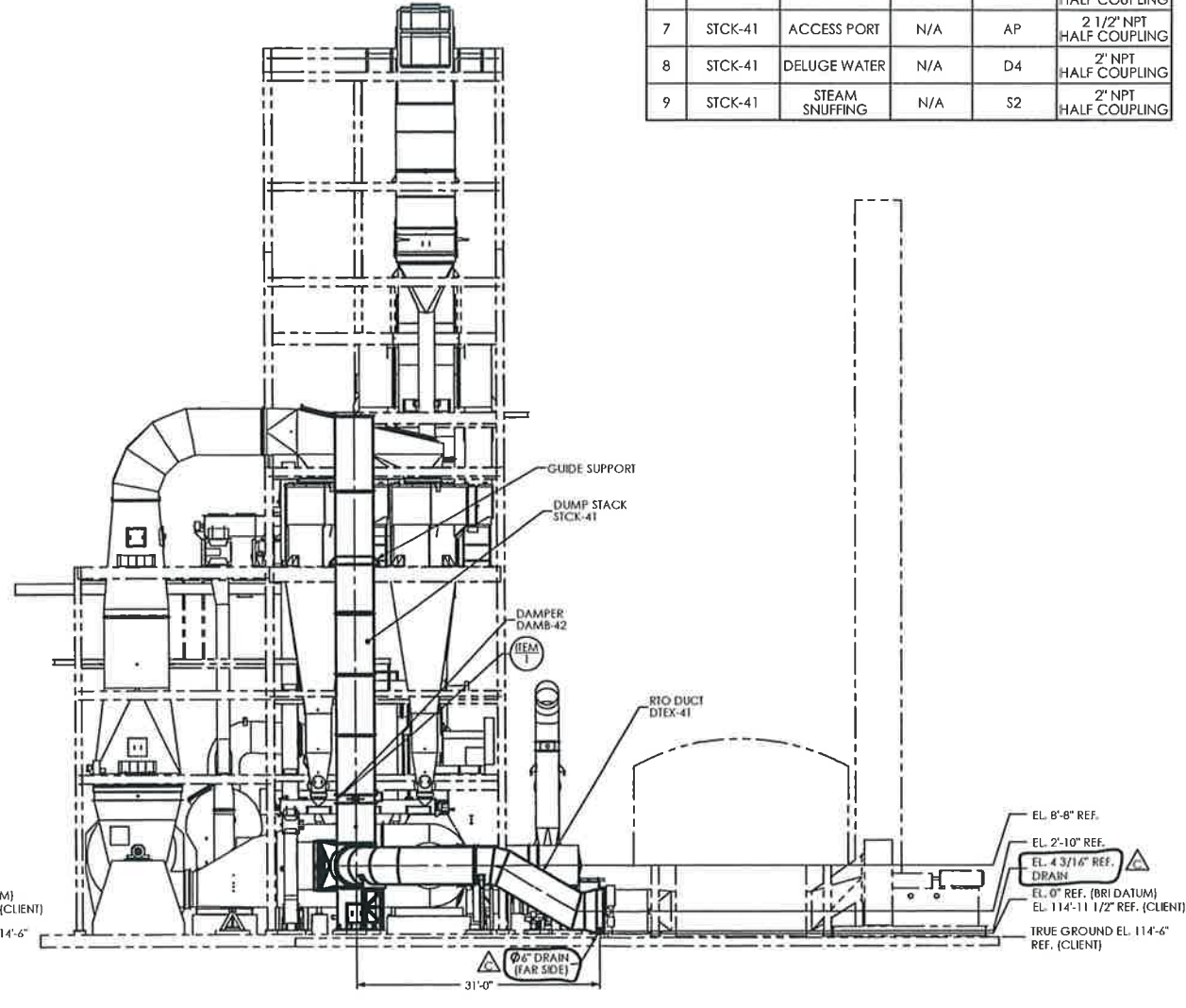
INSTRUMENTATION TABLE					
ITEM #	EQUIPMENT	CONTROL DESCRIPTION	CONTROL SYSTEM	DRYER TAG #	COUPLING SIZE
1	DAMB-42	LIMIT SWITCH	BMS	ZSC-52197A	N/A
				ZSO-52197A	N/A
			DCS	ZSC-52197B	N/A
				ZSO-52197B	N/A
2	DTEX-41	PRESSURE	DCS	PT-52114	1/2" NPT HALF COUPLING
3	DTEX-41	TEMPERATURE	DCS	TT-52116	3/4" NPT HALF COUPLING
4	DTEX-41	TEMPERATURE	DCS	TT-52208	3/4" NPT HALF COUPLING
5	DTEX-41	TEMPERATURE	DCS	TT-52209	3/4" NPT HALF COUPLING
6	STCK-41	TEMPERATURE	DCS	TT-52115	3/4" NPT HALF COUPLING
7	STCK-41	ACCESS PORT	N/A	AP	2 1/2" NPT HALF COUPLING
8	STCK-41	DELUGE WATER	N/A	D4	2" NPT HALF COUPLING
9	STCK-41	STEAM SNUFFING	N/A	S2	2" NPT HALF COUPLING



PLAN VIEW



ELEVATION VIEW LOOKING EAST



ELEVATION VIEW LOOKING NORTH

BRI ELEVATION DATUM IS 0'-0" REPRESENTS CLIENT TRUE ELEVATION 114'-11 1/2" & CLIENT TRUE GROUND ELEVATION IS 114'-6"

REV. BY	DATE	CHECKED	APPROVED	REV. BY	DATE	CHECKED	APPROVED	REV. BY	DATE	CHECKED	APPROVED	REV. BY	DATE	CHECKED	APPROVED	REV. BY	DATE	CHECKED	APPROVED	
G				F				E				D				C	RR	2007 OCT 11	PG	EB
- REVISED DRAIN ELEV. FROM 5 3/16" TO 4 3/16" - REVISED LOCATION OF DRAIN FROM NEAR SIDE TO FAR SIDE AS SHOWN. - REVISED DISTANCE FROM STACK Q TO DRAIN F.O.F. WAS 13'-11 3/8" NOW 8'-11 3/8". - ADDED INSTRUMENTATION TABLE. - REVISED ELEVATIONS AS SHOWN. - ADDED BRI & CLIENT EL. NOTE AS SHOWN. - REVISED INSTRUMENTATION TAGGING BY ITEM # - REVISED NOTE FOR ITEM 7 AS SHOWN.																				

DO NOT SCALE IF IN DOUBT ASK

THIRD ANGLE PROJECTION

ISSUE DATE 11/11/09		REV. 1		ISSUE CODE 0001		R/C VR CODE 0001		BY YMG	
1 FOR INFORMATION 2 FOR APPROVAL 3 FOR VENDOR 4 FOR QUOTATION 5 FOR FABRICATION		1 CLIENT 2 FABRICATOR 3 COI VENDOR 4 CONSULTANT 5 INTERNAL		ISSUE CODE 0001		RECEIVER CODE 0001		ISSUE HISTORY	

60" x 84" FEED TYPE RING DRYER FOR DDGS  
RTO DUCT GENERAL ARRANGEMENT

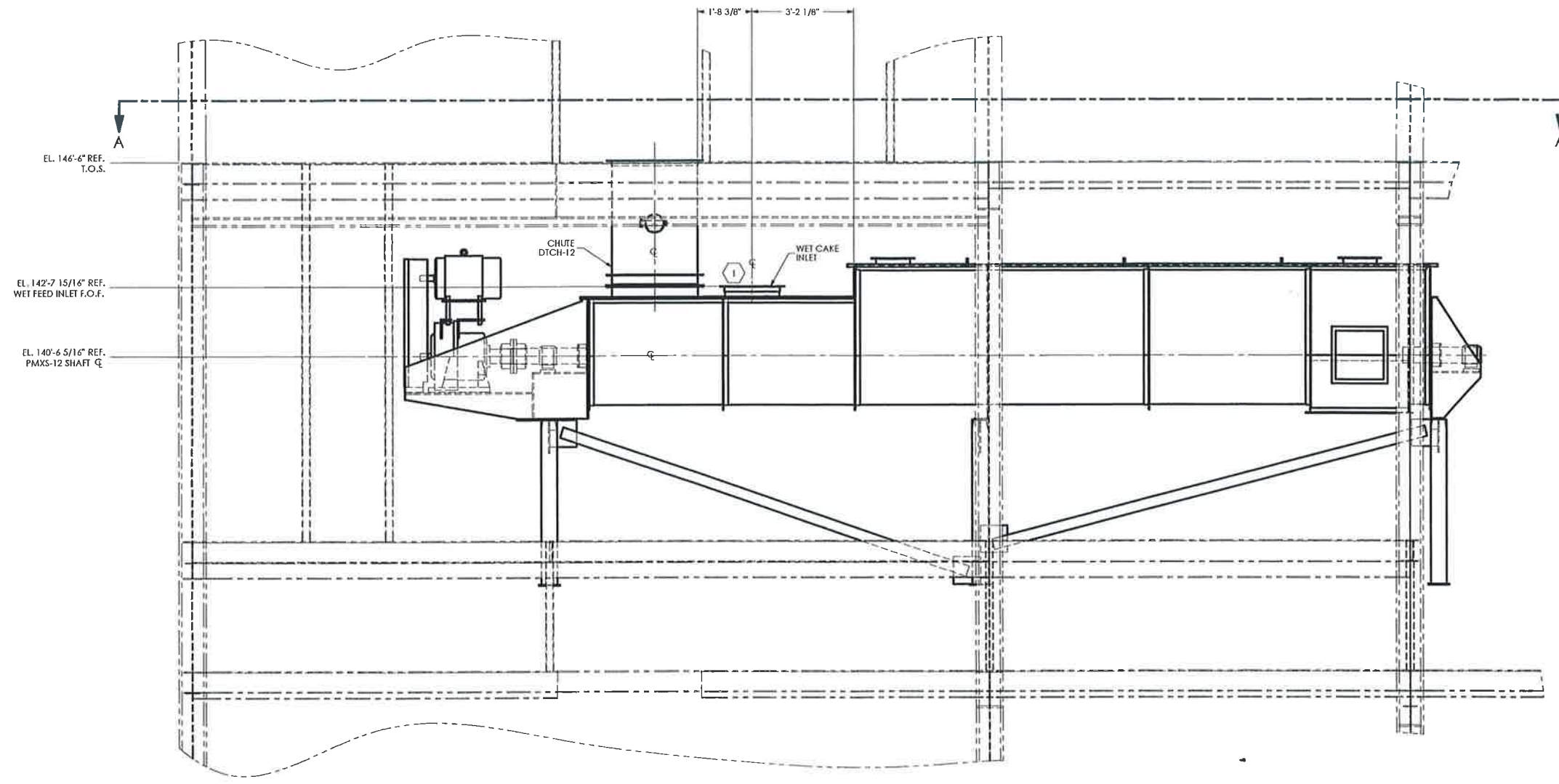
BUNDE ERGOH VICKSBURG, MISSISSIPPI USA

**GEA** Barr-Rosin Inc.  
Process Engineering Division

THIS DRAWING, SPECIFICATION AND DATA IS CONFIDENTIAL AND MUST NOT BE USED, PUBLISHED, REPRODUCED IN WHOLE OR IN PART WITHOUT PRIOR WRITTEN PERMISSION FROM BARR-ROSOIN INC. © COPYRIGHT

SCALE	1:128
DRAWN	RR
CHECKED	
APPROVED	
DWG NO	2409-2144-04-01
REV	C





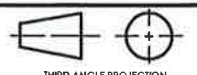
ELEVATION VIEW

THE DATA CONTAINED ON THIS DOCUMENT IS CONFIDENTIAL AND MUST NOT BE USED, PUBLISHED OR REPRODUCED IN WHOLE OR IN PART WITHOUT PRIOR WRITTEN PERMISSION FROM © BARR & ROSIN INC.

60" x 84" FEED TYPE RING DRYER FOR DDGS WET FEED EQUIPMENT											
VICKSBURG, MISSISSIPPI, USA										VICKSBURG, MISSISSIPPI, USA	
<b>GEA Barr-Rosin Inc.</b>											
Process Engineering Division											
A company of ag technologies group											
THIS DRAWING, SPECIFICATION AND DATA IS CONFIDENTIAL AND MUST NOT BE USED, PUBLISHED, REPRODUCED IN WHOLE OR IN PART WITHOUT PRIOR WRITTEN PERMISSION FROM BARR-ROSOIN INC. © COPYRIGHT											
2409-2144-05-01										REV A	

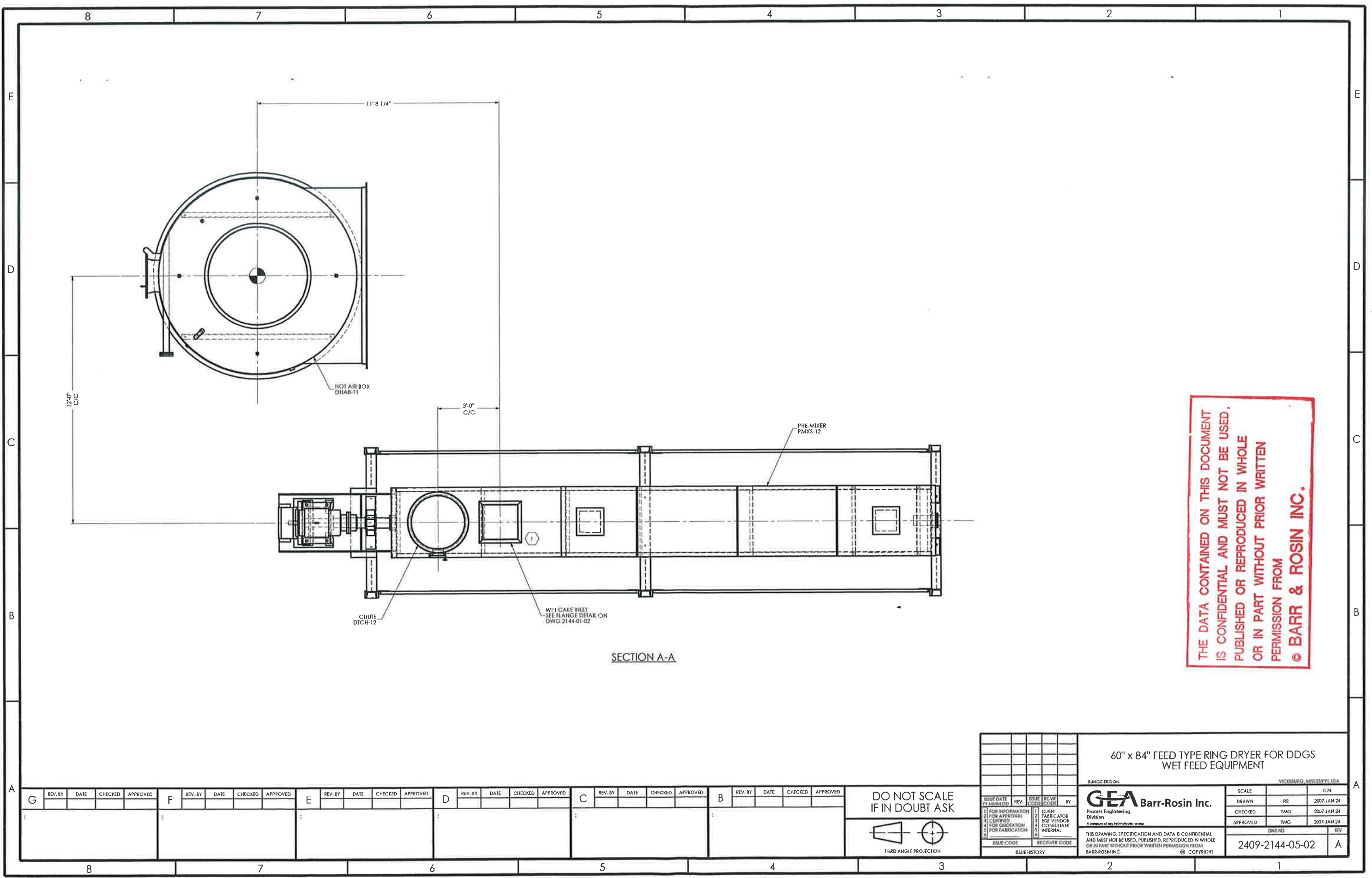
REV. BY	DATE	CHECKED	APPROVED	REV. BY	DATE	CHECKED	APPROVED	REV. BY	DATE	CHECKED	APPROVED	REV. BY	DATE	CHECKED	APPROVED	REV. BY	DATE	CHECKED	APPROVED

DO NOT SCALE IF IN DOUBT ASK



THIRD ANGLE PROJECTION

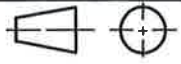
ISSUE DATE	REV.	ISSUE CODE	RCVH CODE	BY



THE DATA CONTAINED ON THIS DOCUMENT  
 IS CONFIDENTIAL AND MUST NOT BE USED,  
 PUBLISHED OR REPRODUCED IN WHOLE  
 OR IN PART WITHOUT PRIOR WRITTEN  
 PERMISSION FROM  
 © BARR & ROSIN INC.

G	F	E	D	C	B
REV. BY	REV. BY	REV. BY	REV. BY	REV. BY	REV. BY
DATE	DATE	DATE	DATE	DATE	DATE
CHECKED	CHECKED	CHECKED	CHECKED	CHECKED	CHECKED
APPROVED	APPROVED	APPROVED	APPROVED	APPROVED	APPROVED

DO NOT SCALE  
IF IN DOUBT ASK



THIRD ANGLE PROJECTION

ISSUE DATE	REV.	ISSUE CODE	RCVR CODE	BY

**60" x 84" FEED TYPE RING DRYER FOR DDGS  
WET FEED EQUIPMENT**

VICKSBURG, MISSISSIPPI, USA

BUNGE ERGON

**GEA** Barr-Rosin Inc.  
Process Engineering  
Division  
A company of ag technologies group

SCALE	RR	1/24
DRAWN	RR	2007 JAN 24
CHECKED	YMG	2007 JAN 24
APPROVED	YMG	2007 JAN 24

THIS DRAWING, SPECIFICATION AND DATA IS CONFIDENTIAL AND MUST NOT BE USED, PUBLISHED, REPRODUCED IN WHOLE OR IN PART WITHOUT PRIOR WRITTEN PERMISSION FROM BARR-ROSLN INC. © COPYRIGHT

DWG NO: 2409-2144-05-02 REV: A