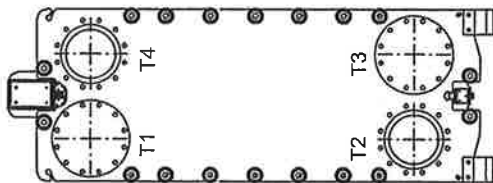


Designed constructed and stamped in accordance with 2004 ASME Code and latest Addendum.

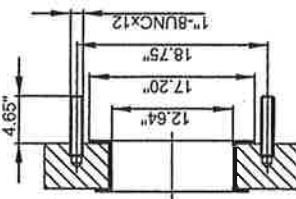
This is a general drawing. Additional parts, if required, like protection sheets, inspection covers, etc. are not displayed.

PRESSURE PLATE

(MOVABLE)
SECTION A-A
PP = 3.15"

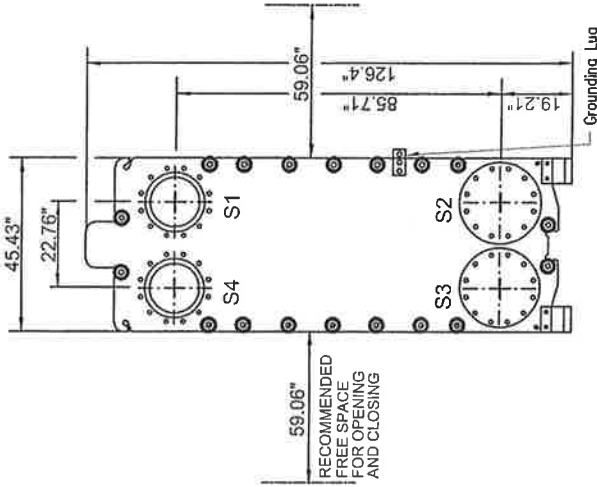


ASME 150 14"
SS
METAL LINING
T1,T2,T3,T4

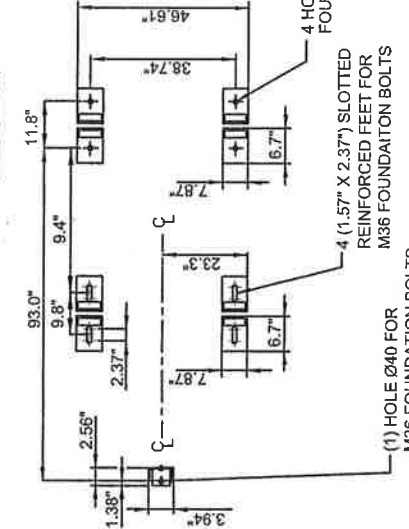
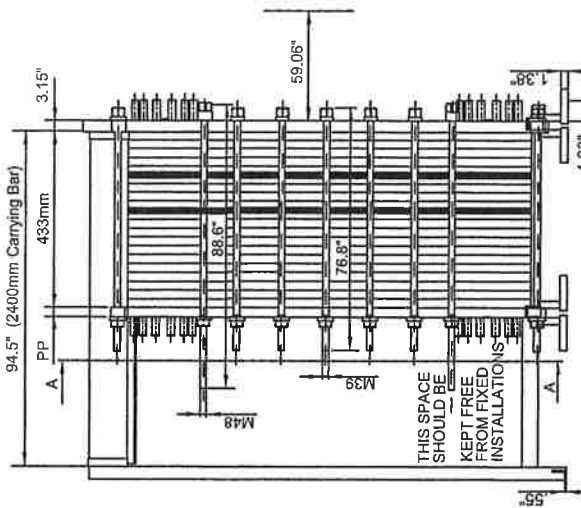
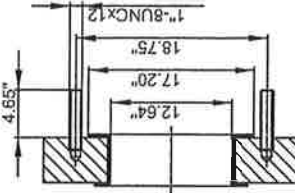


FRAME PLATE

(FIXED)



ASME 150 14"
SS
METAL LINING
S1,S2,S3,S4



NOTE: (2) STAINLESS STEEL PARTITION PLATES.

REMARKS	SIDE1	SIDE2	GASKET	NBRP CLIP-ON
DESIGN PRESSURE	100 psig	100 psig	PLATE MATERIAL	ALLOY 316
TEST PRESSURE	130 psig	130 psig	PLATE THICKNESS	0.60 mm
MAX TEMPERATURE	200 °F	200 °F	HEATING SURFACE	934.8 ft²
MIN TEMPERATURE	32 °F	32 °F	PLATE GROUPING	3*8A11/1*12B05 + 1*13B05
MAWP	100 psig	100 psig	OPERATING WEIGHT	13149 lb
MDMT	-20 °F		NETWEIGHT	11451 lb

SUPPLIER	REF.	ITEM NO:
AGENT/REF.	6714-40	E-3102
CUSTOMER NAME / REF. NO.	YEAST PROP COOLER	
SIGN.	RISKCATEGORY	
PSS	N/A	

PLATE HEAT EXCHANGER

WideGap350S-FG
ASME

		SERIAL NO.	REV
		30110-68346	No. 4
DATE	2007-07-11		

TOTAL LENGTH	108.0"	LIQUID VOL.	19.3 ft³
TOTAL WIDTH	46.61"	PRESSURE DROP	8.278 psi
TOTAL HEIGHT	126.4"	FLOW RATE	310300 lb/h
			271700 lb/h
			5.158 psi

REV 4: ADDED REINFORCED FEET. ALL DIMENSIONS IN INCHES. TOLERANCE +/- .25 INCH.

SIDE	MEDIA	INLET	TEMP.	OUTLET	TEMP.	FLOW RATE	PRESSURE DROP	LIQUID VOL.
1	Corn Mash E-3103	S1	90.0 °F	T2	80.0 °F	310300 lb/h	8.278 psi	19.3 ft³
2	Water	T4	70.0 °F	S4	80.0 °F	271700 lb/h	5.158 psi	8.9 ft³

**Alfa Laval, Plate Heat Exchanger
Channel Plate Installation Description**

2007-02-06

Customer: Delta T SU Order No: 6714-40
 Model : WideGap350S-FG Serial No: 30110-68346
 Customer PO: 4500129967 Item No: E-3102

Plate material and Thickness: ALLOY 316 0.60 mm

A Dimension: 433 mm

	Hot side	Cold side
Grouping:	3*8A11	1*12B05 + 1*13B05
Sealing material:	NBRP CLIP-ON	NBRP CLIP-ON
Port Locations:	S1 -> T2	T4 -> S4

Connection material: Stainless steel Stainless steel

Inspection Cover S2, S3, T1, T3

Port hole with flow on the gasketed side: U

Port hole sealed with O-ring: O

Plates are assembled with the gasket side facing the frame plate.

Plate no.	Plate code no.	Plate Pattern	Punched corner of the plate				Flow direction on the gasket side of the plate	
			upper left	lower left	lower right	upper right		
			S1	S2	S3	S4		
			=>=	= =	= =	=>=		
1	39506005 83	TL35 S1R	B	O	O	O	O	
2	39506006 03	TL35 S1V	A	O	O	U --->--	U	Up
3	39506005 03	TL35 S1R	B	U --->--	U	O	O	Down
4	39506006 03	TL35 S1V	A	O	O	U --->--	U	Up
5	39506005 03	TL35 S1R	B	U --->--	U	O	O	Down
6,	8, ..., 12	39506006 03	TL35 S1V	A				
7,	9, ..., 13	39506005 03	TL35 S1R	B				
14	39506006 03	TL35 S1V	A	O	O	U --->--	U	Up
15	39506005 03	TL35 S1R	B	U --->--	U	O	O	Down
16	39506006 03	TL35 S1V	A	O	O	U --->--	U	Up
17	39506005 03	TL35 S1R	B	U --->--	U	O	O	Down
18	39506006 65	TL35 S1V	A		O	U --->--	U	Up
		PARTITION PLATE		O	O	O	O	
19	39506006 85	TL35 S1V	A		O	O	O	
20	39506005 03	TL35 S1R	B	U --<---	U	O	O	Up
21	39506006 03	TL35 S1V	A	O	O	U --->--	U	Up
22	39506005 03	TL35 S1R	B	U --<---	U	O	O	Up
23	39506006 03	TL35 S1V	A	O	O	U --->--	U	Up
24	39506005 03	TL35 S1R	B	U --<---	U	O	O	Up
25	39506006 66	TL35 S1V	A	O	O	U --->--		Up
		PARTITION PLATE		O	O	O		
26	39506006 86	TL35 S1V	A	O	O	O		
27	39506005 03	TL35 S1R	B	U --<---	U	O	O	Up
28	39506006 03	TL35 S1V	A	O	O	U --<---	U	Down
29	39506005 03	TL35 S1R	B	U --<---	U	O	O	Up

30	39506006 03	TL35 S1V	A	O	O	U --<---	U	Down
31	39506005 03	TL35 S1R	B	U --->--	U	O	O	Up
32	39506006 03	TL35 S1V	A	O	O	U --<---	U	Down
33	39506005 03	TL35 S1R	B	U --->--	U	O	O	Up
34	39506006 03	TL35 S1V	A	O	O	U --<---	U	Down
35	39506005 06	TL35 S1R	B	U --->--		O	O	Up
36	39506006 10	TL35 S1V	A	O		U --<---	U	Down
37	39506005 03	TL35 S1R	B	U --->--	U	O	O	Down
38	39506006 03	TL35 S1V	A	O	O	U --<---	U	Down
39	39506005 03	TL35 S1R	B	U --->--	U	O	O	Down
40	39506006 03	TL35 S1V	A	O	O	U --<---	U	Down
41,	43, ..., 45	39506005 03	TL35 S1R	B				
42,	44, ..., 46	39506006 03	TL35 S1V	A				
47	39506005 03	TL35 S1R	B	U --->--	U	O	O	Down
48	39506006 03	TL35 S1V	A	O	O	U --<---	U	Down
49	39506005 03	TL35 S1R	B	U --->--	U	O	O	Down
50	39506006 03	TL35 S1V	A	O	O	U --<---	U	Down
51	39506005 03	TL35 S1R	B	U --->--	U	O	O	Down
52	39506006 63	TL35 S1V	A	O	O	U --<---	U	Down
	PRESSURE PLATE			= =	=<=	= =	=<=	
				T1	T2	T3	T4	

Article No:	Quantity:
39506005 83	1
39506006 03	21
39506005 03	23
39506006 65	1
39506006 85	1
39506006 66	1
39506006 86	1
39506005 06	1
39506006 10	1
39506006 63	1



Alfa Laval Plate Heat Exchanger Specification

Customer : Delta-T Corp.
Project : Bunge Ergon Vicksburg, LLC - Vicksburg, MS
Model : Widegap350S-FG
PO. : 4500129967
Serial No. : 30110-68346
Item : E-3102 Yeast Prop Cooler #1 **Date:** 9/10/2007

		<u>Hot side</u>	<u>Cold side</u>
Fluid		Corn Mash	Water
Mass flow rate	lb/h	310300	271700
Inlet temperature	°F	90.0	70.0
Outlet temperature	°F	80.0	80.0
Pressure drop	psi	8.278	5.158
Density	lb/ft ³	66.40	62.20
Specific heat capacity	Btu/lb, °F	0.88	1.00
Thermal conductivity	Btu/ft, h, °F	0.330	0.352
Viscosity inlet	cP	25.0	0.981
Viscosity outlet	cP	25.0	0.862
Heat exchanged	kBtu/h	2722	
L.M.T.D.	°F	10.0	
Heat transfer area	ft ²	934.8	
Rel. directions of fluids		Countercurrent	
Number of plates		50	
Number of passes		3	2
Plate material		ALLOY 316	
Sealing material		NBRP	NBRP
Connection material		Stainless Steel	Stainless Steel
Connection standard		14"	14"
Pressure vessel code		ASME Sect VIII latest Addendum	
Design pressure	psig	100.0	100.0
Test pressure	psig	130.0	130.0
Design temperature	°F	200.0	
Overall length x width x height	in	110 x 46 x 126	
Net weight, empty / operating	lb	10842 / 12688	

Performance is conditioned on the accuracy of customer's data and customer's ability to supply equipment and products in conformity therewith.

26344

Certified by

Alfa Laval - Richmond, VA

Single column, split to all cylinders
Baffle, copper, 100/100/100/100/100/100

100 PSI AT 200 F

-20 F AT 100 PSI

30110-68346 | Year | 2007

WIDEGAP350S-FG

934.80 SQ.FT.

433MM W/52 0.60 MM PLTS

649058

P.O. 4500129967

TAG YEAST PROP COOLER

TAG E-3102

Customer Service

866-ALFALAVAL WWW.ALFALAVAL.COM



WARNING

READ INSTRUCTION MANUAL
BEFORE INSTALLATION,
OPERATION AND MAINTENANCE
TO AVOID INJURIES
OR DAMAGE.

