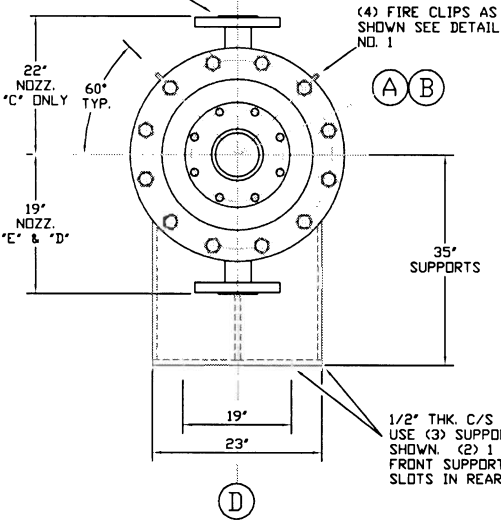
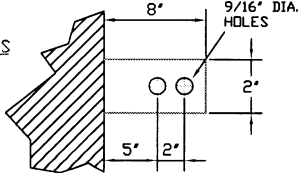
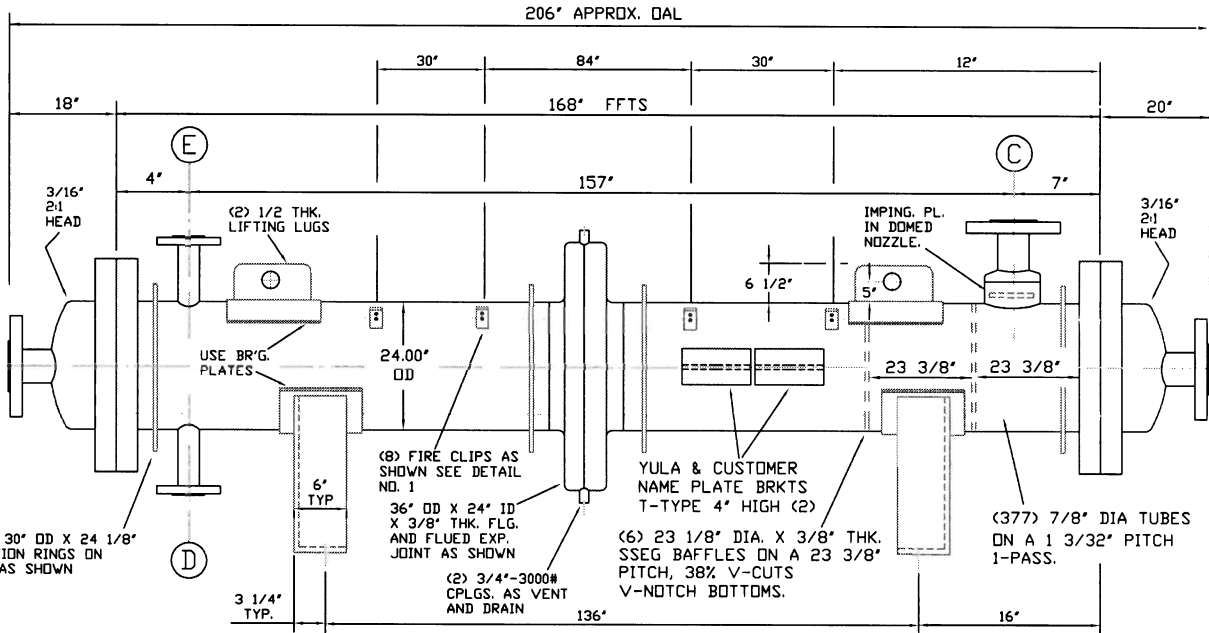


DETAIL NO. 1
FIRE PROTECTION CLIPS
3/8" C/S PLATE SA-36
(8) REQUIRED.

NOZZ. "C" IS WELDED TO A 6" SCHD. 40 WELD CAP, WHICH IS WELDED TO A 6" SCHD. 40 PIPE WITH A 4" DIA. IMPING. PL. IN IT.



1/2" THK. C/S CONSTRUCTION USE (3) SUPPORT GUSSETS AS SHOWN. (2) 1 1/8" DIA. HOLES FRONT SUPPORT & (2) 1" X 2 1/2" SLOTS IN REAR SUPPORT.



(4) 1/4" X 30" DD X 24 1/8" ID INSULATION RINGS ON 4-PLACES AS SHOWN

(8) FIRE CLIPS AS SHOWN SEE DETAIL NO. 1

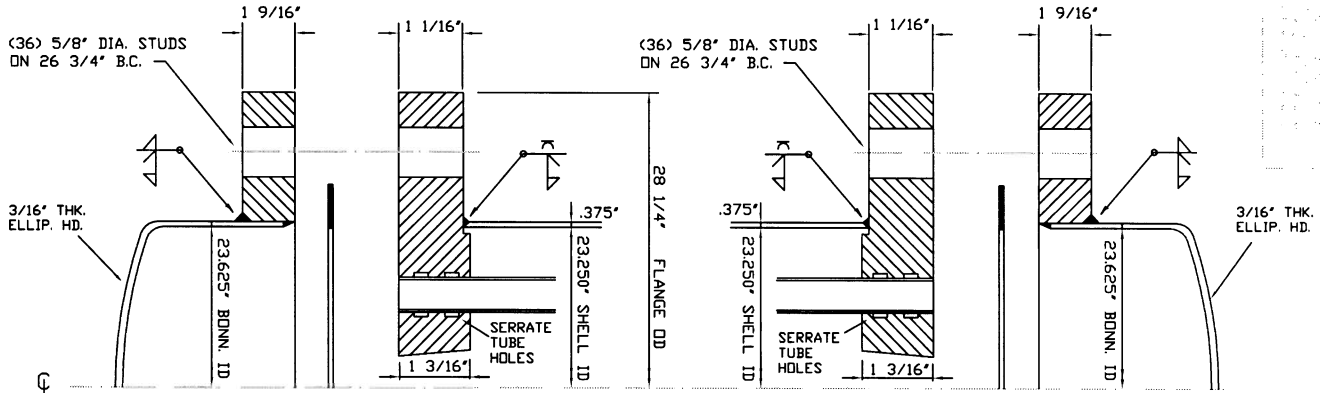
YULA & CUSTOMER NAME PLATE BRKTS T-TYPE 4" HIGH (2)

(377) 7/8" DIA TUBES ON A 1 3/32" PITCH 1-PASS.

CERTIFIED FOR: THERMAL KINETICS
CERTIFIED BY: JAB DATE: 03/13/2007
"AS BUILT DRAWING"

NO.	REVISION	DATE	BY
1	AS NOTED BY CUSTOMER		JAB
2	IMPING. PLATE IN DOME		JAB

TUBE	SHELL	NOZZLES w/(pipe, thk.)
A	ETHANOL IN (.188")	STEAM INLET (.237")
B	ETHANOL OUT (.188")	COND. OUTLET (.281")
C	14"-150# LAP JOINT	COND. INLET (.237")
D	14"-150# LAP JOINT	COND. OUTLET (.281")
E	PRV. (300")	COND. INLET (.237")
	3"-150# RFSD	COND. OUTLET (.281")



DESIGN DATA

DESIGN PRESS. (PSIG)	170	80
DESIGN TEMP. (°F)	-20/360	-20/350
TEST PRESS. PSI (GRED)	221	112
NO. OF PASSES	1	1
CORROSION ALLOW.	1/16"	0
TEMA C TYPE BEM	WPS-12 & WPS-6	
WELD PROCEDURE	WPS-12 & WPS-6	
ASME. SEC. VIII DIV 1	2004 A06	
CODE CONSTRUCTED & STAMPED	YES	
HEATING SURFACE	1190 SQ. FT.	

YULA RESPONSIBLE FOR MECHANICAL DESIGN

WEIGHTS

SHIPPING WEIGHT	APP 4275 LBS
FULL OF WATER	APP 6575 LBS

MATERIAL

COMPONENT	ASME. SPEC. NO.
SHELL CYLINDER	CS SA-53 GR B
SHELL NOZZ. NK.	CS SA-53 GR B
SHELL NOZZ. FLG.	CS SA-105
SHELL CLPGS.	CS SA-105
SHELL UNIT FLG.	CS SA-105
EXP. JOINT	CS SA-516 GR 70
IMPING. PLATE	CS SA-36
IMPING. DOME (21)	CS SA-234 W/PB
SUPPORTS	CS SA-36
BRG PLATES	CS SA-53 GR B
BAFFLES	CS SA-36
TIE RODS	CS SA-36
TUBESHEETS	SS SA-249 TP 304L W/D.
	SS SA-240 GR 304L
CHAN. CYLINDER	N/A
CHAN. NOZZ. NK.	SS SA-312 TP 304L
CHAN. NOZZ. STUB END	SS SA-403 W/P304L
CHAN. NOZZ. FLG.	CS SA-105
CHAN. UNIT FLG.	SS SA-240 TP 304L
CHAN. COVERS (21)	SS SA-240 GR 304L

GASKETS

FR. HD 1/16" THK. GARLOCK JFG-5500
RR. HD 1/16" THK. GARLOCK JFG-5500
BOTH 26" DD X 24 3/4" ID.

PAINT

CS: YULA BLUE SS: ABRASIVE BLASTED.

GENERAL NOTES

- 1) ALL FLANGE BOLT HOLES STRADDLE CENTERLINES.
- 2) NOZZLES ARE ADEQUATELY COVERED FOR SHIPPING COUPLINGS ARE COVERED
- 3) TUBESHEETS ARE DOUBLE SEPARATED PER TEMA.
- 4) ALL VELDS ARE FULL PENETRATION VELDS WITH NOZZ. FLUSH WITH ID. OF SHELL.
- 5) TUBESIDE HAS A STD. MILL FINISH.

(1) UNIT REQUIRED

YULA MODEL WC-11-168BBS
92% SUPERHEATER
TAG NO. ET-4114

THERMAL KINETICS SYSTEMS, LLC.
CANTON, IL.

P.O. NO. 7338-II (REV. 4)

Yula Corporation
330 Bryant Avenue,
Bronx, N.Y. 10474

JAB 08/14/2006 20977-3