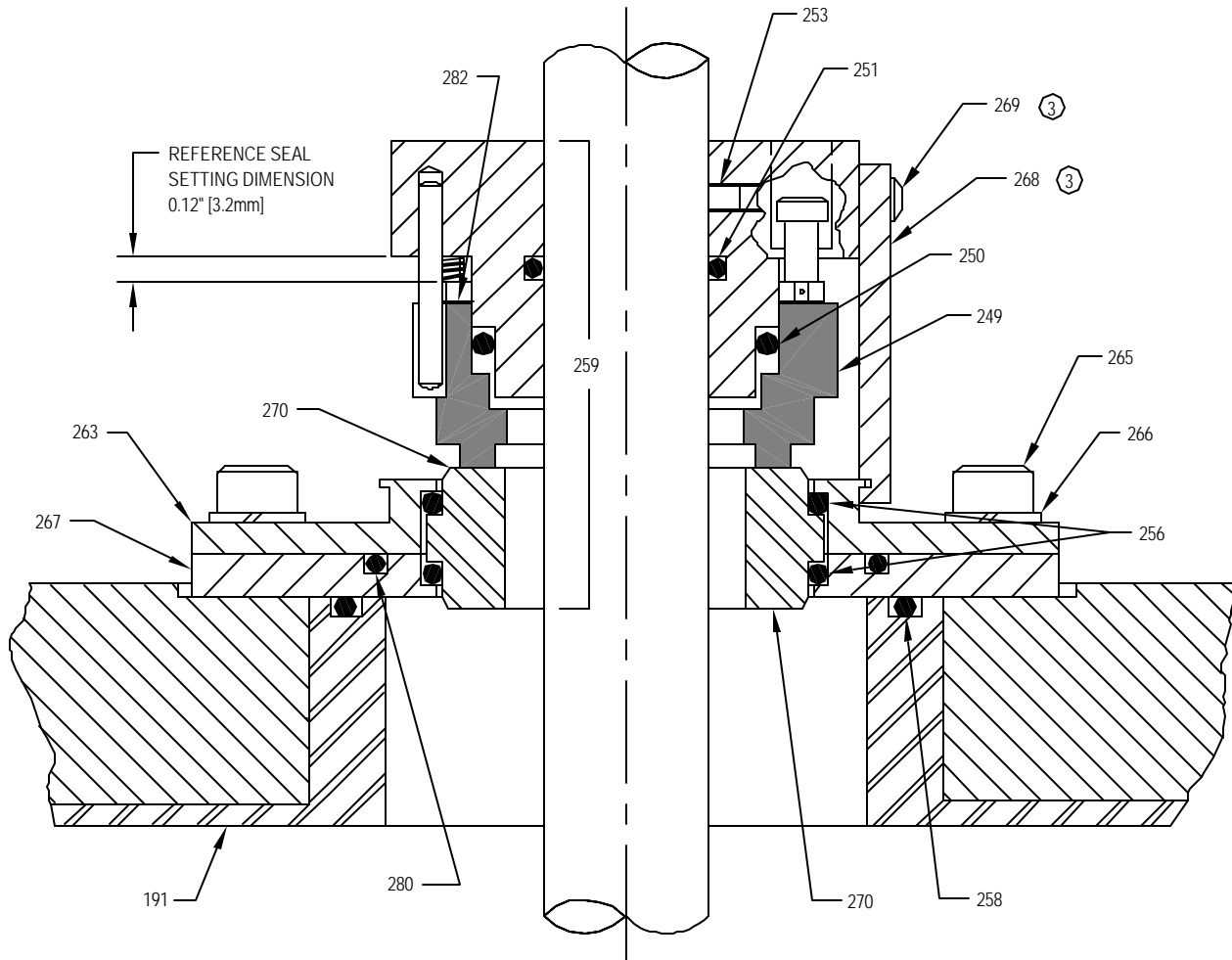


NOTES:

- ① THE "LIGHTNIN" SEAL ASSEMBLY (259) IS AVAILABLE AS AN ASSEMBLY ONLY. INTERNAL COMPONENTS ARE NOT AVAILABLE AS INDIVIDUAL ITEMS.
- ② STANDARD SEAL ASSEMBLY MATERIALS:  
METAL COMPONENTS - STAINLESS STEEL  
STATIONARY SEAL FACE - 316SS / DURCHROME  
ROTARY SEAL FACE - CARBON  
SEAL RINGS - VITON
- ③ REMOVE ITEMS 268 & 269 BEFORE OPERATING THE MIXER AND RETAIN FOR FUTURE USE. REFER TO SEAL MAINTENANCE INSTRUCTIONS.

SEAL SHAFT DIA.	MAX. TANK PRESSURE	MAX. TEMPERATURE	MAX. SHAFT SPEED (RPM)
1"	150 PSIG	300 ° F	350
1-1/4	125 PSIG		
1-1/2	100 PSIG		



© LIGHTNIN  
2001

WHEN ORDERING PARTS, SPECIFY:  
DRAWING NUMBER, PART NAME, ITEM NUMBER,  
AND UNIT MODEL & SERIAL NUMBER.

263	GLAND	282	GASKET
259	"LIGHTNIN" MECHANICAL SEAL ASSEMBLY	280	GLAND SEAL RING
258	SEALING RING	270	INSERT
256	STATIONARY SEAL RING	269	SEAL SETTING RETAINING SCREW
253	SET SCREW	268	SEAL SETTING TAB (SEE NOTE 3)
251	SHAFT SEAL RING	267	GLAND PLATE
250	ROTARY SEAL RING	266	LOCKWASHER
249	ROTARY SEALING FACE	265	SOCKET HEAD CAP SCREW
191	FLANGE		
ITEM	PART NAME	ITEM	PART NAME

ALL EQUIPMENT DESIGN AND APPLICATION DATA SHOWN HEREIN  
AND RELATED KNOW-HOW IS CONFIDENTIAL AND THE PROPERTY  
OF THE LIGHTNIN GROUP OF COMPANIES.  
NO USE OR DISCLOSURE THEREOF MAY BE MADE WITHOUT  
OUR WRITTEN PERMISSION.

**LIGHTNIN**®

MIXERS AND AERATORS  
ASSEMBLY DRAWING

**D11 SINGLE  
MECHANICAL SEAL**

DRAWING NO. L-16998D