

**IMPORTANT NOTE**

IF POSSIBLE, REVIEW THIS DRAWING WITH YOUR CONTRACTOR. OF SPECIFIC IMPORTANCE, DOES THE TANK HAVE THE NECESSARY FITTINGS FOR THE EQUIPMENT YOU PLAN TO INSTALL

**CUSTOMER APPROVAL REQUIRED**

MAKE NOTED CHANGES AND RE-SUBMIT  
 APPROVED WITH CHANGES NOTED  
 APPROVED AS DRAWN

SIGNATURE \_\_\_\_\_ DATE \_\_\_\_\_



FOR  
ATHENS BIO-DIESEL  
ATHENS, AL

DRAWN BY  
D. HIGDON

CHECKED BY

CUSTOMER ORDER NO.

QUANTITY

DATE  
11-7-2007

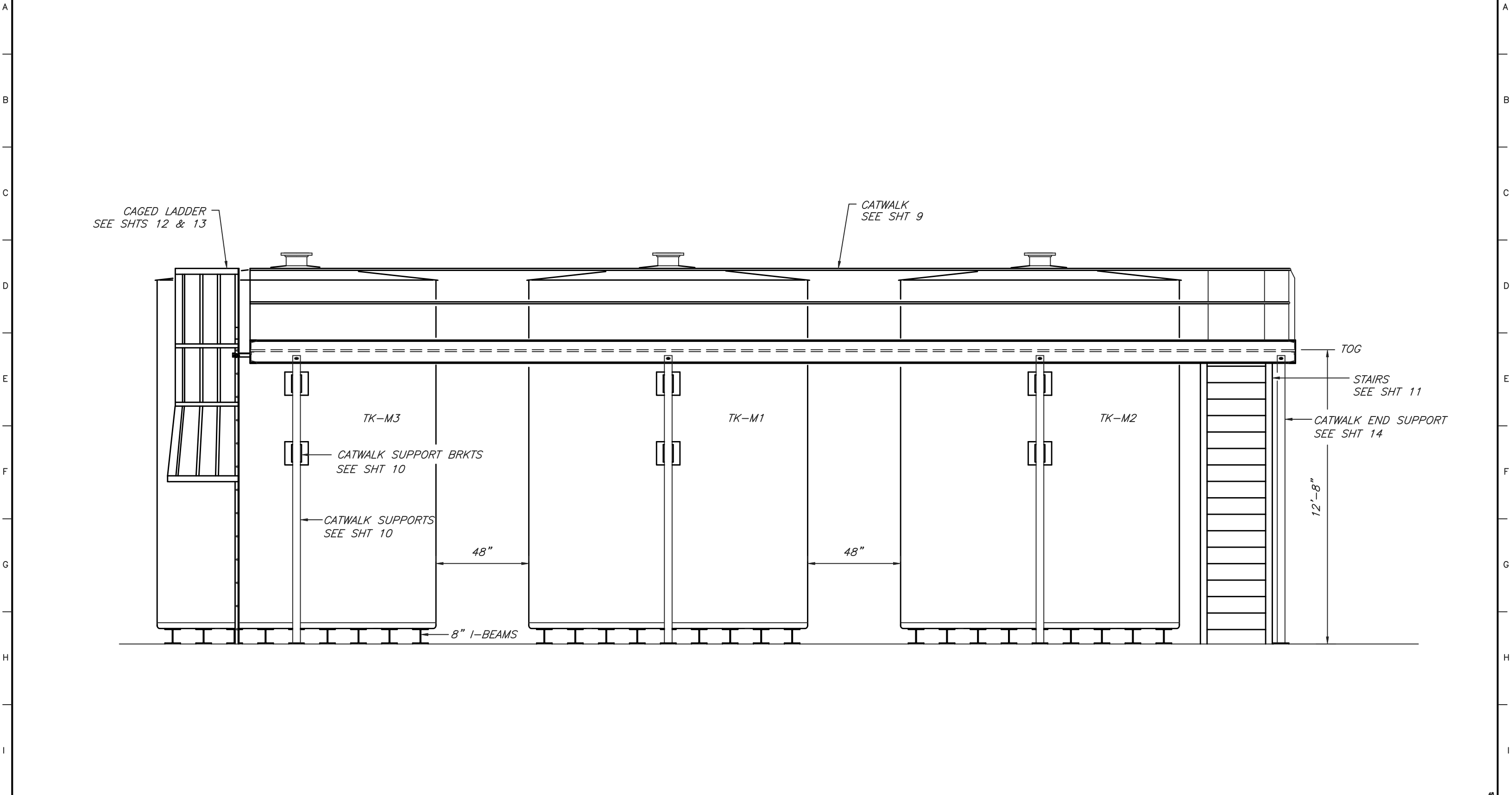
DRAWING DESCRIPTION  
GENERAL ARRANGEMENT  
PLAN VIEW-METHANOL TANKS

DRAWING FILE  
17132B\_1

SHEET  
1 OF 14

REVISION

1 2 3 4 5 6 7 8 9 10 11 12 13 14 15 16



**IMPORTANT NOTE**

IF POSSIBLE, REVIEW THIS DRAWING WITH YOUR CONTRACTOR. OF SPECIFIC IMPORTANCE, DOES THE TANK HAVE THE NECESSARY FITTINGS FOR THE EQUIPMENT YOU PLAN TO INSTALL

**CUSTOMER APPROVAL REQUIRED**

- MAKE NOTED CHANGES AND RE-SUBMIT
- APPROVED WITH CHANGES NOTED
- APPROVED AS DRAWN

SIGNATURE \_\_\_\_\_ DATE \_\_\_\_\_



**SOUTHERN**  
Tank & Mfg Co  
800-876-2321

FOR

ATHENS BIO-DIESEL  
ATHENS, AL

DRAWN BY  
D. HIGDON

CHECKED BY

CUSTOMER ORDER NO.

QUANTITY

DATE  
11-16-07

DRAWING DESCRIPTION

GENERAL ARRANGEMENT  
ELEVATION TK-M SERIES TANKS

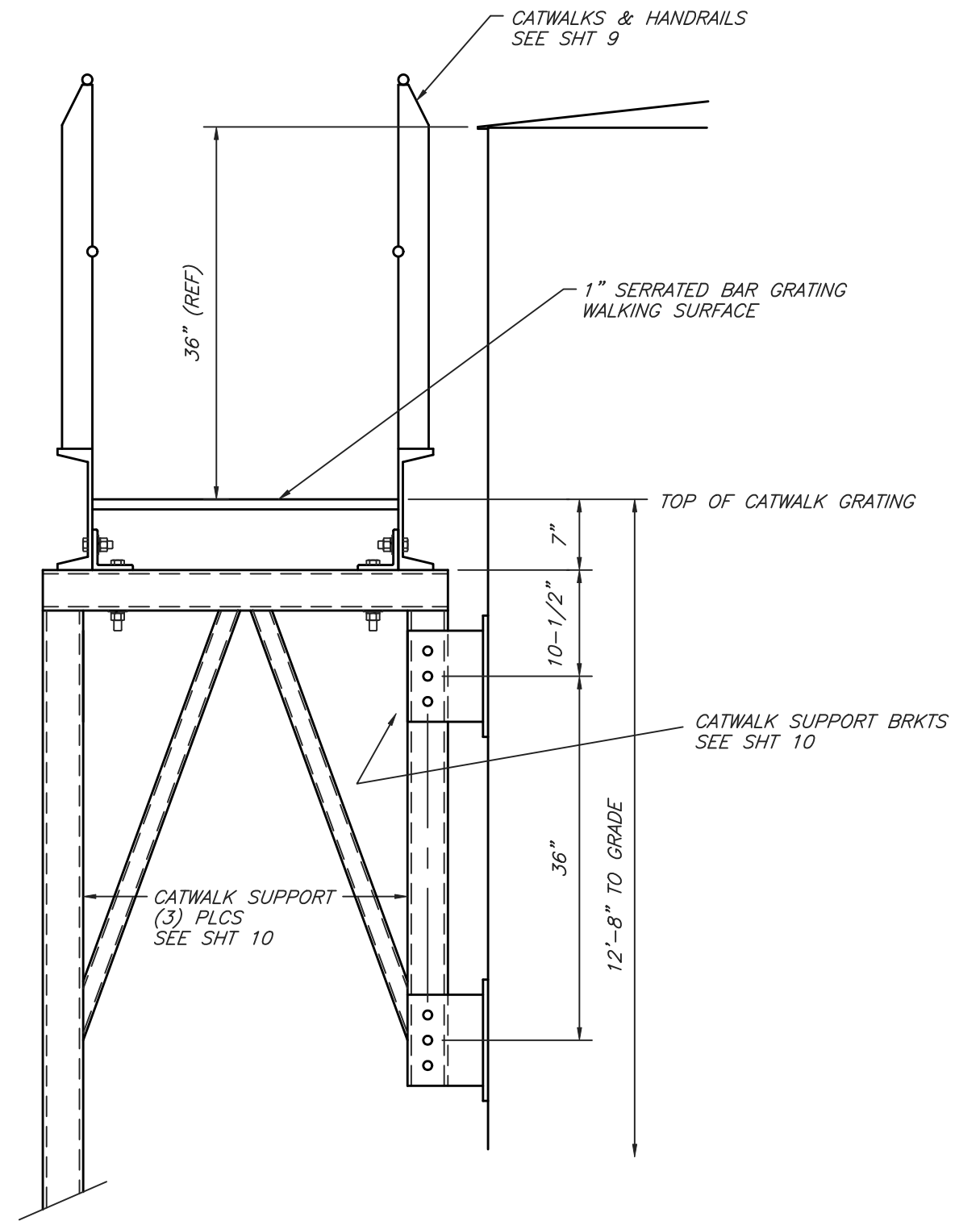
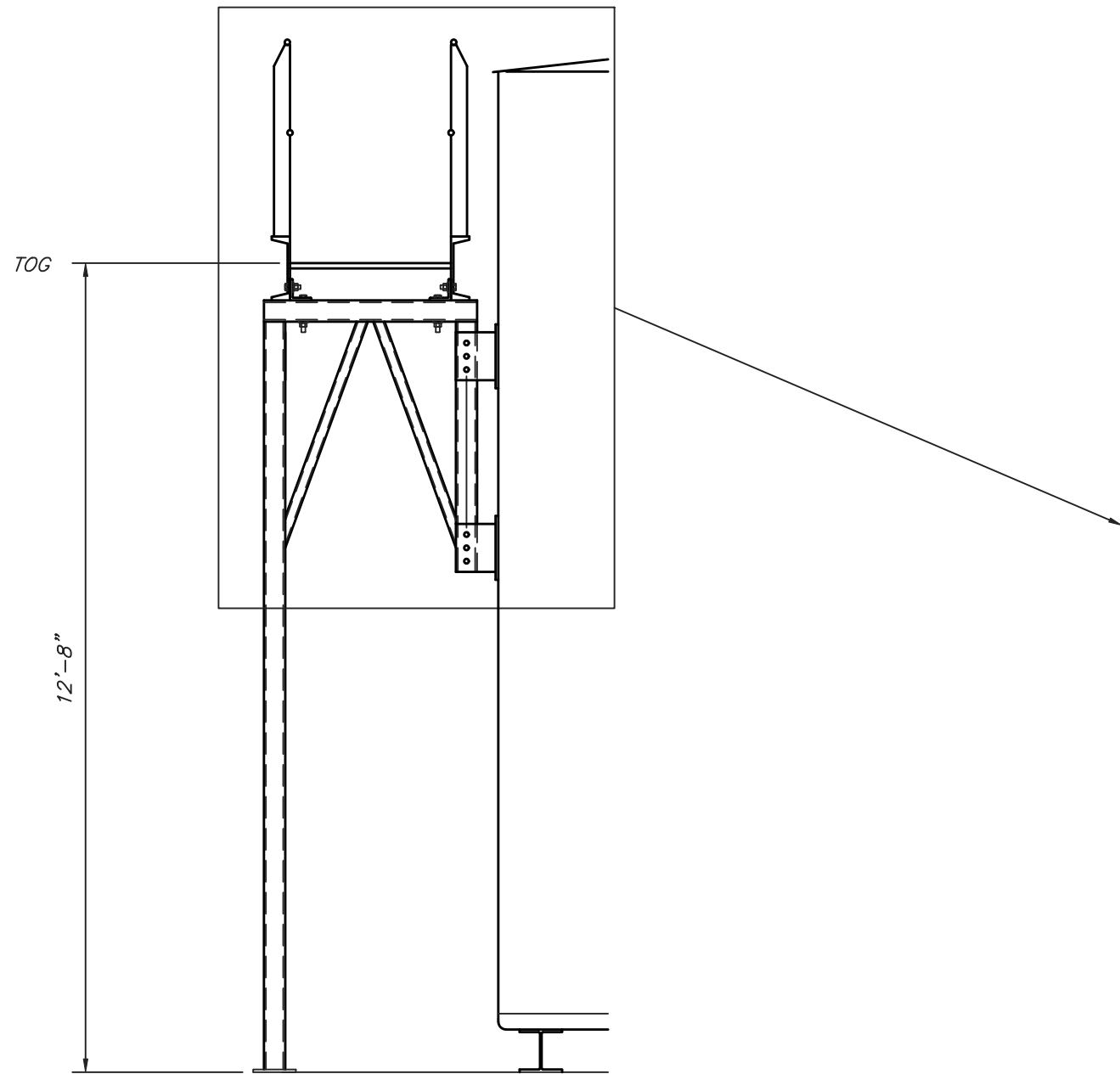
DRAWING FILE  
17132B\_2

SHEET  
2 OF 14

REVISION



1 2 3 4 5 6 7 8 9 10 11 12 13 14 15 16



**IMPORTANT NOTE**

IF POSSIBLE, REVIEW THIS DRAWING WITH YOUR CONTRACTOR. OF SPECIFIC IMPORTANCE, DOES THE TANK HAVE THE NECESSARY FITTINGS FOR THE EQUIPMENT YOU PLAN TO INSTALL

**CUSTOMER APPROVAL REQUIRED**

- MAKE NOTED CHANGES AND RE-SUBMIT
- APPROVED WITH CHANGES NOTED
- APPROVED AS DRAWN

SIGNATURE \_\_\_\_\_ DATE \_\_\_\_\_



**SOUTHERN**  
Tank & Mfg Co  
800-876-2321

FOR

ATHENS BIO-DIESEL  
ATHENS, AL

DRAWN BY  
D. HIGDON

CHECKED BY

CUSTOMER ORDER NO.

QUANTITY

DATE  
11-12-07

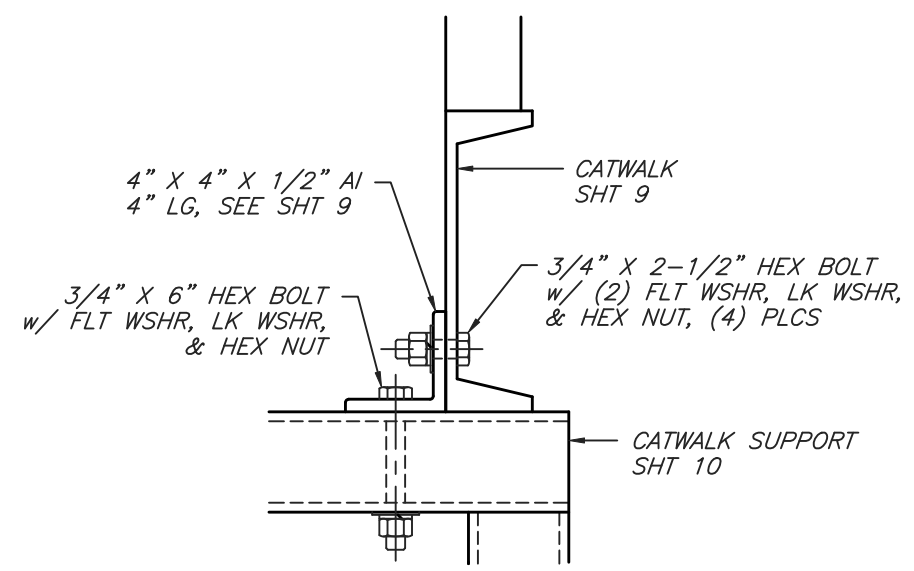
DRAWING DESCRIPTION

GENERAL ARRANGEMENT  
TYPICAL SECTION AT CATWALK SUPPORT

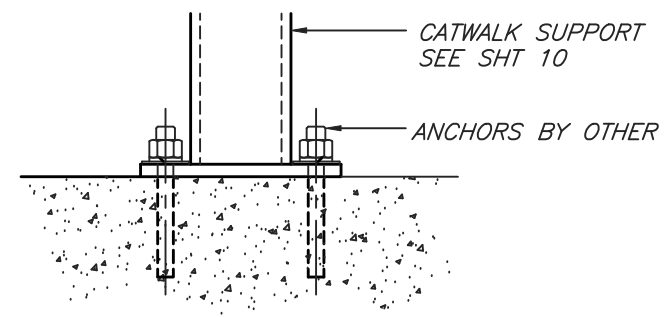
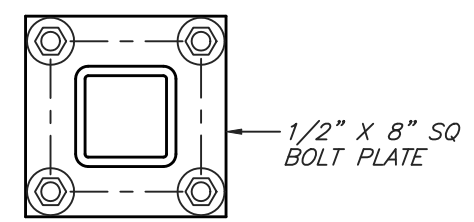
DRAWING FILE  
17132B\_3

SHEET  
3 OF 14

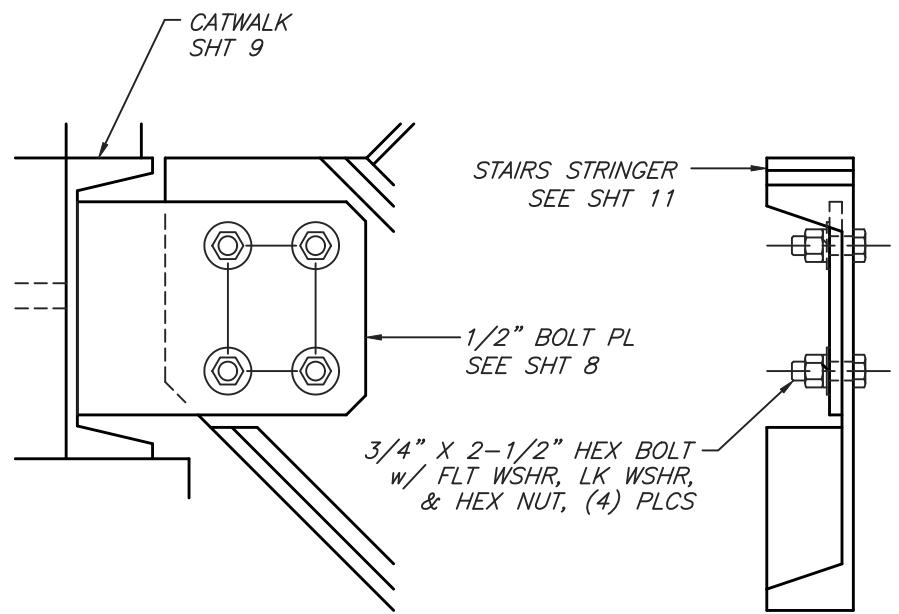
REVISION



CATWALK TO CATWALK SUPPORT

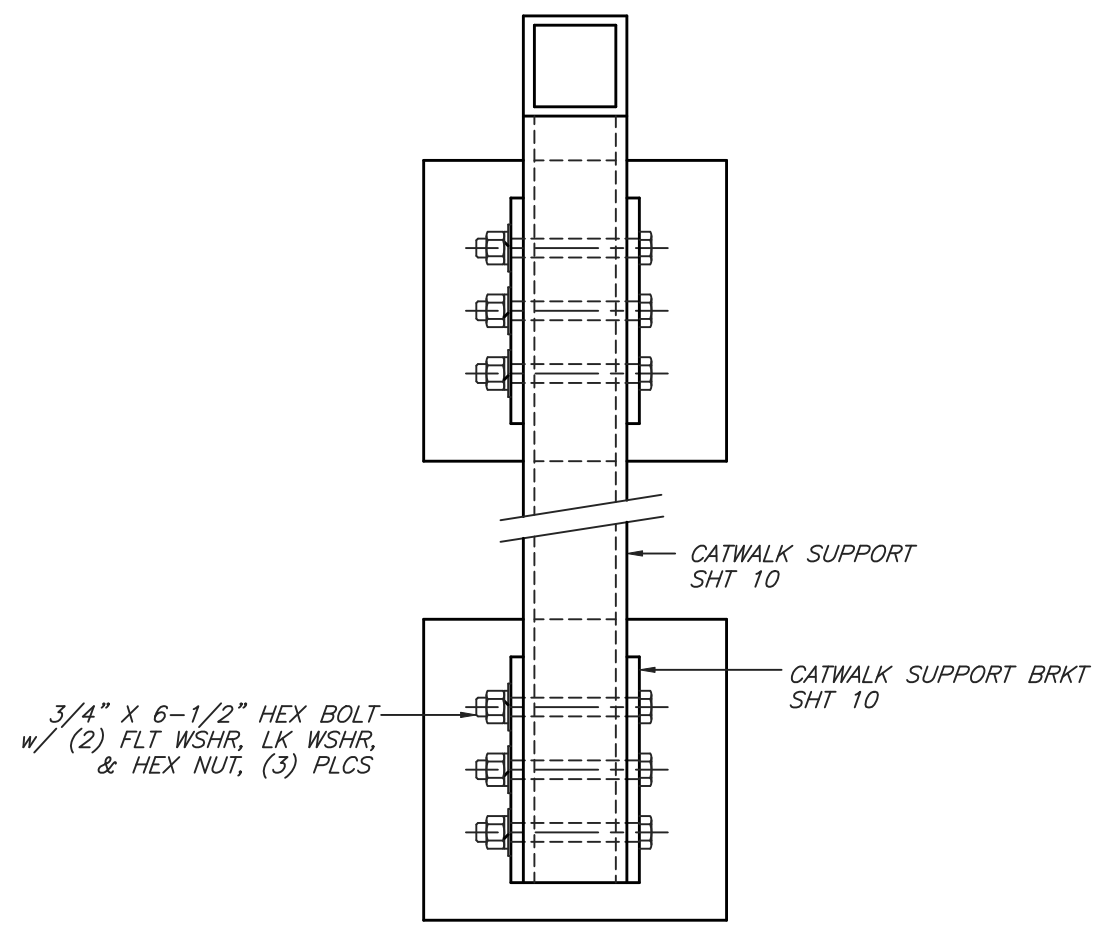


CATWALK SUPPORT TO SLAB

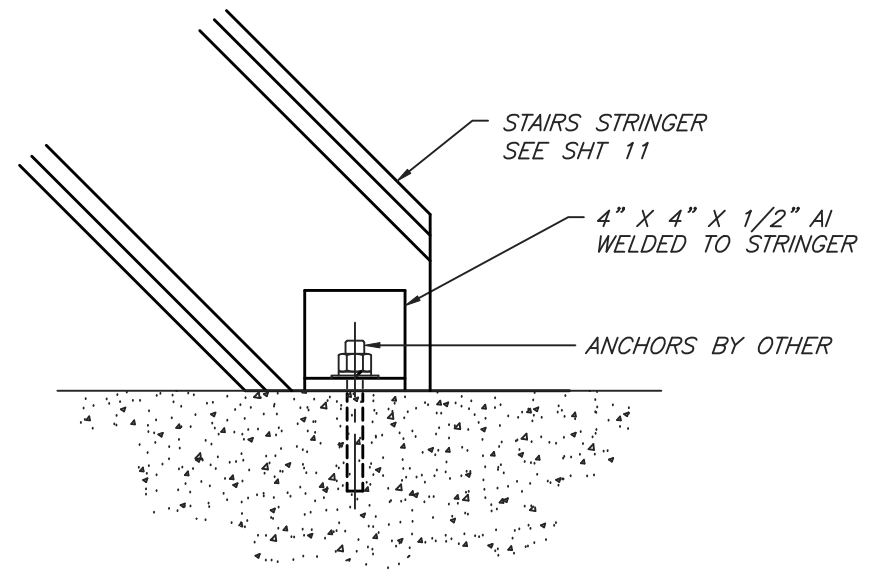


STAIRS TO CATWALK

DETAIL IS TYPICAL AT BOTH SIDES OF STAIRS



CATWALK SUPPORTS TO TANK



STAIRS TO SLAB

DETAIL IS TYPICAL AT BOTH SIDES OF STAIRS

**IMPORTANT NOTE**

IF POSSIBLE, REVIEW THIS DRAWING WITH YOUR CONTRACTOR. OF SPECIFIC IMPORTANCE, DOES THE TANK HAVE THE NECESSARY FITTINGS FOR THE EQUIPMENT YOU PLAN TO INSTALL

**CUSTOMER APPROVAL REQUIRED**

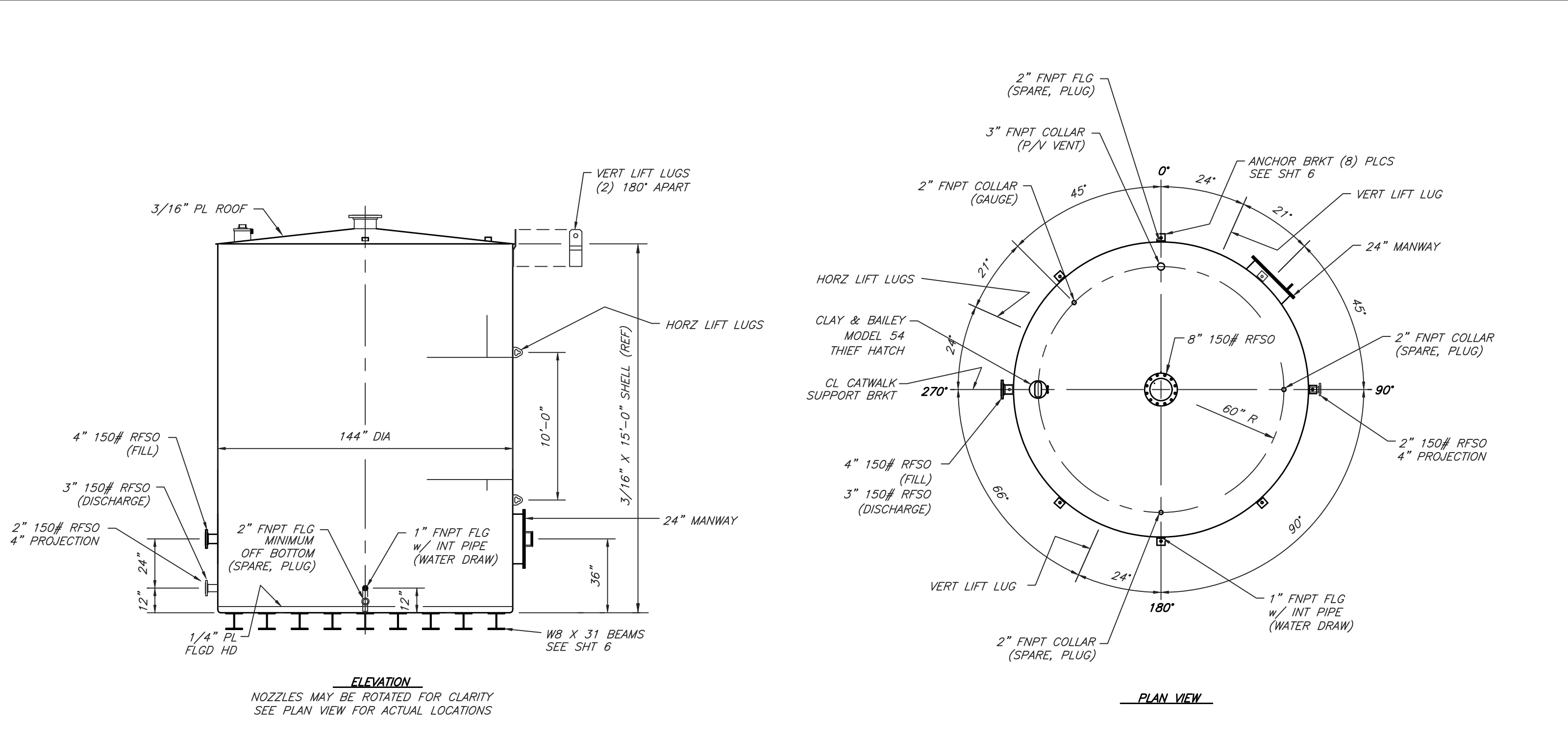
- MAKE NOTED CHANGES AND RE-SUBMIT
  - APPROVED WITH CHANGES NOTED
  - APPROVED AS DRAWN
- SIGNATURE \_\_\_\_\_ DATE \_\_\_\_\_



FOR ATHENS BIO-DIESEL ATHENS, AL	
DRAWN BY D. HIGDON	CHECKED BY

CUSTOMER ORDER NO.	DATE 11-12-07
QUANTITY	

DRAWING DESCRIPTION GENERAL ARRANGEMENT MISCELLANEOUS ASSEMBLY DETAILS		
DRAWING FILE 17132B_4	SHEET 4 OF 14	REVISION 0

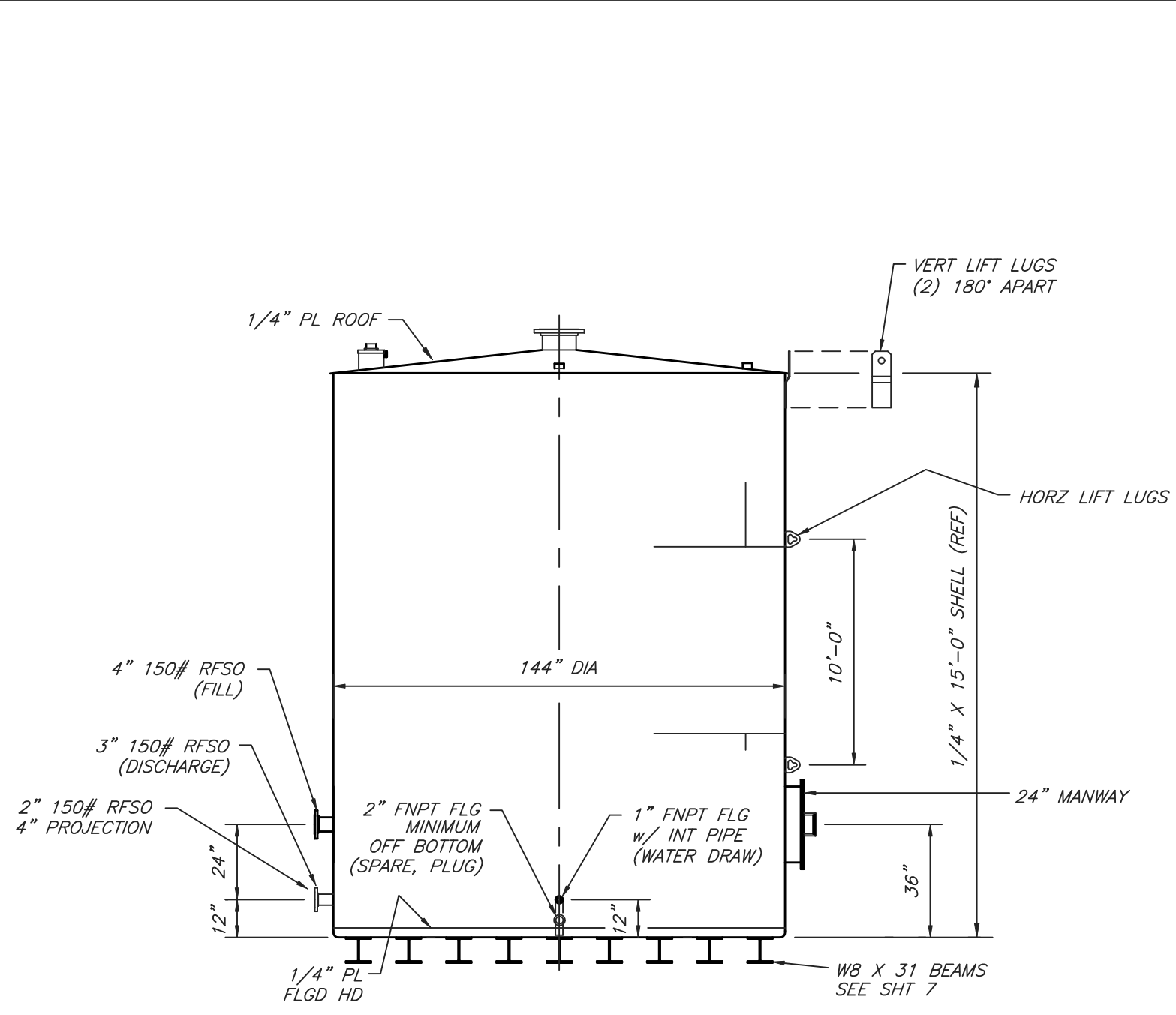


**ELEVATION**  
NOZZLES MAY BE ROTATED FOR CLARITY  
SEE PLAN VIEW FOR ACTUAL LOCATIONS

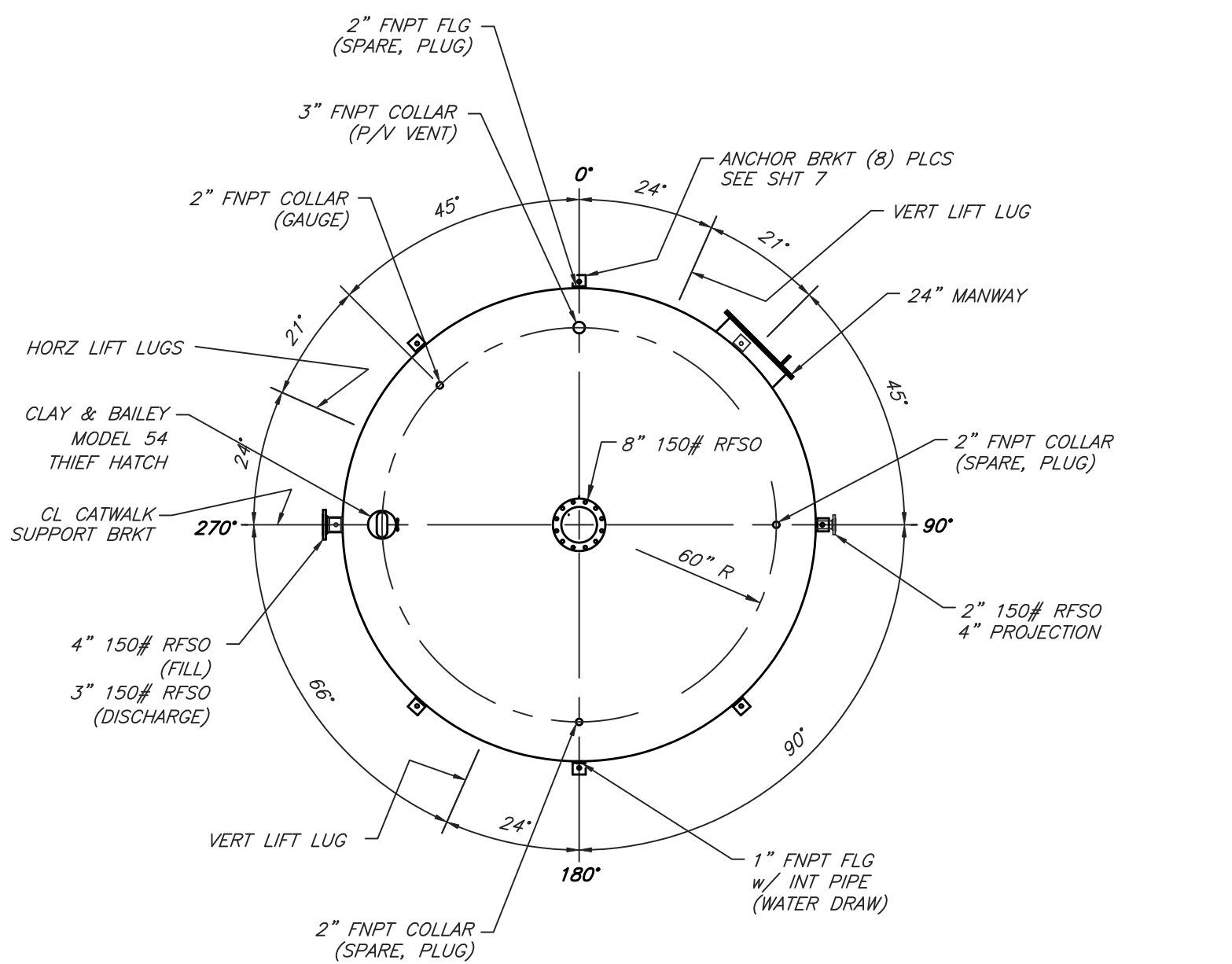
**PLAN VIEW**

- NOTES**
- TANK BUILT IN ACCORDANCE OF UL 142 STANDARDS AND LABELED AS SUCH.
  - ALL MATERIAL IS CARBON STEEL, 1/4" PLATE, HR A36 FLOOR, 3/16" SHELL AND ROOF.
  - TANK EXTERIOR SHELL AND ROOF TO RECEIVE SSPC-SP6 BLAST, THEN (1) COAT OF CARBOLINE CARBOZINC 11 PRIMER. TANK EXTERIOR BOTTOM TO BE COATED WITH BLACK ASPHALT OVER A MILL SURFACE.
  - ESTIMATED WEIGHT: 11,300 LBS.

<p><b>IMPORTANT NOTE</b></p> <p>IF POSSIBLE, REVIEW THIS DRAWING WITH YOUR CONTRACTOR. OF SPECIFIC IMPORTANCE, DOES THE TANK HAVE THE NECESSARY FITTINGS FOR THE EQUIPMENT YOU PLAN TO INSTALL</p>	<p><b>CUSTOMER APPROVAL REQUIRED</b></p> <p><input type="checkbox"/> MAKE NOTED CHANGES AND RE-SUBMIT</p> <p><input type="checkbox"/> APPROVED WITH CHANGES NOTED</p> <p><input type="checkbox"/> APPROVED AS DRAWN</p> <p>SIGNATURE _____ DATE _____</p>	<p><b>SOUTHERN</b> Tank &amp; Mfg Co 800-876-2321</p>	FOR	CUSTOMER ORDER NO.	DRAWING DESCRIPTION			
			<p>ATHENS BIO-DIESEL ATHENS, AL</p>	<p>TWO</p>	<p>GENERAL ARRANGEMENT-12,690 GALLON TANK TK-M1 AND TK-M2 TANKS</p>			
			DRAWN BY	CHECKED BY	DATE	DRAWING FILE	SHEET	REVISION
			D. HIGDON		11-12-07	17132B_5	5 OF 14	



NOZZLES MAY BE ROTATED FOR CLARITY  
SEE PLAN VIEW FOR ACTUAL LOCATIONS



- NOTES**
- TANK BUILT IN ACCORDANCE OF UL 142 STANDARDS AND LABELED AS SUCH.
  - ALL MATERIAL IS CARBON STEEL, 1/4" PLATE, HR A36 FLOOR, SHELL AND ROOF.
  - TANK EXTERIOR SHELL AND ROOF TO RECEIVE SSPC-SP6 BLAST, THEN (1) COAT OF CARBOLINE CARBOZINC 11 PRIMER. TANK EXTERIOR BOTTOM TO BE COATED WITH BLACK ASPHALT OVER A MILL SURFACE.
  - ESTIMATED WEIGHT: 12,500 LBS.

**IMPORTANT NOTE**

IF POSSIBLE, REVIEW THIS DRAWING WITH YOUR CONTRACTOR. OF SPECIFIC IMPORTANCE, DOES THE TANK HAVE THE NECESSARY FITTINGS FOR THE EQUIPMENT YOU PLAN TO INSTALL

**CUSTOMER APPROVAL REQUIRED**

MAKE NOTED CHANGES AND RE-SUBMIT

APPROVED WITH CHANGES NOTED

APPROVED AS DRAWN

SIGNATURE \_\_\_\_\_ DATE \_\_\_\_\_



FOR  
ATHENS BIO-DIESEL  
ATHENS, AL

DRAWN BY  
D. HIGDON

CHECKED BY

CUSTOMER ORDER NO.

QUANTITY  
ONE

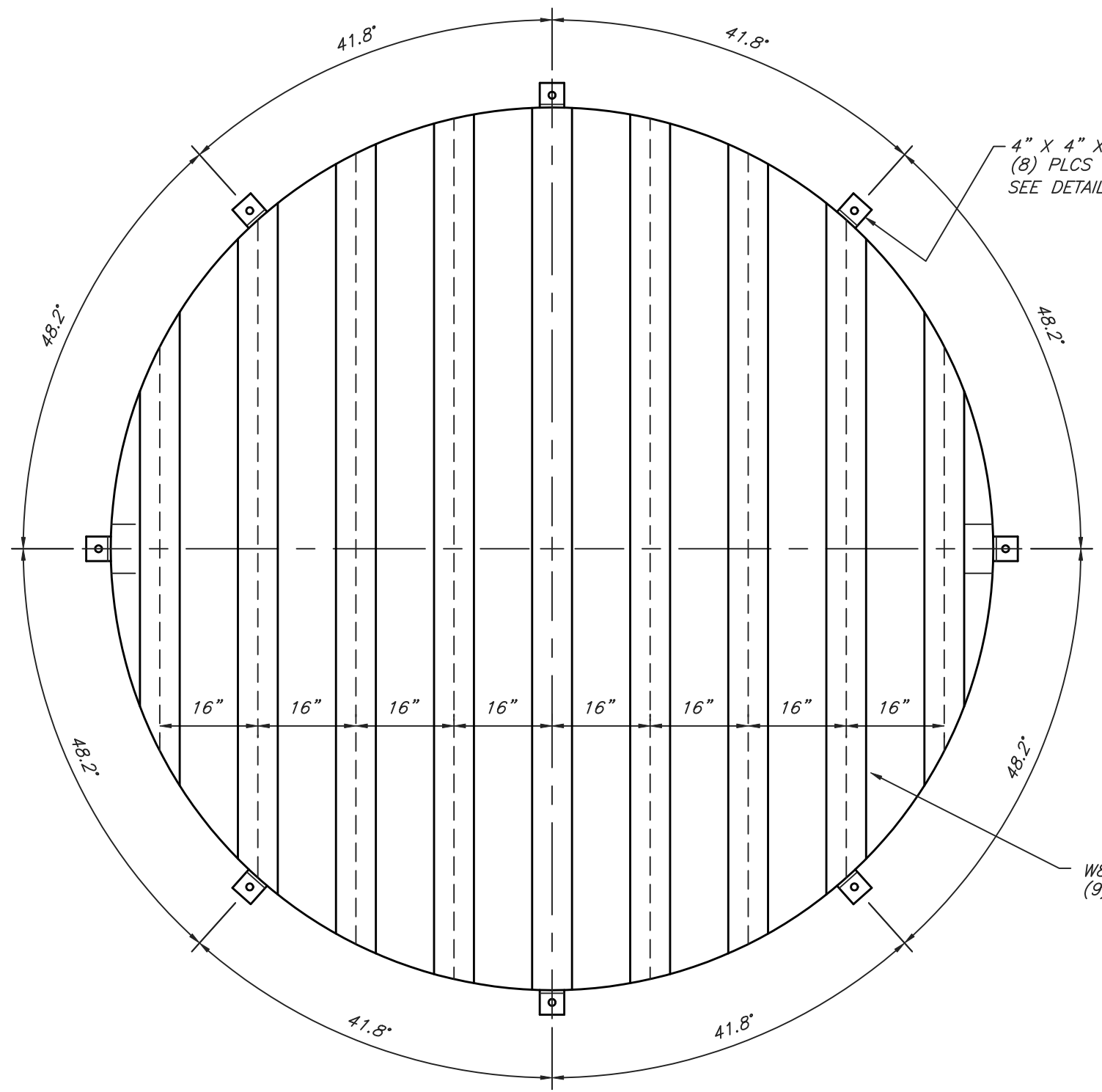
DATE  
11-12-07

DRAWING DESCRIPTION  
GENERAL ARRANGEMENT-12,690 GALLON TANK  
TK-M3 TANK

DRAWING FILE  
17132B\_6

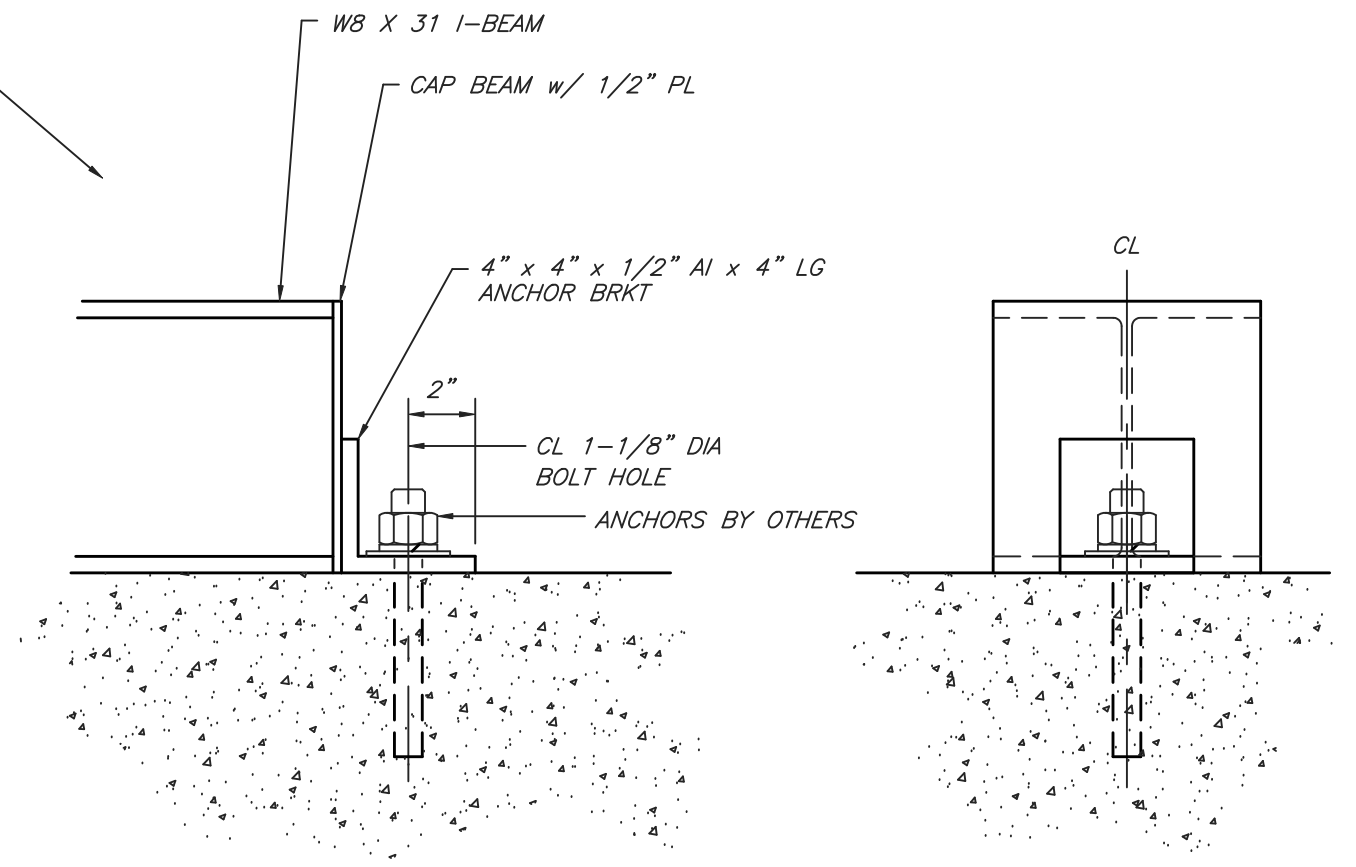
SHEET  
6 OF 14

REVISION



4" X 4" X 1/2" AI  
(8) PLCS  
SEE DETAIL

W8 X 31 BEAM  
(9) PLCS 16" C/C



NOTES  
1. I-BEAM LAYOUT IS PER TECHNICAL BULLETIN N° UL17150-06-1.

**IMPORTANT NOTE**

IF POSSIBLE, REVIEW THIS DRAWING WITH YOUR CONTRACTOR. OF SPECIFIC IMPORTANCE, DOES THE TANK HAVE THE NECESSARY FITTINGS FOR THE EQUIPMENT YOU PLAN TO INSTALL

**CUSTOMER APPROVAL REQUIRED**

- MAKE NOTED CHANGES AND RE-SUBMIT
- APPROVED WITH CHANGES NOTED
- APPROVED AS DRAWN

SIGNATURE \_\_\_\_\_ DATE \_\_\_\_\_



FOR  
ATHENS BIO-DIESEL  
ATHENS, AL

DRAWN BY  
D. HIGDON

CHECKED BY

DATE  
11-12-07

CUSTOMER ORDER NO.

QUANTITY

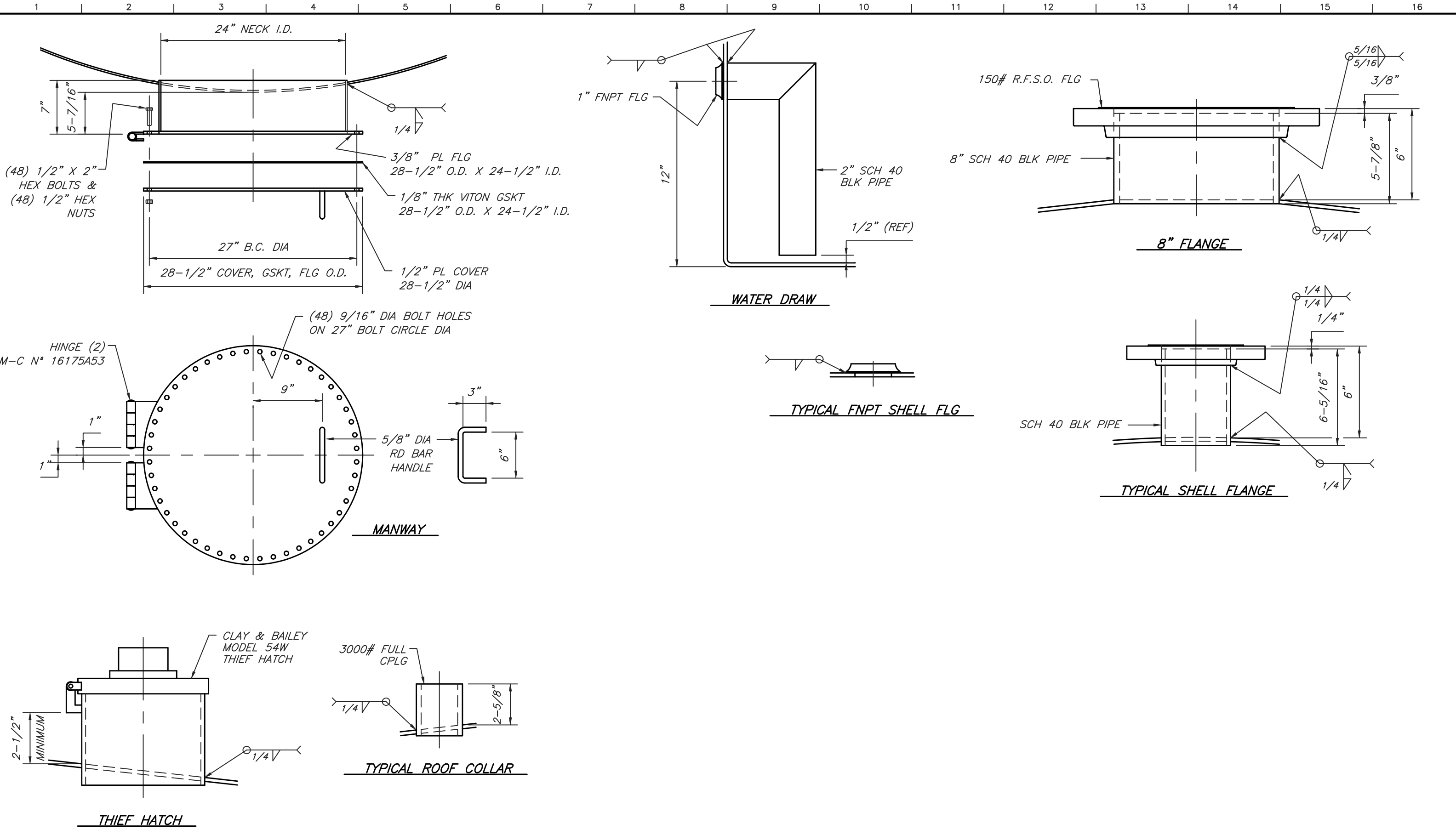
TANKPART

DRAWING DESCRIPTION  
GENERAL ARRANGEMENT  
I-BEAM LAYOUT

DRAWING FILE  
17132B\_7

SHEET  
7 OF 14

REVISION



**IMPORTANT NOTE**

IF POSSIBLE, REVIEW THIS DRAWING WITH YOUR CONTRACTOR. OF SPECIFIC IMPORTANCE, DOES THE TANK HAVE THE NECESSARY FITTINGS FOR THE EQUIPMENT YOU PLAN TO INSTALL

**CUSTOMER APPROVAL REQUIRED**

- MAKE NOTED CHANGES AND RE-SUBMIT
- APPROVED WITH CHANGES NOTED
- APPROVED AS DRAWN

SIGNATURE \_\_\_\_\_ DATE \_\_\_\_\_



FOR  
ATHENS BIO-DIESEL  
ATHENS, AL

DRAWN BY  
D. HIGDON

CHECKED BY

DATE  
11-12-07

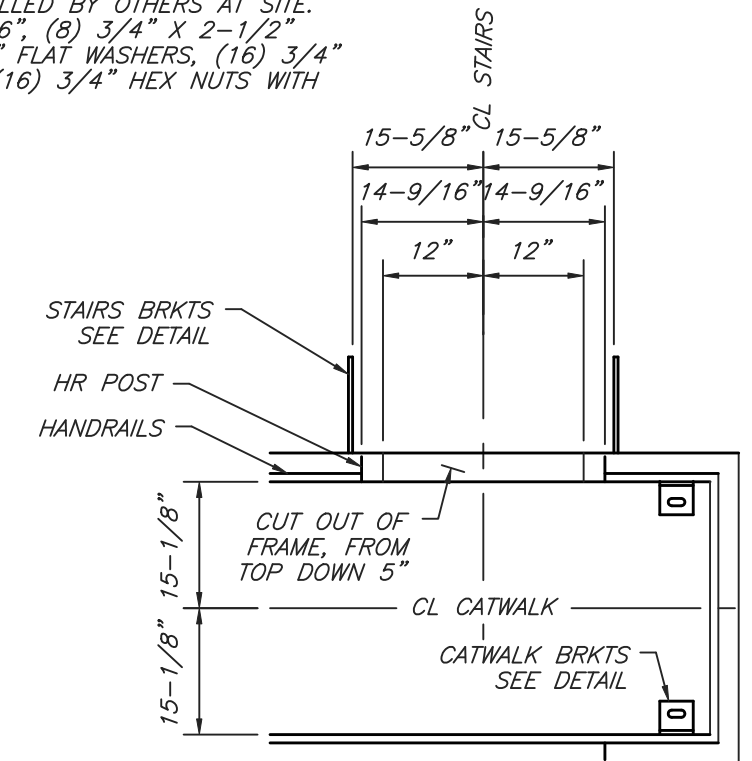
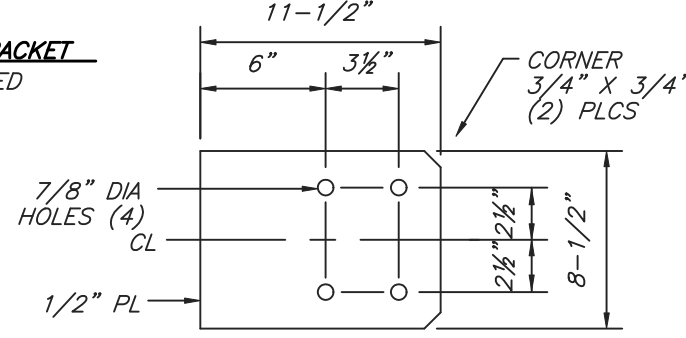
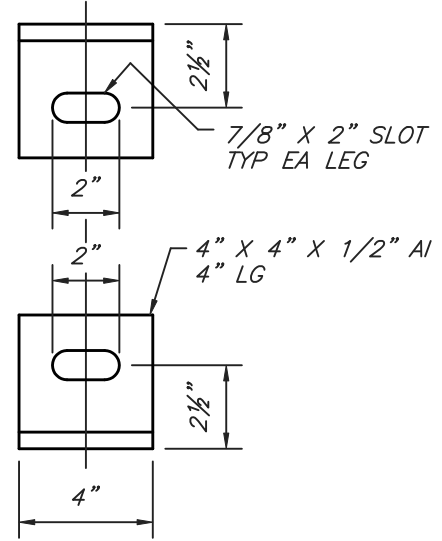
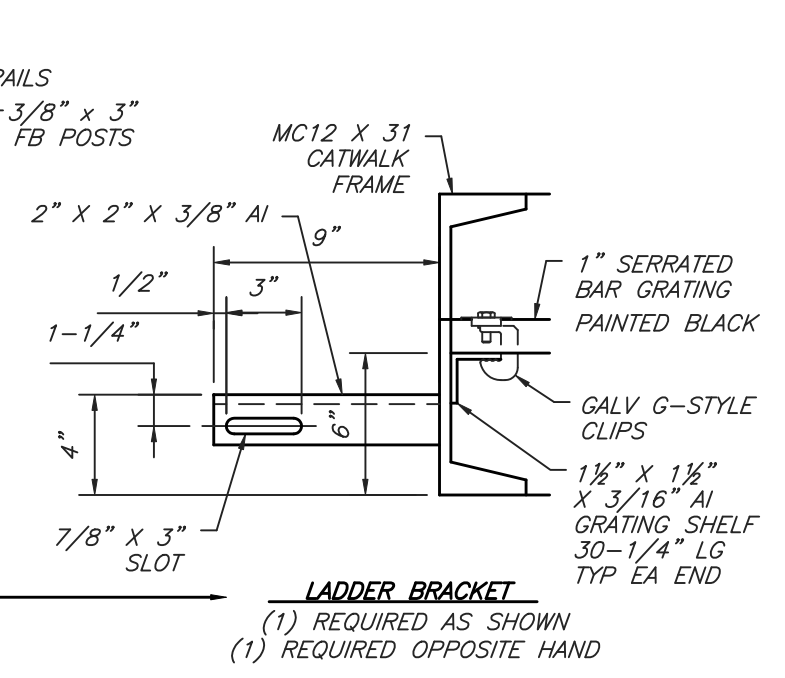
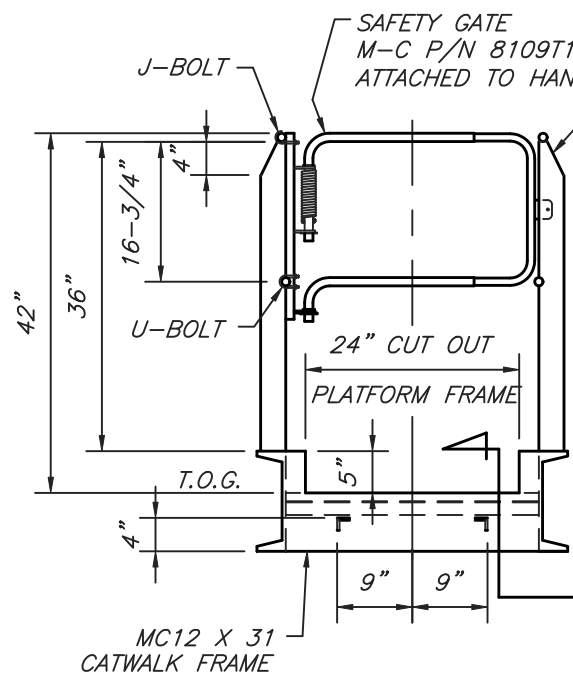
CUSTOMER ORDER NO.

QUANTITY

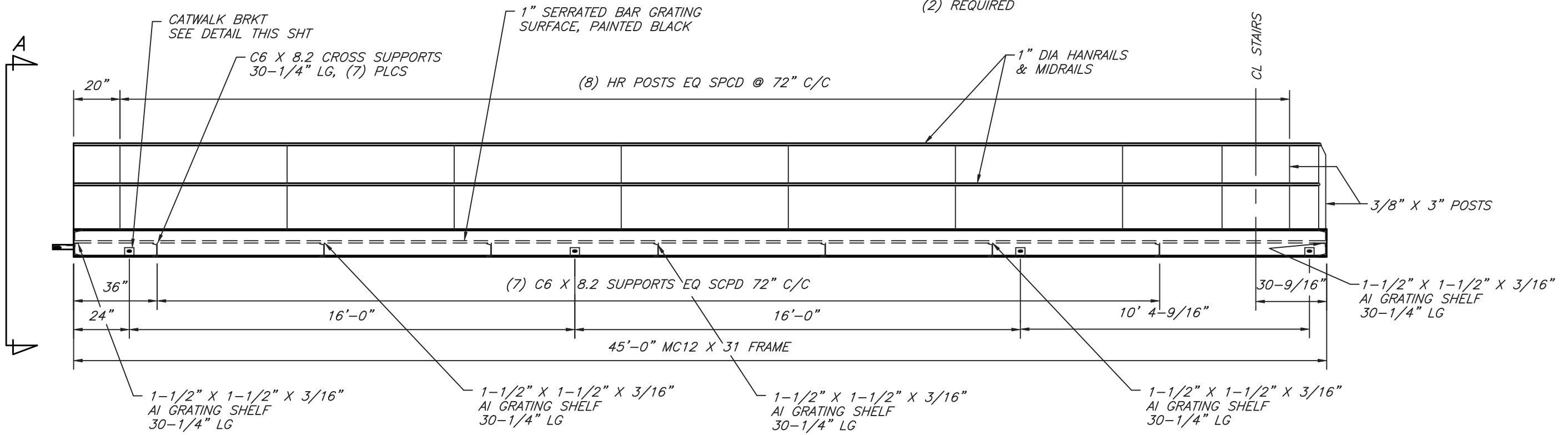
TANKPART

DRAWING DESCRIPTION		
GENERAL ARRANGEMENT MANWAY, NOZZLE DETAILS		
DRAWING FILE 17132B_8	SHEET 8 OF 14	REVISION 0





- NOTES**
1. ALL MATERIAL IS CARBON STEEL.
  2. REMOVE ALL BURRS AND SHARP EDGES.
  3. CATWALK TO RECEIVE SSPC-SP6 SANDBLAST, THEN COATED WITH CHEMLINE CHEMTHANE 3107 SAFETY YELLOW ACRYLIC POLYURETHANE.
  4. CATWALK TO BE INSTALLED BY OTHERS AT SITE.
  5. INCLUDE (8) 3/4" X 6"; (8) 3/4" X 2-1/2" HEX BOLTS, (32) 3/4" FLAT WASHERS, (16) 3/4" LOCK WASHERS, AND (16) 3/4" HEX NUTS WITH CATWALK.



**IMPORTANT NOTE**

IF POSSIBLE, REVIEW THIS DRAWING WITH YOUR CONTRACTOR. OF SPECIFIC IMPORTANCE, DOES THE TANK HAVE THE NECESSARY FITTINGS FOR THE EQUIPMENT YOU PLAN TO INSTALL

**CUSTOMER APPROVAL REQUIRED**

MAKE NOTED CHANGES AND RE-SUBMIT  
 APPROVED WITH CHANGES NOTED  
 APPROVED AS DRAWN

SIGNATURE \_\_\_\_\_ DATE \_\_\_\_\_



FOR  
ATHENS BIO-DIESEL  
ATHENS, AL

DRAWN BY  
D. HIGDON

CHECKED BY

CUSTOMER ORDER NO.  
QUANTITY  
ONE

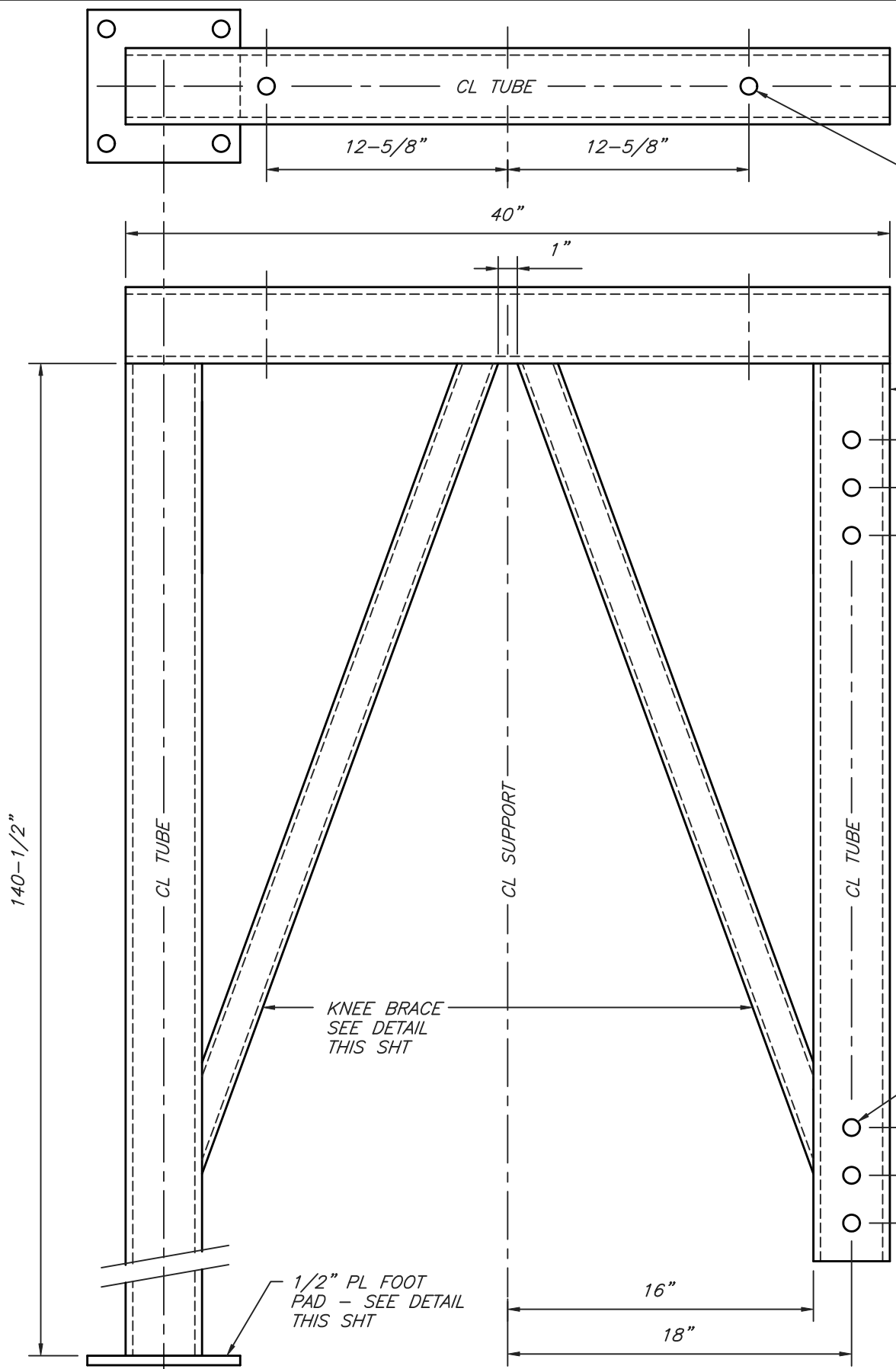
DATE  
11-16-07

DRAWING DESCRIPTION  
GENERAL ARRANGEMENT  
CATWALK

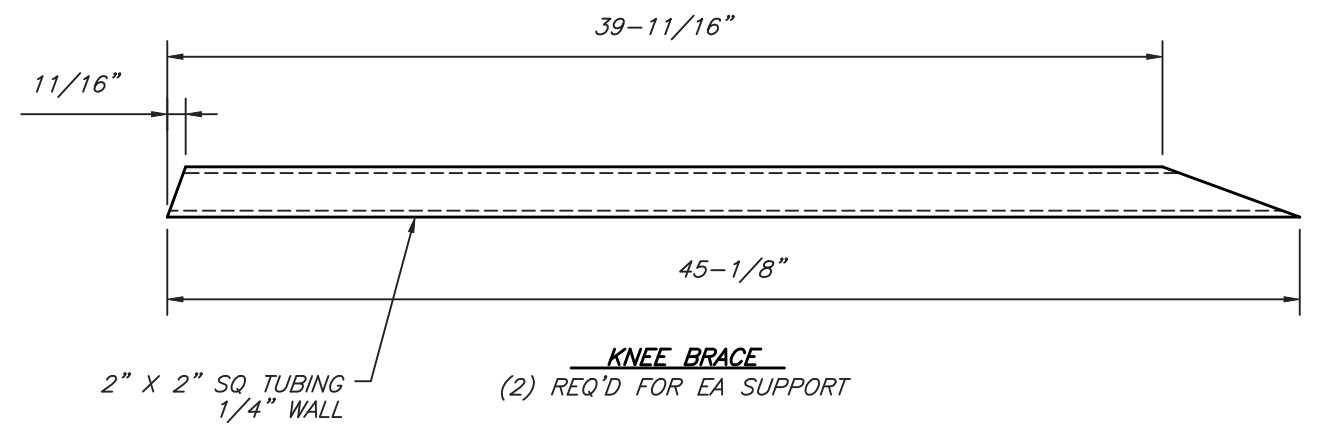
DRAWING FILE  
17132B\_9

SHEET  
9 OF 14

REVISION

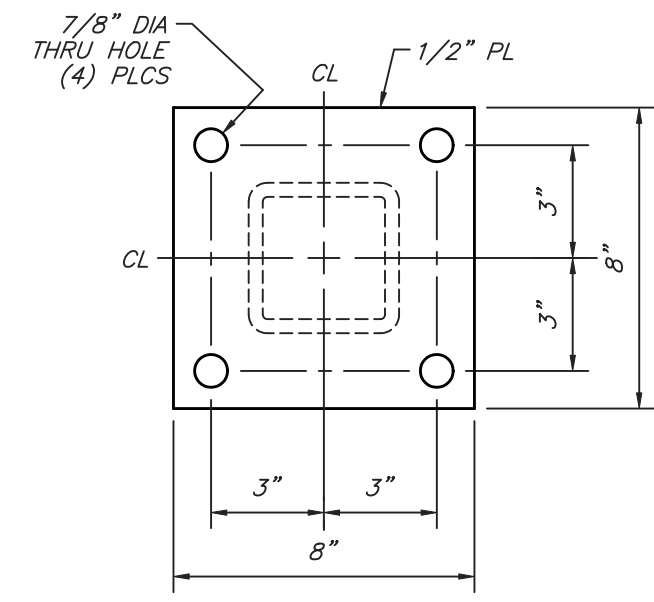


7/8" DIA HOLE THRU BOTH SIDES OF TUBE TYP (2) PLCS ON TOP OF SUPPORT

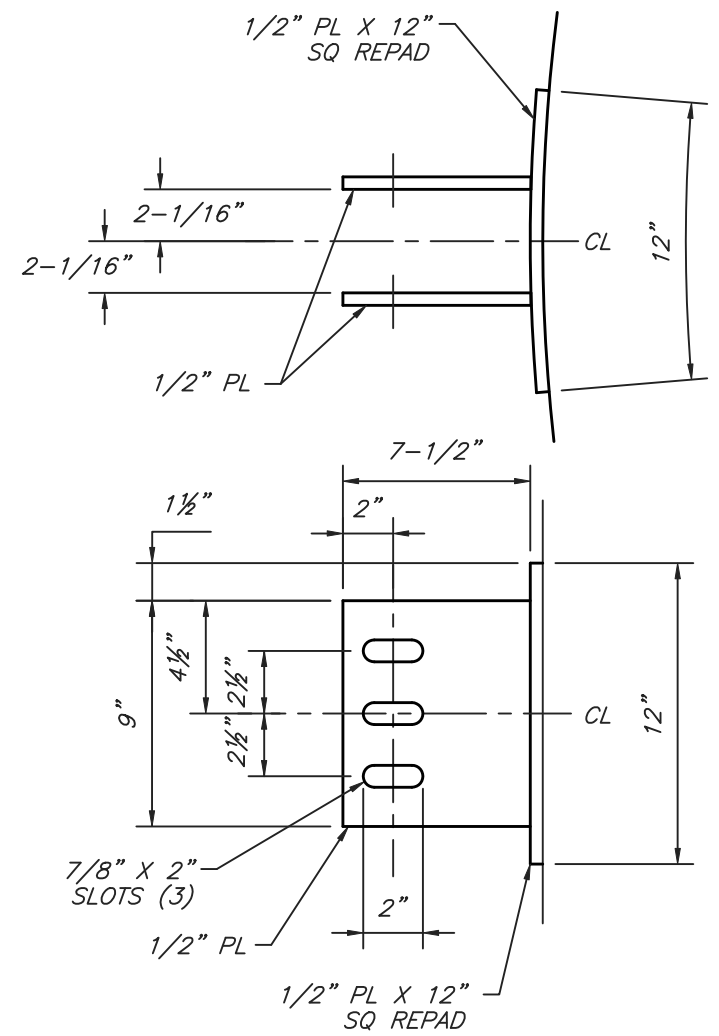


**KNEE BRACE**  
(2) REQ'D FOR EA SUPPORT

4" X 4" X 3/8" WALL RECTANGULAR TUBE CAP OPEN ENDS WITH PL



**TYPICAL FOOT PAD**  
(3) REQ'D



**CATWALK SUPPORT BRACKETS**  
PROVIDE (3) 3/4" X 6-1/2" HX BOLT,  
(6) 3/4" FLT WSHR, (3) 3/4" LK WSHR,  
(3) HX NUT FOR EA SET OF BRKTS  
(6) SETS OF BRKTS REQ'D  
(2) SETS PER TANK

- NOTES**
- SUPPORTS TO RECEIVE SSPC-SP6 SANDBLAST, THEN COATED WITH CHEMLINE CHEMTHANE 3107 SAFETY YELLOW ACRYLIC POLYURETHANE.
  - APPROXIMATE WEIGHT OF SUPPORT IS 440 LBS.

**IMPORTANT NOTE**

IF POSSIBLE, REVIEW THIS DRAWING WITH YOUR CONTRACTOR. OF SPECIFIC IMPORTANCE, DOES THE TANK HAVE THE NECESSARY FITTINGS FOR THE EQUIPMENT YOU PLAN TO INSTALL

**CUSTOMER APPROVAL REQUIRED**

- MAKE NOTED CHANGES AND RE-SUBMIT
- APPROVED WITH CHANGES NOTED
- APPROVED AS DRAWN

SIGNATURE \_\_\_\_\_ DATE \_\_\_\_\_



FOR  
ATHENS BIO-DIESEL  
ATHENS, AL

DRAWN BY  
D. HIGDON

CHECKED BY

DATE  
11-12-07

CUSTOMER ORDER NO.

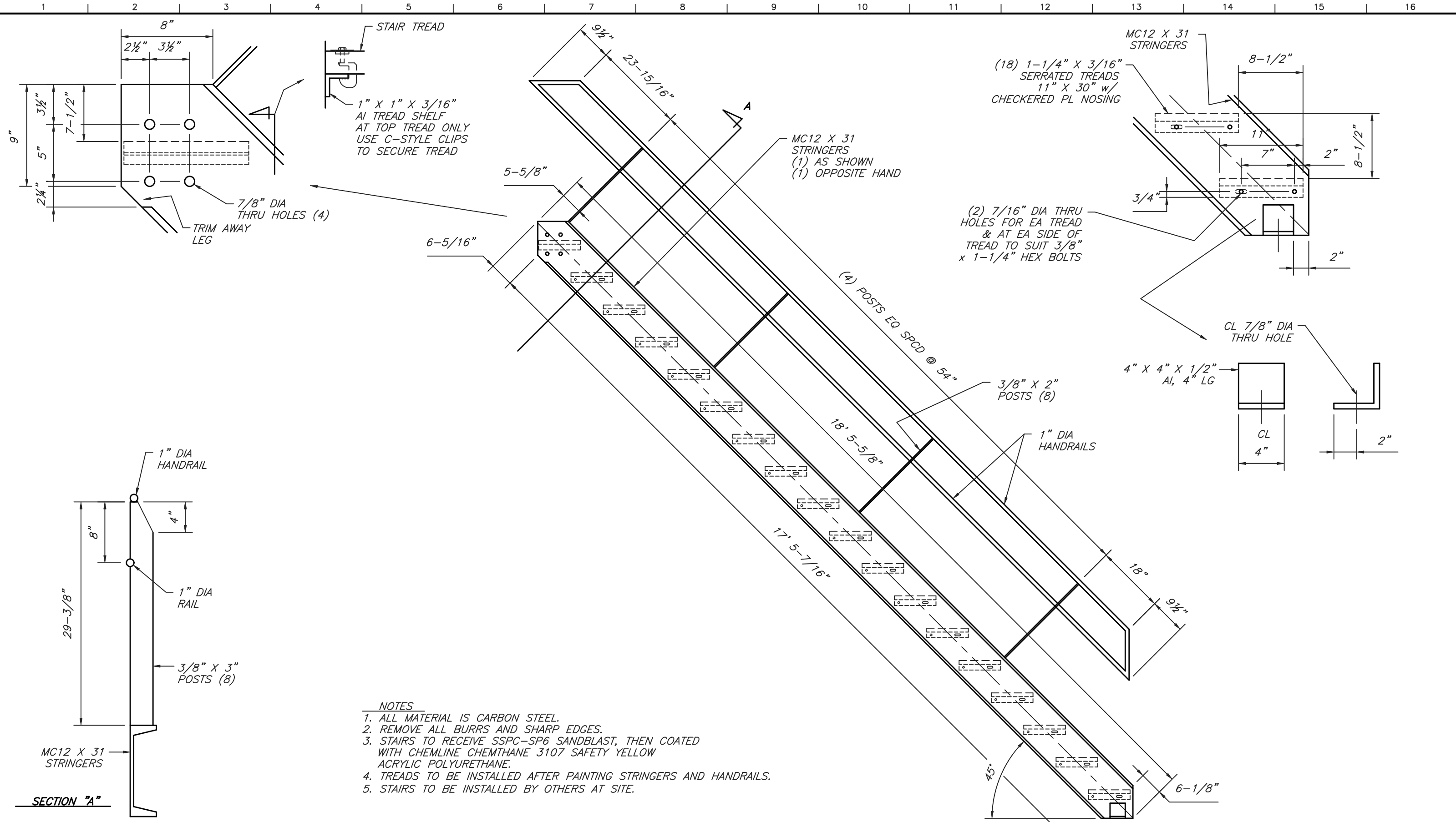
QUANTITY  
THREE

DRAWING DESCRIPTION  
GENERAL ARRANGEMENT  
CATWALK SUPPORTS

DRAWING FILE  
17132B\_10

SHEET  
10 OF 14

REVISION



- NOTES**
1. ALL MATERIAL IS CARBON STEEL.
  2. REMOVE ALL BURRS AND SHARP EDGES.
  3. STAIRS TO RECEIVE SSPC-SP6 SANDBLAST, THEN COATED WITH CHEMLINE CHEMTHANE 3107 SAFETY YELLOW ACRYLIC POLYURETHANE.
  4. TREADS TO BE INSTALLED AFTER PAINTING STRINGERS AND HANDRAILS.
  5. STAIRS TO BE INSTALLED BY OTHERS AT SITE.

**IMPORTANT NOTE**

IF POSSIBLE, REVIEW THIS DRAWING WITH YOUR CONTRACTOR. OF SPECIFIC IMPORTANCE, DOES THE TANK HAVE THE NECESSARY FITTINGS FOR THE EQUIPMENT YOU PLAN TO INSTALL

**CUSTOMER APPROVAL REQUIRED**

MAKE NOTED CHANGES AND RE-SUBMIT  
 APPROVED WITH CHANGES NOTED  
 APPROVED AS DRAWN

SIGNATURE \_\_\_\_\_ DATE \_\_\_\_\_



FOR  
 ATHENS BIO-DIESEL  
 ATHENS, AL

DRAWN BY  
 D. HIGDON

CHECKED BY

CUSTOMER ORDER NO.

QUANTITY  
 ONE

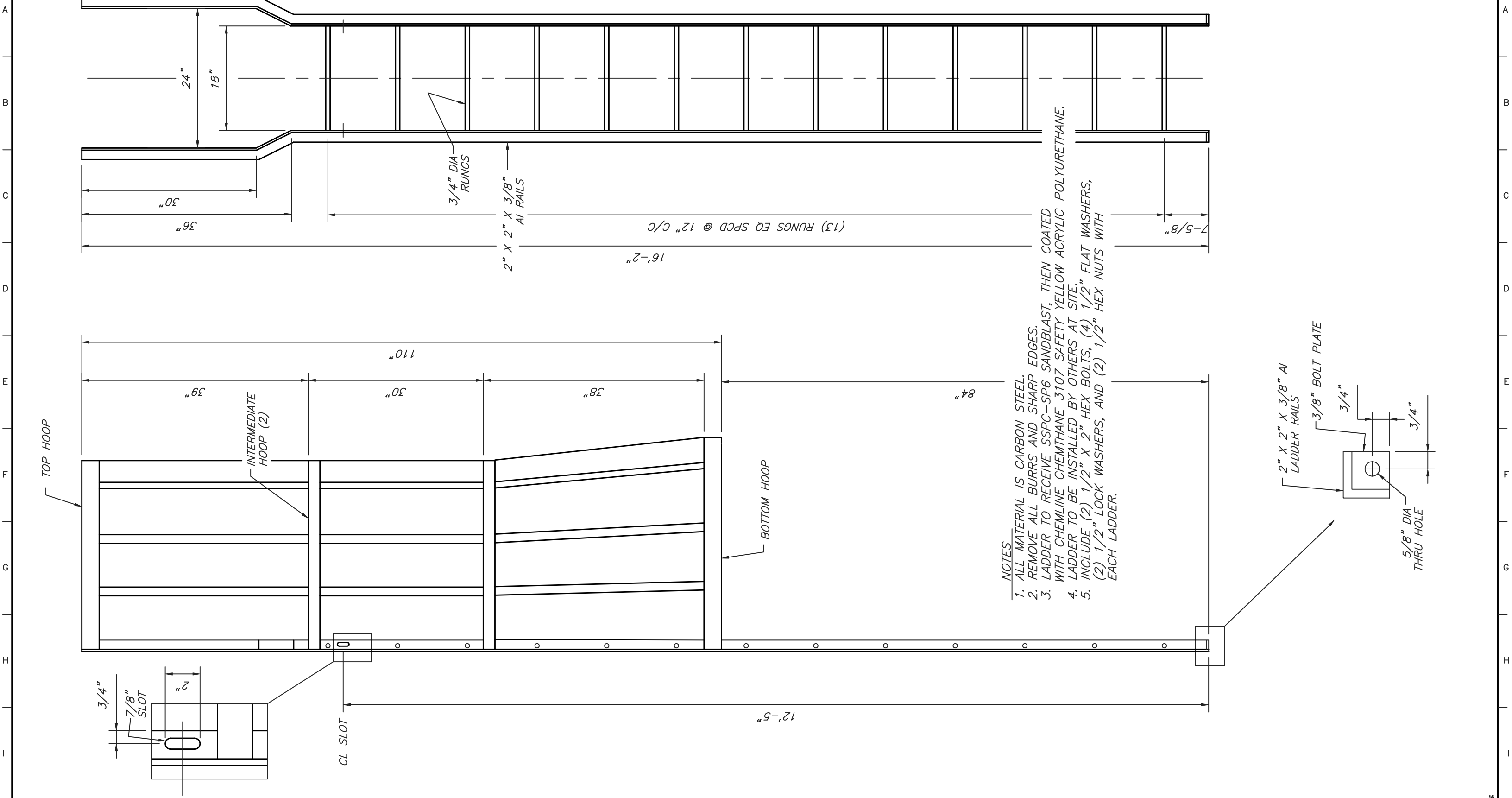
DATE  
 11-12-07

DRAWING DESCRIPTION  
 GENERAL ARRANGEMENT  
 STAIRS

DRAWING FILE  
 17132B\_11

SHEET  
 11 OF 14

REVISION



**NOTES**

1. ALL MATERIAL IS CARBON STEEL.
2. REMOVE ALL BURRS AND SHARP EDGES.
3. LADDER TO RECEIVE SSPC-SP6 SANDBLAST, THEN COATED WITH CHEMLINE CHEMTHANE 3107 SAFETY YELLOW ACRYLIC POLYURETHANE.
4. LADDER TO BE INSTALLED BY OTHERS AT SITE.
5. INCLUDE (2) 1/2" X 2" HEX BOLTS, (4) 1/2" FLAT WASHERS, (2) 1/2" LOCK WASHERS, AND (2) 1/2" HEX NUTS WITH EACH LADDER.

**IMPORTANT NOTE**

IF POSSIBLE, REVIEW THIS DRAWING WITH YOUR CONTRACTOR. OF SPECIFIC IMPORTANCE, DOES THE TANK HAVE THE NECESSARY FITTINGS FOR THE EQUIPMENT YOU PLAN TO INSTALL

**CUSTOMER APPROVAL REQUIRED**

MAKE NOTED CHANGES AND RE-SUBMIT  
 APPROVED WITH CHANGES NOTED  
 APPROVED AS DRAWN

SIGNATURE \_\_\_\_\_ DATE \_\_\_\_\_



FOR  
 ATHENS BIO-DIESEL  
 ATHENS, AL

DRAWN BY  
 D. HIGDON

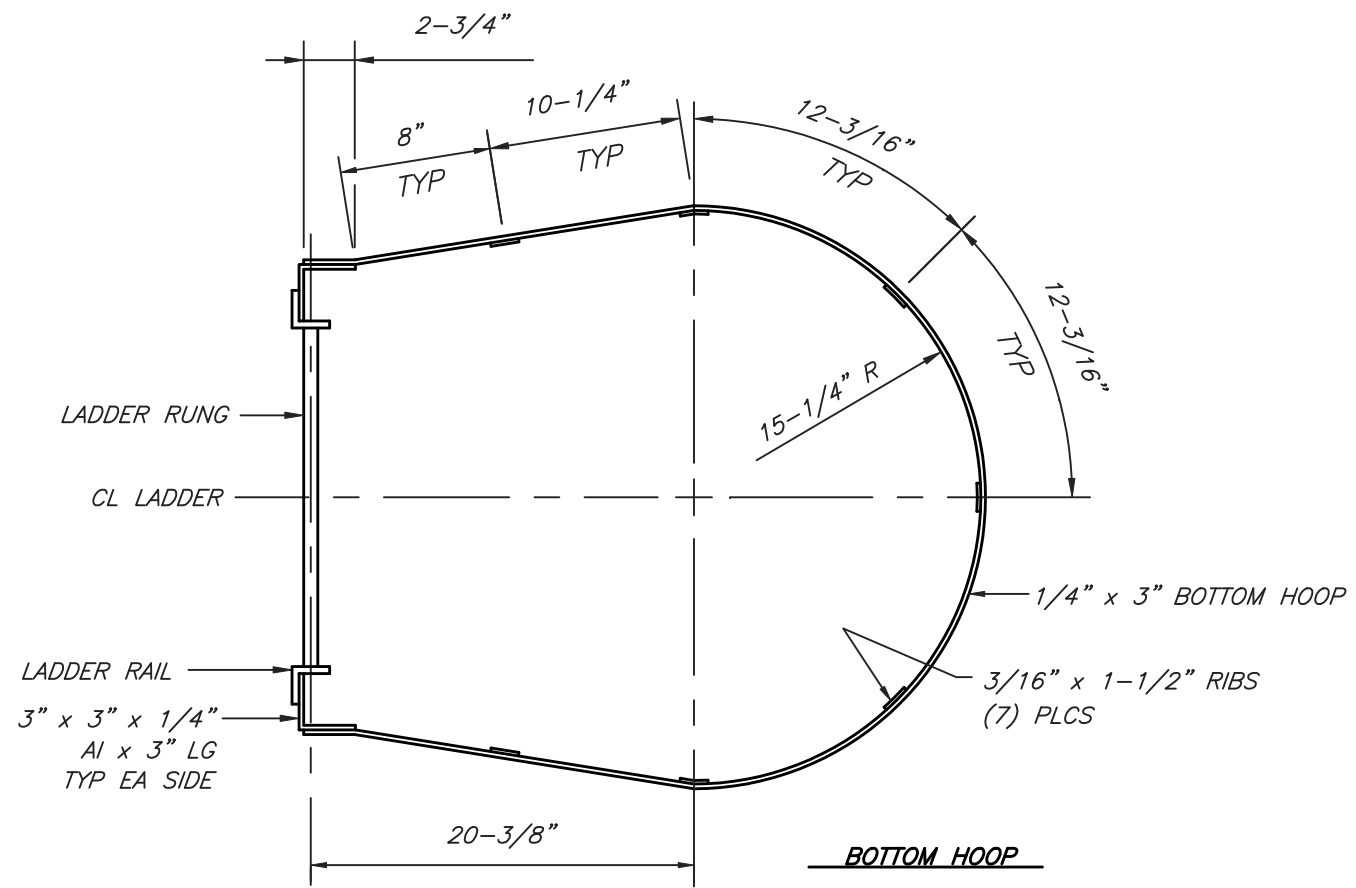
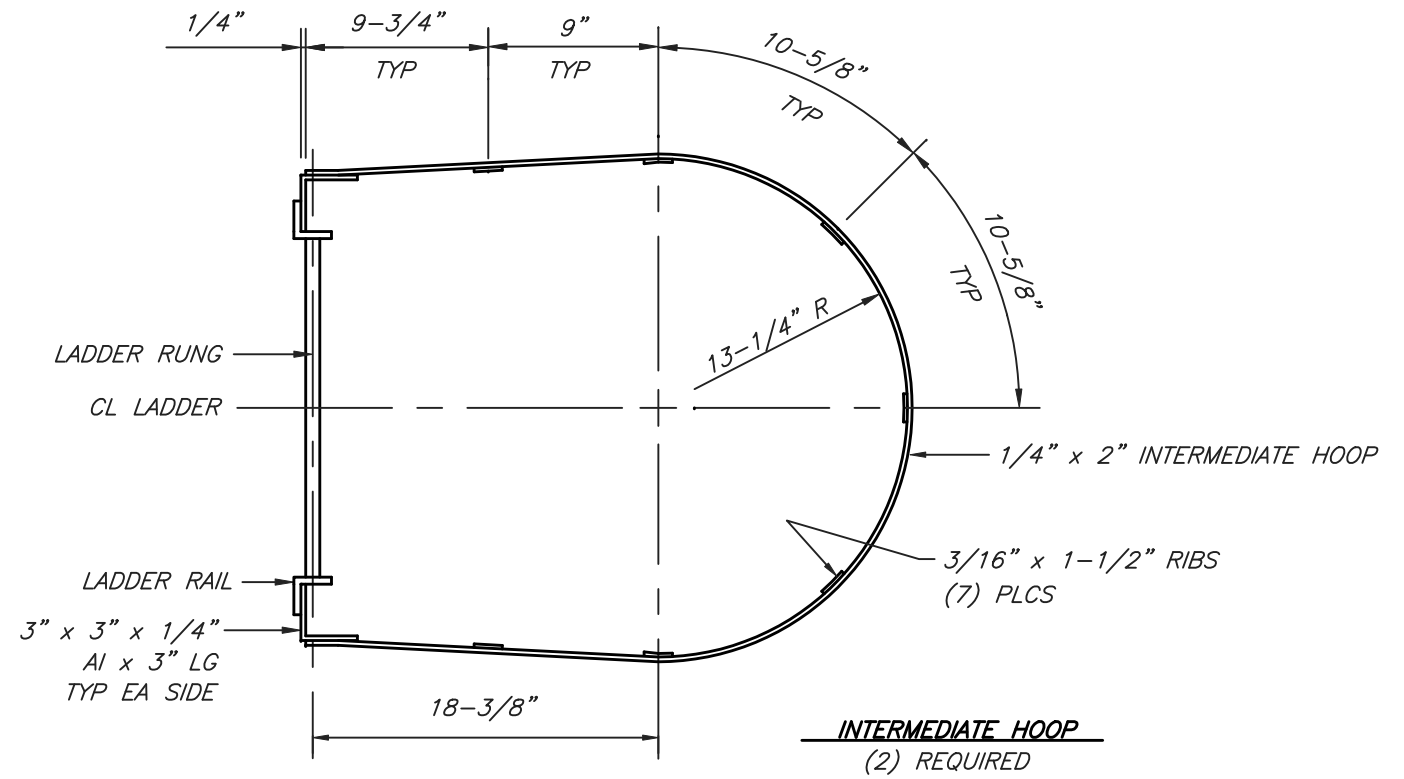
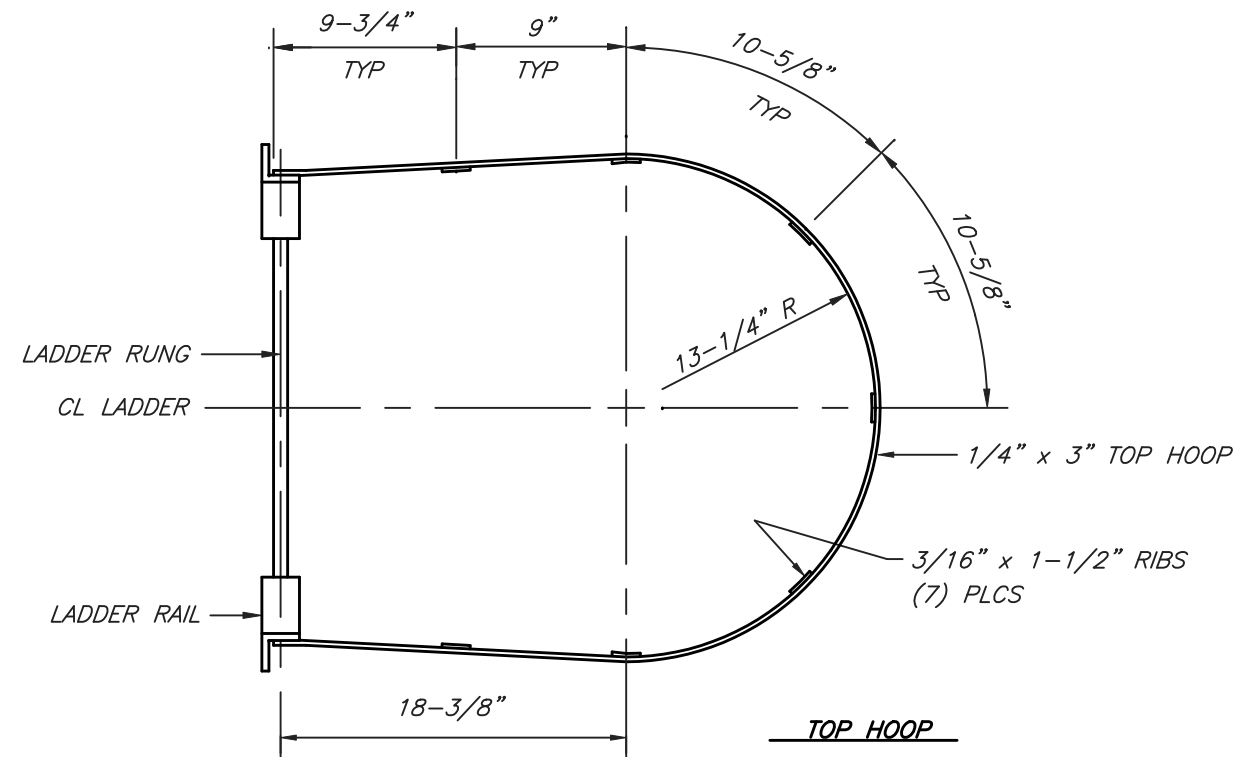
CHECKED BY

CUSTOMER ORDER NO.

QUANTITY  
 ONE

DATE  
 11-12-07

DRAWING DESCRIPTION GENERAL ARRANGEMENT LADDER		
DRAWING FILE 17132B_12	SHEET 12 OF 14	REVISION 0



**IMPORTANT NOTE**

IF POSSIBLE, REVIEW THIS DRAWING WITH YOUR CONTRACTOR. OF SPECIFIC IMPORTANCE, DOES THE TANK HAVE THE NECESSARY FITTINGS FOR THE EQUIPMENT YOU PLAN TO INSTALL

**CUSTOMER APPROVAL REQUIRED**

- MAKE NOTED CHANGES AND RE-SUBMIT
- APPROVED WITH CHANGES NOTED
- APPROVED AS DRAWN

SIGNATURE \_\_\_\_\_ DATE \_\_\_\_\_



**SOUTHERN**  
Tank & Mfg Co  
800-876-2321

FOR

ATHENS BIO-DIESEL  
ATHENS, AL

DRAWN BY  
D. HIGDON

CHECKED BY

CUSTOMER ORDER NO.

QUANTITY

DATE  
11-12-07

TANKPART

DRAWING DESCRIPTION

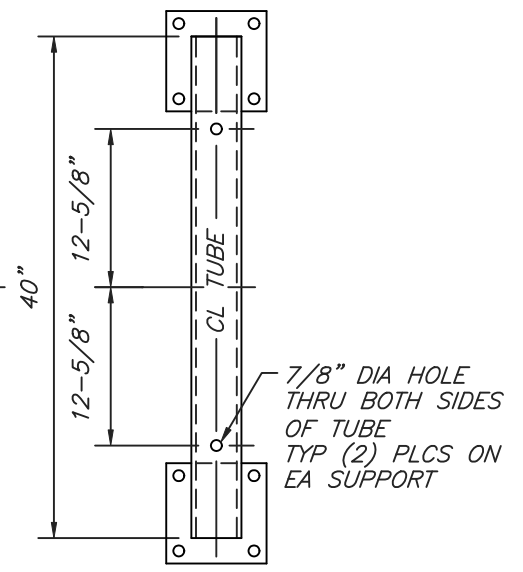
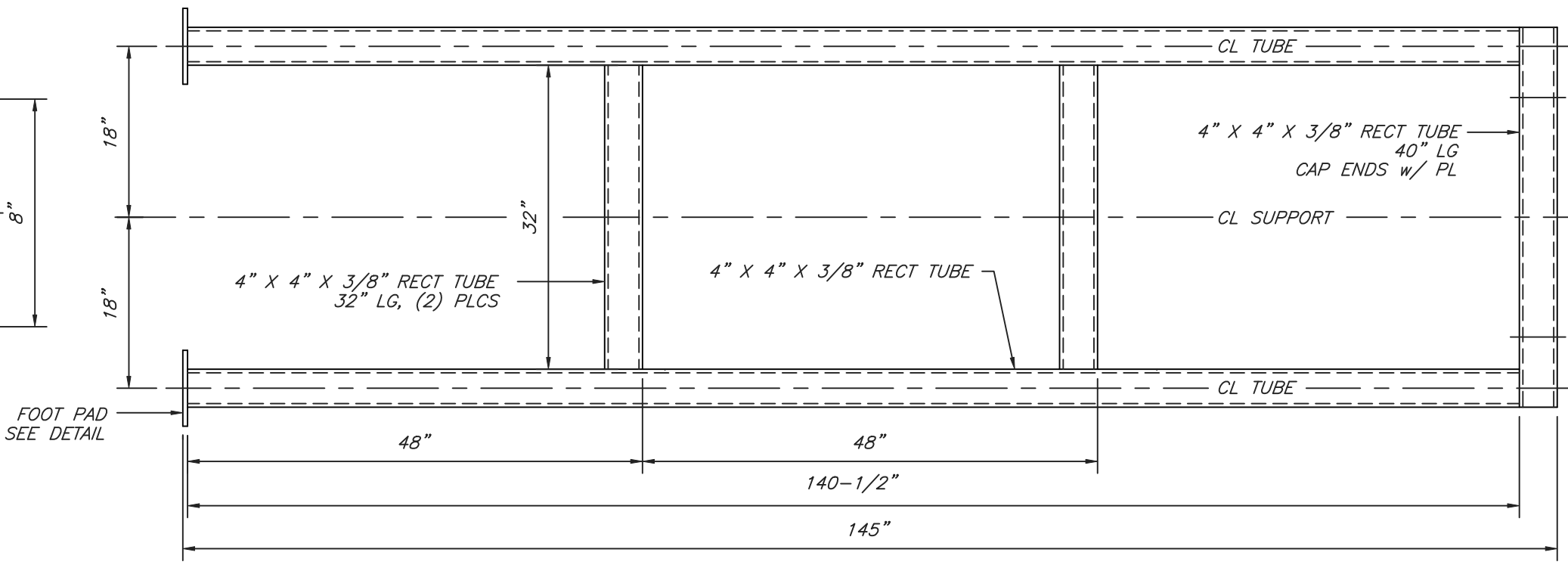
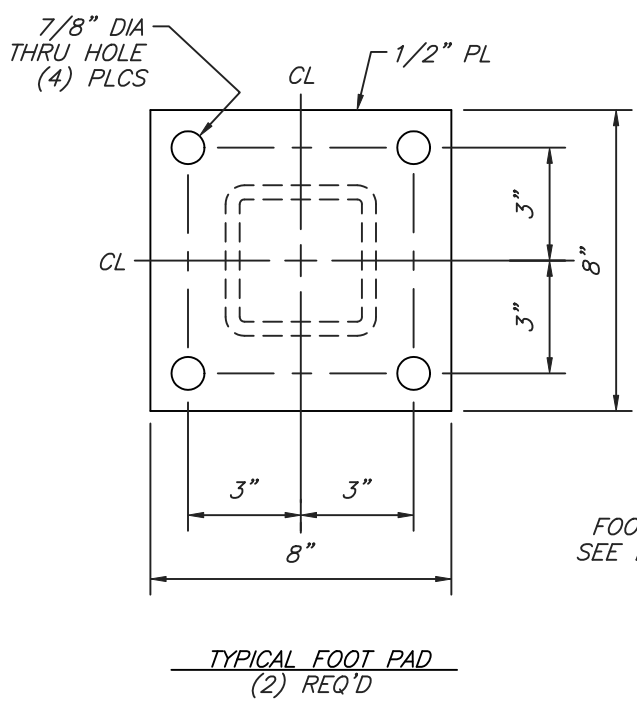
GENERAL ARRANGEMENT  
LADDER HOOPS

DRAWING FILE  
17132B\_13

SHEET  
13 OF 14

REVISION





CATWALK END SUPPORT  
(1) REQ'D

- NOTES
1. ALL MATERIAL IS CARBON STEEL.
  2. SUPPORTS TO RECEIVE SSPC-SP6 SANDBLAST, THEN COATED WITH CHEMLINE CHEMTHANE 3107 SAFETY YELLOW ACRYLIC POLYURETHANE.
  3. SUPPORTS TO BE INSTALLED BY OTHERS AT SITE.

**IMPORTANT NOTE**

IF POSSIBLE, REVIEW THIS DRAWING WITH YOUR CONTRACTOR. OF SPECIFIC IMPORTANCE, DOES THE TANK HAVE THE NECESSARY FITTINGS FOR THE EQUIPMENT YOU PLAN TO INSTALL

**CUSTOMER APPROVAL REQUIRED**

MAKE NOTED CHANGES AND RE-SUBMIT

APPROVED WITH CHANGES NOTED

APPROVED AS DRAWN

SIGNATURE \_\_\_\_\_ DATE \_\_\_\_\_



**SOUTHERN**  
Tank & Mfg Co  
800-876-2321

FOR  
ATHENS BIO-DIESEL  
ATHENS, AL

DRAWN BY  
D. HIGDON

CHECKED BY

DATE  
11-12-07

CUSTOMER ORDER NO.

QUANTITY

TANKPART

DRAWING DESCRIPTION  
GENERAL ARRANGEMENT  
CATWALK END SUPPORT

DRAWING FILE  
17132B\_14

SHEET  
14 OF 14

REVISION