



Goulds Pumps

SUPPLIER DOCUMENTS INDEX

<p>TO: -DELTA-T PROJECT SERVICES GROUP,LLC P.O. BOX 86810 ATTN: KIM MOON BATON ROUGE, LA 70879 kbmoon@fbd.com -DELTA-T CORPORATION 133 WALLER MILL RD ATN: DOCUMENT CONTROL docjobs@ WILLIAMSBURG, VA 23185 deltacorp.com CC: PUTA SAYEH (Transmittal Copy only) psayeh@deltatcorp.com MARK ANDRUS (mark.andrus@itt.com)</p>	<p>SERIAL NO.: A734F823 CUSTOMER: BUNGE-ERGON VICKSBURG LLC / ORDER: 602440 P.O.NO.: 4500145890 PUMP ITEM NO.: PC-3201 SERVICE: PRIMARY SCRUBBER PUMP OWNER : BUNGE-ERGON VICKSBURG,LLC PROJECT : BUNGE-ERGON JOB# : 61310</p>	<p><u>SUPPLIER INFORMATION :</u> GOULDS PUMPS, INC. 240 FALL STREET SENECA FALLS, NY, 13148 CONTRACT ADMINISTRATOR: Carl Sangiacomo CONTRACT MANAGER: Dave Spruill DATE: 5/31/07 MAILED VIA: E-MAIL & REGULAR MAIL</p>
--	---	--

SUPPLIER DOCUMENT TITLE	CUSTOMER DOCUMENT CODE	SUPPLIER DOC.# / REVISION NO.	REVIEW QTY.	FINAL QTY.	DATE APPROVED	SUB#	DUR	SUBMIT	RETURN	RET.
							DATE	DATE	DATE	CODE
Pump Documents Required										
* Pump Outline				1P+1E	0/00/00	01	5/31/07	5/31/07	0/00/00	
* Tapped Openings				1P+1E	0/00/00	01	5/31/07	5/31/07	0/00/00	
* Pump CDS Curve				1P+1E	0/00/00	01	5/31/07	5/31/07	0/00/00	
* Cross Sectional				1P+1E	0/00/00	01	5/31/07	5/31/07	0/00/00	
* Nozzle Loading				1P+1E	0/00/00	01	5/31/07	5/31/07	0/00/00	
* ANSI Pump Instruction Manuals				1P+1E	0/00/00	01	5/31/07	5/31/07	0/00/00	
Seal Documents Required										
* Seal Drawing				1P+1E	0/00/00	01	5/31/07	5/31/07	0/00/00	
Motor Documents Required										
* Motor Outline				1P+1E	0/00/00	01	5/31/07	5/31/07	0/00/00	
* Motor Wiring Diagram				1P+1E	0/00/00	01	5/31/07	5/31/07	0/00/00	
* Motor Electrical/Performance				1P+1E	0/00/00	01	5/31/07	5/31/07	0/00/00	
* Motor Instructions-(Reliance)				1P+1E	0/00/00	01	5/31/07	5/31/07	0/00/00	

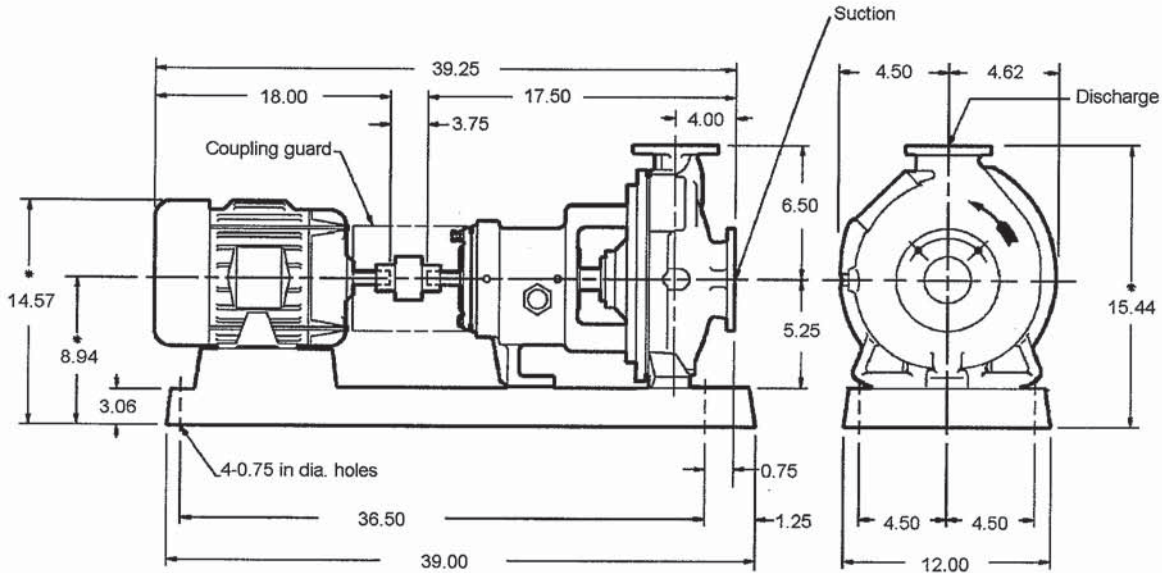
(*) Denotes Documents in this Submittal.

*** End of Report ***

— Your complete Approval is required before order is scheduled and released to manufacturing. Please forward Approval by / / .

** The above literature is for your information and records. It does not requires your approval. Retain literature as your final distribution.

Note: Any Changes may affect Quoted Price and Shipping Details.



Pump specification

SUCT.FLANGE SIZE 3"	DRILLING ANSI 150#	FACING FF	FINISH SERRATED
DISCH.FLANGE SIZE 1.5"	DRILLING ANSI 150#	FACING FF	FINISH SERRATED
PUMP ROTATION (LOOKING AT PUMP FROM MOTOR)		CW	
TYPE OF LUBRICATION	FLOOD OIL	COOLED	NO
TYPE OF STUFFING BOX	TAPER BORE PLUS WITH AXIAL RIBS	COOLED	NO
TYPE OF SEALING	MECHANICAL SEAL		

Weights and Measurements

PUMP	92.0 lb
MOTOR/CPLG	140.0/8.0 lb
BASEPLATE	80.0 lb
TOTAL	320.0 lb
GR.VOLUME w/BOX	9.4 ft ³
GR.WEIGHT w/BOX	367.0 lb

Motor specification

MOTOR BY	PUMP MFG	MOUNT BY	PUMP MFG	MFG.	RELLANCE
FRAME	213T	POWER	7.5 hp	RPM	3600
PHASE	3	FREQUENCY	60 HZ	VOLTS	230/460
INSULATION	F	S.F.	1.15		
ENCLOSURE	TEFC-XEX SEVERE DUTY PREM. EFF.				

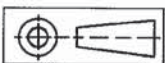
Notes and References

- MTR DIMENSIONS ARE APPROXIMATE
 - INSTALL FOUNDATION BOLTS IN PIPE SLEEVES
 - ALLOW FROM 0.75 to 1.50in. FOR GROUTING. SEE INSTRUCTION BOOK FOR DETAILS.
 *Tolerance is -0.50 +0

FOR PUMP TAPPED OPENINGS REFER TO DWG.:
 A734823T

Auxiliary specification

COUPLING BY	PUMP MFG	CPLG TYPE	T.B. WOOD'S SC 6
CPL GUARD BY	PUMP MFG.	CPLG GUARD MATL	CARBON STEEL
BASEPLATE	CAST IRON CAMBER TOP B00050A		
MECH.SEAL	AES - CURC - ABCT11AV01-A		



All dimensions are in inches.
 Drawing is not to scale
 Weights (lbs) are approximate

DIMENSIONS ARE CERTIFIED FOR CONSTRUCTION BY:

Andrew Young

DATE May 31, 2007

Customer: BUNGE-ERGON VICKSBURG LLC
 Goulds Serial No: A734F823
 Customer P.O. No: 4500145890
 Item No: PC-3201
 Service: PRIMARY SCRUBBER PUMP
 Owner: BUNGE-ERGON VICKSBURG, LLC
 Project: BUNGE-ERGON
 Job#: 61310

DRAWING NO A7348230 **Rev. 0** Date: May 31, 2007

SUPERSEDES ANY PREVIOUS DRAWINGS

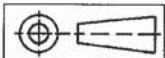
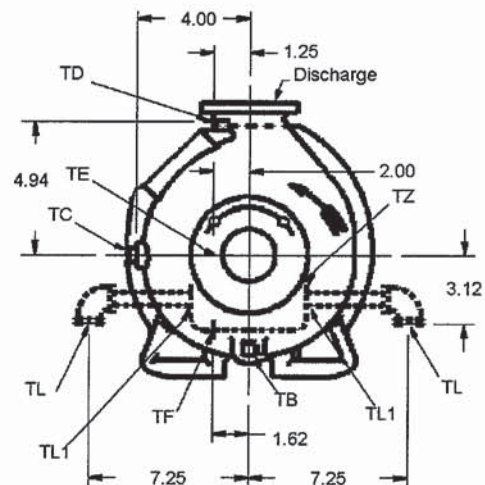
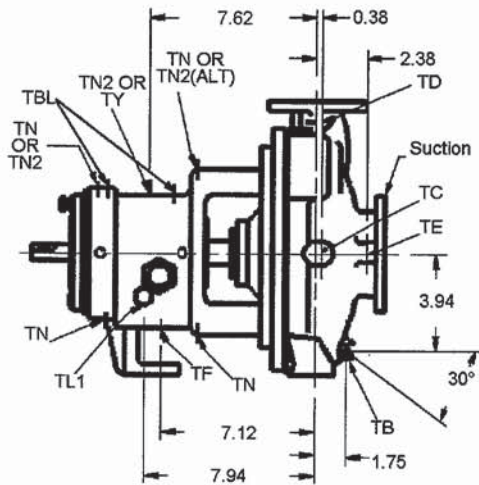


GOULDS PUMPS TAPPED OPENINGS Model 3196 STX Size 1.5x3-6



TAPPED OPENINGS MODEL 3196 STX 1.5x3-6 A.N.S.I NO. AB

NO.	SIZE	QTY.	PURPOSE	FURNISHED		NO.	SIZE	QTY.	PURPOSE	FURNISHED	
				YES/NO						YES/NO	
TB	1/2	1	CASING DRAIN	YES		TL1	---	2	FRAME COOLER ACCESS	YES	
TC	1/4	1	BY-PASS CONNECTION	NO		TN	1/4	4	GREASE FITTING	YES	
TD	1/4	1	DISCH. GAUGE CONNECTION	NO		TN2	1/4	2	OIL MIST INJECTION PORT	YES	
TE	1/4	1	SUCTION GAUGE CONNECTION	NO		TY	1/2	1	OIL FILL	YES	
TF	3/8	1	BEARING FRAME DRAIN	YES		TZ	1/4	1	BOTTLE OILER CONNECTION	YES	
TL	1/2	2	FRAME COOLING CONNECTION	NO		TBL	1/4	2	VIB./TEMP. CONNECTION	YES	



All dimensions are in inches.
Drawing is not to scale

DIMENSIONS ARE CERTIFIED FOR CONSTRUCTION BY:
Andrew Young DATE May 31, 2007
 Customer: BUNGE-ERGON VICKSBURG LLC
 Goulds Serial No: A734F823
 Customer P.O. No: 4500145890
 Item No: PC-3201
 Service: PRIMARY SCRUBBER PUMP
 Owner: BUNGE-ERGON VICKSBURG, LLC
 Project: BUNGE-ERGON
 Job#: 61310

DRAWING NO A734823T **Rev. 0** Date: May 31, 2007
 SUPERSEDES ANY PREVIOUS DRAWINGS



CENTRIFUGAL PUMP CHARACTERISTICS

CDS 2076-8

RPM 3520

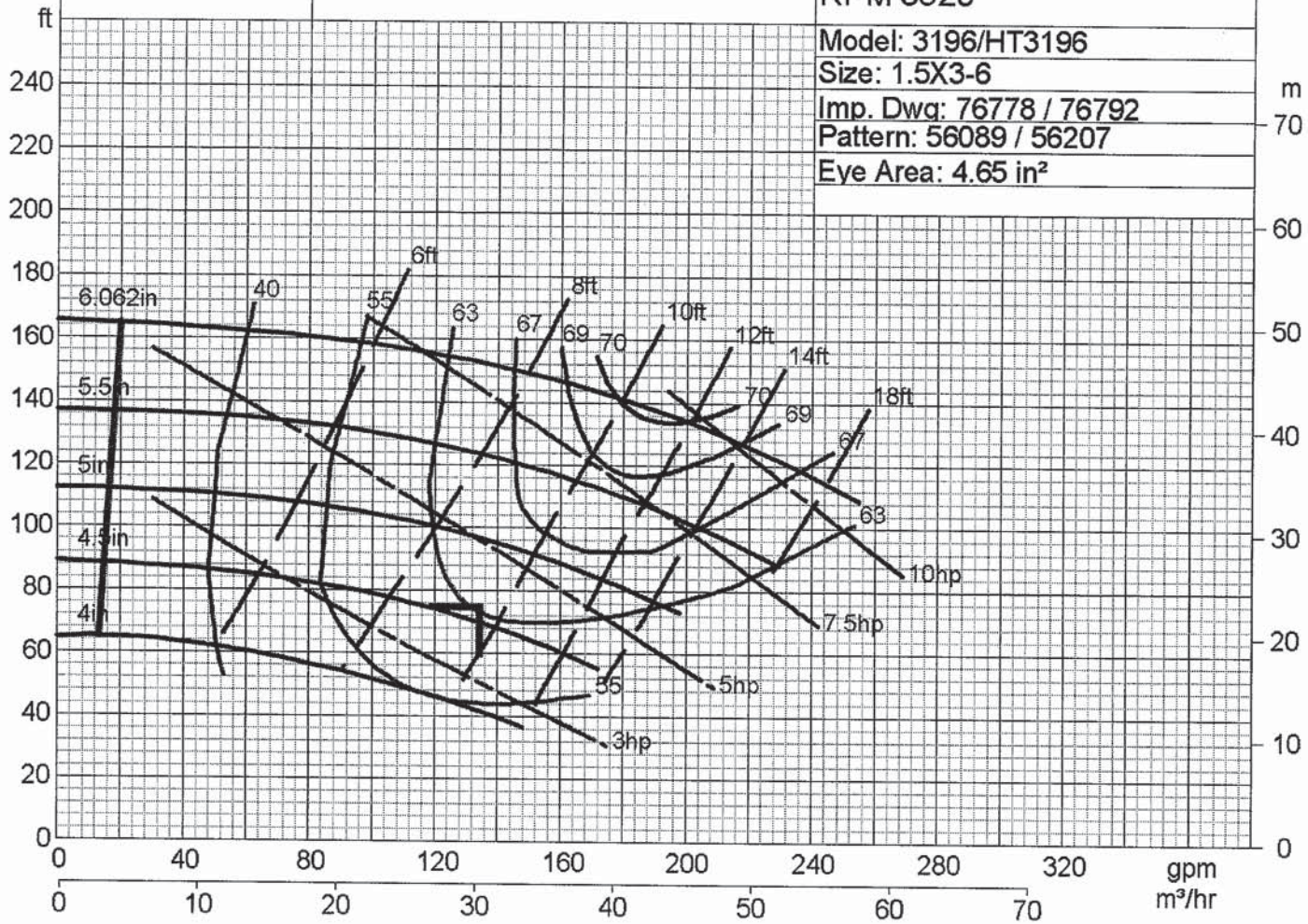
Model: 3196/HT3196

Size: 1.5X3-6

Imp. Dwg: 76778 / 76792

Pattern: 56089 / 56207

Eye Area: 4.65 in²

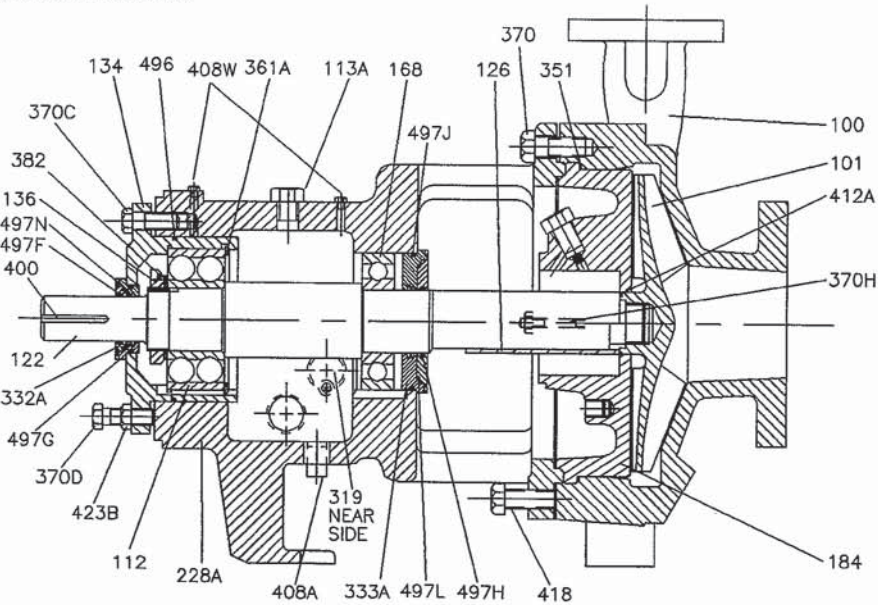


Rated Flow: 135.0 gpm
Rated TDH: 70.0 ft
Imp. Diam.: 4.6250 in
Certified By: Andrew Young

Customer: BUNGE-ERGON VICKSBURG LLC
Goulds Serial No: A734F823
Customer P.O. No: 4500145890
Item No: PC-3201
Service: PRIMARY SCRUBBER PUMP
Owner: BUNGE-ERGON VICKSBURG, LLC
Project: BUNGE-ERGON
Job#: 61310



FLOOD OIL LUBRICATION



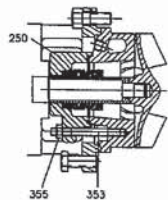
* Recommended spare parts
Items not illustrated

BILL OF MATERIAL

ITEM	QTY	PART NAME	MATERIAL	ASTM#
100	1	CASING	DUCTILE IRON	DI 60 A395-88
100A	1 #	CASING W/DRN	DUCTILE IRON	DI 60 A395-88
101	1 *	IMPELLER W/O-RING	DUCTILE IRON	DI 60 A536-84
112	1 *	BALL BEARING OUTBOARD		
113A	1 *	PIPE_PLUG OIL FILL	CARBON STEEL GR B	A307
122	1 *	SHAFT	316SS	A276-91A
126	1 *	SHAFT SLEEVE	316SS	A276-91A
134	1 *	BEARING HOUSING	CAST IRON	CI 45 A48
136	1 *	BEARING LOCK NUT		
168	1 *	BALL BEARING (INBOARD)		
184	1 *	ST BOX COVER		
228A	1	FRAME	DUCTILE IRON	DI 60 A395-88
319	1	SIGHT WINDOW	DUCTILE IRON	DI 60 A536-84
322A	1 *	LAB SEAL OB	BRONZE	
332A	1 *	LAB SEAL IB	BRONZE	
333A	1 *	CASE GASKET	NON/ASB	
351	1 *	GLAND STUD	304SS	A276-95
353	4 #	GLAND WASHER	304SS	A276-95
354	4 #	HEX NUT (GLAND STUD)	304SS	A276-95
355	4 #	NUT_HEX (COVER TO ADAPT)	304SS	A276-95
357K	2 #	GLAND PLUG	316SS	A276-91A
358N	3 #	RETAINING RING BRG HSG		
361A	1 *	H CAP SCREW (CASE)	CARBON STEEL GR B	A307
370	4	H CAP SCREW (BRG HSG-FRA)	CARBON STEEL GR B	A307
370C	3	H CAP SCREW (IMPLR ADJ)	CARBON STEEL GR B	A307
370D	3	STUD (COVER)	304SS	A276-95
370H	2	BEARING LOCKWASHER		
382	1 *	MECHANICAL SEAL (ORDERED)		
383	1 *	SQ END KEY (CPLG)		
400	1 *	PIPE PLUG (OIL DRAIN)	CARBON STEEL 1018/1020	A108
408A	1	PIPE PLUG (OIL MIST CONN)		
408H	4 #	PIPE PLUG (OILER PLUG)	CARBON STEEL GR B	A307
408J	1 #	PIPE PLUG (FRAME CLG IN)		
408L	1 #	PIPE PLUG (FR CLG OUT)		
408M	1 #	O-RING IMPLR	TEFLON	A3651
412A	1 *	H TAP BOLT	304SS	A276-95
418	2	JAM NUT (BRG HSG)	CARBON STEEL GR B	A307
423	3 #	O-RING BRG HOUSING	BUNA-N	
423	3 #	O-RING LAB SEAL	VITON	
496	1 *	O-RING LAB SEAL	BUNA-N	
497F	1 *	O-RING LAB SEAL	VITON	
497G	1 *	O-RING LAB SEAL	BUNA-N	
497H	1 *	O-RING LAB SEAL	VITON	
497J	1 *	O-RING LAB SEAL	BUNA-N	
497L	1 *	ORING_RADIAL O.B	VITON	
497N	1 *	ORING_THRUST O.D	VITON	
902	1 #	MAINTENANCE KIT		
906A	1 #	OIL PUMP REPAIR KIT		
920B	1 #	POWER END		

SEAL CHAMBER

TAPER BORE-TM PLUS



REFER TO SEAL DRAWING NO. 7101731

FORM # ED0319 +322

Customer: BUNGE-ERGON VICKSBURG LLC
Goulds Serial No: A734F823
Customer P.O. No: 4500145890
Item No: PC-3201
Service: PRIMARY SCRUBBER PUMP
Owner: BUNGE-ERGON VICKSBURG, LLC
Project: BUNGE-ERGON
Job#: 61310

DRAWING NO A734823C **Rev. 0** Date: May 31, 2007

SUPERSEDES ANY PREVIOUS DRAWINGS

725.1A400

June 9, 2000
(Sup. 8/13/99)
English Units

FLANGE LOADING CONSTANTS

MODEL 3196 (EXCEPT TITANIUM XLT-X)

Materials: DI, Steel

Flanges: 150 & 300

Size	F _{max}		M _{max}		F _{amax}		M _{bmax}	
	Suction	Discharge	Suction	Discharge	Suction	Discharge	Suction	Discharge
1 x 1½-6	970	200	1,150	535	7,470	2,565	995	365
1½ x 3-6	1,060	210	1,250	565	6,865	3,440	965	265
2 x 3-6	870	210	1,055	570	4,580	2,005	965	465
1 x 1½-8	970	200	1,155	535	7,470	2,565	995	365
1½ x 3-8	1,060	210	1,250	565	6,865	3,440	965	265
2 x 3-6	885	450	1,160	610	-	-	-	-
2 x 3-8	1,115	650	1,675	975	-	-	-	-
3 x 4-7	1,050	620	1,400	1,160	-	-	-	-
3 x 4-8/G	1,050	620	1,400	1,160	-	-	-	-
1 x 2-10	1,410	1,020	1,980	1,660	11,560	6,600	1,040	330
1½ x 3-10	1,110	735	1,710	1,030	-	-	-	-
2 x 3-10	1,075	730	1,655	1,060	-	-	-	-
3 x 4-10/H	1,080	620	1,440	1,170	-	-	-	-
4 x 6-10/G/H	840	725	1,460	1,190	-	-	-	-
1½ x 3-13	985	655	1,450	1,060	-	-	-	-
2 x 3-13	1,330	790	2,950	1,740	-	-	-	-
3 x 4-13	1,140	785	2,300	1,925	-	-	-	-
4 x 6-13	1,480	625	2,960	1,480	-	-	-	-
6 x 8-13	4,735	1,560	10,125	11,395	15,415	7,335	7,585	6,710
8 x 10-13	4,580	1,855	9,640	14,240	12,175	9,640	5,655	7,595
6 x 8-15	4,500	1,045	9,280	8,010	-	-	-	-
8 x 10-15/G	3,995	1,495	8,360	11,755	8,380	3,615	7,345	9,905

MATERIAL: DI, STEEL

8 x 10- 16H	5,092	1,832	9,055	14,750	9,308	7,444	7,189	8,505
4 x 6-17	4,847	1,556	7,197	7,740	9,223	7,170	7,649	5,090
6 x 8-17	4,902	1,559	8,827	9,377	15,704	7,289	7,585	6,710
8 x 10-17	4,828	1,750	8,992	14,741	9,236	7,334	7,713	8,452

MODEL 3196 XLT-X

Material: Titanium

Flanges: 150

Size	F _{max}		M _{max}		F _{amax}		M _{bmax}	
	Suction	Discharge	Suction	Discharge	Suction	Discharge	Suction	Discharge
6x8-13	5,375	2,015	11,495	14,735	16,915	14,955	5,320	4,240
8x10-13	5,175	2,280	10,906	17,535	10,130	16,555	5,410	5,320
6x8-15	5,455	1,920	11,490	14,735	17,170	14,255	5,320	4,240
8x10-15/G	5,210	2,230	9,195	17,525	10,127	3,780	5,410	5,320
8x10-16H	5,601	2,015	9,960	16,225	10,238	8,188	7,908	9,355
4x6-17	5,251	2,010	8,171	8,787	10,120	14,619	5,365	3,216
6x8-17	5,565	2,014	10,022	10,645	17,231	14,862	5,320	4,240
8x10-17	5,230	2,260	10,210	16,735	10,135	14,953	5,410	5,340

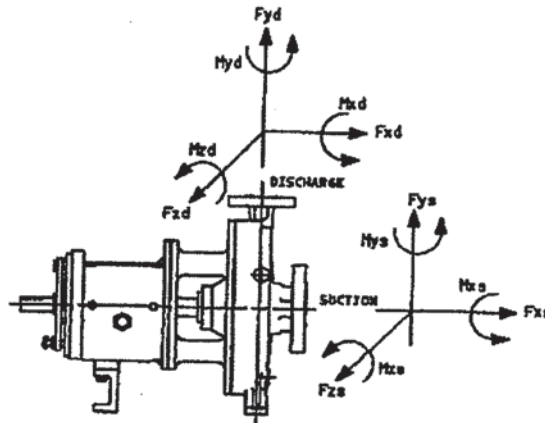
Customer: BUNGE-ERGON VICKSBURG LLC
Goulds Serial No: A734F823
Customer P.O. No: 4500145890
Item No: PC-3201
Service: PRIMARY SCRUBBER PUMP
Owner: BUNGE-ERGON VICKSBURG, LLC
Project: BUNGE-ERGON
Job#: 61310

Drawing No. FLC3196
Page 1 of 2

725.1A400

June 9, 2000
(Sup. 8/13/99)

MAXIMUM ALLOWABLE FLANGE LOADS ON GOULDS END SUCTION PUMPS (Model 3196)



Terms:

$F_{xs}, F_{ys}, F_{zs}, F_{xd}, F_{yd}, F_{zd}$
 $M_{xs}, M_{ys}, M_{zs}, M_{xd}, M_{yd}, M_{zd}$
 F_t
 F_c
 $F_{max}, F_{amax}, M_{max}, M_{bmax}$

Applied forces as shown in Figure 1, units in lbs.

Applied moments as shown in Figure 1, units in ft-lbs.

Tensile force on discharge (F_{yd} if $F_{yd} \geq 0, 0$ if $F_{yd} < 0$), units in lbs.

Compressive force on discharge ($-F_{yd}$ if $F_{yd} < 0, 0$ if $F_{yd} \geq 0$), units in lbs.

Constants dependent on pump size & flange (Tables 1-8)

(When no entry is found in tables, equations using these constants may be disregarded.)

Loads applied to flanges must meet the following criteria:

Suction:

Discharge:

$$(1) \frac{\sqrt{F_{xs}^2 + F_{ys}^2 + F_{zs}^2}}{F_{max}} + \frac{\sqrt{M_{xs}^2 + M_{ys}^2 + M_{zs}^2}}{M_{max}} \leq 1$$

$$(1) \frac{\sqrt{F_{xd}^2 + F_t^2 + F_{zd}^2}}{F_{max}} + \frac{\sqrt{M_{xd}^2 + M_{yd}^2 + M_{zd}^2}}{M_{max}} \leq 1$$

$$(2) \frac{\sqrt{F_{xs}^2 + F_{ys}^2 + F_{zs}^2}}{F_{amax}} + \frac{\sqrt{M_{xs}^2 + M_{ys}^2 + M_{zs}^2}}{M_{bmax}} \leq 1$$

$$(2) \frac{\sqrt{F_{xd}^2 + F_t^2 + F_{zd}^2}}{F_{amax}} + \frac{\sqrt{M_{xd}^2 + M_{yd}^2 + M_{zd}^2}}{M_{bmax}} \leq 1$$

$$(3) \frac{|F_{xs}|}{.85 F_{max}} + \frac{\sqrt{M_{ys}^2 + M_{zs}^2}}{.64 M_{max}} \leq 1$$

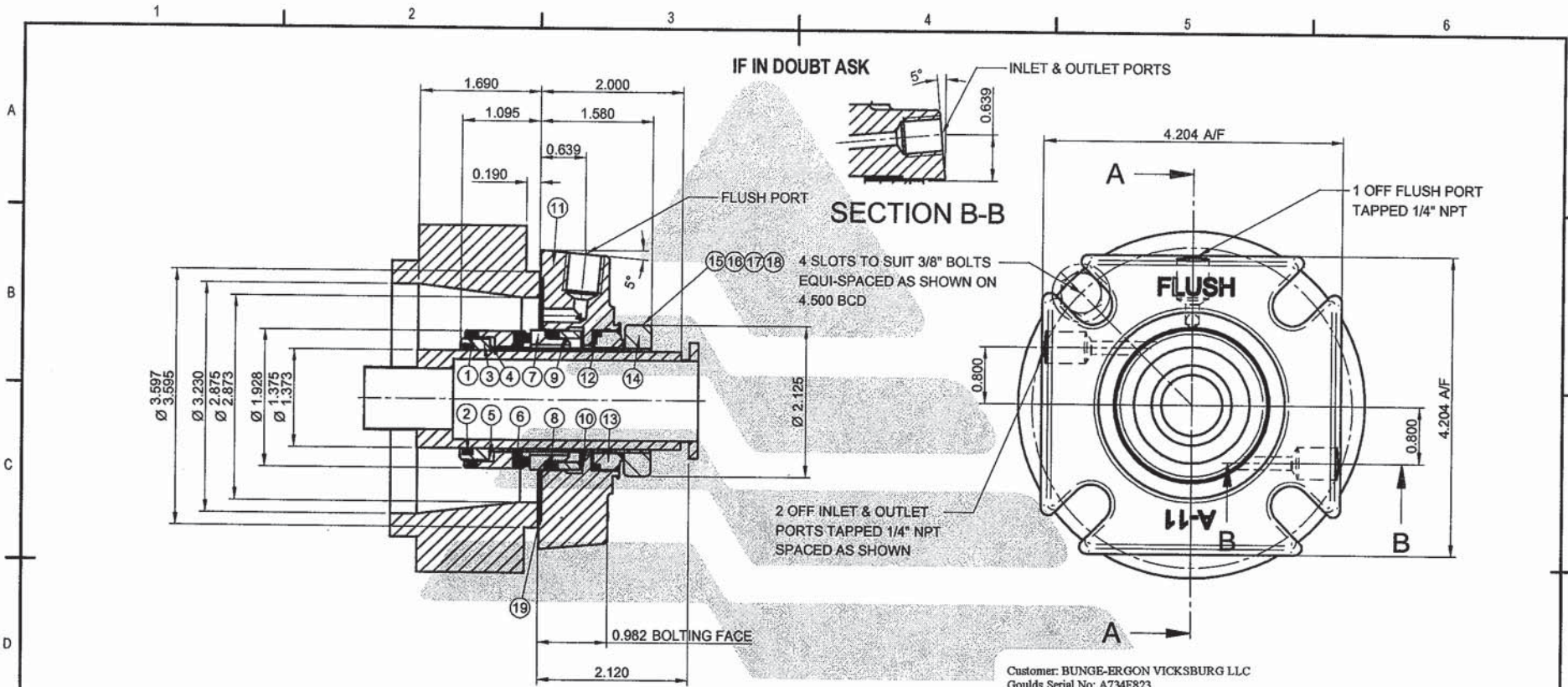
$$(3) \frac{F_t}{.85 F_{max}} + \frac{\sqrt{M_{xd}^2 + M_{zd}^2}}{.64 M_{max}} \leq 1$$

$$(4) \frac{|F_{xs}|}{.85 F_{amax}} + \frac{\sqrt{M_{ys}^2 + M_{zs}^2}}{.64 M_{bmax}} \leq 1$$

$$(4) \frac{F_t}{.85 F_{amax}} + \frac{\sqrt{M_{xd}^2 + M_{zd}^2}}{.64 M_{bmax}} \leq 1$$

$$(5) F_c \leq F_{max}$$

Customer: BUNGE-ERGON VICKSBURG LLC
Goulds Serial No: A734F823
Customer P.O. No: 4500145890
Item No: PC-3201
Service: PRIMARY SCRUBBER PUMP
Owner: BUNGE-ERGON VICKSBURG, LLC
Project: BUNGE-ERGON
Job#: 61310



ITEM	DESCRIPTION	QTY	MATERIAL
1	ROTARY O RING	1	AFLAS
2	SLEEVE O RING	1	AFLAS
3	CARTRIDGE SLEEVE	1	316L STAINLESS STEEL
4	SPRINGS	8	HASTELLOY C
5	ROTARY DRIVE PINS	2	STAINLESS STEEL
6	ROTARY FACE	1	CARB
7	STATIONARY FACE	1	TC
8	STATIONARY O RING	1	AFLAS
9	UNIVERSAL PIVOT RING	1	316L STAINLESS STEEL
10	GLAND PINS	2	STAINLESS STEEL
11	GLAND	1	316 STAINLESS STEEL
12	R'BUSH O RING	1	VITON
13	RESTRICTION BUSH	1	CARBON
14	CLAMP RING	1	316L STAINLESS STEEL
15	DRIVE SCREWS	3	STAINLESS STEEL
16	CLIP SCREWS	4	STAINLESS STEEL
17	SETTING CLIPS	4	METAL
18	ANTI-TAMPER SCREWS	2	STAINLESS STEEL
19	GASKET	1	AF1

CUSTOMER	Bunge Ergon	CHEMICAL	Water	DISCHARGE PRESSURE	32.5
CUSTOMER PO No	4500145890	TEMPERATURE	100 F	STUFFING BOX PRESSURE	
OEM	ITT GOULDS	SPEED	3520 RPM	VISCOSITY	1.000 cP
OEM PO No	457128	SUCTION PRESSURE		SPECIFIC GRAVITY	0.990
TAG No	734F823SL	ASSEMBLY REFERENCE	ABCT11AV01-A	RE-ORDER REFERENCE	MKSTW-2-AES-88

EITHER THE ASSEMBLY REFERENCE OR THE RE-ORDER REFERENCE CAN BE USED FOR SEAL RE-ORDER

UNSPECIFIED TOLERANCES		PROJECTION 3RD ANGLE UNITS INCHES UCS	AESSEAL plc BRUNNENSH BUSINESS PARK MILL CLOSE, TEARLEBOROUGH ROTHBAM S40 1BZ	TITLE 1.375 ANSI+ CURC SEAL ARRANGEMENT SUITS 3196 ST & STX TAPER BORE GOULDS PUMP
LINEAR: +/- 0.01" (0.25mm)	ANGULAR: +/- 30°			
SURFACE FINISH: 63 min (1.6 mm)		SCALE: 1:1	DRAWN: Andrew Colverson CHECK: Alan Roddla	DATE: 02/02/00 SIG: Andrew Colverson

NOTE THE DRAWING NUMBER CANNOT BE USED TO RE-ORDER



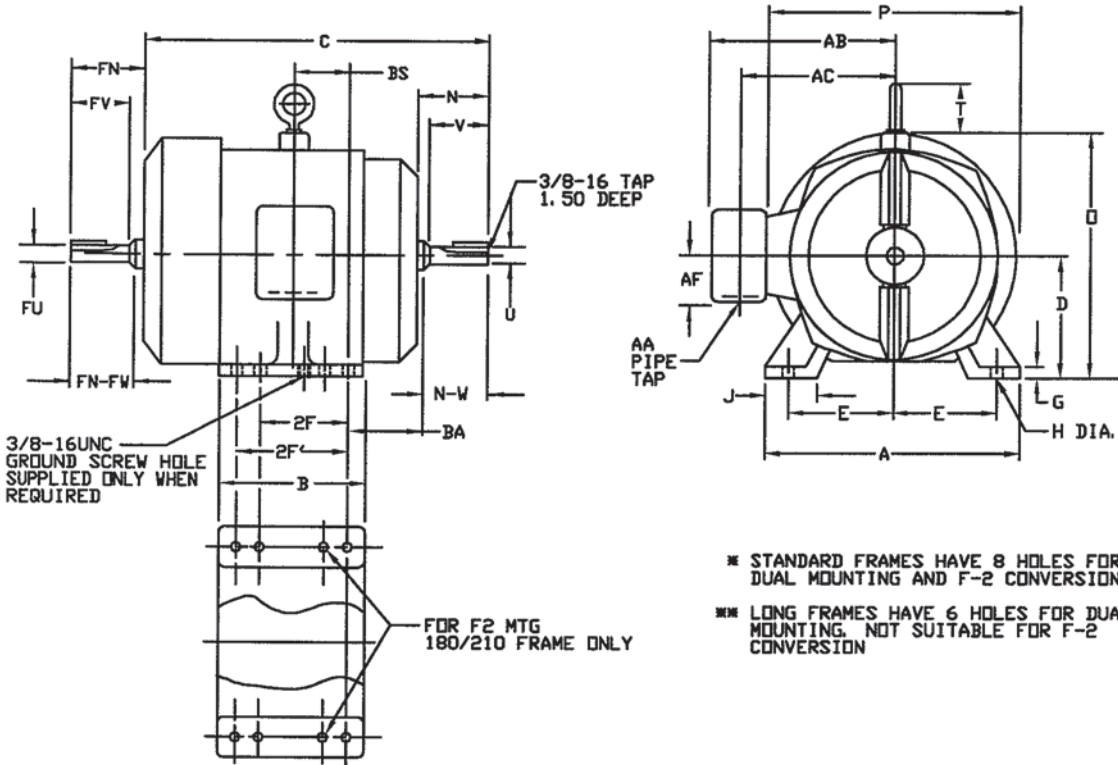
DUTY MASTER ALTERNATING CURRENT MOTORS

SQUIRREL-CAGE INDUCTION
X/T CONSTRUCTION

ENCLOSURE: TOTALLY ENCLOSED
MOUNTING: FOOT

COOLING: FAN COOLED

FRAMES 180T THRU 210T



- * STANDARD FRAMES HAVE 8 HOLES FOR DUAL MOUNTING AND F-2 CONVERSION
- ** LONG FRAMES HAVE 6 HOLES FOR DUAL MOUNTING. NOT SUITABLE FOR F-2 CONVERSION

DIMENSIONS ARE IN INCHES; SEE SHT 2 FOR DIMENSIONS IN MILLIMETERS.

FRAME	A	D(3)	E	G	H	J	O	P	T	CAST IRON TERMINAL BOX				ONE SIZE LARGER CAST IRON TERMINAL BOX (5)				
										AA	AB	AC	AF	AA	AB	AC	AF	BA
180T-180T	9.00	4.50	3.75	.44	.44	1.75	9.88	9.50	2.00	1	8.44	6.69	2.12	1-1/4	8.94	6.94	2.50	2.75
210T-L210T	10.50	5.25	4.25	.44	.44	2.00	11.25	11.00	2.00	1	9.31	7.56	2.12	1-1/4	9.81	7.81	2.50	3.50

FRAME SIZE	FOOT MTG PROV	C	BS	B	2F	2F'	B.E. SHAFT AND KEY				FRONT END SHAFT AND KEY				WEIGHT LBS. (4)				
							N	N-W	UK(2)	V	SQ.	LGTH	FN	FN-FW		FUK(2)	FV	SQ.	LGTH
180T	182T	15.62	2.75	7.00	4.50	5.50	3.00	2.75	1.1250	2.50	.250	1.75	3.12	2.25	.8750	2.00	.188	1.38	86
	184T																		91
L180T	L182T	17.12	3.50	8.50	4.50	5.50	3.00	2.75	1.1250	2.50	.250	1.75	3.12	2.25	.8750	2.00	.188	1.38	116
	L184T																		121
210T	213T	19.31	3.50	8.50	5.50	7.00	3.62	3.38	1.3750	3.12	.312	2.38	3.75	2.75	1.1250	2.50	.250	1.75	135
	215T																		145
L210T	L213T	20.19	3.94	9.12	5.50	7.00	3.62	3.38	1.3750	3.12	.312	2.38	3.75	2.75	1.1250	2.50	.250	1.75	175
	L215T																		185

- <1> SPECIAL DIMENSIONS ON THIS LINE
- <2> "U" AND "FU" MAY VARY +.0000, -.0005
- <3> "D" MAY VARY +.00, -.03
- <4> MOTOR WEIGHTS MAY VARY BY 15% FOR NON-STANDARD RATINGS.
- <5> ONE SIZE LARGER TERMINAL BOX SUPPLIED ONLY WHEN SPECIFIED.

STANDARD DOUBLE SHAFT SUPPLIED ONLY WHEN SPECIFIED.

TERMINAL BOX LOCATED ON OPPOSITE SIDE WHEN F-2, W-1, W-4, W-5, W-7 OR C-1 MOUNTING IS SPECIFIED.

MAXIMUM PERMISSIBLE SHAFT RUNOUT WHEN MEASURED AT END OF STANDARD SHAFT EXTENSION IS .002 T. I. R.

IF MOUNTING CLEARANCE DETAILS ARE REQUIRED, CONSULT FACTORY.

FRAME _____ TYPE _____ CERTIFIED FOR _____
 ORDER _____ ITEM _____ HP _____ RPM _____ PH _____ HZ _____ VOLTS _____
 RELIANCE SALES ORDER _____ APPROVED BY _____ DATE _____

RELIANCE ELECTRIC
CLEVELAND, OHIO 44117 U. S. A.

DR. BY K. ENGLISH
 CK. BY R. L. BROWN
 APP. BY G. KILBORN
 DATE 12-18-85

DIMENSION SHEET 613051-501
 SHEET 1 OF 2 ISSUE DATE: SEPTEMBER 2, 1995
 7373270

Customer: BUNGE-ERGON VICKSBURG LLC
 Goulds Serial No: A734F823
 Customer P.O. No: 4500145890
 Item No: PC-3201
 Service: PRIMARY SCRUBBER PUMP
 Owner: BUNGE-ERGON VICKSBURG, LLC
 Project: BUNGE-ERGON
 Job#: 61310

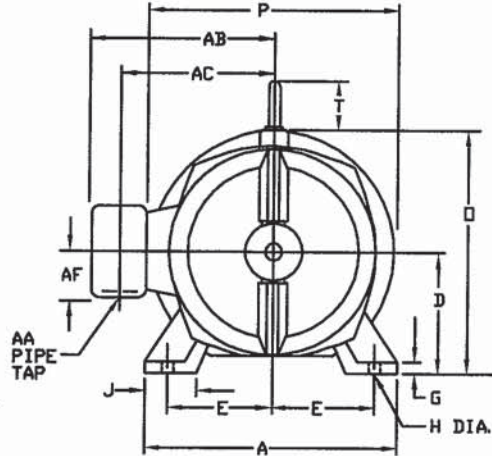
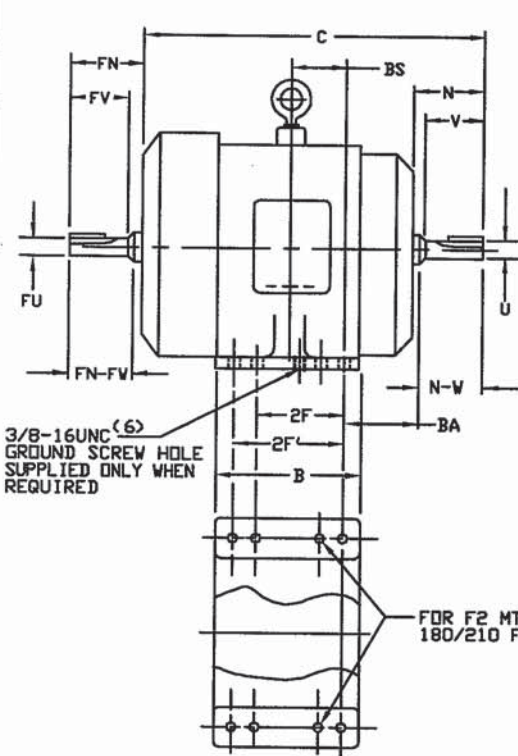
DUTY MASTER ALTERNATING CURRENT MOTORS

SQUIRREL-CAGE INDUCTION
X/T CONSTRUCTION

ENCLOSURE: TOTALLY ENCLOSED
MOUNTING: FOOT

COOLING: FAN COOLED

FRAMES 180T THRU 210T



* STANDARD FRAMES HAVE 8 HOLES FOR
DUAL MOUNTING AND F-2 CONVERSION

** LONG FRAMES HAVE 6 HOLES FOR DUAL
MOUNTING. NOT SUITABLE FOR F-2
CONVERSION

DIMENSIONS ARE IN MILLIMETERS; SEE SH1 FOR DIMENSIONS IN INCHES.

FRAME	A	D(3)	E	G	H	J	O	P	T	CAST IRON TERMINAL BOX				ONE SIZE LARGER CAST IRON TERMINAL BOX (5)				
										AA(6)	AB	AC	AF	AA(6)	AB	AC	AF	
180T-L180T	228.6	114.3	95.3	111.2	11.2	44.5	251.0	241.3	50.8	1	214.4	169.9	53.8	1-1/4	227.1	176.3	63.5	69.9
210T-L210T	266.7	133.4	108.0	111.2	11.2	50.8	285.8	279.4	50.8	1	236.5	192.0	53.8	1-1/4	249.2	198.4	63.5	88.9

FRAME SIZE	FOOT MTG PRDV	C	BS	B	2F	2F'	R. E. SHAFT AND KEY					FRONT END SHAFT AND KEY					WEIGHT KGS. (4)		
							N	N-W	UK(2)	V	SG.	LGTH	FN	FN-FW	FK(2)	FV		SG.	LGTH
180T	182T *	396.7	69.9	177.8	114.3	139.7	76.2	69.9	28.575	63.5	6.35	44.5	79.2	57.2	22.225	50.8	4.78	35.1	39
	184T *																		
L180T	L182T **	434.8	88.9	215.6	114.3	139.7	76.2	69.9	28.575	63.5	6.35	44.5	79.2	57.2	22.225	50.8	4.78	35.1	53
	L184T **																		
210T	213T *	490.5	88.9	215.6	139.7	177.8	91.9	85.9	34.925	79.2	7.92	60.5	95.3	69.9	28.575	63.5	6.35	44.5	61
	215T *																		
L210T	L213T **	512.8	100.1	231.6	139.7	177.8	91.9	85.9	34.925	79.2	7.92	60.5	95.3	69.9	28.575	63.5	6.35	44.5	79
	L215T **																		

- (1) SPECIAL DIMENSIONS ON THIS LINE
- (2) 'U' AND 'FU' MAY VARY +.0000, -.0127 mm
- (3) 'D' MAY VARY +.00, -.76 mm
- (4) MOTOR WEIGHTS MAY VARY BY 15% FOR NON-STANDARD RATINGS.
- (5) ONE SIZE LARGER TERMINAL BOX SUPPLIED ONLY WHEN SPECIFIED.
- (6) DIMENSIONS ARE IN INCHES.

STANDARD DOUBLE SHAFT SUPPLIED ONLY
WHEN SPECIFIED.

TERMINAL BOX LOCATED ON OPPOSITE SIDE WHEN F-2, W-1,
W-4, W-5, W-7 OR C-1 MOUNTING IS SPECIFIED.

MAXIMUM PERMISSIBLE SHAFT RUNOUT WHEN MEASURED AT
END OF STANDARD SHAFT EXTENSION IS .050 mm T. I. R.

IF MOUNTING CLEARANCE DETAILS ARE REQUIRED, CONSULT
FACTORY.

FRAME-_____ TYPE-_____ CERTIFIED FOR-_____
 ORDER-_____ ITEM _____ HP-_____ RPM-_____ PH-_____ HZ-_____ VOLTS _____
 RELIANCE SALES ORDER-_____ APPROVED BY-_____ DATE-_____



CLEVELAND, OHIO 44117 U. S. A.

DR. BY K. ENGLISH
 CK. BY R. L. BROWN
 APP. BY G. KILBORN
 DATE 12-18-85

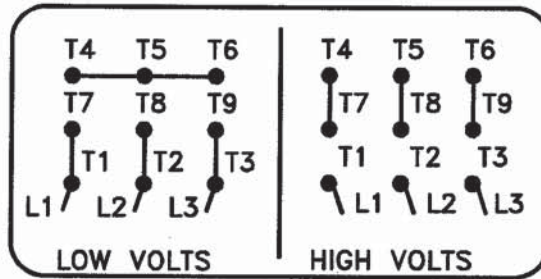
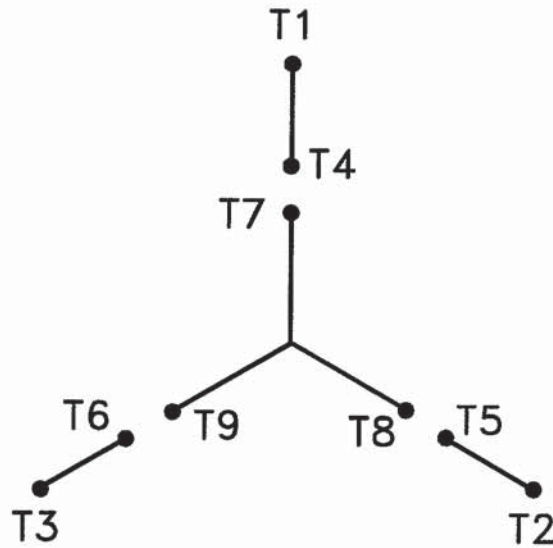
DIMENSION
SHEET
SHEET 2 OF 2

613051-501

ISSUE DATE: SEPTEMBER 2, 1995

Customer: BUNGE-ERGON VICKSBURG LLC
 Coultis Serial No: A74F823
 Customer P.O. No: 4500145890
 Item No: FC-3321
 Service: PRIMARY SCRUBBER PUMP
 Owner: BUNGE-ERGON VICKSBURG, LLC
 Project: BUNGE-ERGON
 Job#: 61310

A-C MOTOR CONNECTION DIAGRAM STANDARD 9 LEAD Y CONNECTED



(N.P. 1575-A)

Customer: BUNGE-ERGON VICKSBURG LLC
 Goulds Serial No: A734F823
 Customer P.O. No: 4500145890
 Item No: PC-3201
 Service: PRIMARY SCRUBBER PUMP
 Owner: BUNGE-ERGON VICKSBURG, LLC
 Project: BUNGE-ERGON
 Job#: 61310

CUSTOMER _____ CUSTOMER ORDER NO. _____ RELIANCE S.O. NO. _____



CLEVELAND, OHIO 44117 RAG

DR. BY N.W.
 CK. BY D.C.Y.
 APP. BY H.E.J.
 DATE 03/05/76

CONNECTION
DIAGRAM

416820-1

ISSUE DATE JUNE 15, 1976

C/R

REL. S.O.	FRAME	HP	TYPE	PHASE/ HERTZ	RPM	VOLTS
	213T	7.5	P	3/60	3520	230/460
AMPS	DUTY	AMB °C/ INSUL.	S.F.	NEMA DESIGN	CODE LETTER	ENCL.
17.2/8.6	CONT	40/F	1.15	B	H	TEFC-XE
E/S	ROTOR	TEST S.O.	TEST DATE	STATOR RES. @ 25 °C OHMS (BETWEEN LINES)		
537084	418425-7AE	---	---	.440/1.76		

PERFORMANCE

LOAD	HP	AMPERES	RPM	% POWER FACTOR	% EFFICIENCY
NO LOAD	0	2.6	3600	9.30	0
1/4	1.88	3.3	3581	61.3	86.7
2/4	3.75	4.8	3562	80.9	90.6
3/4	5.63	6.6	3541	87.4	90.9
4/4	7.50	8.6	3519	90.1	90.2
5/4	9.37	10.8	3495	91.7	89.0

SPEED TORQUE

	RPM	TORQUE % FULL LOAD	TORQUE LB.-FT.	AMPERES
LOCKED ROTOR	0	201	22.6	62.0
PULL UP	360	188	21.0	61.2
BREAKDOWN	3013	331	37.0	42.1
FULL LOAD	3519	100	11.2	8.6

AMPERES SHOWN FOR 460. VOLT CONNECTION. IF OTHER VOLTAGE CONNECTIONS ARE AVAILABLE, THE AMPERES WILL VARY INVERSELY WITH THE RATED VOLTAGE

REMARKS: TYPICAL DATA
XE MOTOR - NEMA NOM. EFF. 90.2%



DR. BY D. M. BYRD
 CK. BY C. E. JAMISON
 APP. BY D. M. BYRD
 DATE 05/02/03

A-C MOTOR
PERFORMANCE E02450-C-J002
DATA ISSUE DATE 05/02/03

Customer: BUNGE-ERCON VICKSBURG LLC
 Goulds Serial No: A724F823
 Customer P.O. No: 4500145890
 Item No: PC-3201
 Service: PRIMARY SCRUBBER PUMP
 Owner: BUNGE-ERCON VICKSBURG, LLC
 Project: BUNGE-ERCON
 Job#: 61310