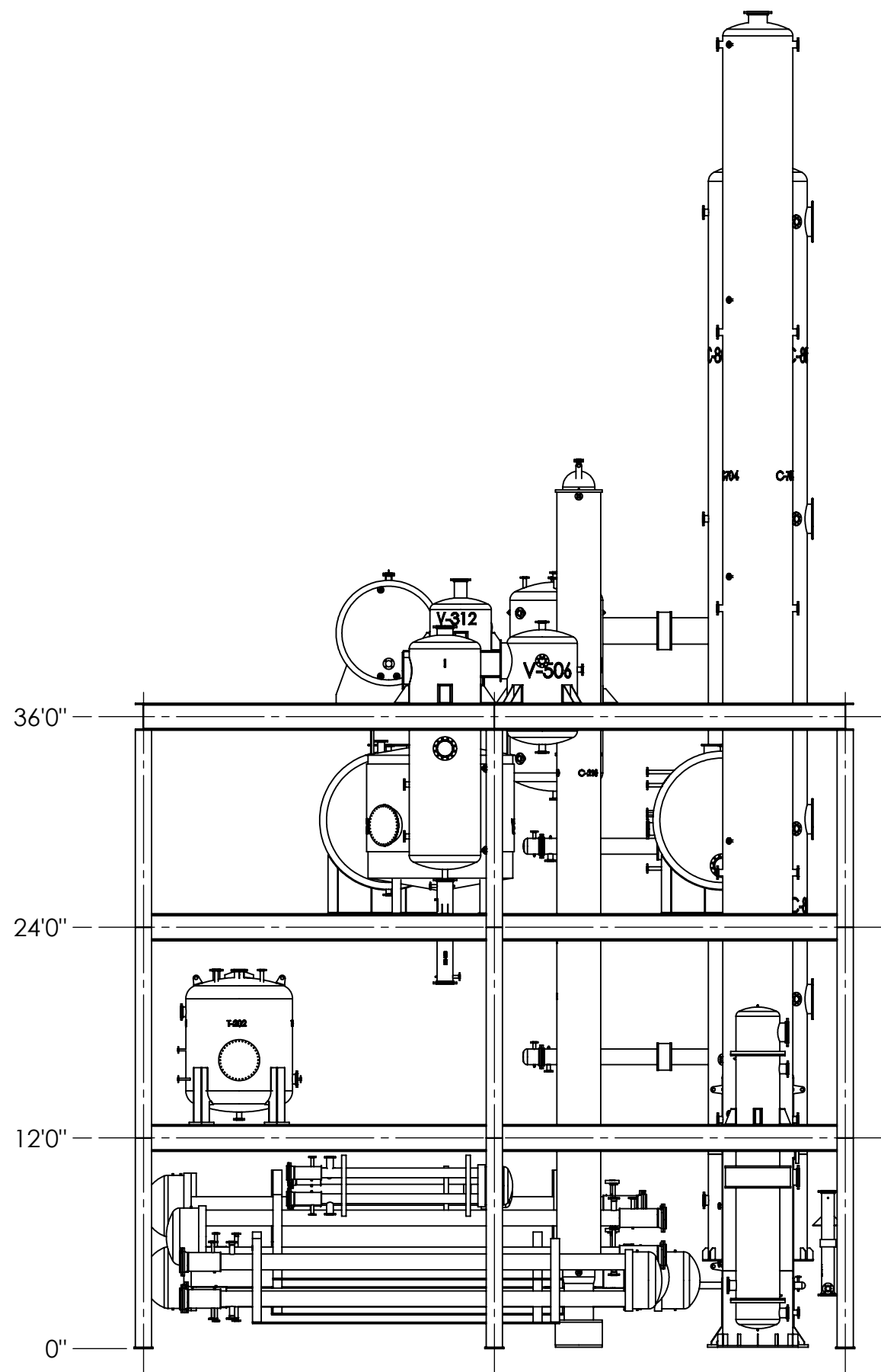
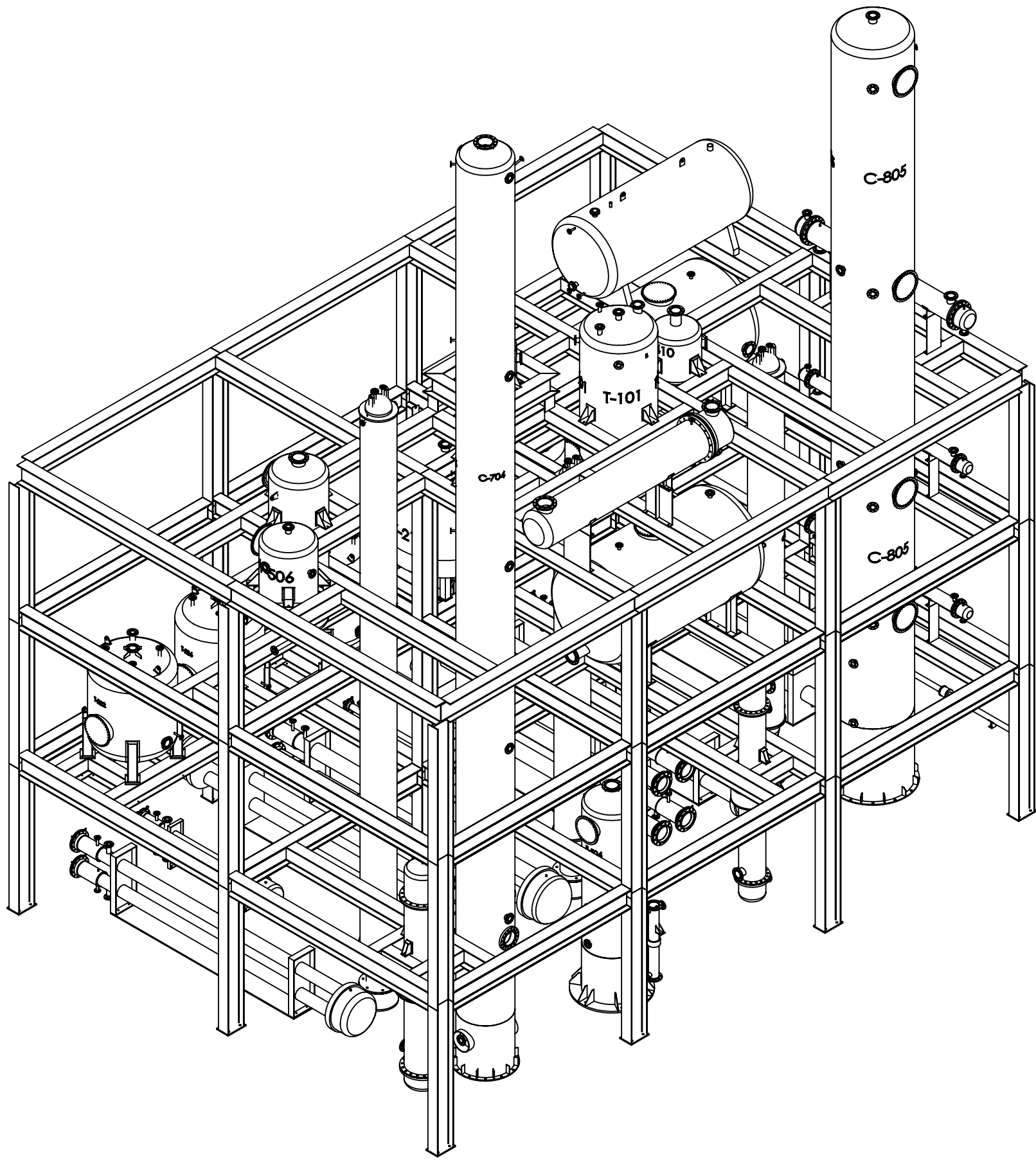
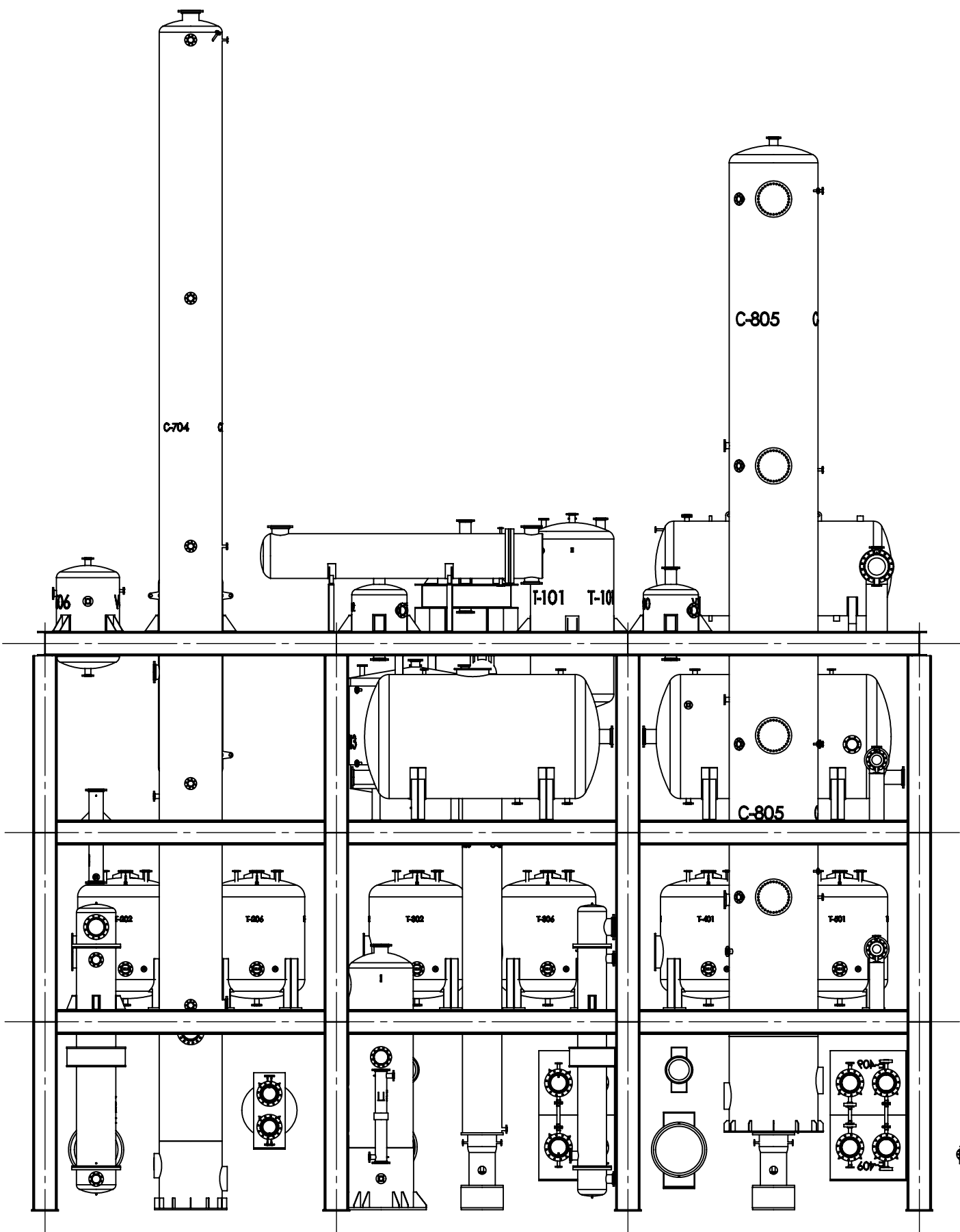


SCALE 1 : 100



SCALE 1 : 100



SCALE 1 : 100

| ITEM NO. | PART NUMBER | QTY. |
|----------|--------------------|------|
| 1 | Process Structure | 1 |
| 2 | V-313_ | 1 |
| 3 | T-101 | 1 |
| 4 | V-212 | 1 |
| 5 | V-312 | 1 |
| 6 | F-106 | 1 |
| 7 | V-506 | 1 |
| 8 | V-213 | 1 |
| 9 | C-408 | 1 |
| 10 | C-310 | 1 |
| 11 | C-210 | 1 |
| 12 | C-704 | 1 |
| 13 | V-410 | 1 |
| 14 | HE-105 | 1 |
| 15 | E-208 | 1 |
| 16 | E-209 | 1 |
| 17 | H-211 | 1 |
| 18 | E-308 | 1 |
| 19 | HE-309 | 1 |
| 20 | E-311 | 1 |
| 21 | H-406 | 1 |
| 22 | E-407 | 1 |
| 23 | E-409 | 1 |
| 24 | HE-503_ | 1 |
| 25 | H-706_ | 1 |
| 26 | HE-707 | 1 |
| 27 | H-809 | 1 |
| 28 | HE-810 | 1 |
| 29 | F-504 | 1 |
| 30 | C-805 | 1 |
| 31 | V-411_ | 1 |
| 32 | HE_802 | 1 |
| 33 | HE_803 | 1 |
| 34 | HE_804 | 1 |
| 35 | T_306_ | 1 |
| 36 | T_206_ | 1 |
| 37 | T_302_ | 1 |
| 38 | T-401_ | 1 |
| 39 | T-501_ | 1 |
| 40 | T_202_ | 1 |
| 41 | Saddle_01 | 2 |
| 42 | Saddle_02 | 2 |
| 43 | Saddle_03 | 2 |
| 44 | Saddle-05 | 2 |
| 45 | STDET-60-1600_3500 | 1 |