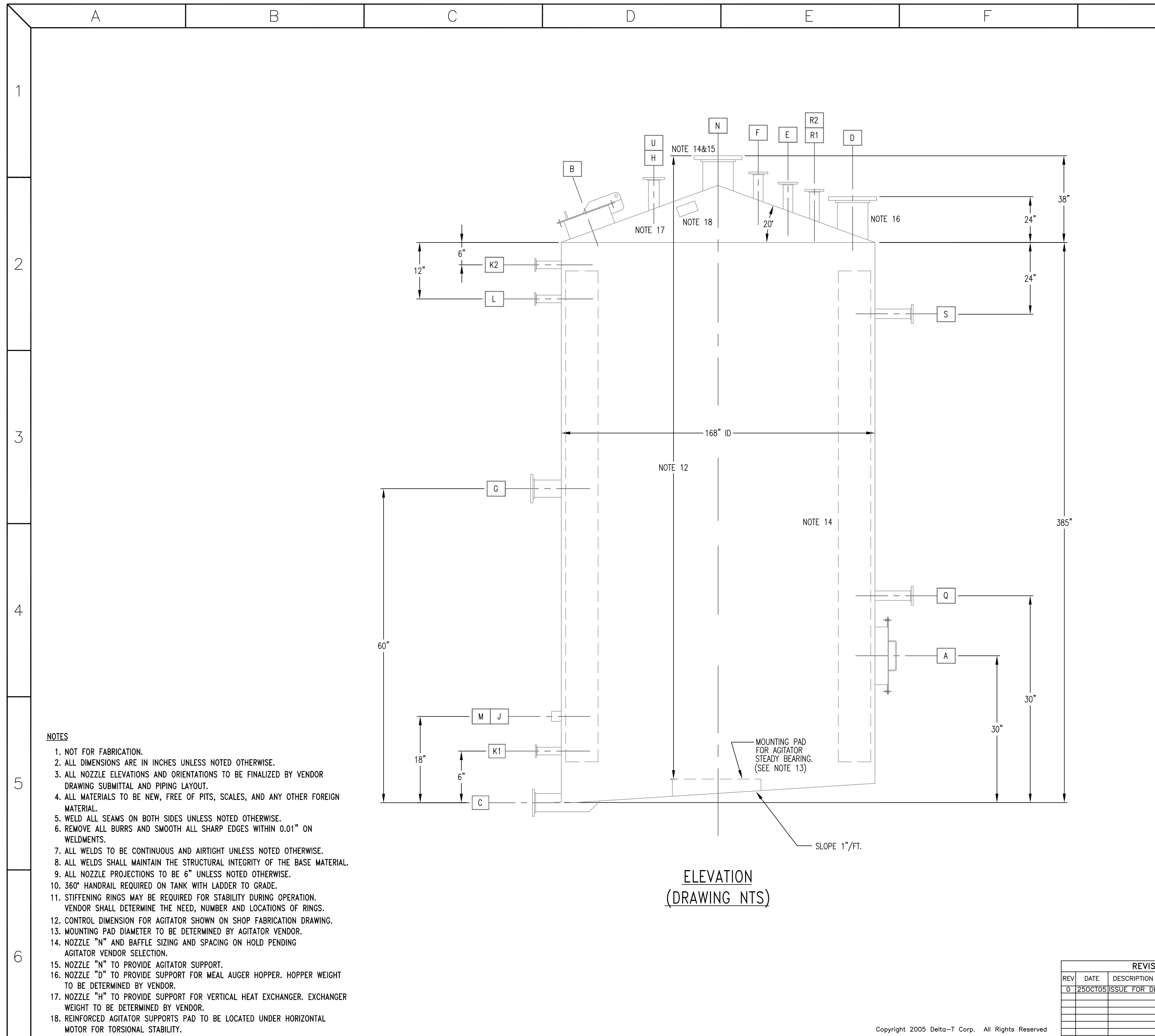


**TANK DATA**

D E S I G N	TAG NUMBER:	TK-2101	L2348
	DESCRIPTION:	SLURRY MIX TANK	REV A
	P&ID NUMBER:	61310-PI-2101	
	FABRICATION TYPE:	SHOP FABRICATED, VERTICAL	
	NATL BOARD STAMP:	N/A	
	CODE:	API 650	
	CODE STAMP:	NO	
	EARTHQUAKE FACTOR:	PER DELTA-T SPEC 61310-SITECOND-001	
	BASIC WIND SPEED:	PER DELTA-T SPEC 61310-SITECOND-001	
	OPERATING PRESSURE:	PSIG 0.5	
	OPERATING TEMPERATURE:	°F 190	
	DESIGN PRESSURE:	"H2O VAC / PSIG 5" / 2.5	
	DESIGN TEMPERATURE: (MIN/MAX)	°F -5 / 300	
	VOLUME, NOMINAL	GAL 31,500	
	VOLUME, TOTAL	GAL 37,000	
FLUID SPECIFIC GRAVITY:	0.90		
EMPTY WEIGHT:	LB. 12,881		
FLOODED WEIGHT:	LB. 320,583		
M A T E R I A L	BOTTOM:	A240 TP 304	
	SHELL:	A240 TP 304	
	ROOF:	A240 TP 304	
	INTERNAL STEEL:	A240 TP 304	
	EXTERNAL STEEL:	A 36 CS	
	INTERNAL PIPING:	A240 TP 304	
	NOZZLES: (FLANGES)	A182 TP 304	
	(NECKS)	A312 TP 304	
	MANHOLE NOZZLE:	A312 TP 304	
	MANHOLE COVER:	A182 TP 304	
	COUPLINGS:	A312 TP 304	
	BOLTS NUTS:	A193 GR. B7 / A194 GR. 2H	
	GASKETS:	ANSI B16.5 GASKET, GARLOCK 3000, PTFE OR EQUAL, OR EPDM	
ELECTRODES:	ER308L / E308L		
CORROSION ALLOWANCE:	NONE		
M I S C	STRESS RELIEF:	N/A	
	GRINDING:	N/A	
	SURFACE PREP. INT.:	N/A	
	SURFACE PREP. EXT.:	N/A	
	PAINT INTERIOR:	N/A	
	PAINT EXTERIOR:	N/A	
	INSULATION:	3" FIBERGLASS OR MINERAL WOOL	BY OTHERS
D A T A	CLEANING:	N/A	
T E S T I N G	HYDROSTATIC TESTING:	YES	
	RADIOGRAPHY	NONE	

**NOZZLE SCHEDULE**

MK	SIZE	SERVICE	RATING	TYPE	QTY
A	24"	MANWAY	API 650 STD.	S.O.R.F. FLG w/COVER, HINGE	1
B	20"	HATCH	API 650 STD.	S.O.R.F. FLG w/COVER, HINGE	1
C	14"	SLURRY OUTLET	CLASS 150	S.O.R.F. FLG	1
D	24"	GROUND CORN INLET	CLASS 150	S.O.R.F. FLG	1
E	2"	SUMP RETURN	CLASS 150	S.O.R.F. FLG	1
F	6"	TK-2201 RECYCLE	CLASS 150	S.O.R.F. FLG	1
G	6"	CONDENSATE INLET	CLASS 150	S.O.R.F. FLG	1
H	6"	VENT	CLASS 150	S.O.R.F. FLG	1
J	16"	AGITATOR	CLASS 150	S.O.R.F. FLG	1
K1, K2	3"	LEVEL TRANSMITTER	CLASS 150	S.O.R.F. FLG	2
L	2"	LEVEL SWITCH	3000#	HALF CPLG., NPTF	1
M	3/4"	TE	3000#	HALF CPLG., NPTF	1
N	3/4"	TI	3000#	HALF CPLG., NPTF	1
Q	3"	STEAM INLET	CLASS 150	S.O.R.F. FLG	1
R	8"	CIP INLET	CLASS 150	S.O.R.F. FLG	1
S	3"	THIN STILLAGE INLET	CLASS 150	S.O.R.F. FLG	1
U	6"	OVERFLOW	CLASS 150	S.O.R.F. FLG	1



ELEVATION  
(DRAWING NTS)

- NOTES**
- NOT FOR FABRICATION.
  - ALL DIMENSIONS ARE IN INCHES UNLESS NOTED OTHERWISE.
  - ALL NOZZLE ELEVATIONS AND ORIENTATIONS TO BE FINALIZED BY VENDOR DRAWING SUBMITTAL AND PIPING LAYOUT.
  - ALL MATERIALS TO BE NEW, FREE OF PITS, SCALES, AND ANY OTHER FOREIGN MATERIAL.
  - WELD ALL SEAMS ON BOTH SIDES UNLESS NOTED OTHERWISE.
  - REMOVE ALL BURRS AND SMOOTH ALL SHARP EDGES WITHIN 0.01" ON WELDMENTS.
  - ALL WELDS TO BE CONTINUOUS AND AIRTIGHT UNLESS NOTED OTHERWISE.
  - ALL WELDS SHALL MAINTAIN THE STRUCTURAL INTEGRITY OF THE BASE MATERIAL.
  - ALL NOZZLE PROJECTIONS TO BE 6" UNLESS NOTED OTHERWISE.
  - 360° HANDRAIL REQUIRED ON TANK WITH LADDER TO GRADE.
  - STIFFENING RINGS MAY BE REQUIRED FOR STABILITY DURING OPERATION. VENDOR SHALL DETERMINE THE NEED, NUMBER AND LOCATIONS OF RINGS.
  - CONTROL DIMENSION FOR AGITATOR SHOWN ON SHOP FABRICATION DRAWING.
  - MOUNTING PAD DIAMETER TO BE DETERMINED BY AGITATOR VENDOR.
  - NOZZLE "N" AND BAFFLE SIZING AND SPACING ON HOLD PENDING AGITATOR VENDOR SELECTION.
  - NOZZLE "N" TO PROVIDE AGITATOR SUPPORT.
  - NOZZLE "D" TO PROVIDE SUPPORT FOR MEAL AUGER HOPPER. HOPPER WEIGHT TO BE DETERMINED BY VENDOR.
  - NOZZLE "H" TO PROVIDE SUPPORT FOR VERTICAL HEAT EXCHANGER. EXCHANGER WEIGHT TO BE DETERMINED BY VENDOR.
  - REINFORCED AGITATOR SUPPORTS PAD TO BE LOCATED UNDER HORIZONTAL MOTOR FOR TORSIONAL STABILITY.

TANK DATA	
TAG NUMBER:	TK-2101
DESCRIPTION:	SLURRY MIX TANK
P&ID NUMBER:	61310-PI-2101
FABRICATION TYPE:	SHOP FABRICATED, VERTICAL
NAT'L BOARD STAMP:	N/A
CODE:	API 650
CODE STAMP:	NO
EARTHQUAKE FACTOR:	PER DELTA-T SPEC 61310-SITECOND-001
BASIC WIND SPEED:	PER DELTA-T SPEC 61310-SITECOND-001
OPERATING TEMPERATURE:	°F 190
OPERATING PRESSURE:	PSIG 0.5
DESIGN TEMPERATURE:	*H2O VAC / PSIG 5" / 2.5
DESIGN TEMPERATURE (MIN/MAX):	°F -5 / 300
VOLUME, NOMINAL:	GAL 31,500
VOLUME, TOTAL:	GAL 37,000
FLUID SPECIFIC GRAVITY:	0.90
EMPTY WEIGHT:	LB. N/A
FLOODED WEIGHT:	LB. N/A
BOTTOM:	A240 TP 304
SHELL:	A240 TP 304
ROOF:	A240 TP 304
INTERNAL STEEL:	A240 TP 304
EXTERNAL STEEL:	A 36 CS
INTERNAL PIPING:	A240 TP 304
NOZZLES: (FLANGES):	A182 TP 304
(NECKS):	A312 TP 304
MANHOLE NOZZLE:	A312 TP 304
MANHOLE COVER:	A182 TP 304
COUPLINGS:	A312 TP 304
BOLTS NUTS:	A193 GR. B7 / A194 GR. 2H
GASKETS:	ANSI B16.5 GASKET, GARLOCK 3000, PTFE OR EQUAL, OR EPDM
ELECTRODES:	ER308L / E308L
CORROSION ALLOWANCE:	NONE
STRESS RELIEF:	N/A
GRINDING:	N/A
SURFACE PREP. INT.:	N/A
SURFACE PREP. EXT.:	N/A
PAINT INTERIOR:	N/A
PAINT EXTERIOR:	N/A
INSULATION:	3" FIBERGLASS OR MINERAL WOOL BY OTHERS
CLEANING:	N/A
HYDROSTATIC TESTING:	YES
RADIOGRAPHY:	NONE

NOZZLE SCHEDULE					
MK	SIZE	SERVICE	RATING	TYPE	QTY
A	24"	MANWAY	API 650 STD.	S.O.R.F. FLG w/COVER, HINGE	1
B	20"	HATCH	API 650 STD.	S.O.R.F. FLG w/COVER, HINGE	1
C	14"	SLURRY OUTLET	CLASS 150	S.O.R.F. FLG	1
D	24"	GROUND CORN INLET	CLASS 150	S.O.R.F. FLG	1
E	2"	SUMP RETURN	CLASS 150	S.O.R.F. FLG	1
F	6"	TK-2201 RECYCLE	CLASS 150	S.O.R.F. FLG	1
G	6"	CONDENSATE INLET	CLASS 150	S.O.R.F. FLG	1
H	6"	VENT	CLASS 150	S.O.R.F. FLG	1
J	16"	AGITATOR	CLASS 150	S.O.R.F. FLG	1
K1, K2	3"	LEVEL TRANSMITTER	CLASS 150	S.O.R.F. FLG	2
L	2"	LEVEL SWITCH	3000#	HALF CPLG., NPTF	1
M	3/4"	TE	3000#	HALF CPLG., NPTF	1
N	3/4"	TI	3000#	HALF CPLG., NPTF	1
Q	3"	STEAM INLET	CLASS 150	S.O.R.F. FLG	1
R	8"	CIP INLET	CLASS 150	S.O.R.F. FLG	1
S	3"	THIN STILLAGE INLET	CLASS 150	S.O.R.F. FLG	1
U	6"	OVERFLOW	CLASS 150	S.O.R.F. FLG	1

Copyright 2005 Delta-T Corp. All Rights Reserved

REVISIONS				
REV	DATE	DESCRIPTION	BY	CHKD APP
0	25OCT05	ISSUE FOR DESIGN	GDB/CE	AS

**Delta-T**  
www.deltatcorp.com  
Voice (757)220-2955 Fax (757)229-1705  
Drawn By: CE Date: 19SEP05

**CONFIDENTIAL**

Dwg No. **61310-Q-TK2101**  
Title **TK-2101  
SLURRY MIX  
TANK**  
Client Information **BUNGE-ERGON VICKSBURG**  
Location **VICKSBURG, MS**

Dwg Name: G:\51693 MIDWEST GRAIN PROCESSING\2D Drawings\Working\Q-Equipment Details\189-Q-TK2101.dwg Updated By: gbyont Oct 27, 2005 - 17:32:30