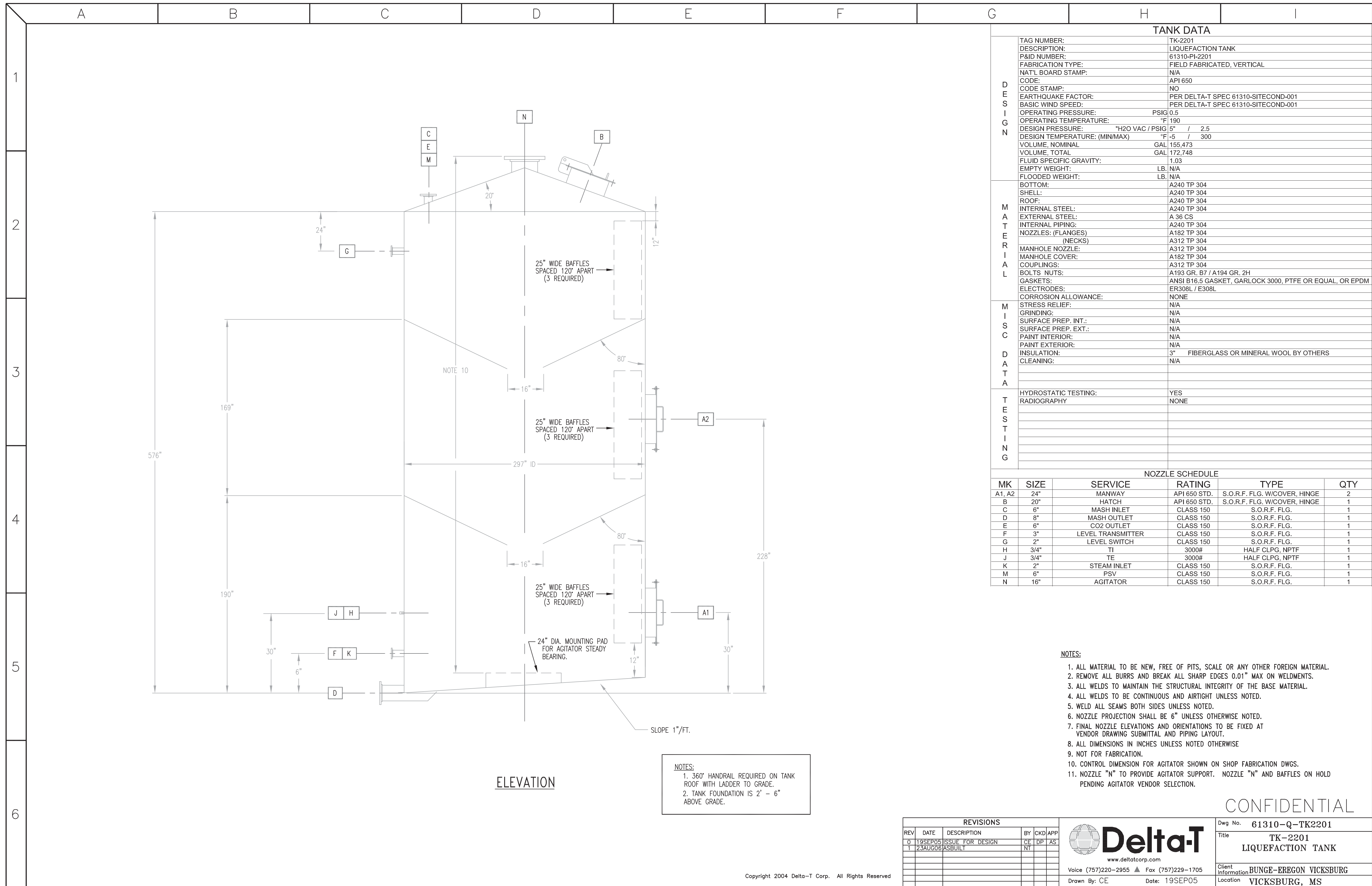


TANK DATA

DESIGN	TAG NUMBER:	TK-2201	L2348
	DESCRIPTION:	LIQUEFACTION TANK	REV. A
	P&ID NUMBER:	61310-PI-2201	
	FABRICATION TYPE:	FIELD FABRICATED, VERTICAL	
	NAT'L BOARD STAMP:	N/A	
	CODE:	API 650	
	CODE STAMP:	NO	
	EARTHQUAKE FACTOR:	PER DELTA-T SPEC 61310-SITECOND-001	
	BASIC WIND SPEED:	PER DELTA-T SPEC 61310-SITECOND-001	
	OPERATING PRESSURE:	PSIG 0.5	
	OPERATING TEMPERATURE:	°F 190	
	DESIGN PRESSURE:	"H2O VAC / PSIG 5" / 2.5	
	DESIGN TEMPERATURE: (MIN/MAX)	°F -5 / 300	
	VOLUME, NOMINAL	GAL 155,473	
	VOLUME, TOTAL	GAL 172,748	
FLUID SPECIFIC GRAVITY:	1.03		
EMPTY WEIGHT:	LB. 55,126		
FLOODED WEIGHT:	LB. 1,542,241		
MATERIAL	BOTTOM:	A240 TP 304	
	SHELL:	A240 TP 304	
	ROOF:	A240 TP 304	
	INTERNAL STEEL:	A240 TP 304	
	EXTERNAL STEEL:	A 36 CS	
	INTERNAL PIPING:	A240 TP 304	
	NOZZLES: (FLANGES)	A182 TP 304	
	(NECKS)	A312 TP 304	
	MANHOLE NOZZLE:	A312 TP 304	
	MANHOLE COVER:	A182 TP 304	
	COUPLINGS:	A312 TP 304	
	BOLTS NUTS:	A193 GR. B7 / A194 GR. 2H	
	GASKETS:	ANSI B16.5 GASKET, GARLOCK 3000, PTFE OR EQUAL, OR EPDM	
ELECTRODES:	ER308L / E308L		
CORROSION ALLOWANCE:	NONE		
MISS	STRESS RELIEF:	N/A	
	GRINDING:	N/A	
	SURFACE PREP. INT.:	N/A	
	SURFACE PREP. EXT.:	N/A	
	PAINT INTERIOR:	N/A	
	PAINT EXTERIOR:	N/A	
	INSULATION:	3" FIBERGLASS OR MINERAL WOOL BY OTHER	
DATA	CLEANING:	N/A	
TESTING	HYDROSTATIC TESTING:	YES	
	RADIOGRAPHY	NONE	

NOZZLE SCHEDULE

MK	SIZE	SERVICE	RATING	TYPE	QTY
A1, A2	24"	MANWAY	API 650 STD.	S.O.R.F. FLG. W/COVER, HINGE	2
B	20"	HATCH	API 650 STD.	S.O.R.F. FLG. W/COVER, HINGE	1
C	6"	MASH INLET	CLASS 150	S.O.R.F. FLG.	1
D	8"	MASH OUTLET	CLASS 150	S.O.R.F. FLG.	1
E	6"	CO2 OUTLET	CLASS 150	S.O.R.F. FLG.	1
F	3"	LEVEL TRANSMITTER	CLASS 150	S.O.R.F. FLG.	1
G	2"	LEVEL SWITCH	CLASS 150	S.O.R.F. FLG.	1
H	3/4"	TI	3000#	HALF CLPG, NPTF	1
J	3/4"	TE	3000#	HALF CLPG, NPTF	1
K	2"	STEAM INLET	CLASS 150	S.O.R.F. FLG.	1
M	6"	PSV	CLASS 150	S.O.R.F. FLG.	1
N	16"	AGITATOR	CLASS 150	S.O.R.F. FLG.	1



ELEVATION

NOTES:
 1. 360° HANDRAIL REQUIRED ON TANK ROOF WITH LADDER TO GRADE.
 2. TANK FOUNDATION IS 2' - 6" ABOVE GRADE.

TANK DATA	
TAG NUMBER:	TK-2201
DESCRIPTION:	LIQUEFACTION TANK
P&ID NUMBER:	61310-PI-2201
FABRICATION TYPE:	FIELD FABRICATED, VERTICAL
NAT'L BOARD STAMP:	N/A
CODE:	API 650
CODE STAMP:	NO
EARTHQUAKE FACTOR:	PER DELTA-T SPEC 61310-SITECOND-001
BASIC WIND SPEED:	PER DELTA-T SPEC 61310-SITECOND-001
OPERATING PRESSURE:	PSIG 0.5
OPERATING TEMPERATURE:	F 190
DESIGN PRESSURE:	"H2O VAC / PSIG 5" / 2.5
DESIGN TEMPERATURE: (MIN/MAX)	F -5 / 300
VOLUME, NOMINAL	GAL 155,473
VOLUME, TOTAL	GAL 172,748
FLUID SPECIFIC GRAVITY:	1.03
EMPTY WEIGHT:	LB. N/A
FLOODED WEIGHT:	LB. N/A
BOTTOM:	A240 TP 304
SHELL:	A240 TP 304
ROOF:	A240 TP 304
INTERNAL STEEL:	A240 TP 304
EXTERNAL STEEL:	A 36 CS
INTERNAL PIPING:	A240 TP 304
NOZZLES: (FLANGES)	A182 TP 304
(NECKS)	A312 TP 304
MANHOLE NOZZLE:	A312 TP 304
MANHOLE COVER:	A182 TP 304
COUPLINGS:	A312 TP 304
BOLTS NUTS:	A193 GR. B7 / A194 GR. 2H
GASKETS:	ANSI B16.5 GASKET, GARLOCK 3000, PTFE OR EQUAL, OR EPDM
ELECTRODES:	ER308L / E308L
CORROSION ALLOWANCE:	NONE
STRESS RELIEF:	N/A
GRINDING:	N/A
SURFACE PREP. INT.:	N/A
SURFACE PREP. EXT.:	N/A
PAINT INTERIOR:	N/A
PAINT EXTERIOR:	N/A
INSULATION:	3" FIBERGLASS OR MINERAL WOOL BY OTHERS
CLEANING:	N/A
HYDROSTATIC TESTING:	YES
RADIOGRAPHY:	NONE

NOZZLE SCHEDULE					
MK	SIZE	SERVICE	RATING	TYPE	QTY
A1, A2	24"	MANWAY	API 650 STD.	S.O.R.F. FLG. W/COVER, HINGE	2
B	20"	HATCH	API 650 STD.	S.O.R.F. FLG. W/COVER, HINGE	1
C	6"	MASH INLET	CLASS 150	S.O.R.F. FLG.	1
D	8"	MASH OUTLET	CLASS 150	S.O.R.F. FLG.	1
E	6"	COZ OUTLET	CLASS 150	S.O.R.F. FLG.	1
F	3"	LEVEL TRANSMITTER	CLASS 150	S.O.R.F. FLG.	1
G	2"	LEVEL SWITCH	CLASS 150	S.O.R.F. FLG.	1
H	3/4"	TI	3000#	HALF CLPG, NPTF	1
J	3/4"	TE	3000#	HALF CLPG, NPTF	1
K	2"	STEAM INLET	CLASS 150	S.O.R.F. FLG.	1
M	6"	PSV	CLASS 150	S.O.R.F. FLG.	1
N	16"	AGITATOR	CLASS 150	S.O.R.F. FLG.	1

- NOTES:**
- ALL MATERIAL TO BE NEW, FREE OF PITS, SCALE OR ANY OTHER FOREIGN MATERIAL.
 - REMOVE ALL BURRS AND BREAK ALL SHARP EDGES 0.01" MAX ON WELDMENTS.
 - ALL WELDS TO MAINTAIN THE STRUCTURAL INTEGRITY OF THE BASE MATERIAL.
 - ALL WELDS TO BE CONTINUOUS AND AIRTIGHT UNLESS NOTED.
 - WELD ALL SEAMS BOTH SIDES UNLESS NOTED.
 - NOZZLE PROJECTION SHALL BE 6" UNLESS OTHERWISE NOTED.
 - FINAL NOZZLE ELEVATIONS AND ORIENTATIONS TO BE FIXED AT VENDOR DRAWING SUBMITTAL AND PIPING LAYOUT.
 - ALL DIMENSIONS IN INCHES UNLESS NOTED OTHERWISE.
 - NOT FOR FABRICATION.
 - CONTROL DIMENSION FOR AGITATOR SHOWN ON SHOP FABRICATION DWGS.
 - NOZZLE "N" TO PROVIDE AGITATOR SUPPORT. NOZZLE "N" AND BAFFLES ON HOLD PENDING AGITATOR VENDOR SELECTION.

CONFIDENTIAL

REVISIONS					
REV	DATE	DESCRIPTION	BY	CHKD	APP
0	19SEP05	ISSUE FOR DESIGN	CE	DP	AS
1	23AUG06	ASBUILT	NT		

Delta-T
 www.deltacorp.com
 Voice (757)220-2955 Fax (757)229-1705
 Drawn By: CE Date: 19SEP05

Dwg No.	61310-Q-TK2201
Title	TK-2201 LIQUEFACTION TANK
Client Information	BUNGE-EREGON VICKSBURG
Location	VICKSBURG, MS

DWG Name: G:\93-169 MIDWEST GRAN PROCESSING\2D Drawings\Working\Q-Equipment Details\169-Q-TK2201.dwg Updated By: ntriche