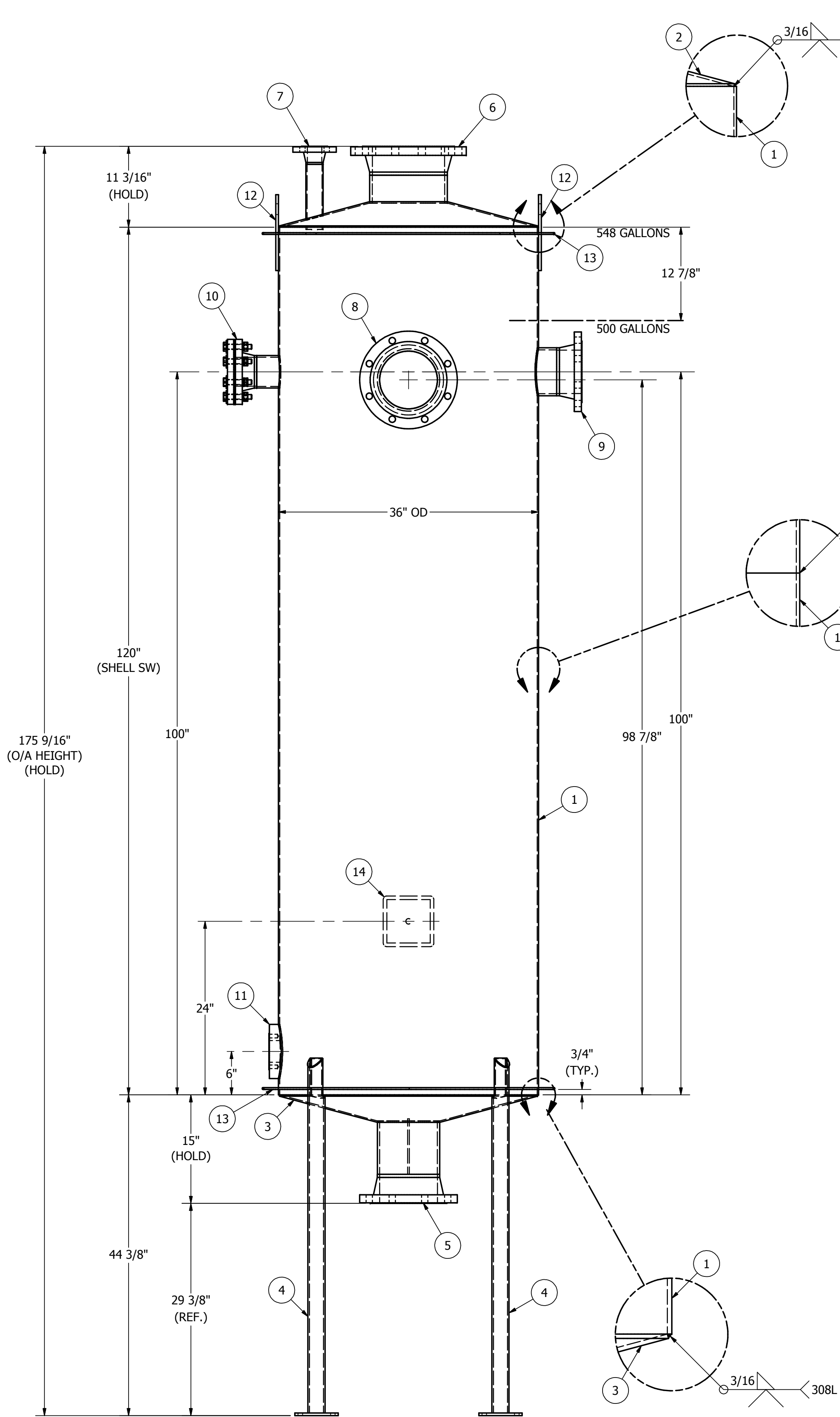


NOZZLE SCHEDULE					
ITEM	TAG	SIZE	NOZZLE TYPE	SERVICE	LOCATION
5	-	8 in	150# RFWN FLANGE	DISCHARGE	BOTTOM HEAD
6	-	10 in	150# RFWN FLANGE	CONNECTION	TOP HEAD
7	-	2 in	150# RFWN FLANGE	CONNECTION	TOP HEAD
8	-	8 in	150# RFWN FLANGE	CONNECTION	SHELL
9	-	6 in	150# RFWN FLANGE	CONNECTION	SHELL
10	-	4 in	150# RFWN FLANGE	SPARE	SHELL
11	-	3 in	150# PAD FLANGE	LEVEL	SHELL



ELEVATION VIEW  
(SEE PLAN VIEW FOR TRUE ORIENTATION)

ITEM	DET	QTY	MARK	SERVICE	DESCRIPTION	MATERIAL	FINISH
1	-	1	-	Shell	3/16" PL x 36" OD x 120" SW	SA240 304 S/S	Mil/Mil
2	-	1	-	Top Head	3/16" PL (Cone) x 35 5/8" ID x 150" IA	SA240 304 S/S	Mil/Mil
3	-	1	-	Bottom Head	3/16" PL (Cone) x 35 5/8" ID x 150" IA	SA240 304 S/S	Mil/Mil
4a	L	4	-	Leg	2" SCH 40 Pipe x 49" LG	SA312 304 S/S	Mil/Mil
4b	L	4	-	Leg Base Plate	3/8" PL x 6" x 6" LG w/ (4) 5/8" Dia. Holes	SA240 304 S/S	Mil/Mil
4c	L	4	-	Leg Cap	10 Ga. x 1 3/4" x 2 3/8" LG	SA240 304 S/S	Mil/Mil
4d	-	-	-	DELETED	DELETED	DELETED	DELETED
5a	A	1	-	Discharge Flange	8" 150# ASME RFWN Flange	SA182 304 S/S	Mil/Mil
5b	A	1	-	Discharge Extension	8" SCH 10 Pipe	SA312 304 S/S	Mil/Mil
5c	A	1	-	Discharge Vortex Breaker	1/4" PL x 7 11/16" x 8" LG	SA240 304 S/S	Mil/Mil
6a	B	1	-	Connection Flange	10" 150# ASME RFWN Flange	SA182 304 S/S	Mil/Mil
6b	B	1	-	Connection Extension	10" SCH 10 Pipe	SA312 304 S/S	Mil/Mil
7a	C	1	-	Connection Flange	2" 150# ASME RFWN Flange	SA182 304 S/S	Mil/Mil
7b	C	1	-	Connection Extension	2" SCH 10 Pipe	SA312 304 S/S	Mil/Mil
8a	D	1	-	Connection Flange	8" 150# ASME RFWN Flange	SA182 304 S/S	Mil/Mil
8b	D	1	-	Connection Extension	8" SCH 10 Pipe	SA312 304 S/S	Mil/Mil
9a	E	1	-	Connection Flange	6" 150# ASME RFWN Flange	SA182 304 S/S	Mil/Mil
9b	E	1	-	Connection Extension	6" SCH 10 Pipe	SA312 304 S/S	Mil/Mil
10a	F	1	-	Spare Flange	4" 150# ASME RFWN Flange	SA182 304 S/S	Mil/Mil
10b	F	1	-	Spare Extension	4" SCH 10 Pipe	SA312 304 S/S	Mil/Mil
10c	F	1	-	Spare Cover	4" 150# ASME Blind Flange	SA182 304 S/S	Mil/Mil
10d	F	1	-	Spare Gasket	1/8" THK Full Face Gasket for 4" 150# Flange	EPDM	As Is
10e	F	8	-	Spare Hardware	5/8"-11 UNC Heavy Hex Bolt x 3 1/2" LG.	SA193 B8 304 S/S	Mil/Mil
10f	F	8	-	Spare Hardware	5/8" Flat Washer	S/S	Mil/Mil
10g	F	8	-	Spare Hardware	5/8" Helical Split Ring Lockwasher	S/S	Mil/Mil
10h	F	8	-	Spare Hardware	5/8"-11 UNC Heavy Hex Nut	SA194 2H 304 S/S	Mil/Mil
11	J	1	-	Level	3" 150# ASME Pad Flange	SA182 304 S/S	Mil/Mil
12	G	2	-	Lifting Lug	3/8" PL x 4" x 10 1/2" LG.	SA240 304 S/S	Mil/Mil
13a	K	2	-	Insulation Support Ring	1/4" RD Bar x 40" ID	SA479 304 S/S	Mil/Mil
13b	K	8	-	Insulation Support Ring Stand Off	1/4" RD Bar x 2" LG	SA479 304 S/S	Mil/Mil
14a	H	1	-	Data Tag	14 Ga. x 6" x 6"	SA240 304 S/S	2B/ZB
14b	H	1	-	Data Tag Standoff Back	3/16" PL x 7" x 7"	SA240 316L S/S	Mil/Mil
14c	H	1	-	Data Tag Standoff	3/4" Rnd Bar x 1/4" LG	SA479 316L S/S	Mil/Mil



ISOMETRIC VIEW

NOTES:	
1	Flange Bolt Holes To Straddle Major Vertical And Horizontal Vessel Centerlines Unless Noted Otherwise.
2	If This Equipment Is Used In Contact With Corrosive Materials (Salt, Chlorides, Halogens Or Other Corrodents), Gilbert Industries Inc. Will Not Be Responsible For The Corrosion Resistance Or The Resulting Damage, Without Written Acceptance Of Such Corrosive Conditions By Gilbert Industries Inc. Based Upon A Specific Intended Use And/Or Service.
3	A Suitable Pressure And/Or Vacuum Relief Device(s) Must Be Installed By The User Or His Designated Agent For Vessel And/Or Heat Transfer Surface Operation.
4	Production To Provide Protection For All Nozzles And Fittings Prior To Shipment. Vessel Must Be Adequately Vented For Shipment.
5	Weld Seams In Vessel Head And Shell Shall Be Located To Avoid All Nozzles, Access Openings, And Reinf. Pads Where Possible.
6	All Reinforcement Pads Must Be Provided With (1) One 1/4" Dia. Weephole Located At Horizontal Point When Vessel Is In Its Normal Operating Position.
7	All Tolerances Are In Accordance Gilbert Industries Drawing Number FA00001 Unless Specified Otherwise.
8	Customer Is Responsible For Passivation And/Or CIP Cleaning Prior To Placing Tank In Service.
9	Vessel To Be Cleaned Inside And Outside; Free From Dirt, Grease, Mill Scale, And Weld Splatter.
10	Vessel And/or HTS To Be Hydrotested In Accordance With Procedure GI-QC-9A.
11	Vessel Designed For Seismic And Wind Loads Per IBC 2012 For Vicksburg, MS 39183.
12	Vessel Is Designed (With Exceptions), Fabricated, And Tested In Accordance With ASME Code Section VIII Division 1, 2013 Edition, But Not Stamped.
13	Weld Procedures 0808-GM-S-01 AND 0808-GT-M-01 Are In Accordance With ASME. All Welding To Be Done By Certified Welders.
14	

	MATERIAL FINISH	WELD FINISH
INTERIOR	MILL	FLUSH - 80 GRIT
EXTERIOR	MILL	WIRE BRUSH
SUPPORTS	MILL	WIRE BRUSH
TRUSS	N/A	N/A
LADDER/HANDRAIL	N/A	N/A
H.T.S. TINT	N/A	N/A

CIP DATA: N/A	
FLOW RATE: N/A GPM AT N/A PSI (APPROX.)	
INSULATION	
SHELL: N/A BTM HEAD: N/A TOP HEAD: N/A	
PAINT, EXT: N/A	

HEAT TRANSFER SURFACE INFO	
DIMPLE JACKET ON THIS JOB IS DESIGNED FOR	
<input type="checkbox"/> NON-THERMAL SHOCK LOADING	<input checked="" type="checkbox"/> NA
<input type="checkbox"/> THERMAL SHOCK LOADING	
*ONE BOX MUST BE CHECKED*	
SHELL: <input type="checkbox"/> DIMPLED <input type="checkbox"/> CONVENTIONAL	<input type="checkbox"/> HALF PIPE <input type="checkbox"/> OTHER
HEAD: <input type="checkbox"/> DIMPLED <input type="checkbox"/> CONVENTIONAL	<input type="checkbox"/> HALF PIPE <input type="checkbox"/> OTHER
AREA SHELL: N/A	HEAD: N/A
DIMPLE PATTERN TYPE: N/A	
HEATING MEDIUM: N/A	
COOLING MEDIUM: N/A	


VESSEL M.A.W.P.	+0.36 / -0.216 PSIG @ 180 ° F
VESSEL DESIGN TEMP.	180 ° F
VESSEL MIN. DESIGN METAL TEMP.	-20 ° F
VESSEL OPERATING PRESSURE	ATMOSPHERIC
VESSEL OPERATING TEMP.	AMBIENT
VESSEL VOLUME	500 GALLON

VESSEL TEST PRESSURE:	10" WC
JACKET TEST PRESSURE:	N/A

PRODUCT DATA: UNKNOWN	
VISCOSITY: UNKNOWN	SPECIFIC GRAVITY: 1.0
EST. EMPTY WEIGHT: 1,227 LBS.	
EST. OPERATING WEIGHT: 5,801 LBS.	
CORROSION ALLOWANCE: NONE	

E	AS-BUILT DRAWINGS.	RMF 7/9/15
D	ADDED HOLD DIMENSIONS TO MAIN PAGE.	RMF 6/9/15
C	REVISED PER CUSTOMER MARK UPS. APPROVED AS NOTED. RELEASE TO FABRICATION.	RMF 6/8/15
B	HEADS WERE ASME F&D STYLE, OAH OF ITEM #12 WAS 12 1/2". RESUBMIT FOR APPROVAL.	RMF 6/1/15
A	REVISED PER CUSTOMER MARK UPS. APPROVED AS NOTED. RELEASE TO FABRICATION.	RMF 5/14/15
REV	DESCRIPTION	BY/DATE

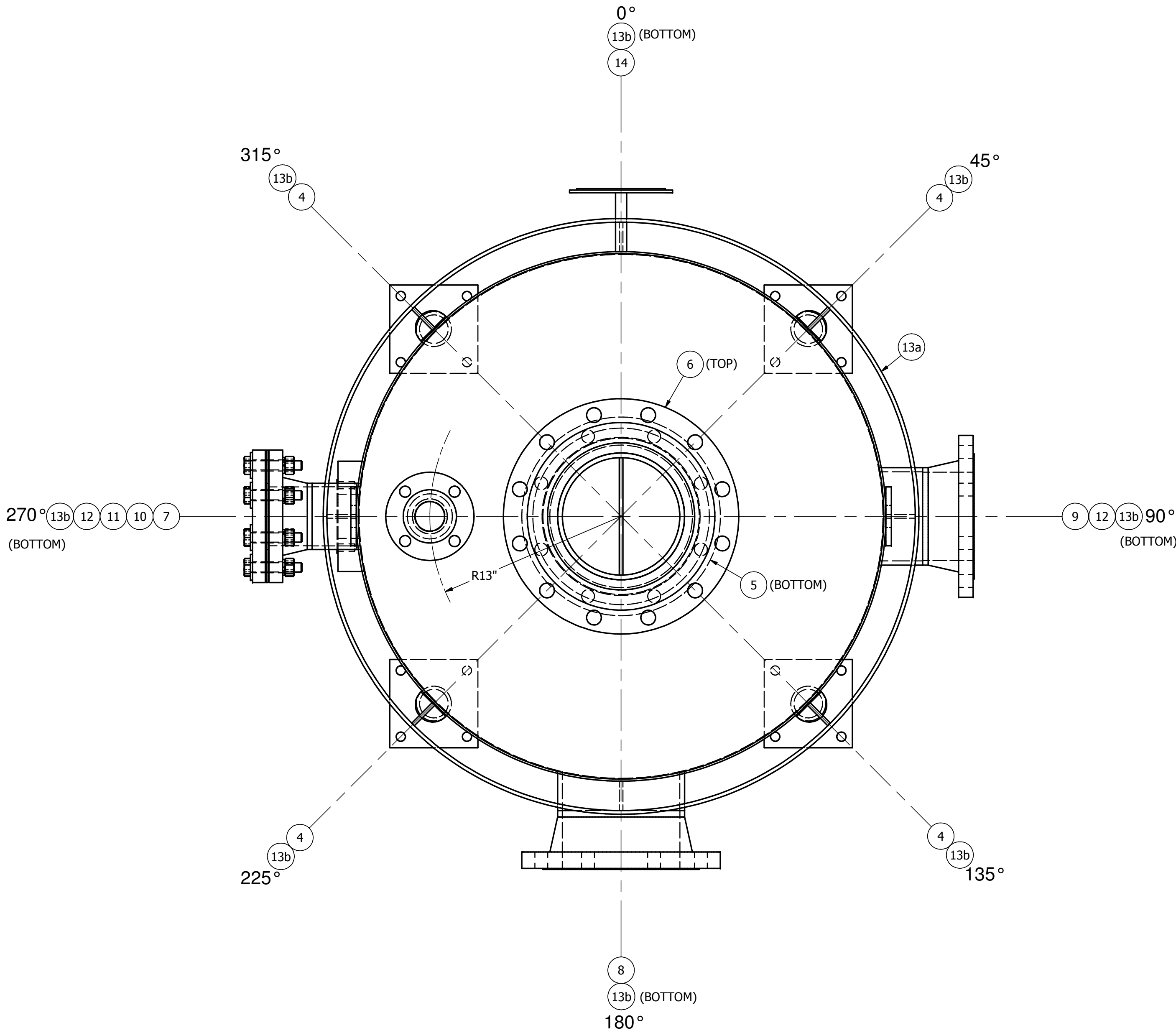
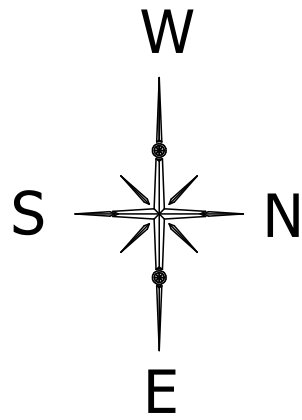
TITLE	500 GALLON STORAGE TANK (TK-2503)
-------	-----------------------------------

QTY REQD: (1)		CUSTOMER P.O.#: 1503101A	
This drawing is the property of GILBERT INDUSTRIES, Inc. and is transmitted in confidence. The reproduction, use, or disclosure, in whole or part, of the design contained herein is prohibited without the written consent of GILBERT INDUSTRIES, Inc.			
DIMENSIONS ARE IN INCHES UNLESS SPECIFIED			
	SCALE	DO NOT SCALE	DRAWN BY
	NTS	DRAWING	RMF
	PROD	APPLV	DWG DATE:
	DATE	DATE	3/24/2015
	SERIAL #	DWG NO.	SALES
	GI150010	GI150010	SN
SHEET NO.1 OF 3		REV	E

This drawing has been reviewed by  
GILBERT INDUSTRIES engineering.

Jason C. Gayer - Gilbert Industries Inc.

ENG.




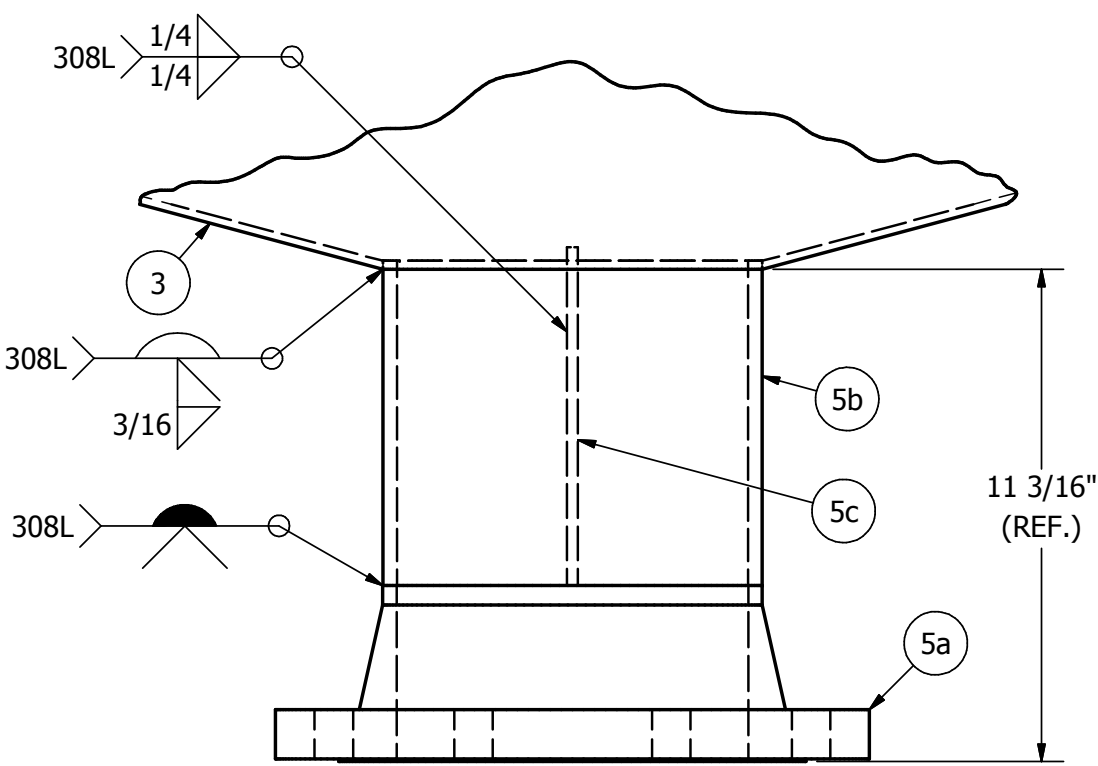
PLAN VIEW

ITEM	DET	QTY	MARK	SERVICE	DESCRIPTION	MATERIAL	FINISH
1	-	1	-	Shell	3/16" PL x 36" OD x 120" SW	SA240 304 S/S	Mil/Mil
4a	L	4	-	Leg	2" SCH 40 Pipe x 49" LG	SA312 304 S/S	Mil/Mil
4b	L	4	-	Leg Base Plate	3/8" PL x 6" x 6" LG w/ (4) 5/8" Dia. Holes	SA240 304 S/S	Mil/Mil
4c	L	4	-	Leg Cap	10 Ga. x 1 3/4" x 2 3/8" LG	SA240 304 S/S	Mil/Mil
4d	-	-	-	DELETED	DELETED	DELETED	DELETED
5a	A	1	-	Discharge Flange	8" 150# ASME RFWN Flange	SA182 304 S/S	Mil/Mil
5b	A	1	-	Discharge Extension	8" SCH 10 Pipe	SA312 304 S/S	Mil/Mil
5c	A	1	-	Discharge Vortex Breaker	1/4" PL x 7 11/16" x 8" LG	SA240 304 S/S	Mil/Mil
6a	B	1	-	Connection Flange	10" 150# ASME RFWN Flange	SA182 304 S/S	Mil/Mil
6b	B	1	-	Connection Extension	10" SCH 10 Pipe	SA312 304 S/S	Mil/Mil
7a	C	1	-	Connection Flange	2" 150# ASME RFWN Flange	SA182 304 S/S	Mil/Mil
7b	C	1	-	Connection Extension	2" SCH 10 Pipe	SA312 304 S/S	Mil/Mil
8a	D	1	-	Connection Flange	8" 150# ASME RFWN Flange	SA182 304 S/S	Mil/Mil
8b	D	1	-	Connection Extension	8" SCH 10 Pipe	SA312 304 S/S	Mil/Mil
9a	E	1	-	Connection Flange	6" 150# ASME RFWN Flange	SA182 304 S/S	Mil/Mil
9b	E	1	-	Connection Extension	6" SCH 10 Pipe	SA312 304 S/S	Mil/Mil
10a	F	1	-	Spare Flange	4" 150# ASME RFWN Flange	SA182 304 S/S	Mil/Mil
10b	F	1	-	Spare Extension	4" SCH 10 Pipe	SA312 304 S/S	Mil/Mil
10c	F	1	-	Spare Cover	4" 150# ASME Blind Flange	SA182 304 S/S	Mil/Mil
10d	F	1	-	Spare Gasket	1/8" THK Full Face Gasket for 4" 150# Flange	EPDM	As Is
10f	F	8	-	Spare Hardware	5/8" Flat Washer	S/S	Mil/Mil
10e	F	8	-	Spare Hardware	5/8"-11 UNC Heavy Hex Bolt x 3 1/2" LG.	SA193 B8 304 S/S	Mil/Mil
10g	F	8	-	Spare Hardware	5/8" Helical Split Ring Lockwasher	S/S	Mil/Mil
10h	F	8	-	Spare Hardware	5/8"-11 UNC Heavy Hex Nut.	SA194 2H 304 S/S	Mil/Mil
11	J	1	-	Level	3" 150# ASME Pad Flange	SA182 304 S/S	Mil/Mil
12	G	2	-	Lifting Lug	3/8" PL x 4" x 10 1/2" LG.	SA240 304 S/S	Mil/Mil
13a	K	2	-	Insulation Support Ring	1/4" RD Bar x 40" ID	SA479 304 S/S	Mil/Mil
13b	K	8	-	Insulation Support Ring Stand Off	1/4" RD Bar x 2" LG	SA479 304 S/S	Mil/Mil
14a	H	1	-	Data Tag	14 Ga. x 6" x 6"	SA240 304 S/S	2B/2B
14b	H	1	-	Data Tag Standoff Back	3/16" PL x 7" x 7"	SA240 316L S/S	Mil/Mil
14c	H	1	-	Data Tag Standoff	3/4" Rnd Bar x 1 1/2" LG	SA479 316L S/S	Mil/Mil
3	-	1	-	Bottom Head	3/16" PL (Cone) x 35 5/8" ID x 150" 1A	SA240 304 S/S	Mil/Mil
2	-	1	-	Top Head	3/16" PL (Cone) x 35 5/8" ID x 150" 1A	SA240 304 S/S	Mil/Mil

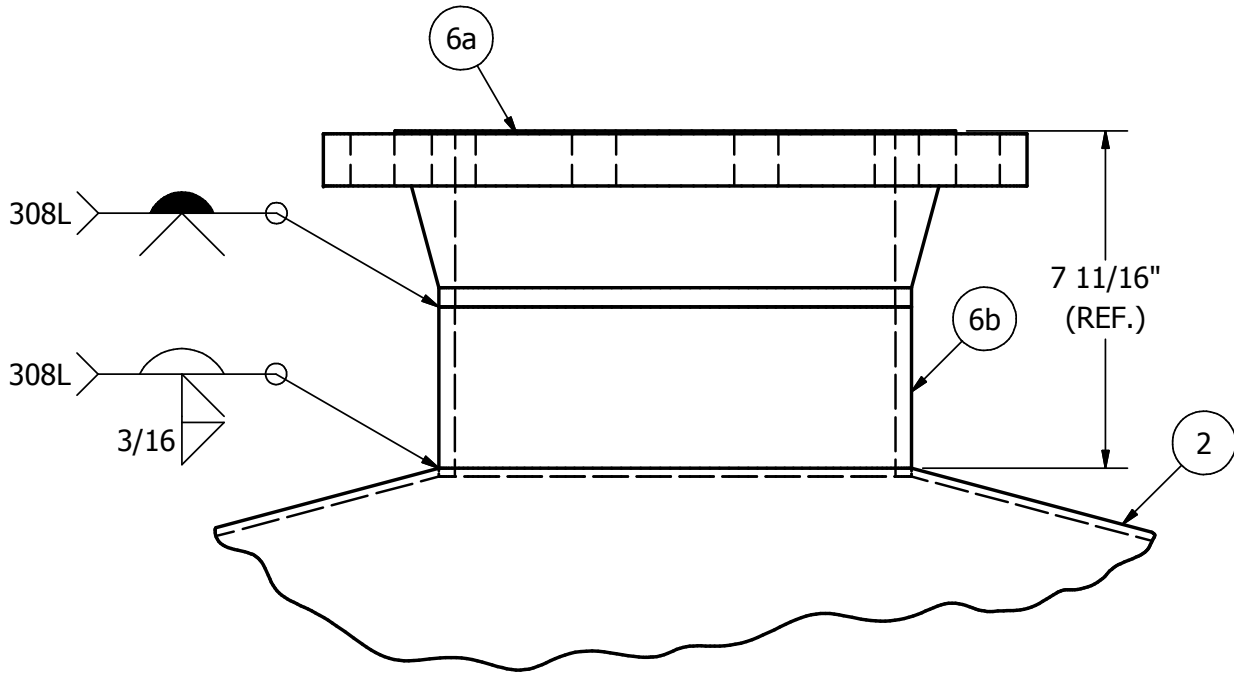
This drawing has been reviewed by  
GILBERT INDUSTRIES engineering.

ENG. *Jason C. Gayer - Gilbert Industries, Inc.*

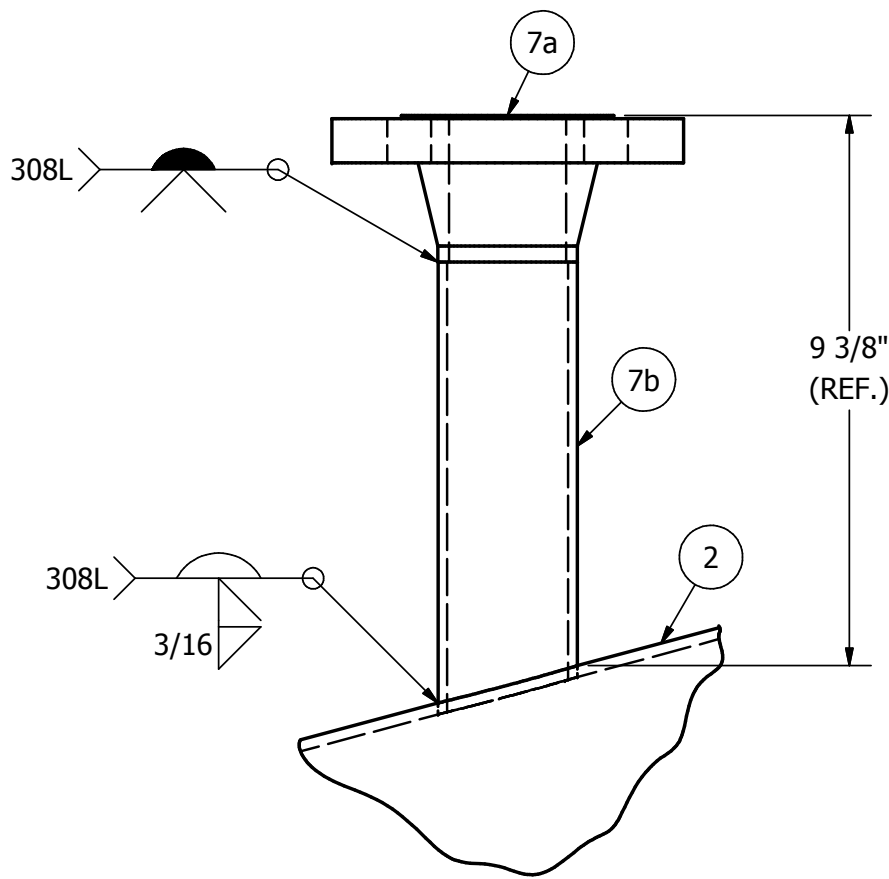
E	AS-BUILT DRAWINGS.	RMF 7/9/15
D	ADDED HOLD DIMENSIONS TO MAIN PAGE.	RMF 6/9/15
C	REVISED PER CUSTOMER MARK UPS. APPROVED AS NOTED. RELEASE TO FABRICATION.	RMF 6/8/15
B	HEADS WERE ASME F&D STYLE, OAH OF ITEM #12 WAS 12 1/2". RESUBMIT FOR APPROVAL.	RMF 6/1/15
A	REVISED PER CUSTOMER MARK UPS. APPROVED AS NOTED. RELEASE TO FABRICATION.	RMF 5/14/15
REV	DESCRIPTION	BY/DATE
TITLE PLAN VIEW FOR 500 GALLON STORAGE TANK (TK-2503)		
QTY REQD. (1)		CUSTOMER P.O. #: 1503101A
This drawing is the property of GILBERT INDUSTRIES, Inc. and is transmitted in confidence. The reproduction, use, or disclosure, in whole or part, of the design contained herein is prohibited without the written consent of GILBERT INDUSTRIES, Inc.		
DIMENSIONS ARE IN INCHES UNLESS SPECIFIED		
	SCALE NTS	DO NOT SCALE DRAWING
	PROD	APPVL
	DATE	DATE
	SERIAL #	DWG NO.
SHEET NO. 2 OF 3		REV E



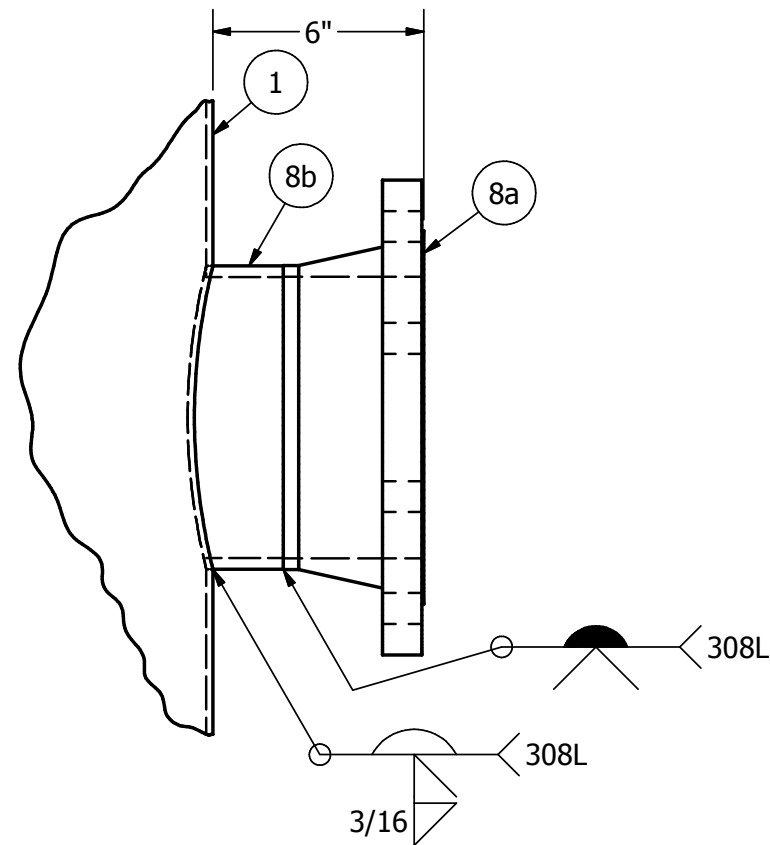
DETAIL "A"  
(CONNECTION)



DETAIL "B"  
(CONNECTION)

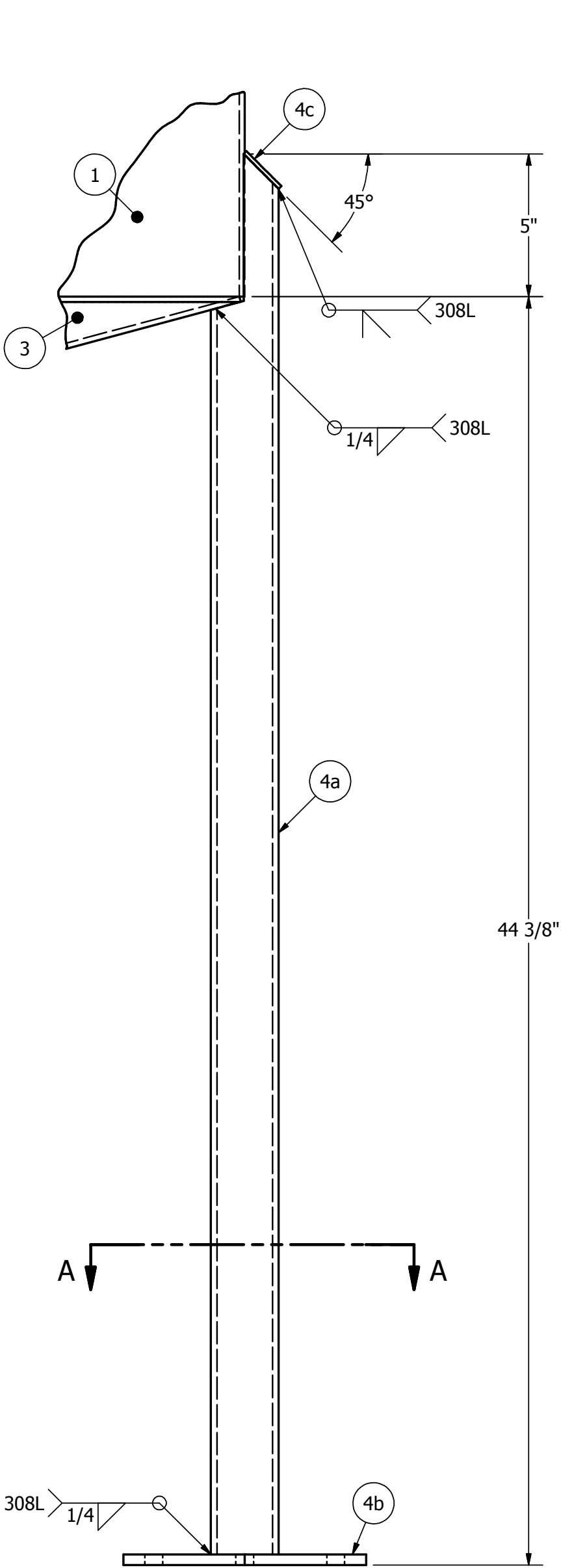


DETAIL "C"  
(CONNECTION)

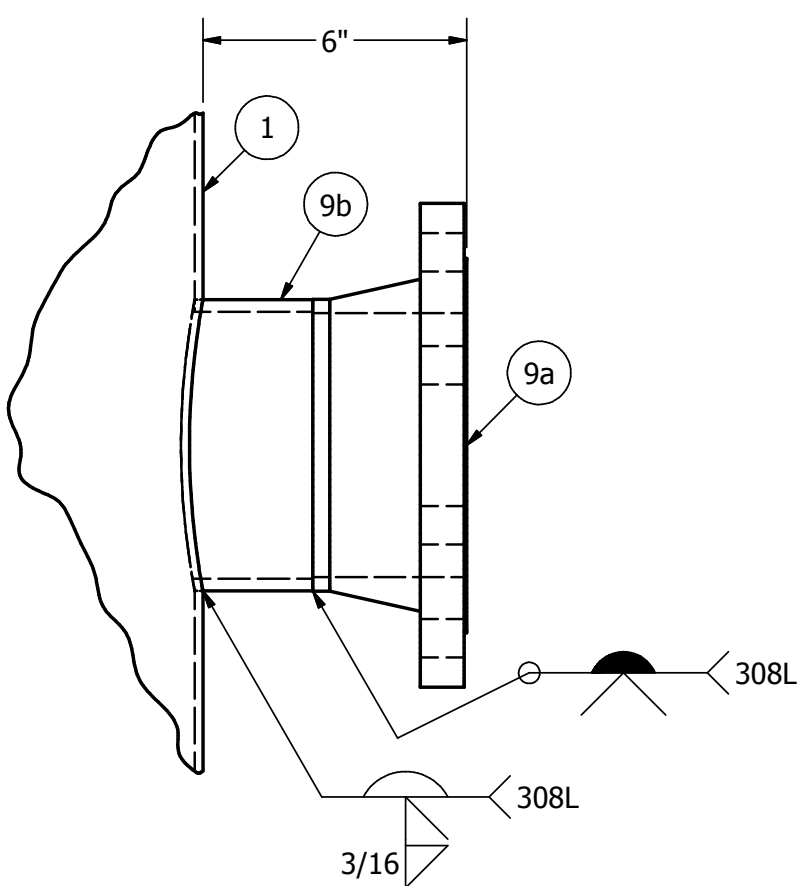


DETAIL "D"  
(CONNECTION)

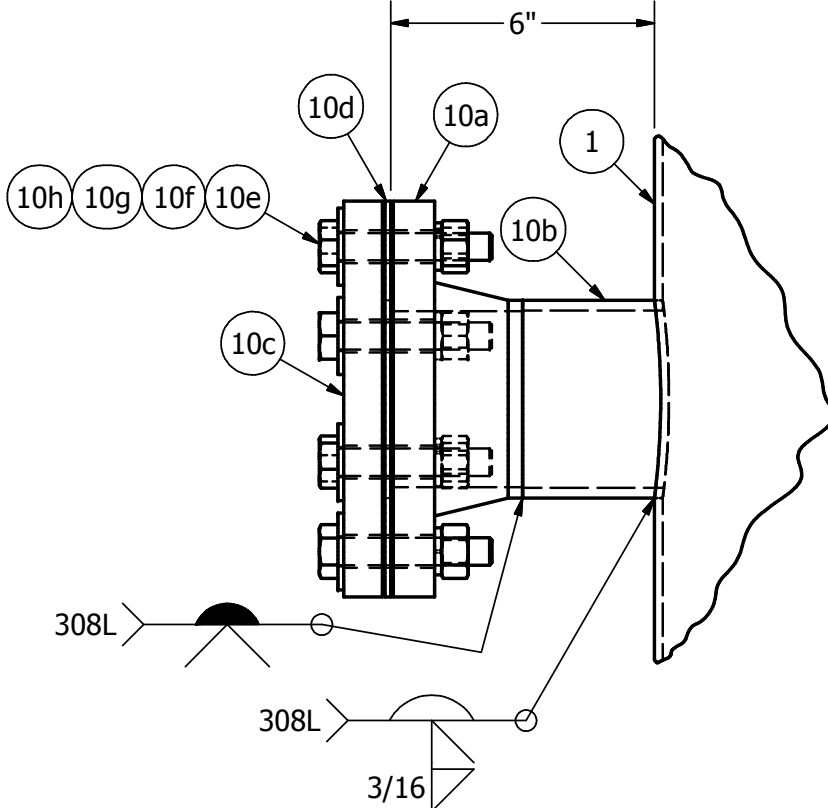
ITEM	DET	QTY	MARK	SERVICE	DESCRIPTION	MATERIAL	FINISH
1	-	1	-	Shell	3/16" PL x 36" OD x 120" SW	SA240 304 S/S	Mill/Mill
4a	L	4	-	Leg	2" SCH 40 Pipe x 49" LG	SA312 304 S/S	Mill/Mill
4b	L	4	-	Leg Base Plate	3/8" PL x 6" x 6" LG w/ (4) 5/8" Dia. Holes	SA240 304 S/S	Mill/Mill
4c	L	4	-	Leg Cap	10 Ga. x 1 3/4" x 2 3/8" LG	SA240 304 S/S	Mill/Mill
4d	-	-	-	DELETED	DELETED	DELETED	DELETED
5a	A	1	-	Discharge Flange	8" 150# ASME RFWN Flange	SA182 304 S/S	Mill/Mill
5b	A	1	-	Discharge Extension	8" SCH 10 Pipe	SA312 304 S/S	Mill/Mill
5c	A	1	-	Discharge Vortex Breaker	1/4" PL x 7 11/16" x 8" LG	SA240 304 S/S	Mill/Mill
6a	B	1	-	Connection Flange	10" 150# ASME RFWN Flange	SA182 304 S/S	Mill/Mill
6b	B	1	-	Connection Extension	10" SCH 10 Pipe	SA312 304 S/S	Mill/Mill
7a	C	1	-	Connection Flange	2" 150# ASME RFWN Flange	SA182 304 S/S	Mill/Mill
7b	C	1	-	Connection Extension	2" SCH 10 Pipe	SA312 304 S/S	Mill/Mill
8a	D	1	-	Connection Flange	8" 150# ASME RFWN Flange	SA182 304 S/S	Mill/Mill
8b	D	1	-	Connection Extension	8" SCH 10 Pipe	SA312 304 S/S	Mill/Mill
9a	E	1	-	Connection Flange	6" 150# ASME RFWN Flange	SA182 304 S/S	Mill/Mill
9b	E	1	-	Connection Extension	6" SCH 10 Pipe	SA312 304 S/S	Mill/Mill
10a	F	1	-	Spare Flange	4" 150# ASME RFWN Flange	SA182 304 S/S	Mill/Mill
10b	F	1	-	Spare Extension	4" SCH 10 Pipe	SA312 304 S/S	Mill/Mill
10c	F	1	-	Spare Cover	4" 150# ASME Blind Flange	SA182 304 S/S	Mill/Mill
10d	F	1	-	Spare Gasket	1/8" THK Full Face Gasket for 4" 150# Flange	EPDM	As Is
10f	F	8	-	Spare Hardware	5/8" Flat Washer	S/S	Mill/Mill
10e	F	8	-	Spare Hardware	5/8"-11 UNC Heavy Hex Bolt x 3 1/2" LG.	SA193 B8 304 S/S	Mill/Mill
10g	F	8	-	Spare Hardware	5/8" Helical Split Ring Lockwasher	S/S	Mill/Mill
10h	F	8	-	Spare Hardware	5/8"-11 UNC Heavy Hex Nut	SA194 2H 304 S/S	Mill/Mill
11	J	1	-	Level	3" 150# ASME Pad Flange	SA182 304 S/S	Mill/Mill
12	G	2	-	Lifting Lug	3/8" PL x 4" x 10 1/2" LG.	SA240 304 S/S	Mill/Mill
13a	K	2	-	Insulation Support Ring	1/4" RD Bar x 40" ID	SA479 304 S/S	Mill/Mill
13b	K	8	-	Insulation Support Ring Stand Off	1/4" RD Bar x 2" LG	SA479 304 S/S	Mill/Mill
14a	H	1	-	Data Tag	14 Ga. x 6" x 6"	SA240 304 S/S	2B/2B
14b	H	1	-	Data Tag Standoff Back	3/16" PL x 7" x 7"	SA240 316L S/S	Mill/Mill
14c	H	1	-	Data Tag Standoff	3/4" Rnd Bar x 1" LG	SA479 316L S/S	Mill/Mill
3	-	1	-	Bottom Head	3/16" PL (Cone) x 35 5/8" ID x 150° 1A	SA240 304 S/S	Mill/Mill
2	-	1	-	Top Head	3/16" PL (Cone) x 35 5/8" ID x 150° 1A	SA240 304 S/S	Mill/Mill



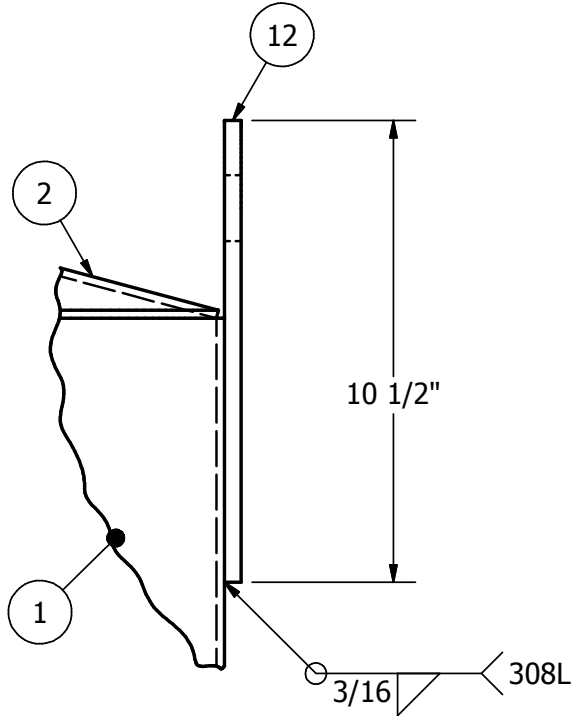
DETAIL "L"  
(TYP. LEG)



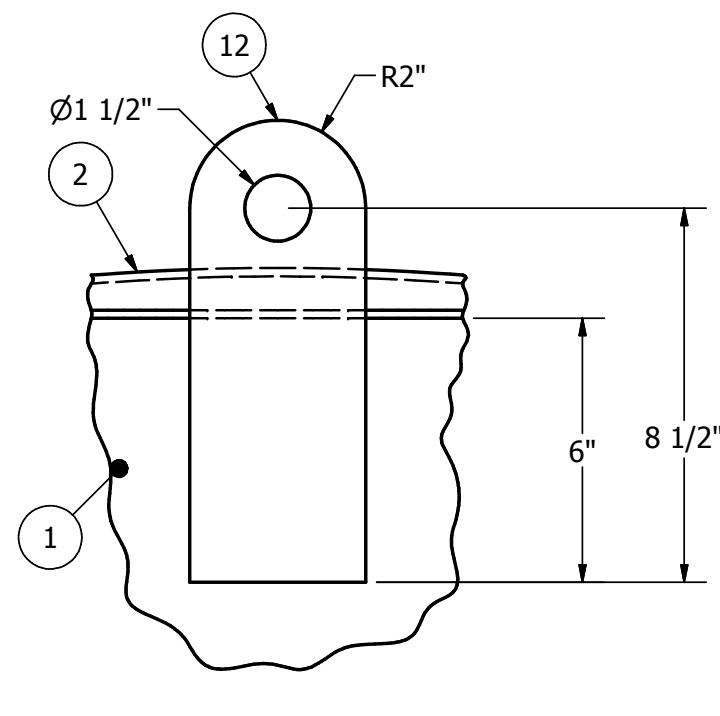
DETAIL "E"  
(CONNECTION)



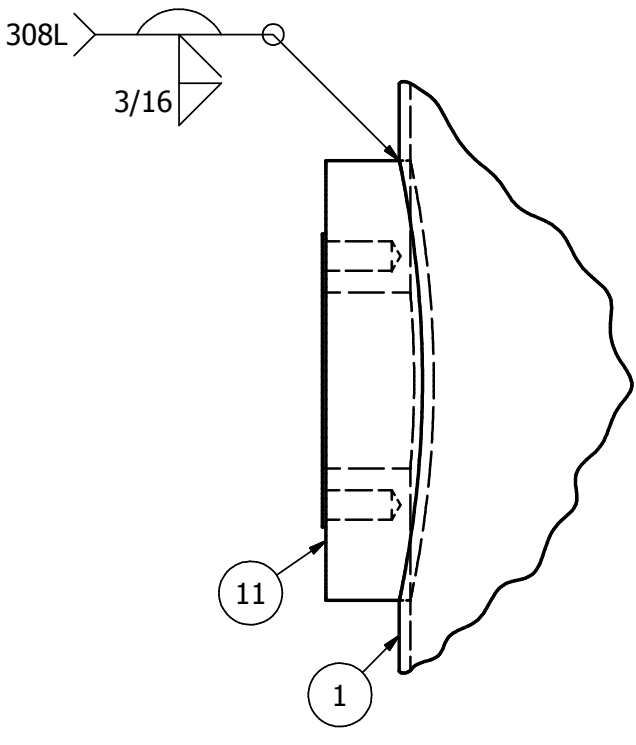
DETAIL "F"  
(SPARE)



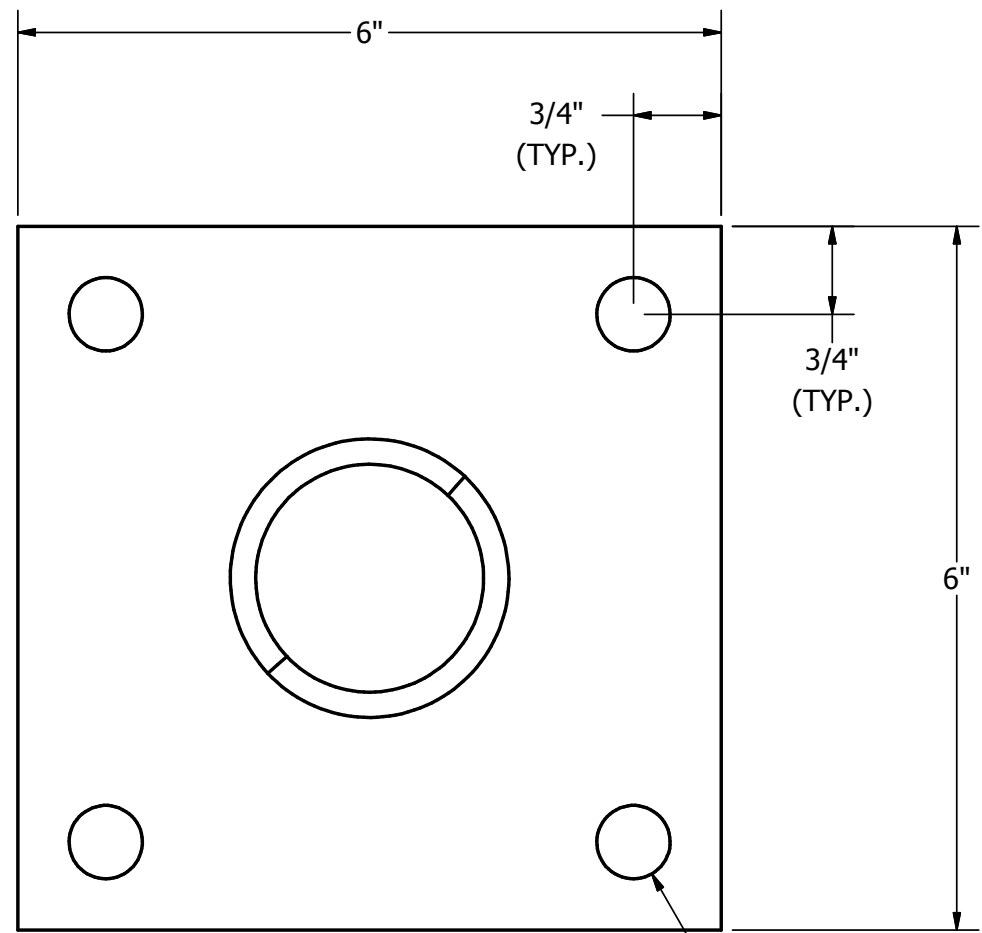
SIDE VIEW



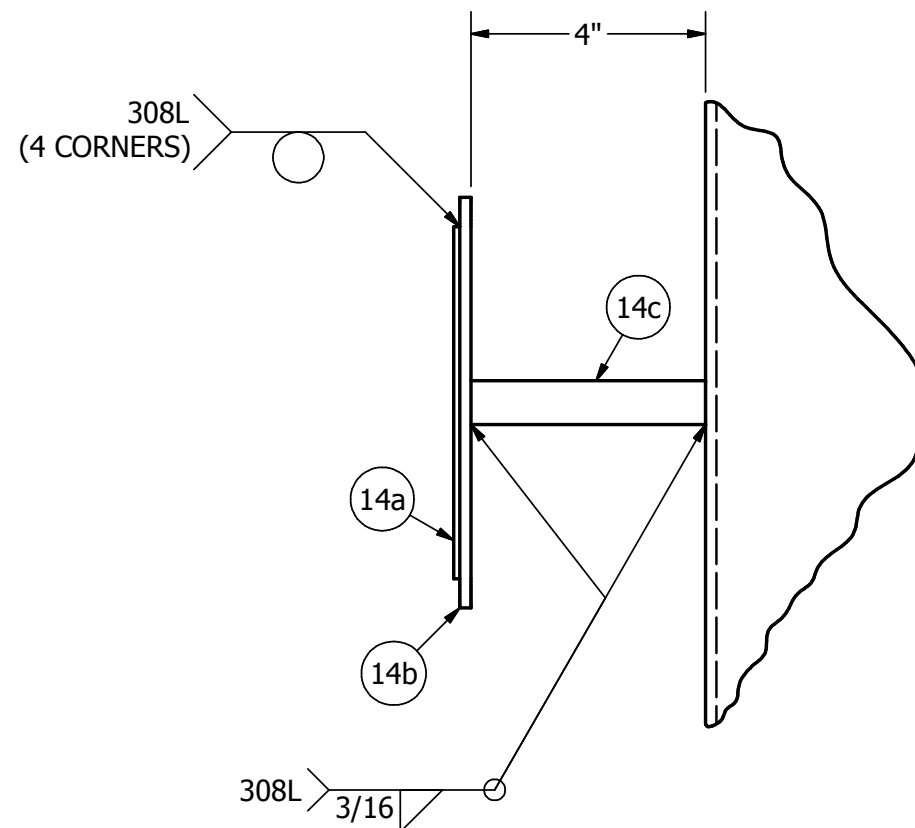
FRONT VIEW



DETAIL "J"  
(LEVEL)

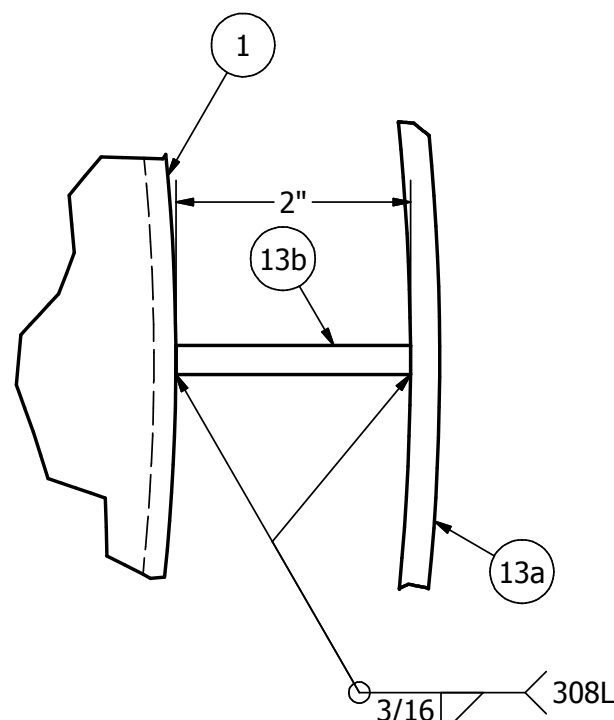


SECTION "A-A"  
(LEG BASE PLATE)



DETAIL "H"  
(DATA PLATE & STAND OFF)

DETAIL "G"  
(LIFTING LUG)



DETAIL "K"  
(INSULATION SUPPORT)

This drawing has been reviewed by  
GILBERT INDUSTRIES engineering.

ENG. *Jason C. Gayer - Gilbert Industries Inc.*

E	AS-BUILT DRAWINGS.	RMF
D	ADDED HOLD DIMENSIONS TO MAIN PAGE.	7/9/2015
C	REVISED PER CUSTOMER MARK UPS. APPROVED AS NOTED. RELEASE TO FABRICATION.	6/9/2015
B	HEADS WERE ASME F&D STYLE. OAH OF ITEM #12 WAS 12 1/2". RESUBMIT FOR APPROVAL.	RMF
A	REVISED PER CUSTOMER MARK UPS. APPROVED AS NOTED. RELEASE TO FABRICATION.	6/1/2015
REV	DESCRIPTION	DATE
TITLE		
DETAILS FOR 500 GALLON STORAGE TANK (TK-2503)		
QTY REQD. (1)		
CUSTOMER P.O.#: 1503101A		
This drawing is the property of GILBERT INDUSTRIES, Inc. and is transmitted in confidence. The reproduction, use, or disclosure, in whole or part, of the design contained herein is prohibited without the written consent of GILBERT INDUSTRIES, Inc.		
DIMENSIONS ARE IN INCHES UNLESS SPECIFIED		
SCALE	DO NOT SCALE DRAWING	DRAWN BY
NTS	RMF	RMF
PROD	APPVL	DWG DATE:
DATE	DATE	3/24/2015
SERIAL #	DWG NO.	SALES
GI150010	GI150010	SN
SHEET NO. 3 OF 3		REV
		E