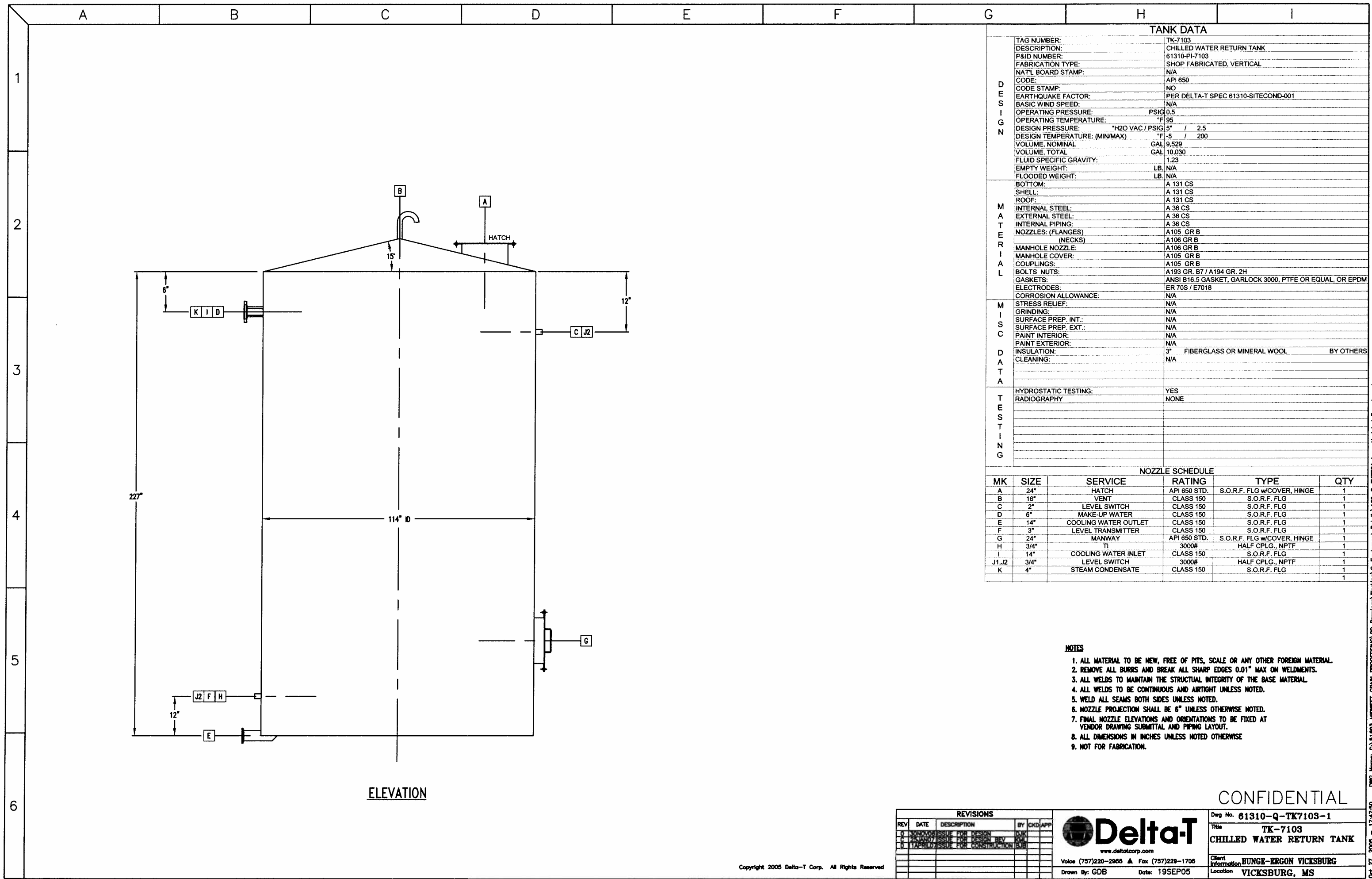


## TANK DATA

<b>D E S I G N</b>	TAG NUMBER:	TK-7103	<b>L2348</b>		
	DESCRIPTION:	Chilled Water Return Tank	<b>REV. D</b>		
	P&ID NUMBER:	61310-PI-7103			
	FABRICATION TYPE:	SHOP FABRICATED, VERTICAL			
	NAT'L BOARD STAMP:	N/A			
	CODE:	API 650			
	CODE STAMP:	NO			
	EARTHQUAKE FACTOR:	PER DELTA-T SPEC 61310-SITECOND-001			
	BASIC WIND SPEED:	N/A			
	OPERATING PRESSURE:	PSIG	0.5		
	OPERATING TEMPERATURE:	°F	85		
	DESIGN PRESSURE:	"H2O VAC / PSIG	5" / 2.5		
	DESIGN TEMPERATURE: (MIN/MAX)	°F	-5 / 200		
	VOLUME, NOMINAL	GAL	9,529		
	VOLUME, TOTAL	GAL	10,030		
	FLUID SPECIFIC GRAVITY:	1.00			
	EMPTY WEIGHT:	LB.	8,447		
FLOODED WEIGHT:	LB.	110,858			
<b>M A T E R I A L</b>	BOTTOM:	A 131 CS			
	SHELL:	A 131 CS			
	ROOF:	A 131 CS			
	INTERNAL STEEL:	A 36 CS			
	EXTERNAL STEEL:	A 36 CS			
	INTERNAL PIPING:	A 36 CS			
	NOZZLES: (FLANGES)	A105 GR B			
	(NECKS)	A106 GR B			
	MANHOLE NOZZLE:	A106 GR B			
	MANHOLE COVER:	A105 GR B			
	COUPLINGS:	A105 GR B			
	BOLTS NUTS:	A193 GR. B7 / A194 GR. 2H			
	GASKETS:	ANSI B16.5 GASKET, GARLOCK 3000, PTFE OR EQUAL, OR EPDM			
ELECTRODES:	ER 70S / E7018				
CORROSION ALLOWANCE:	N/A				
<b>M I S C  D A T A</b>	STRESS RELIEF:	N/A			
	GRINDING:	N/A			
	SURFACE PREP. INT.:	N/A			
	SURFACE PREP. EXT.:	N/A			
	PAINT INTERIOR:	N/A			
	PAINT EXTERIOR:	N/A			
	INSULATION:	3" FIBERGLASS OR MINERAL WOOL	BY OTHERS		
	CLEANING:	N/A			
<b>T E S T I N G</b>	HYDROSTATIC TESTING:	YES			
	RADIOGRAPHY	NONE			
NOZZLE SCHEDULE					
MK	SIZE	SERVICE	RATING	TYPE	QTY
A	24"	HATCH	API 650 STD.	S.O.R.F. FLG w/COVER, HINGE	1
B	16	VENT	CLASS 150	S.O.R.F. FLG	1
C	2"	LEVEL SWITCH	CLASS 150	S.O.R.F. FLG	1
D	6"	MAKE-UP WATER	CLASS 150	S.O.R.F. FLG	1
E	14"	COOLING WATER OUTLET	CLASS 150	S.O.R.F. FLG	1
F	3"	LEVEL TRANSMITTER	CLASS 150	S.O.R.F. FLG	1
G	24"	MANWAY	API 650 STD.	S.O.R.F. FLG w/COVER, HINGE	1
H	3/4"	TI	3000#	HALF CPLG NPTF	1
I	14"	COOLING WATER INLET	CLASS 150	S.O.R.F. FLG	1
J1, J2	3/4"	LEVEL GAUGE	3000#	HALF CPLG NPTF	2
K	4"	STEAM CONDENSATE	CLASS 150	S.O.R.F. FLG	1



ELEVATION

TANK DATA

D E S I G N	TAG NUMBER:	TK-7103
	DESCRIPTION:	CHILLED WATER RETURN TANK
	P&ID NUMBER:	61310-PI-7103
	FABRICATION TYPE:	SHOP FABRICATED, VERTICAL
	NAT'L BOARD STAMP:	N/A
	CODE:	API 650
	CODE STAMP:	NO
	EARTHQUAKE FACTOR:	PER DELTA-T SPEC 61310-SITECOND-001
	BASIC WIND SPEED:	N/A
	OPERATING PRESSURE:	PSIG 0.5
	OPERATING TEMPERATURE:	*F 95
	DESIGN PRESSURE:	*H2O VAC / PSIG 5" / 2.5
	DESIGN TEMPERATURE: (MIN/MAX)	*F -5 / 200
	VOLUME, NOMINAL:	GAL 9,529
	VOLUME, TOTAL:	GAL 10,030
FLUID SPECIFIC GRAVITY:	1.23	
EMPTY WEIGHT:	LB N/A	
FLOODED WEIGHT:	LB N/A	
M A T E R I A L	BOTTOM:	A 131 CS
	SHELL:	A 131 CS
	ROOF:	A 131 CS
	INTERNAL STEEL:	A 38 CS
	EXTERNAL STEEL:	A 38 CS
	INTERNAL PIPING:	A 38 CS
	NOZZLES: (FLANGES)	A105 GR B
	(NECKS)	A106 GR B
	MANHOLE NOZZLE:	A106 GR B
	MANHOLE COVER:	A105 GR B
	COUPLINGS:	A105 GR B
	BOLTS NUTS:	A193 GR. B7 / A194 GR. 2H
	GASKETS:	ANSI B16.5 GASKET, GARLOCK 3000, PTFE OR EQUAL, OR EPDM
	ELECTRODES:	ER 70S / E7018
	CORROSION ALLOWANCE:	N/A
M I S C	STRESS RELIEF:	N/A
	GRINDING:	N/A
	SURFACE PREP. INT.:	N/A
	SURFACE PREP. EXT.:	N/A
	PAINT INTERIOR:	N/A
	PAINT EXTERIOR:	N/A
	INSULATION:	3" FIBERGLASS OR MINERAL WOOL BY OTHERS
D A T A	CLEANING:	N/A
T E S T I N G	HYDROSTATIC TESTING:	YES
	RADIOGRAPHY:	NONE

NOZZLE SCHEDULE

MK	SIZE	SERVICE	RATING	TYPE	QTY
A	24"	HATCH	API 650 STD.	S.O.R.F. FLG w/COVER, HINGE	1
B	16"	VENT	CLASS 150	S.O.R.F. FLG	1
C	2"	LEVEL SWITCH	CLASS 150	S.O.R.F. FLG	1
D	6"	MAKE-UP WATER	CLASS 150	S.O.R.F. FLG	1
E	14"	COOLING WATER OUTLET	CLASS 150	S.O.R.F. FLG	1
F	3"	LEVEL TRANSMITTER	CLASS 150	S.O.R.F. FLG	1
G	24"	MANWAY	API 650 STD.	S.O.R.F. FLG w/COVER, HINGE	1
H	3/4"	TI	3000#	HALF CPLG., NPTF	1
I	14"	COOLING WATER INLET	CLASS 150	S.O.R.F. FLG	1
J1,J2	3/4"	LEVEL SWITCH	3000#	HALF CPLG., NPTF	1
K	4"	STEAM CONDENSATE	CLASS 150	S.O.R.F. FLG	1

NOTES

1. ALL MATERIAL TO BE NEW, FREE OF PITS, SCALE OR ANY OTHER FOREIGN MATERIAL.
2. REMOVE ALL BURRS AND BREAK ALL SHARP EDGES 0.01" MAX ON WELDMENTS.
3. ALL WELDS TO MAINTAIN THE STRUCTUAL INTEGRITY OF THE BASE MATERIAL.
4. ALL WELDS TO BE CONTINUOUS AND AIRTIGHT UNLESS NOTED.
5. WELD ALL SEAMS BOTH SIDES UNLESS NOTED.
6. NOZZLE PROJECTION SHALL BE 6" UNLESS OTHERWISE NOTED.
7. FINAL NOZZLE ELEVATIONS AND ORIENTATIONS TO BE FIXED AT VENDOR DRAWING SUBMITTAL AND PIPING LAYOUT.
8. ALL DIMENSIONS IN INCHES UNLESS NOTED OTHERWISE
9. NOT FOR FABRICATION.

CONFIDENTIAL

REVISIONS				
REV	DATE	DESCRIPTION	BY	CHK/APP
0		ISSUE FOR DESIGN		
1		ISSUE FOR DESIGN		
2		ISSUE FOR CONSTRUCTION		

**Delta-T**  
www.deltatcorp.com  
Voice (757)220-2965 Fax (757)229-1706  
Drawn By: GDB Date: 19SEP05

Dwg No. 61310-Q-TK7103-1
Title TK-7103 CHILLED WATER RETURN TANK
Client Information BUNGE-ERGON VICKSBURG
Location VICKSBURG, MS

Dwg Name: G:\1683 MIDWEST GRANT PROCESSING\2D Drawings\Working\G-Equipment Details\168-Q-TK7103.dwg Updated By: ghyant Oct 27, 2005 - 17:47:50

