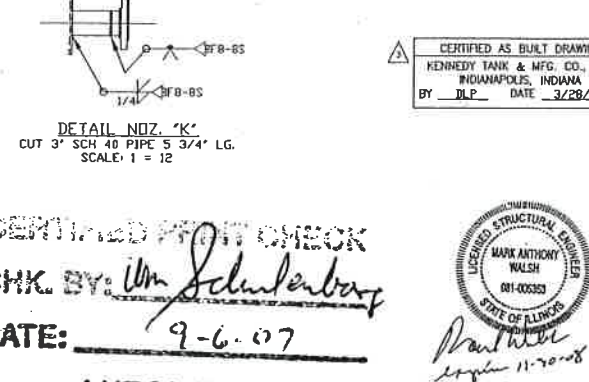
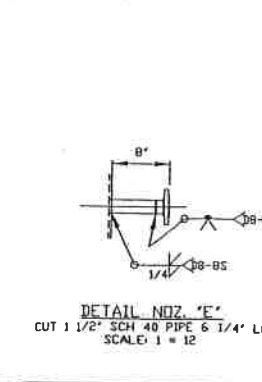
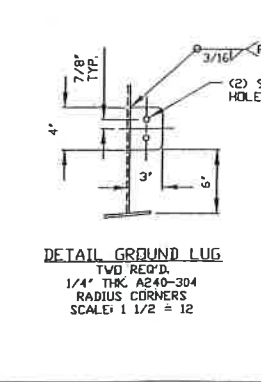
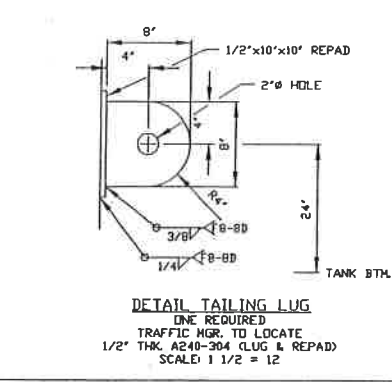
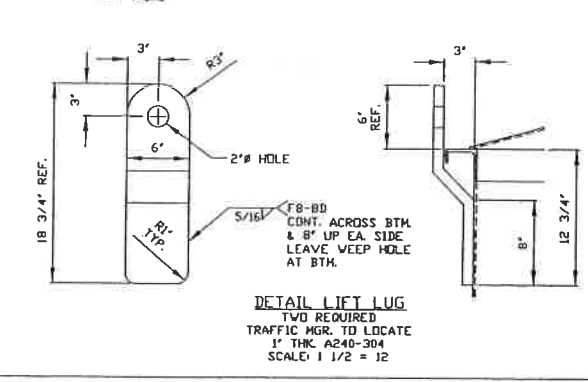
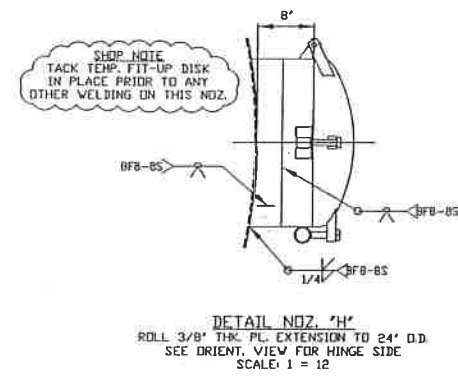
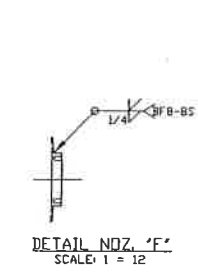
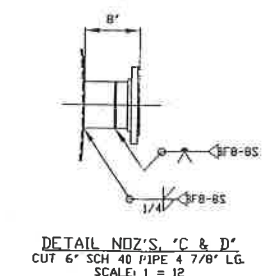
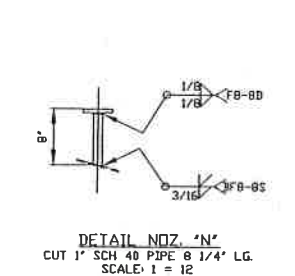
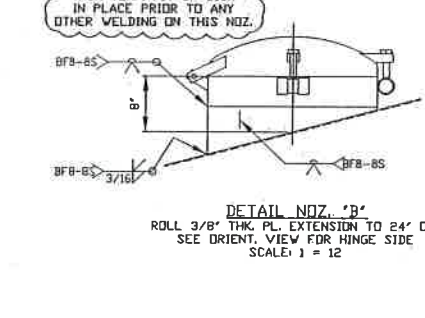
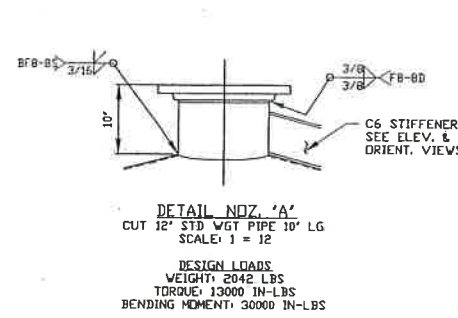
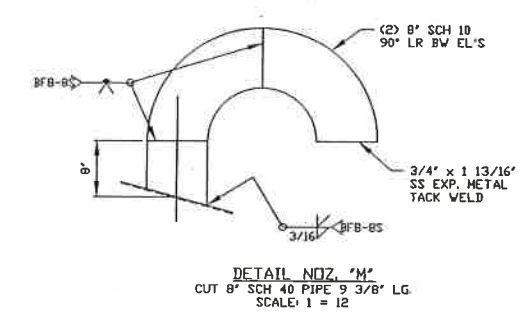


05018
 CIE: ETHANOL
 Canton, Illinois
 09.04.07
 17.1 TS 5101
 018 0012 034



MATERIALS	
ROOF:	3/16" THK. A240-304
SHELL:	1/4" THK. A240-304
BOTTOM:	1/4" THK. A240-304
FLANGES:	A105 GALV. (LJ FLGS.) & A182-304
REPADS:	A240-304
NOZZLE NECKS (PIPE):	A312-304
NOZZLE NECKS (PLATE):	A240-304
WELD FITTINGS:	A403-304
VESSEL SUPPORT:	N/A
STRUCTURAL:	A240-304, A36
BOLTS:	A307 ZINC PLATED
NUTS:	A307 ZINC PLATED
GASKETS:	1/8" NEOPRENE

DESIGN CONDITIONS	
DESIGN PRESSURE (IN. W.C.):	10 INT./5 EXT.
AT DESIGN TEMP. (°F):	200
OPERATING PRESSURE (IN. W.C.):	ATM
AT OPERATING TEMP. (°F):	185
CORROSION ALLOWANCE:	NONE
LABEL:	KT&M (PER API 650 WHERE APPL.)
STRESS RELIEVE:	NONE
RADIOGRAPH:	NONE
JOINT EFF.:	.70
HYDRD TEST:	N/A
AIR TEST:	2-3 PSIG
CUSTOMER INSPECTION:	YES
MTR. COPIES:	1 KT&M, 1 CUSTOMER
NAMEPLATE FACSIMILE:	YES
SEISMIC & WIND DESIGN:	PER API 650

WEIGHTS & CAPACITIES	
EST. CAPACITY, GALS.	
PER FT. STRAIGHT SIDE:	1,071
TOTAL (TO T.O. TOP ANGLE):	40,686
SP. GR. OF CONTENTS:	1.05
EST. WT. OF CONTENTS (LBS):	356,288
EST. WT. OF VESSEL (LBS):	33,000
TOTAL EST. WT. (LBS):	389,288

FITTING SCHEDULE		
MARK	SIZE/RATING/TYP./THK.	REMARKS
A	1 1/2"/150#/RFSD/STD	AGITATOR
B	2 1/4"/CL75/TT SWINGBOLT	TOP MANWAY
C	6"/150#/LJSE/SCH 40	OVERFLOW
D	6"/150#/LJSE/SCH 40	INLET
E	1 1/2"/150#/LJSE/SCH 40	TEMPERATURE
F	3"/150#/RF STUD PAD	LEVEL
G	30"Ø HOLE (Ø" PIPE BY OTHERS)	DISCHARGE
H	2 1/4"/CL75/TT SWINGBOLT	SIDE MANWAY
K	3"/150#/LJSE/SCH 40	RECIRCULATION
M	8"/SCH 40 PIPE	GOOSENECK VENT
N	1"/150#/RFSD/SCH 40	SPENT CIP

- NOTES
- BOLT HOLES TO STRADDLE LINE PARALLEL TO 0°/180° AND 90°/270° CENTERLINES.
 - FABRICATOR SHALL PROVIDE GASKETS, BOLTS, AND HEX NUTS FOR ALL MATING PARTS INCLUDING BLIND FLANGES WHERE NOTED.
 - ✓ INDICATES MACHINE FINISHED SURFACE.
 - INSULATION SUPPORTS ARE REQUIRED.
 - FABRICATOR SHALL PROVIDE PROTECTIVE SHIELDS FOR ALL FLANGES AND OPENINGS.
 - SHOP TOLERANCES: DIMENSIONS ± 1/8" NOZZLES ± 1/2 DEGREE
 - SANDBLAST: INTERNAL NONE (POWDER WASH) EXTERNAL SS BRUSH STARBLAST EXTERNAL CS SSPC-SP6
 - LINING: NONE
 - PAINT: ONE COAT INTERZINC 22 AT 2-3 MILS D.F.T. (CS ONLY)
 - RADIUS WELDS & EDGES 1/8" MINIMUM.

FIELD FILE

REVISIONS		DESCRIPTION:	
NO.	DATE BY	13'-6" I.D. x 38'-0" S-S WHOLE STILLAGE TANK	
1	12/29/06 DLP	FOR: LURGI PSI / CIE, INC. CANTON, IL	
2	1/27/07 DLP		
3	3/28/07 DLP		
4		SCALE: 3/8" = 12"	QUANTITY REQUIRED: ONE
5		DATE: 11/13/06	
6		JOB NO: 7552-09	DRAWING NO: 267552A9D1
7		SCALE: 3/8" = 12"	
8		DATE: 11/20/08	
9		SCALE: 3/8" = 12"	
10		DATE: 11/20/08	

CERTIFIED FROM CHECK
 CHK BY: *Wm. Schulerberg*
 DATE: 9-6-07



LURGI, INC.

FOR: LURGI PSI / CIEC, INC.		REVISIONS		CAD: DLP	APP'D BY: DLP	DC: RMS	DRAWING NO: 267552 ABP1
NO. DATE BY		NO. DATE BY		DATE: 10/05/06		JOB NO: 267552	
QUANTITY		ONE		SCALE: 3/8 = 12		SHEET 1 OF 1	

KT&M
-03
-04
-09

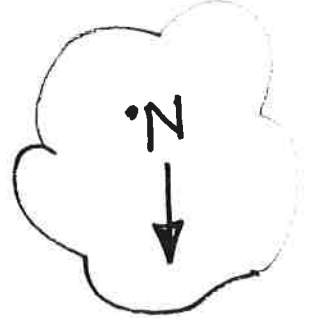
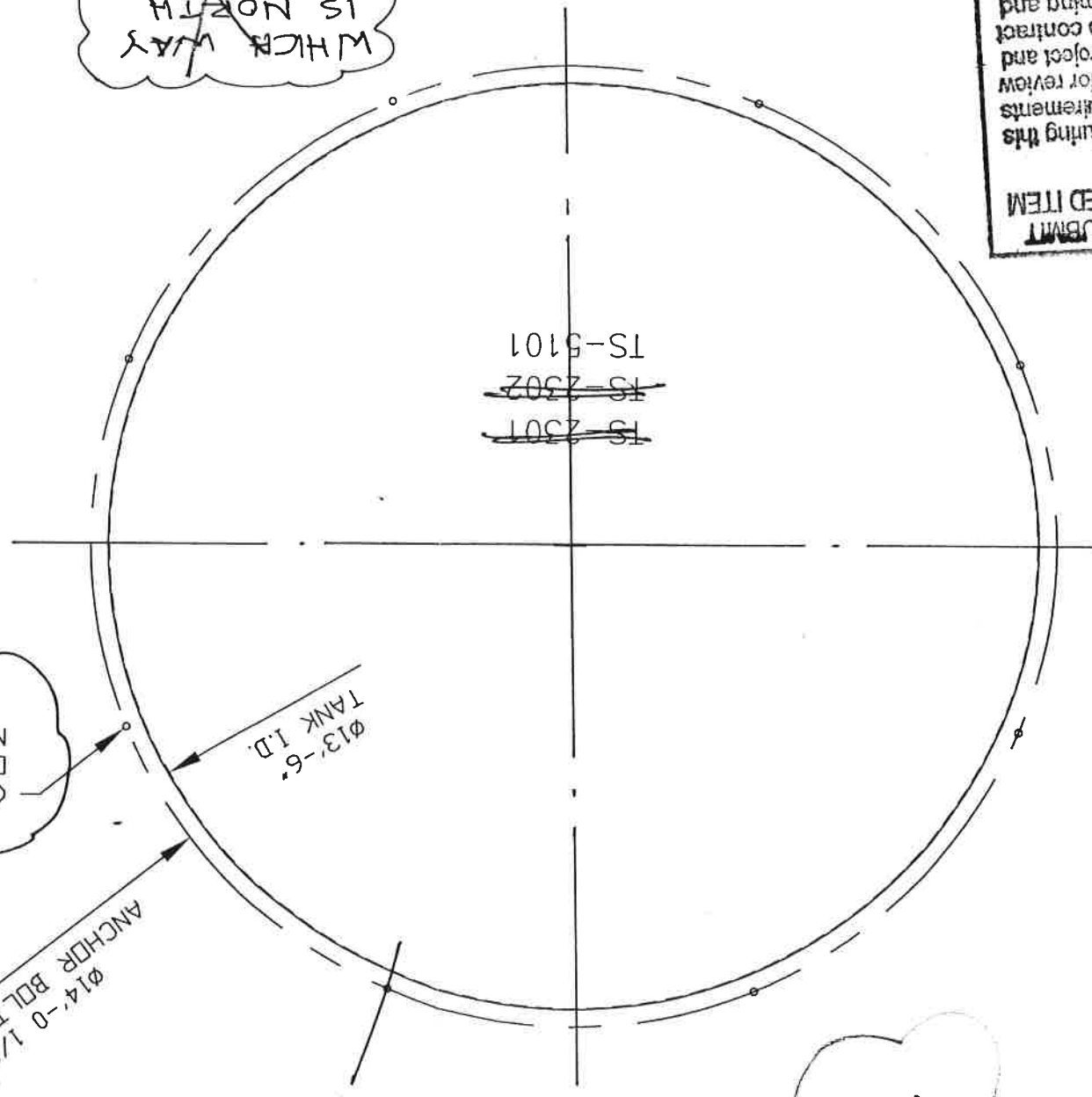
Date: 10/9/06
By: [Signature]
Lurgi PSI, INC.
MEMPHIS, TN

FURNISH AS SUBMITTED
 REVISIONS AND RESUBMIT
 SUBMIT SPECIFIED ITEM
 FURNISH AS CORRECTED

REJECTED
 SUBMIT SPECIFIED ITEM

Corrections or comments made on the shop drawings during this review do not relieve supplier from compliance with requirements of the drawings and specifications. This check is only for review of general conformance with the design concept of the project and documents. The supplier is responsible for confirming fabrication processes and techniques of construction; coordinating his work with that of all other trades; and performing his work in a safe and satisfactory manner.

WHICH WAY IS NORTH

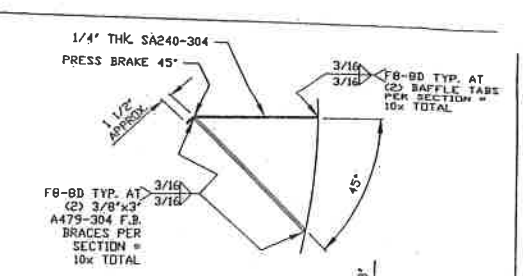
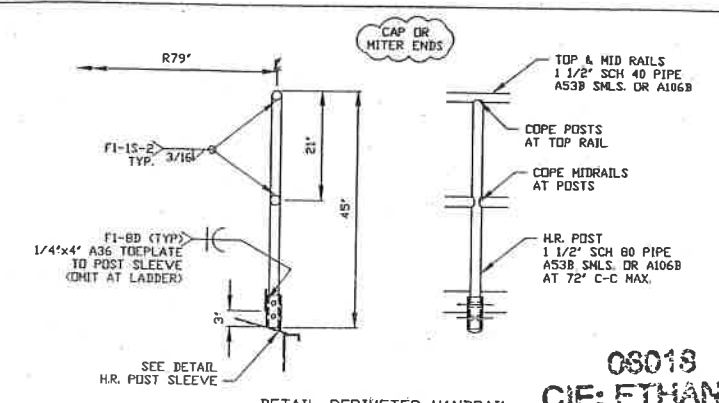
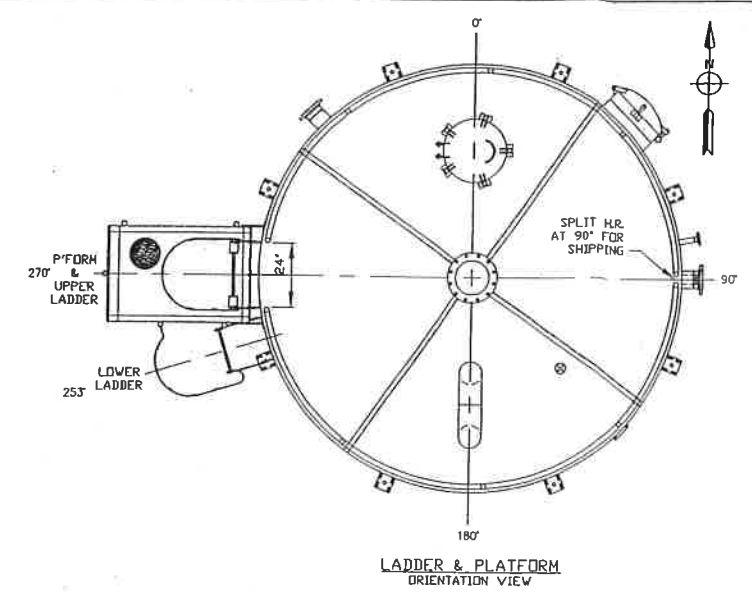
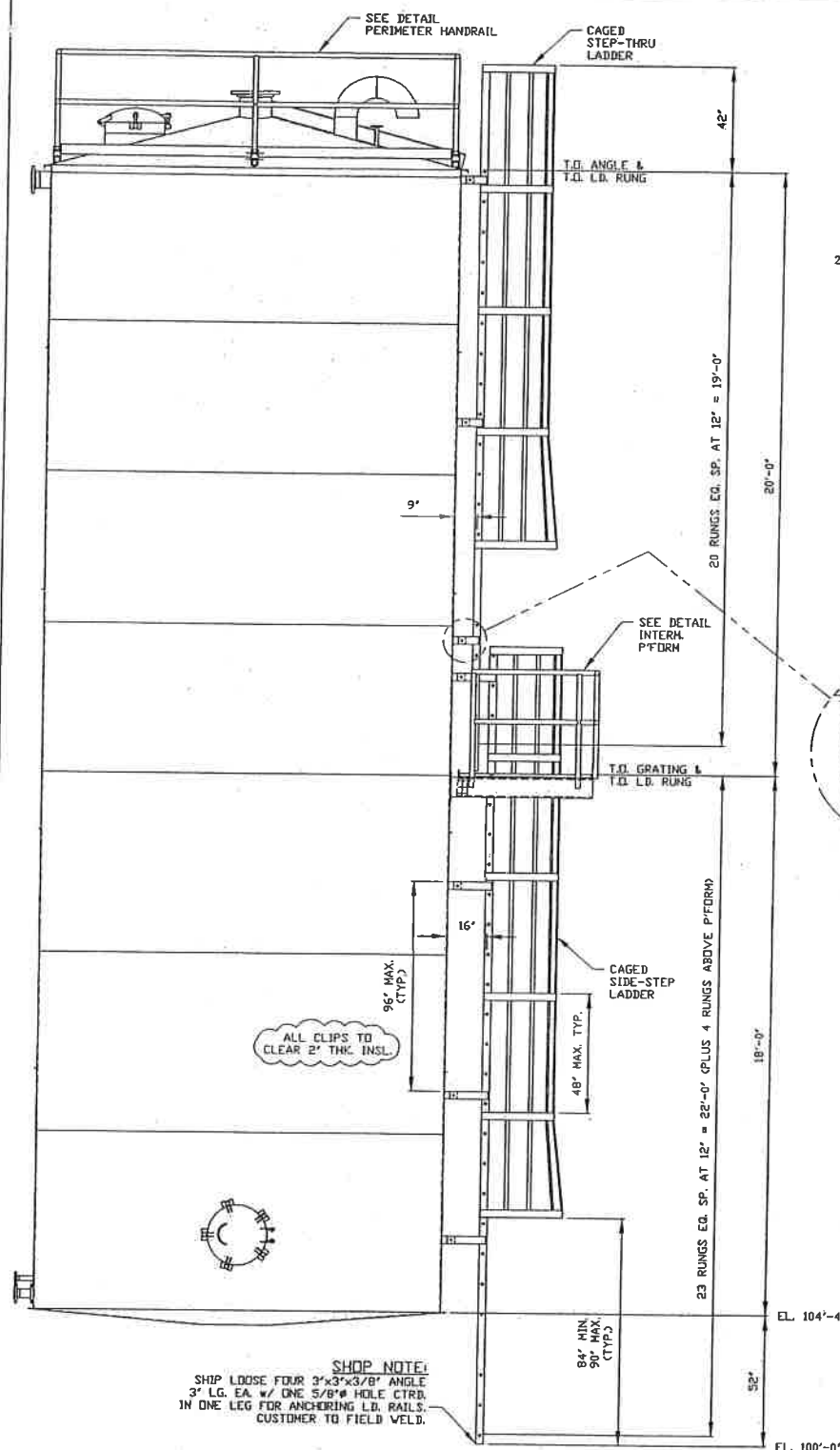


(8) 1" ANCHOR BOLTS EQ. SP. ORIENTATIONS T.B.D. PENDING. NOZZLE ORIENTATIONS.

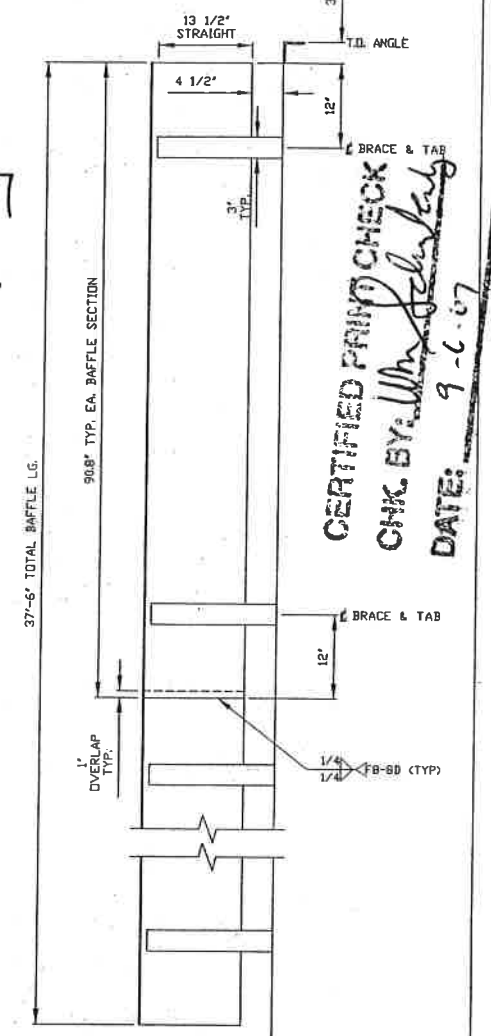
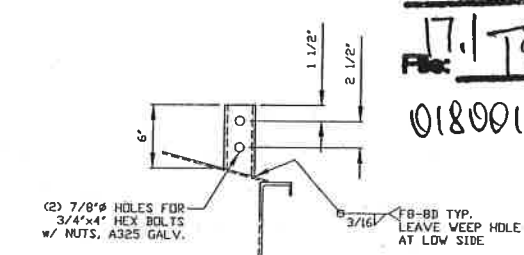
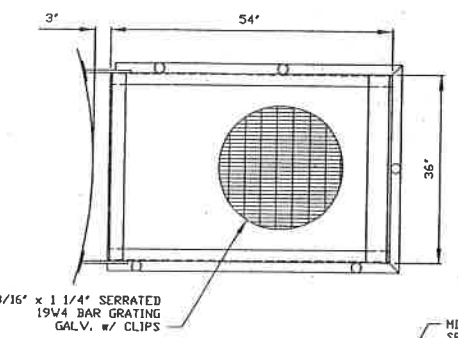
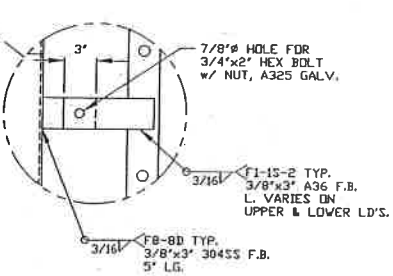
ORIENTATION READ
To Allow FDI
INSTALLATION
EASY

06018
CIE: ETHANOL
Canton, Illinois
RECEIVED OCT 05 2006
File: TS-5101
018 0012001

TS-5101



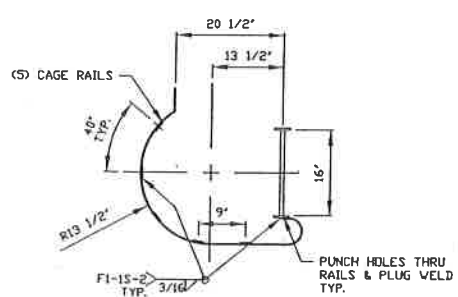
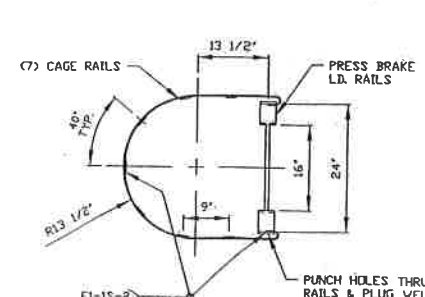
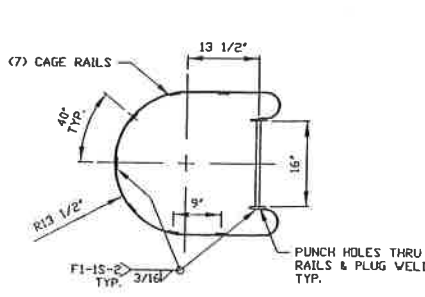
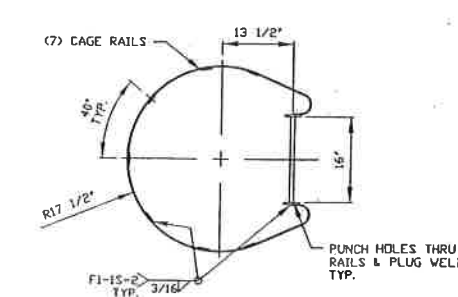
05018
CIE: ETHANOL
Canton, Illinois
09.04.07
TS 510
0180012035



CERTIFIED PRINT CHECK
CHK BY: *Wm. February*
DATE: 9-6-07

LURGI, INC.

CAGED LADDER MATERIAL
L.D. RAILS: 3/8"x3" A36 F.B.
L.D. RUNGS: 3/4" A36 ROD
CAGE HOOPS: 1/4"x3" A36 F.B.
CAGE RAILS: 1/4"x2" A36 F.B.



CERTIFIED AS BUILT DRAWING
KENNEDY TANK & MFG. CO., INC.
INDIANAPOLIS, INDIANA
BY: *JLP* DATE: 3/28/07

Licensed Structural Engineer
MARK ANTHONY WALSH
01-00533
Expire 11-30-08

KENNEDY TANK & MANUFACTURING CO., INC. 835 EAST SUMNER AVENUE INDIANAPOLIS, INDIANA 46227		DESCRIPTION: 13'-6" I.D. x 38'-0" S-S WHOLE STILLAGE TANK	
REVISIONS	NO.	DATE	BY
12/29/06	DLP		
1/27/07	DLP		
3/28/07	DLP		
FOR: LURGI PSI / CIE, INC. CANTON, IL		SCALE: 3/8 = 12	QUANTITY REQUIRED: ONE
DESIGNED BY: DLP	CHECKED BY: DLP	DATE: 11/13/06	
REV: RMS	JOB NO: 7552-09	DRAWING NO: 267552A902	
FORWARDED BY: MRC	PLAT: 3/8 = 12	P&ID NO: 6018-70287	
TAG NO: TS-5101	P&ID NO: 6018-70287	SHEET 2 OF 2	