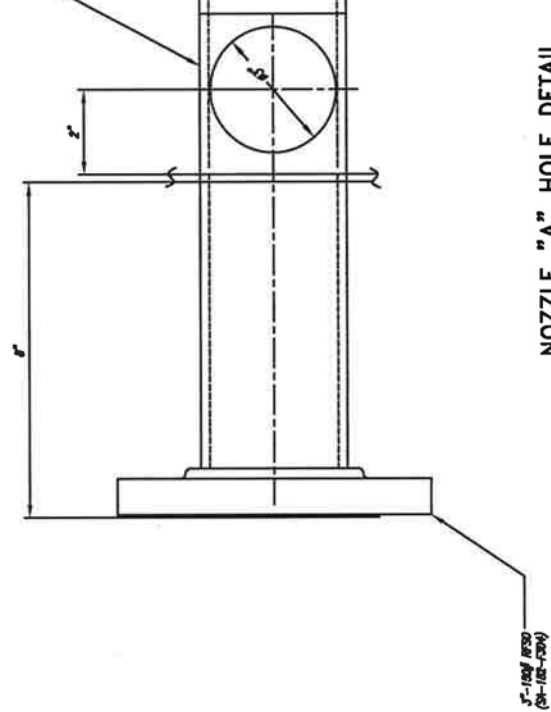
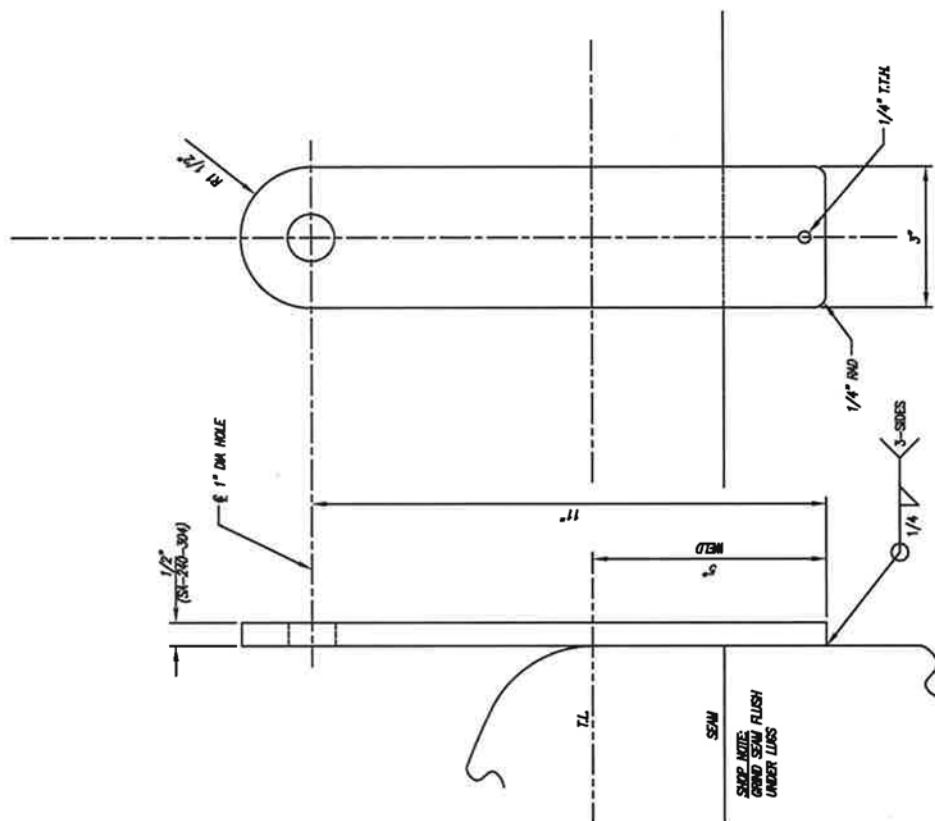


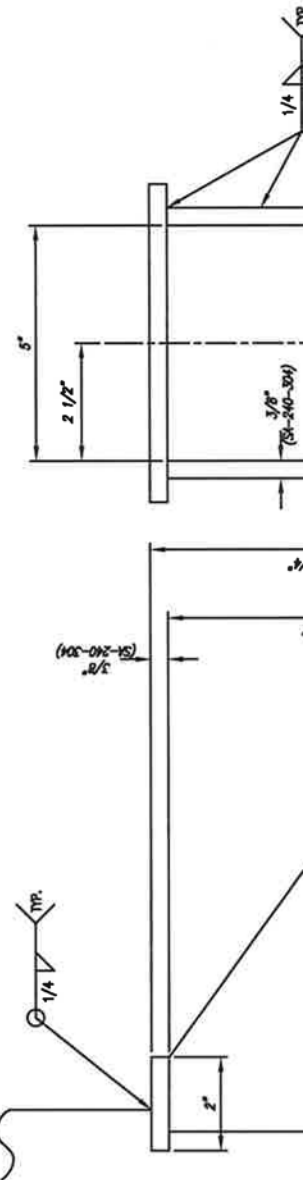
**DETAIL NOZZLE "A"**  
SEE PLAN FOR TRUE ORIENTATION



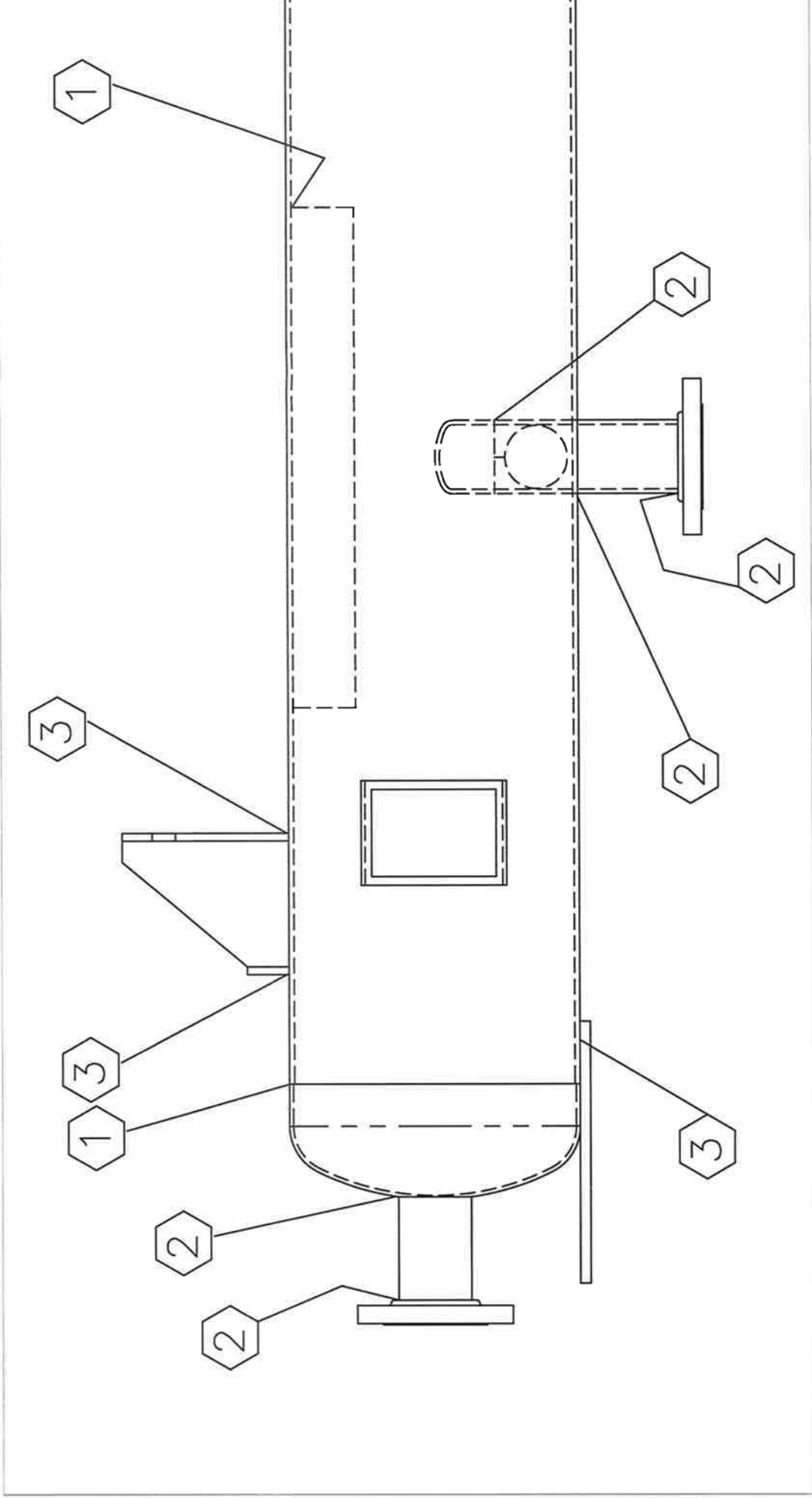
### NOZZLE "A" HOLE DETAIL



**LIFTING LUG DETAIL**  
(2-REQ'D.)



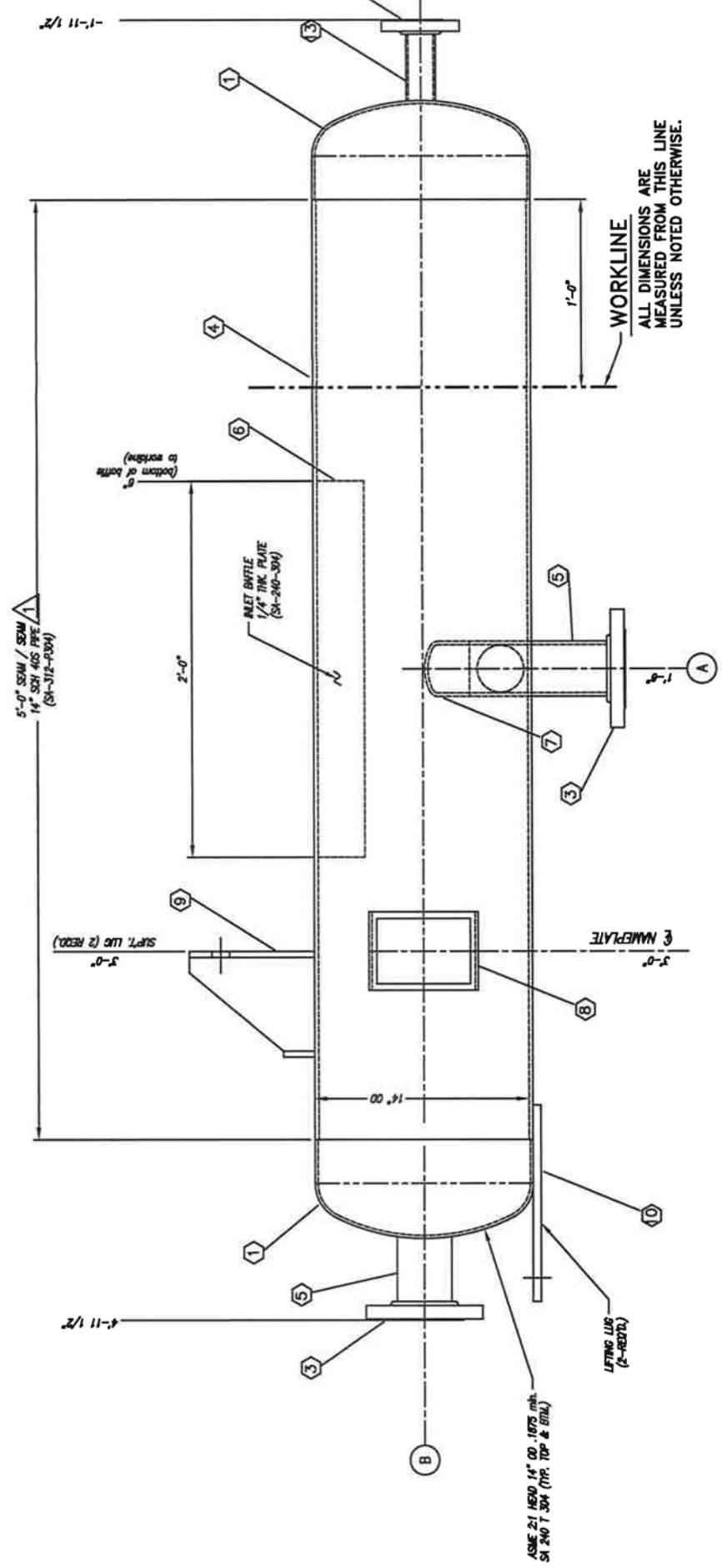
WELD PROCEDURES	① E-103	③ E-137	⑤	⑦	⑨
	② E-103; E-148	④	⑥	⑧	⑩



### BILL OF MATERIAL

Bubble #	COMMODITY	QTY.	U/M	SIZE	MAT'L	DESCRIPTION
1	HEADS	2	EA	14" OD	SA 403 T304	HEADS SCH 10S
2	FLANGE	1	EA	1 1/2"	SA 182 F304	FLANGE RFSO 150#
3	FLANGE	2	EA	3"	SA 182 F304	FLANGE RFSO 150#
4	PIPE	8	FT	14"	SA 312 T304	PIPE SCH 40S
5	PIPE	3.64	FT	3"	SA 312 T304	PIPE SCH 40S

E F G H J K



- GENERAL
- 1) FLANGE
  - 2) TOP FLANGE
  - 3) INLET
  - 4) ALL
  - 5) VESSEL
  - 6) ALL
  - 7) FINISH ON
  - 8) USE
  - 9) PT. LUG
  - 10) ALL
  - 11) NAMEPLATE

ITEM #	VS4204
PO#	61310-4500140883
SHELL THICKNESS	.188"
HEAD THICKNESS	.1875" MIN.
WT EMPTY	240
OD	14
MAX HYDRO PRESS	282

NAMEPLATE TAG DETAIL

