

ELEVATION
SEE PLAN FOR TRUE ORIENTATION

WORKLINE
ALL DIMENSIONS ARE
MEASURED FROM THIS LINE
UNLESS NOTED OTHERWISE.

EST. WEIGHTS & CAPACITY

FABRICATED WEIGHT	5851	LBS.
HYDRO WEIGHT	21179	LBS.
CAPACITY	1937	GALS.
INSULATION	959	LBS.

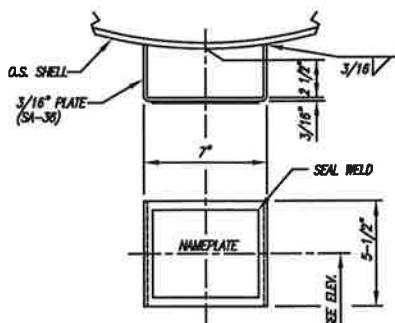
GENERAL NOTES:

- 1) FLANGE BOLT HOLES TO STRADDLE VESSEL CENTERLINES UNLESS NOTED OTHERWISE.
- 2) DRILL & TAP 1/4" TELLTALE HOLE IN REINFORCING PAD.
- 3) OUTSIDE PROJECTION SHOWN IN THE NOZZLE SCHEDULE IS FROM VESSEL O.D. UNLESS NOTED OTHERWISE.
- 4) INSIDE PROJECTION SHOWN IN THE NOZZLE SCHEDULE IS MINIMUM ONLY.
- 5) ALL NOZZLES SHALL BE ADEQUATELY PROTECTED AND COVERED FOR SHIPMENT. INSTALL 1/2" THK. PLYWOOD PROTECTORS ON FLANGES WITHOUT BLIND FLANGES. A MINIMUM OF (4) 3/8" DIA BOLTS FOR 12" AND SMALLER AND (8) 3/8" DIA BOLTS FOR LARGER FLANGES.
- 6) VESSEL TO BE DRAINED, DRIED AND CLEANED BEFORE SHIPMENT.
- 7) ALL FLANGE FACE FINISHES ARE TO BE 125-250 RIL.
- 8) PAINT OR STENCIL P.O. NUMBER & ITEM NO. WITH 6" HIGH LETTERS ON ON SIDE OF VESSEL.
- 9) ALL INTERNALS SHALL BE REMOVABLE THRU VESSEL MANWAYS.
- 10) BLINDED CONNECTIONS FURNISHED WITH BLIND FLANGE, STUDS, NUTS AND (2) GASKETS.
- 11) PT LIFTING LUGS.
- 12) ALL PRESSURE CONTAINING WELDS SHALL BE GROUND SMOOTH TO REMOVE DISCONTINUITIES SUCH AS UNDERCUTTING AND OVERLAPPING IN THE WELD GEOMETRY.
- 13) MAMP LIMITED BY SHELL.

ITEM # VS7201

PO# X
SHELL THICKNESS 3/8"
HEAD THICKNESS .317 MIN.
WT EMPTY 5851 OD 59-3/4"
MAX HYDRO PRESS 200

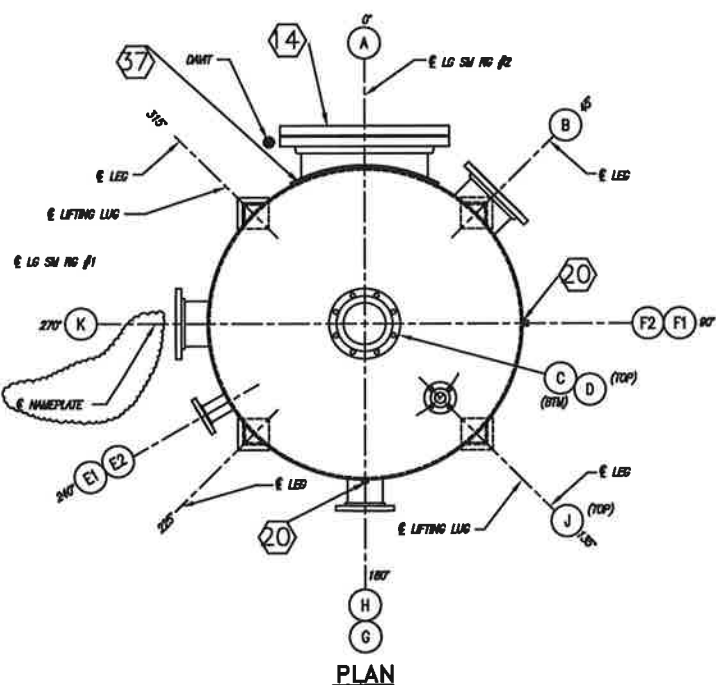
NAMEPLATE TAG DETAIL



NAMEPLATE MOUNTING BRACKET DETAIL

CERTIFIED BY SPECIALTY PROCESS FABRICATORS, INC			
SHELL MAWP	151	PSIG AT	400 °F
SHELL MAEP	18	PSIG AT	400 °F
SHELL MDMT	-5	°F AT	150 PSIG
SERIAL	XX	YEAR BUILT	2007

SpecFab SPECIALTY PROCESS FABRICATORS, INC. VICKSBURG, MS 39183



PLAN

SpecFab Job # 2007125

(8) (9)

* (20) 1 1/4" DIA x 7 1/2" LG STUDS W/ (2) 1/2" NUTS EA

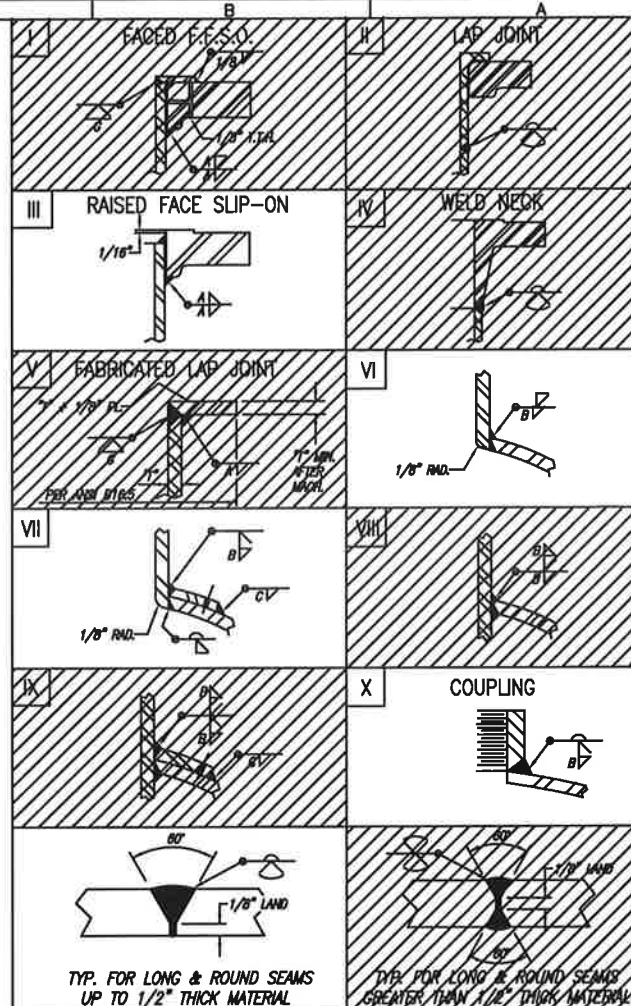
MARK NO.	SERVICE	SIZE	RATING	TYPE	FLANGE MATERIAL	WALL	LG.	NECK	MAT'L	THK. X WD.	MAT'L	O.S.	I.S.	WELD DETAIL	WELD SIZE
1	STEAM COND.	8"	150#	RFSO	SA-105	S/40	---	---	SA-105-B	1/4" X 2"	SA-516-70	6"	FLUSH	W	5/16 1/4 3/16
1	PT	3/4"	3000#	HALF CPLG.	SA-105	---	---	---	---	---	---	---	FLUSH	X	---
1	PSV	2"	150#	RFSO	SA-105	S/80	---	---	SA-105-B	---	---	---	FLUSH	W	3/16 1/4 3/16
G	STEAM COND. INLET	8"	150#	RFSO	SA-105	S/80	---	---	SA-105-B	1/4" X 2"	SA-516-70	6"	FLUSH	W	1/4 1/4 3/16
F1/F2	LEVEL CHARGE	3/4"	3000#	HALF CPLG.	SA-105	---	---	---	---	---	---	---	FLUSH	X	---
E1/E2	LEVEL TRANS.	3"	150#	RFSO	SA-105	S/80	---	---	SA-105-B	1/4" X 2"	SA-516-70	6"	FLUSH	W	1/4 1/4 3/16
D	VENT	8"	150#	RFSO	SA-105	S/40	---	---	SA-105-B	1/4" X 2"	SA-516-70	6"	FLUSH	W	1/4 1/4 3/16
C	STEAM COND. OUTLET	8"	150#	RFSO	SA-105	S/80	---	---	SA-105-B	1/4" X 2"	SA-516-70	6"	FLUSH	W	1/4 1/4 3/16
B	STEAM COND. INLET	10"	150#	RFSO	SA-105	S/40	---	---	SA-105-B	1/4" X 2"	SA-516-70	6"	FLUSH	W	3/8 1/4 3/16
A	MANWAY	24"	150#	RFSO	SA-105	S/20	---	---	SA-105-B	3/8" X 6"	SA-516-70	6"	FLUSH	W	3/8 3/8 5/16

W/ BLD. GASK. BOLTING & GINT *

NOTES

REFERENCE DRAWINGS		REVISIONS			
NUMBER	DESCRIPTION	NO.	DESCRIPTION	BY	CHK. DATE
		A	ISSUED FOR APPROVAL	JSL	JSL
		O	ISSUED FOR CONSTRUCTION	BGD	DM 4/24/07

NOTICE
THIS DRAWING IS THE PROPERTY OF ERCON, INC. OR ONE OF ITS AFFILIATED COMPANIES ("ERCON"). NO COPIES OF OR REPRODUCTION OF THIS DRAWING SHALL BE MADE, IN WHOLE OR IN PART, NOR INFORMATION THEREON PUBLISHED OR USED OTHER THAN AS SPECIFICALLY AUTHORIZED BY ERCON IN WRITING. ALL COPIES ARE TO BE RETURNED ON REQUEST OF ERCON.



TYP. FOR LONG & ROUND SEAMS
UP TO 1/2" THICK MATERIAL

TYP. FOR LONG & ROUND SEAMS
GREATER THAN 1/2" THICK MATERIAL

WELD PROCEDURES XXX

SPECIFICATIONS

CONSTRUCTION CODE	ASME CODE SECTION VIII, DIV. 1 2004 EDITION, 2006 ADDENDA
YEAR BUILT	2007
SERIAL NO.	XX
DESIGN PRESSURE INTERNAL	150
DESIGN PRESSURE EXTERNAL	FV
DESIGN MDMT	-5 °F
HYDRO PRESSURE INTERNAL	200 PSIG
CORROSION ALLOWANCE	.080 IN
RADIOGRAPHY	NONE
SHELL MATL. SPEC.	SA-516-70
FLANGE MATL. SPEC.	SA-105
PIPE MATL. SPEC.	SA-105-B
REPAD MATL. SPEC.	SA-516-70
NATIONAL BD. NO.	LATER
PSIG @ TEMP.	-5/400 °F MIN/MAX
PSIG @ TEMP.	-5/400 °F MIN/MAX
J.E. SHELL	708
J.E. HEADS	85X (smth)
STRESS RELIEVE	NONE
HEAD MATL. SPEC.	SA-516-70
CPLG. MATL. SPEC.	SA-105
BW FIT. MATL. SPEC.	---
STRUC. MATL. SPEC.	SA-36
FLG. STUD SPEC.	SA-183-87
FLG. NUT SPEC.	SA-184-2H

GASKET DESC. ANSI B16.5, GASKLOCK 3000, PTFE OR EQUAL, OR EXPM

INSULATION DESC. 3" THK

INSPECTION BY HSB CO. & CUSTOMER

SANDBLAST SP6 (COMMERCIAL BLAST)

PAINT AMERON DIMECOTE 9 (3-5 MILS)

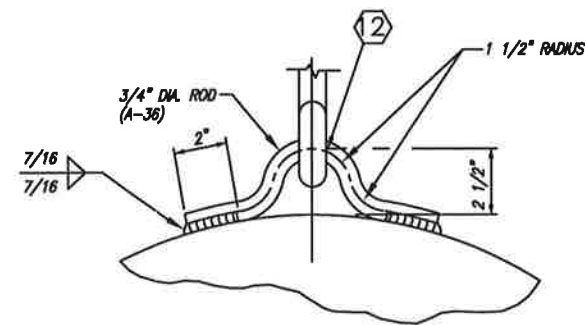


Specialty Process Fabricators, Inc.
2353 Haining Road
Vicksburg, Ms 39183
601-636-6888
www.specprofab.com

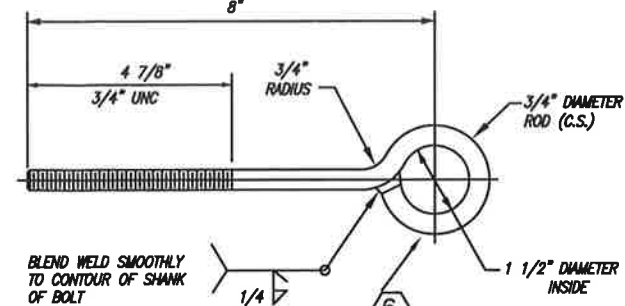
DESCRIPTION : 59" I.D. x 11'-8" SEAM / SEAM
STEAM CONDENSATE FLASH RECIEVER
ITEM NO.: VS 7201
GENERAL LAYOUT

CUSTOMER: BUNGE-ERCON
VICKSBURG, MS.

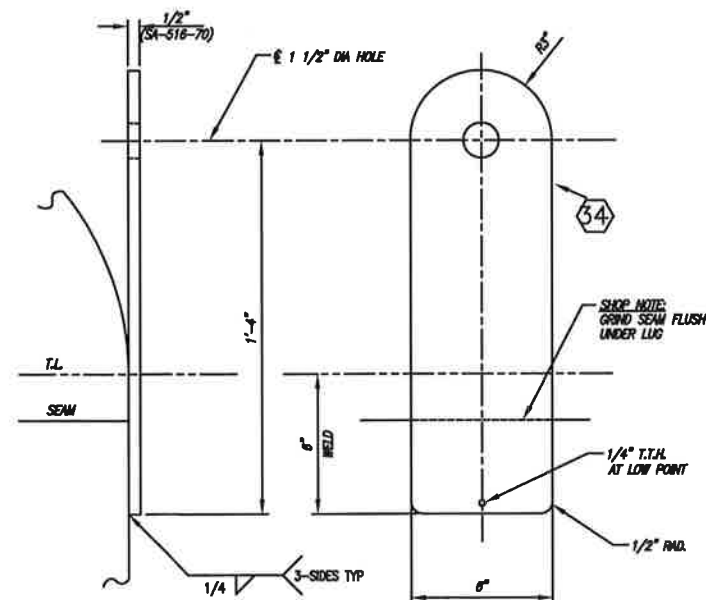
SCALE : N.T.S.	DATE 3/27/07	P.O. No. :
DRAWN BY JSL	FILE No. :	
CHECK BY JSL	DWG. NO. V-074-125	SHEET NO. 1 OF 3
APVD :		REV. 0



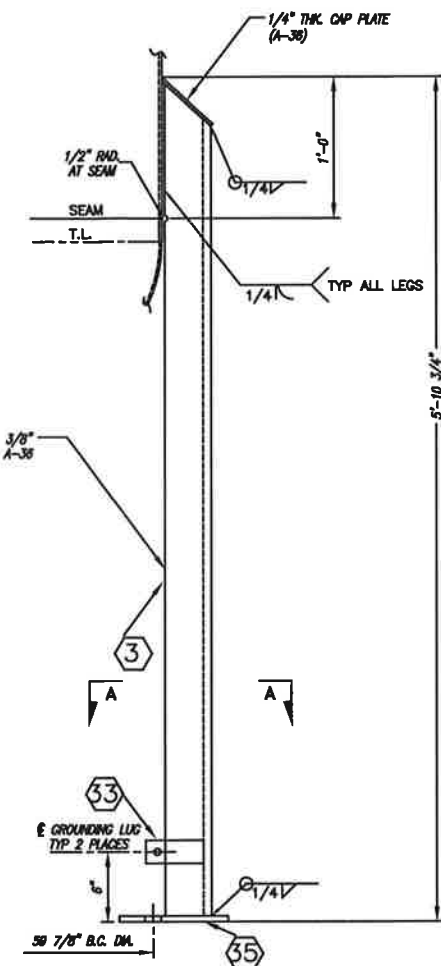
(1-REQ'D.)



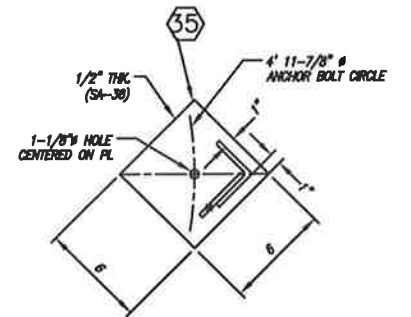
(1-REQ'D.)



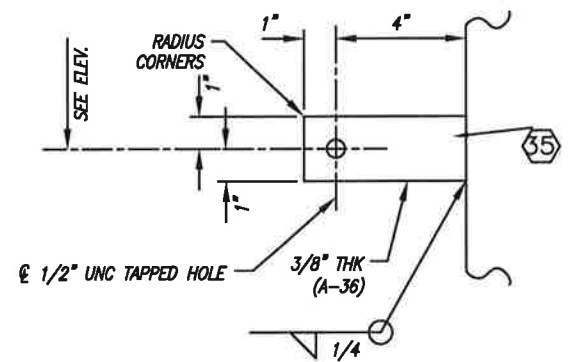
(2-REQ'D.)



TYPICAL (4) PLACES



SECTION A-A




(2-REQ'D.)



(1-REQ'D.)

SpecFab Job # 2007125

REFERENCE DRAWINGS		REVISIONS			
NUMBER	DESCRIPTION	NO.	DESCRIPTION	BY	CHK. DATE
		A	ISSUED FOR APPROVAL	JSL	
		D	ISSUED FOR CONSTRUCTION	BGD	4/17/0
NOTICE					
THIS DRAWING IS THE PROPERTY OF ERGON, INC. OR ONE OF ITS AFFILIATED COMPANIES ("ERGON"). NO COPIES OF OR REPRODUCTION OF THIS DRAWING SHALL BE MADE, IN WHOLE OR IN PART, NOR INFORMATION THEREON PUBLISHED OR USED OTHER THAN AS SPECIFICALLY AUTHORIZED BY ERGON. IN WRITING, ALL COPIES ARE TO BE RETURNED ON REQUEST OF ERGON.					

S/O: 2007125	ITEM: VS7201	ONE	REQ'D.
		Specialty Process Fabricators, Inc. 2353 Haining Road Vicksburg, Ms 39183 601-636-6888 www.specprofab.com	
DESCRIPTION : 59" I.D. x 11'-8" SEAM / SEAM STEAM CONDENSATE FLASH RECIEVER ITEM: VS7201 MISC. DETAILS			
CUSTOMER: BUNGE-ERGON VICKSBURG VICKSBURG, MS.			
SCALE : NONE	DATE	P.O. No. :	
DRAWN : JAL	2/22/07	FILE No. :	
CHECK : JAL	3/1/07	DWG. NO.	
APVD :		V-074-125	
		SHEET NO.	REV.
		2 OF 3	0

WELD
PROCEDURES

① E-141, E-142

③

⑤

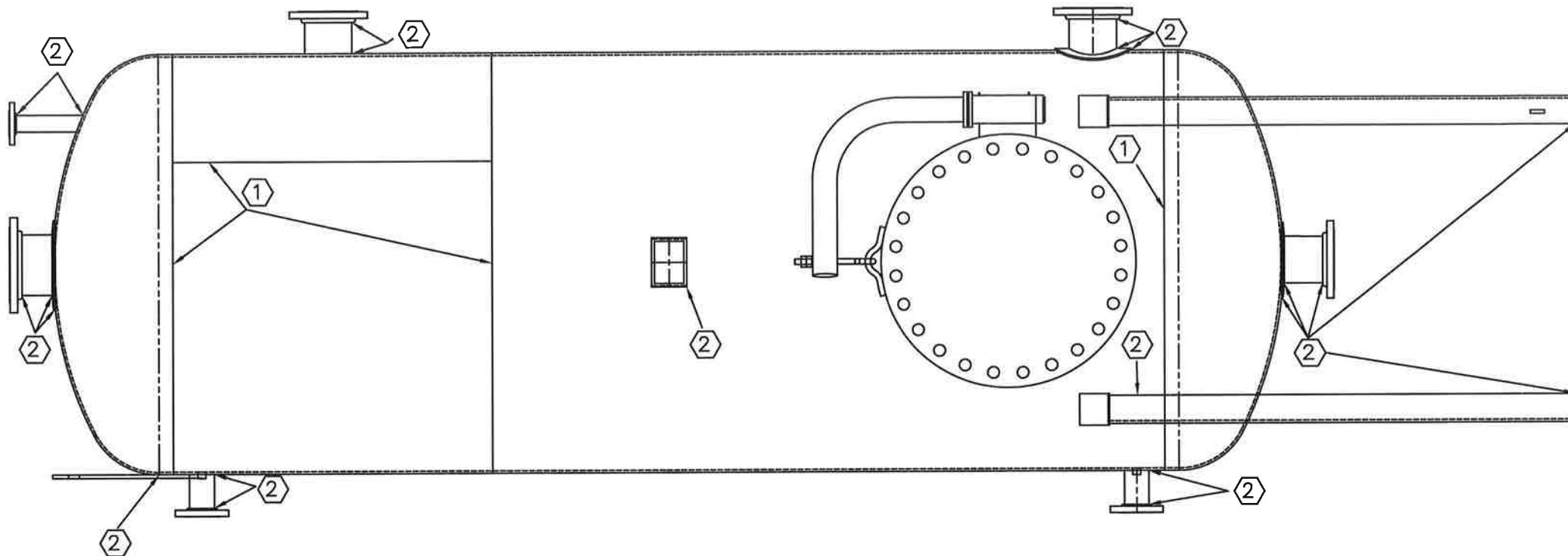
⑦

② E-142, E-139, E109, E130

④

⑥

⑧



BILL OF MATERIALS

Bubble #	COMMODITY	QTY.	U/M	SIZE	MAT'L	DESCRIPTION
1	HEADS	2	EA	59" ID X .317 MIN THK	SA-516-70	HEADS
2	PLATE	1	EA	96" X 480" X 3/8"	SA-516-70	PLATE
3	ANGLE	40	FT	4 X 4 X 3/8"	A36	ANGLE
4	DAVIT ARM	1	EA	2"	A 105 GRB	DAVIT ARM SCH 80
5	PIPE	1	FT	2 1/2"	A 105 GRB	PIPE SCH 40
6	EYEBOLT	1	EA	3/4" DIA	CS	EYEBOLT 1 1/2" DIA EYE
7	HEAVY HEX NUTS	2	EA	3/4" UNF	CS	HEAVY HEX NUTS
8	STUD	20	EA			STUDS
9	NUTS	40	EA			NUTS
10	WASHER	1	EA	3/4"	CS	WASHER FLAT
11	GASKET	3	EA	24"		GASKET 3000 1/8" THK
12	ROD	3	FT	3/4"	A36	ROD
13	FLANGE	1	EA	24"	A105	FLANGE RFSD 150#
14	BLIND FLANGE	1	EA	24"	A105	BLIND FLANGE RF 150#
15	FLANGE	1	EA	10"	A105	FLANGE RFSD 150#
16	FLANGE	2	EA	6"	A105	FLANGE RFSD 150#
17	FLANGE	2	EA	6"	A105	FLANGE RFSD 150#
18	FLANGE	2	EA	3"	A105	FLANGE RFSD 150#
19	FLANGE	1	EA	2"	A105	FLANGE RFSD 150#
20	HALF COUPLING	3	EA	3/4"	A105	HALF COUPLING 3000#
21	PIPE	1	FT	24"	A105 GRB	PIPE SCH 20
22	PIPE	1	FT	10"	A105 GRB	PIPE SCH 40
23	PIPE	2	FT	6"	A105 GRB	PIPE SCH 40
24	PIPE	2	FT	6"	A105 GRB	PIPE SCH 80
25	PIPE	2	FT	3"	A105 GRB	PIPE SCH 80
26	PIPE	1	FT	2"	A105 GRB	PIPE SCH 80
27	NAMEPLATE BRACKET	1	EA	3/16" THK	A36	NAMEPLATE BRACKET
28	HYDRO	1	EA	10"		GARLOCK 3000 150# 1/8" THK
29	HYDRO	2	EA	6"		GARLOCK 3000 150# 1/8" THK
30	HYDRO	2	EA	6"		GARLOCK 3000 150# 1/8" THK
31	HYDRO	2	EA	3"		GARLOCK 3000 150# 1/8" THK
32	HYDRO	1	EA	2"		GARLOCK 3000 150# 1/8" THK
33	GROUNDING LUG	2	EA	3/8" X 2" X 5"	A36	PLATE
34	LIFTING LUG	2	EA	1/2" X 6" X 19"	SA-516-70	PLATE
35	PLATE	1	EA	1/2" X 14" X 14"	SA-516-70	PLATE
36	REPAD	1	EA	1/4" X 24" X 40"	A36	PLATE
37	REPAD	1	EA	3/8" X 36" X 36"	SA-516-70	PLATE

NOTES:

- SYMBOL ① IS TYPICAL FOR ALL Long Seams & Girth Welds
- SYMBOL ② IS TYPICAL FOR ALL Other Welds Shown
- SYMBOL (X) IS TYPICAL FOR ALL
- SYMBOL (X) IS TYPICAL FOR ALL
- SYMBOL (X) IS TYPICAL FOR ALL
- SYMBOL (X) IS TYPICAL FOR ALL

SpecFab Job # 2007125

REFERENCE DRAWINGS		REVISIONS			
NUMBER	DESCRIPTION	NO.	DESCRIPTION	BY	CHK
		0	ISSUED FOR CONSTRUCTION	BCD	4/17/07
NOTICE					
THIS DRAWING IS THE PROPERTY OF ERGON, INC. OR ONE OF ITS AFFILIATED COMPANIES ("ERGON"). NO COPIES OF OR REPRODUCTION OF THIS DRAWING SHALL BE MADE, IN WHOLE OR IN PART, NOR INFORMATION THEREON PUBLISHED OR USED OTHER THAN AS SPECIFICALLY AUTHORIZED BY ERGON IN WRITING. ALL COPIES ARE TO BE RETURNED ON REQUEST OF ERGON.					

FOR CUSTOMER USE

ORIGINATION: Brian Dykes

DATE: 4/17/07


REV: 0

S/O NUMBER: 2007125

CUSTOMER: BUNGE-ERGON VICKSBURG

PO NUMBER:

ITEM NUMBER: VS-7201

S/O: 2007125	ITEM: VS-7201	ONE	REV'D.
			
Specialty Process Fabricators, Inc. 2353 Haining Road Vicksburg, Ms 39183 601-636-6888 www.specprofab.com			
DESCRIPTION : 59" OD x 11'-8" SEAM / SEAM STEAM CONDENSATE FLASH RECEIVER ITEM NO.: VS-7201 WELDMAP			
CUSTOMER: BUNGE-ERGON VICKSBURG VICKSBURG, MISSISSIPPI			
SCALE : N.T.S.	DATE : 4/17/07	P.O. No. :	
DRAWN : BCD	CHECK : BCD	DWG. NO. : V-074-125	SHEET NO. : 3 OF 3
APVD :			REV. : 0