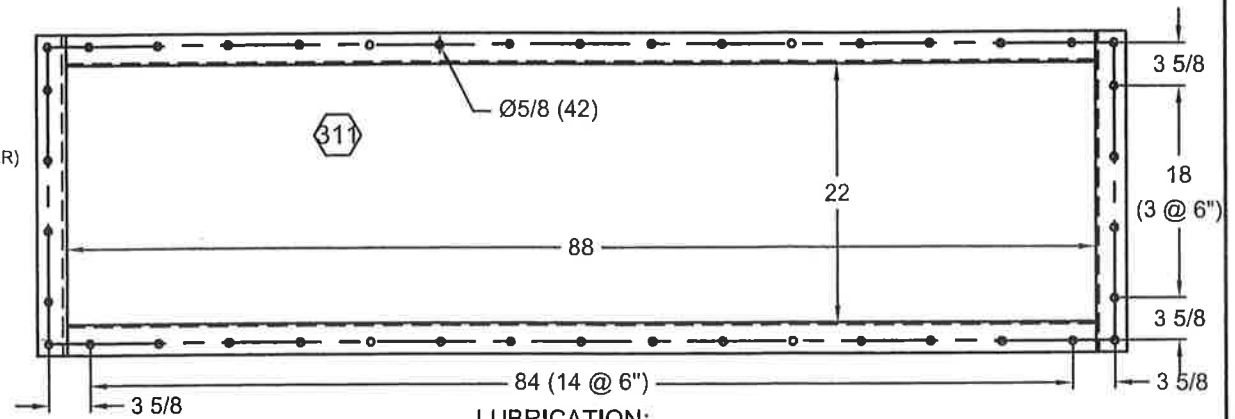


BARR-ROSIN DRAWING NUMBER
24091 - SCRU - 32 - 01 REV A

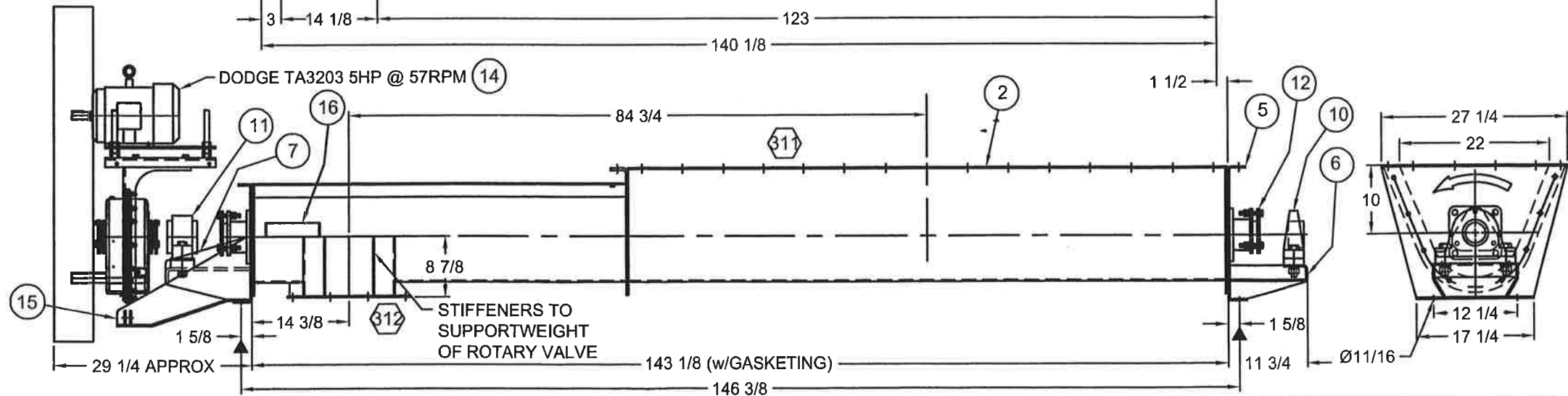
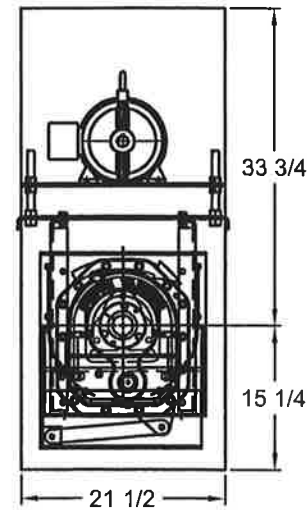
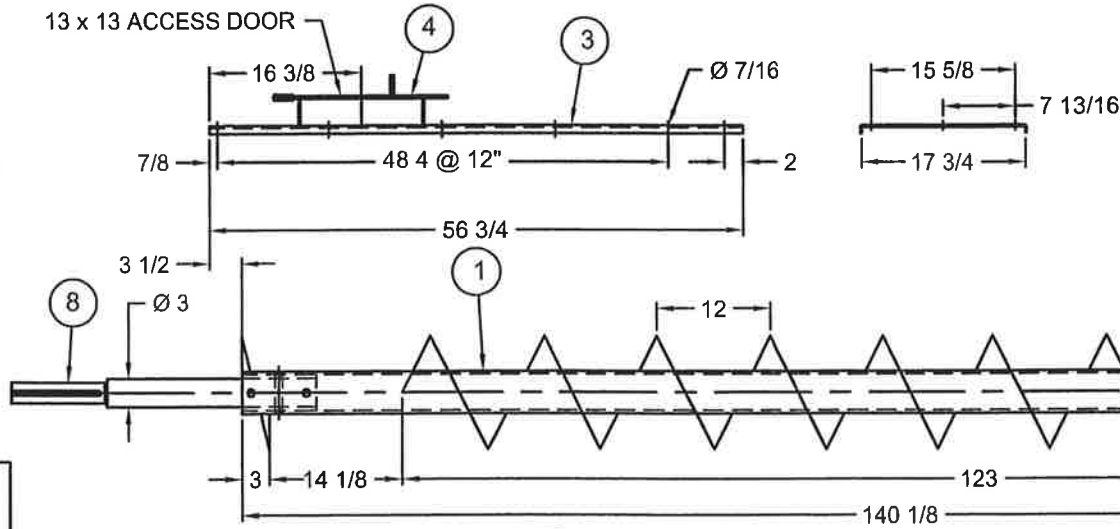
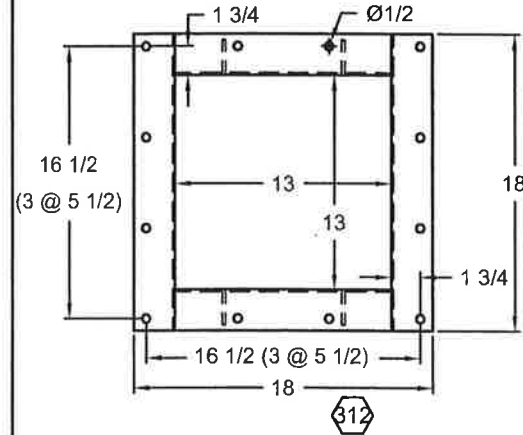
ITEM	QTY	PART NO.	DESCRIPTION	MATL	WT.
1	1	12SS616-RH	12" DIA x 11' 8 1/8" LG SCREW	CS	300.0
2	1	148-0001-A	TROUGH ASSEMBLY	CS	441.0
3	1	CTC1210-F	12" FORMED COVER x 56 3/4 LG w/ GASKETING	CS	43.0
4	1	148-0001-B	ACCESS DOOR	CS	23.7
5	1	148-0001-D	12" FLARED END PLATE	CS	39.0
6	1	206-0424-B	PEDESTAL ASSEMBLY	CS	24.0
7	1	206-0464	DRIVE END PEDESTAL ASSEMBLY	CS	85.8
8	1	CDS3-3B	3", 3-BOLT DRIVE SHAFT x 32 7/8 LG	CS	57.0
9	1	CES3-3B	3", 3-BOLT END SHAFT x 21" LG	CS	42.1
10	1	P2B-SCM3	3" DODGE "SCM" PEDESTAL BALL BRG		21.0
11	1	P2B-E-300	3" DODGE "E" PEDESTAL ROLLER BRG		27.0
12	2	FGS3	3" FLANGE GLAND SEAL	CS	38.0
13	6	HDWE	3/4 x 8 COUPLING BOLT w LKWSHR & NUT	GRD 5	3.0
14	1		DRIVE ASSEMBLY		387.0
15	1	214-0087	TORQUE ARM ASSEMBLY	CS	36.4
16	1	148-0001-E	TAG BRACKET	CS	1.5
TOTAL					1569.5

Drive Components
 - TA3203H25 REDUCER
 - TA3203TB x 2 3/16 BUSHING KIT
 - TA3203 MM MOTOR MOUNT
 - TA3203 ROD ASSEMBLY
 - TA3203 BG BELT GUARD
 - 5HP MOTOR 1800RPM (BY CUSTOMER)
 - 2/3V3.35-SH SHEAVE
 - SH X 1 1/8-KW BUSHING
 - 2/3V4.12-SH SHEAVE
 - SH X 1 3/8-KW BUSHING
 - BANDO 3VX630 V-BELT
 - 25.6 Center Distance



LUBRICATION:
 BEARINGS: USE MOBILITH AW2 GREASE EVERY 10 WEEKS
 REDUCER: FOR OIL GRADE SEE CHART
 FILL TO PLUG OR 1.4 LITERS, CHANGE EVERY 6 MONTHS OR 2500 HOURS OF OPERATION.

NOTE:
 1. PAINT EXTERNAL SURFACES TO P4 FINISH (SAFETY BLUE)
 PRIMER - ICI DEVOE DEVRAN 224HS 5-6 MILS THK
 PAINT - ICI DEVOE TRUE GLAZE 4508 3 MILS THK
 2. CLEAN/COAT INTERNAL SURFACES w/ MINERAL OIL
 3. STENCIL PAINT FLANGE NUMBER'S



▲ = SUPPORT POINTS

REV.	DATE	BY	REMARKS
01	10-17-06	TMP	CHANGED PER CUSTOMER

Tolerances:
 Unless otherwise specified
 Fractions: ±1/32
 Angular: ±1°
 X.XX: ±0.01
 X.XXX: ±0.005

Drawn by: TMP
 Date: 8-23-06
 Work Order No: W49419
 Reference:



Customer: BARR-ROSIN
 2409-SCRU/32-TR
 Description:
 12" DIA x 11' 11-1/8" LG BAG HOUSE DISCHARGE SCREW CONVEYOR

DO NOT SCALE **D**
 Drawing Number
 148-0001-R1

BARR-ROSIN
 RECEIVED
 MAY 28 2007